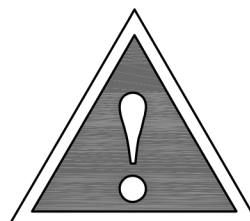
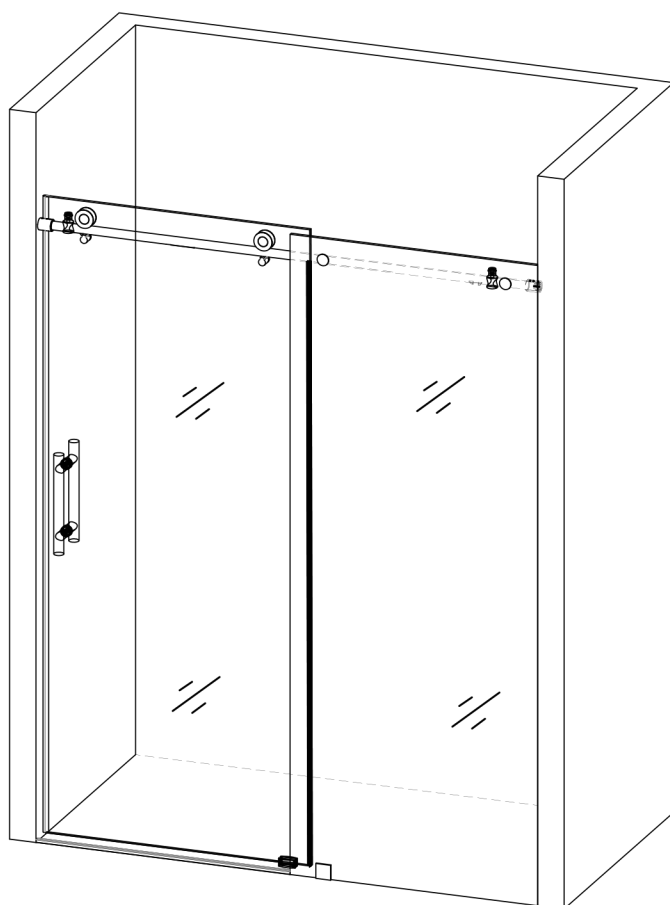


SHOWER ENCLOSURE HANGING WHEEL SLIDING DOOR INSTALLATION INSTRUCTIONS

**Model:SSD6076 Soft Close
SSD4876 Soft Close**

**Maintenance tip:**

The following substances or articles may cause physical harm and/or damage the shower door.

Do not use them for cleaning:

Acid and alkaline solvents, chemicals such as hydrochloric acid, acetone thinner, solvents, cleansers, or polishers, nylon brooms or sandpaper.

Our product may have changes without prior notice

Important Note

Attention:

The Glass Shower doors include Explosion-Proof film on the reverse side of the certification printed logo.

See the Fig1 & Fig2

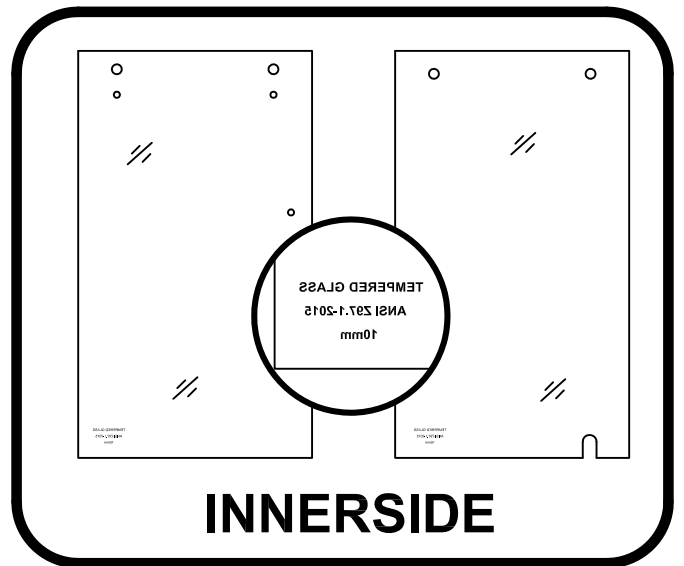


Fig 1

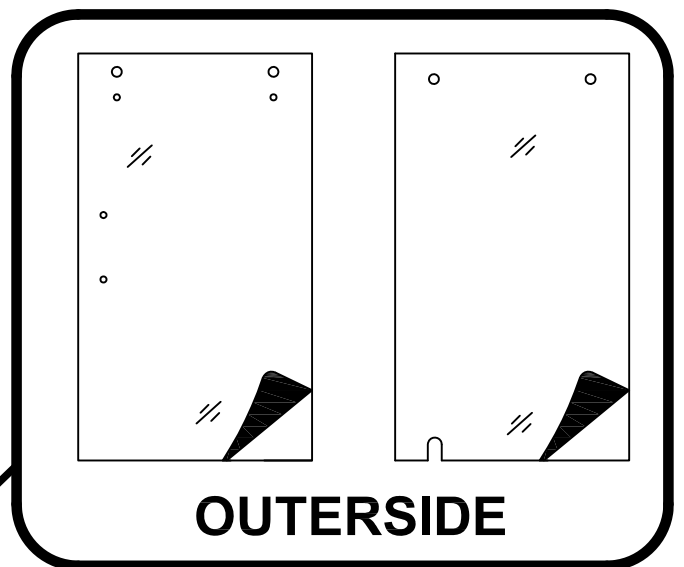
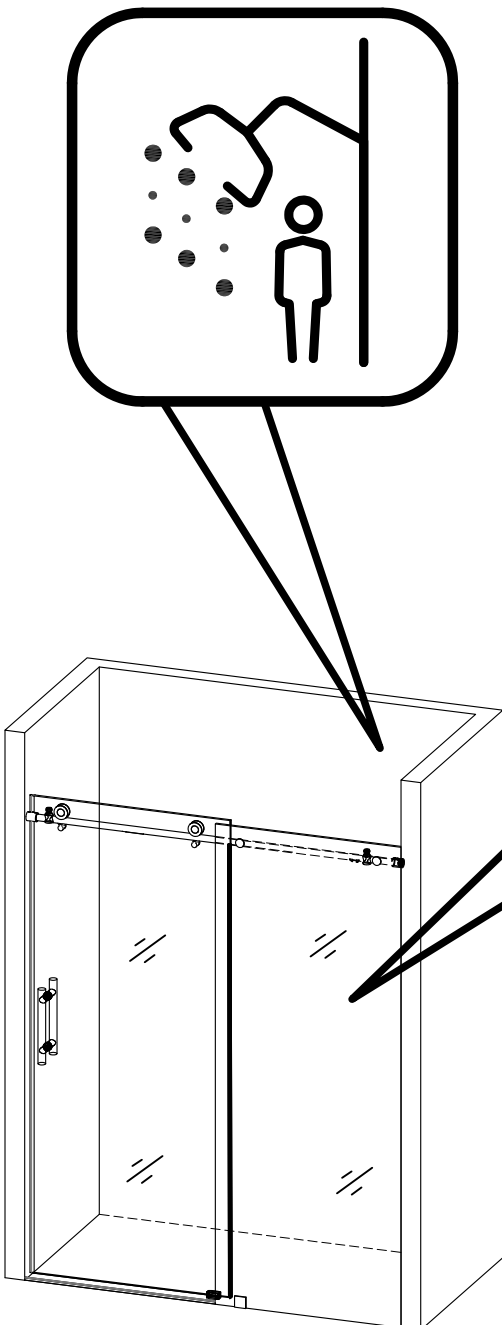
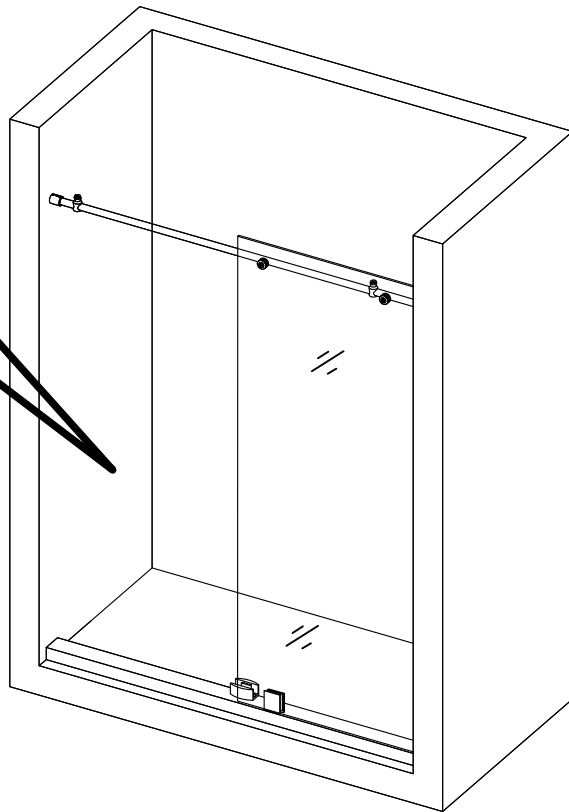
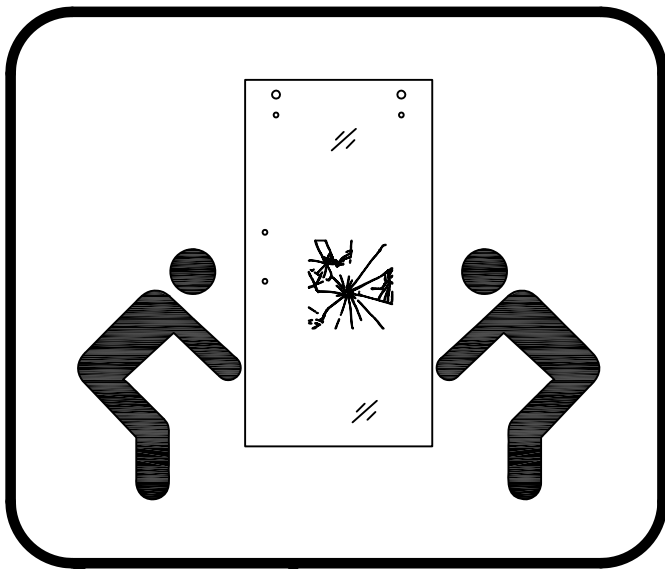


Fig 2

Explosion-Proof film helps to hold glass in place in the event of breakage. So as to prevent the glass shatter will hurt the user. Allowing the panel to be carefully removed by a professional at a later date.





In the event of breakage please follow the steps below.

- 1. If someone is inside the shower, move the panel slowly out of the way and exit the bathroom as soon as possible. Do not allow anyone to re-enter bathroom until prepared to remove and dispose of broken panel.**
- 2. Utilize safety precautions such as a hard-hat, safety glasses, leather gloves, proper footwear and moving blankets to minimize risk of injury.**
- 3. It is recommended that two people assist in the removal of the panel. One person to hold panel steady, and the other to un-install the hardware. Then carefully remove glass from shower and lay flat on cardboard or plywood until it can be removed. Once laying flat, a razor knife or box cutter can be utilized to cut the film and remove in smaller pieces.**

PREPARATION

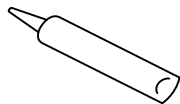
1. WE STRONGLY RECOMMEND THAT A LICENSED AND INSURED PROFESSIONAL CONTRACTOR TO INSTALL THIS PRODUCT INCLUDING THE ASSISTANCE OF A SECOND PERSON DURING INSTALLATION.
2. After opening all boxes and packages, read this introduction carefully. Check that all of the needed parts are included in the package by marking all the components on the "Detailed Diagram of Shower Door Components". Examine boxes and packages for shipping damage. If the unit has been damaged, has a finishing defect, or is missing parts, please contact our customer support department to be served immediately. Please note that We will not replace any damaged products or missing parts free of charge after 5 business days or if the product has been installed. Feel free to contact your local distributor if you have any questions.
VERY IMPORTANT: Please double check the glass corner and four edges of the glass door and fixed panel to make sure that all the glass are in perfect condition and without any breakage. Please do not try to install the shower door, if there is breakage to the glass corner.
3. Please note that you should consult your local building codes with questions on installation compliance standards. Building and plumbing codes may vary by location, and We are not responsible for code compliance standards for your project and will not accept any returns.
4. Prior to installation, ensure that the installation surface is leveled and solid and will be able to support the total weight of the unit. Also, make sure the walls are at the right angles. Irregular installation surface level or improper angle of side walls will result in serious problems during installation. Please, note that some adjustments and drilling might be necessary during the installation process.
5. **NOTE!** This door does not have out-of-plumb adjustment. Make sure your walls are at right angles.
6. This door requires a minimum 2 3/4" wide threshold, base or installation space. Please note that Step 6 calls for installation of the door to the wall using anchors. However, the manufacturer strongly recommends installing these heavy doors to the studs or to preinstalled 2" x 4" wood reinforcements behind the wall and attach the Wall brackets to it.

ATTENTION: THIS DOOR IS EXTREMELY HEAVY AND REQUIRES PROFESSIONAL INSTALLATION. INSTRUCTIONS ARE GIVEN FOR THE SHOWER DOOR INSTALLATION. PLEASE, FOLLOW THE SAME INSTRUCTIONS TO INSTALL THE GLASS DOOR. INSTRUCTIONS THAT, IF IGNORED, COULD RESULT IN DEATH OR SERIOUS PERSONAL INJURY CAUSED BY INCORRECT HANDLING OR INSTALLATION OF THE PRODUCT. THESE INSTRUCTIONS MUST BE OBSERVED FOR SAFE INSTALLATION.

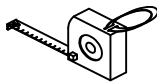
TOOLS REQUIRED



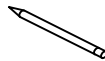
Soft Cloth
or Blanket



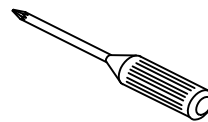
Caulk



Tape
Measure



Pencil



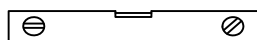
Phillips
Screwdriver



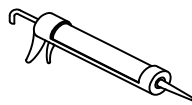
Drill Bit
=ø8



Safety Glass



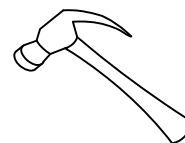
Level



Caulk Gun

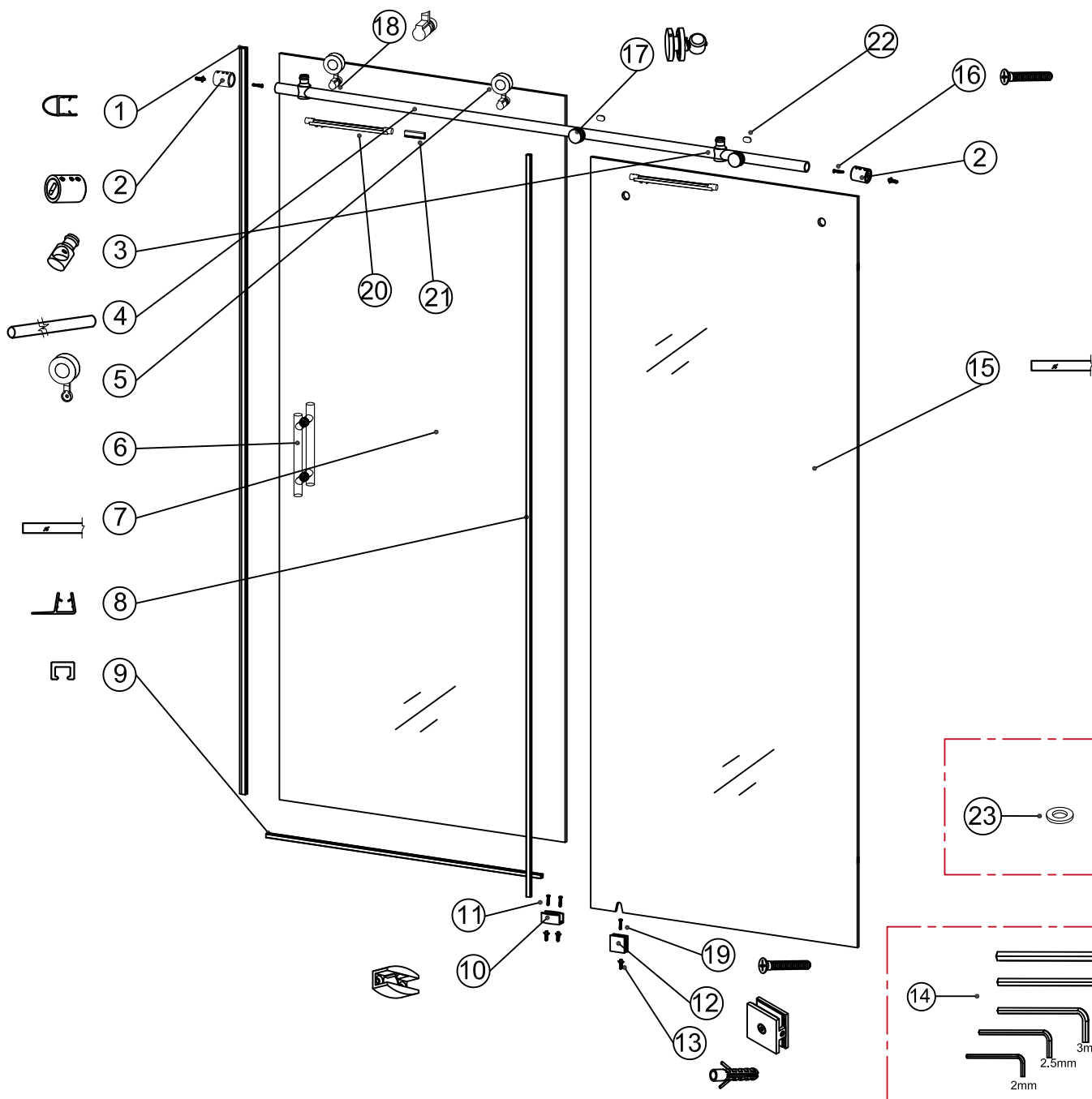


Drill



Hammer

OTHER TOOLS MAY BE REQUIRED



No.	Description	QTY	No.	Description	QTY
1.	Bumper Strip	1 pc	12.	Floor Mount Clamp	1 pc
2.	Guide Rail Bracket	2 pcs	13.	Wall Anchor	5 pcs
3.	Glass Door Stopper	2 pcs	14.	Allen Key	5 pcs
4.	Upper Guide Rail	1 pc	15.	Fixed Glass	1 pc
5.	Roller	2 pcs	16.	Screw M5X60	2 pcs
6.	Handle	1 pc	17.	Glass Bracket	2 pcs
7.	Door Glass	1 pc	18.	Safety Pin	2 pcs
8.	Side Anti-Water Strip	1 pc	19.	Screw M4X30	1 pc
9.	Anti-splash Threshold	1 pc	20.	Soft Close Block	2 pcs
10.	Guide Block	1 pc	21.	Filler-1	1 pc
11.	Screw M5X30	2 pcs	22.	Filler-2	2 pcs
			23.	Gasket	4 pcs

TIPS

01:

Open the packaging carefully and inspect all the necessary parts using detailed diagram and component list in your manual as a reference. Before discarding the carton, check for small hardware bags that tend to fall to the bottom of the box. If any parts are damaged or missing, please contact us for replacement.

02:

Retain these installation instructions for future use if in need.

1. Measure the distance between two finished walls. This distance is marked as W.

Please see Fig 1 for details:

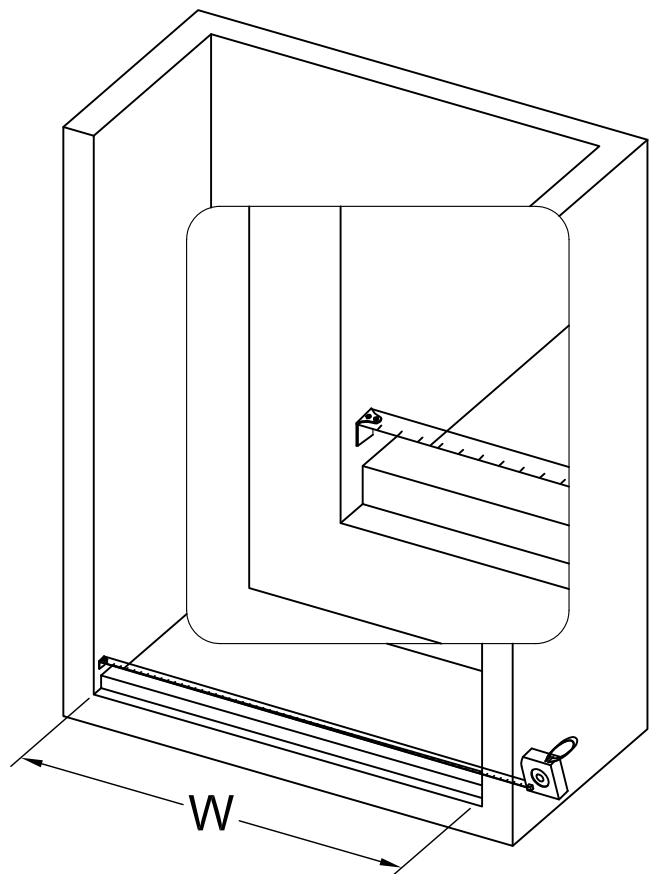
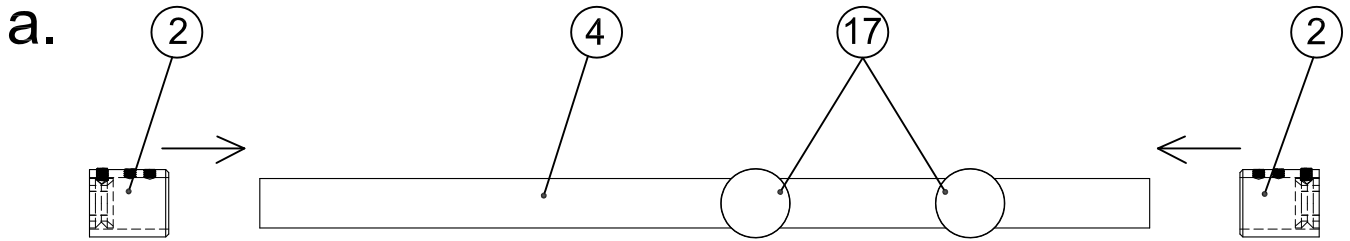
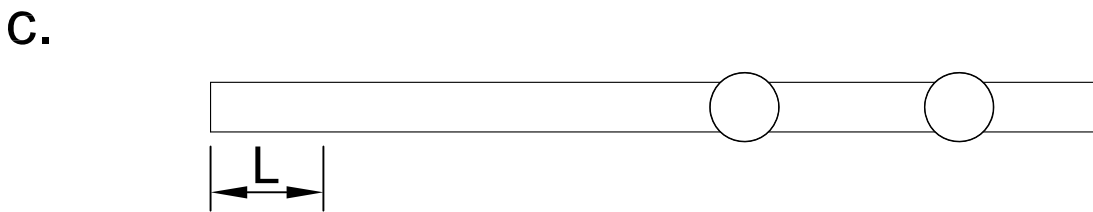
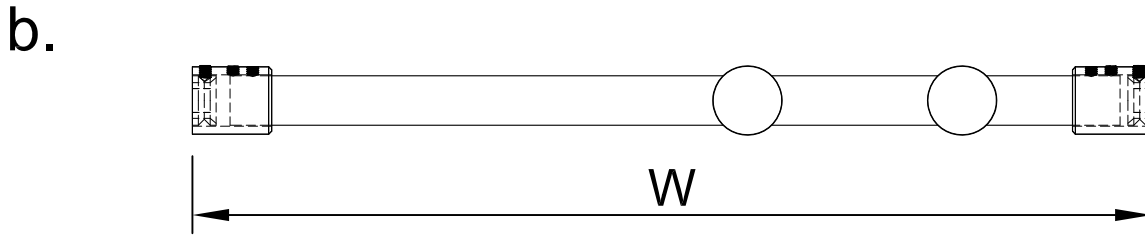


Fig 1



Note: The Glass Brackets(17) have been pre-installed to the Upper Guide Rail(4).



2. Your Upper Guide Rail (04) has been precut for your Shower model opening width, eg. 60" for shower width.

If W-width of your wall-to-wall opening is equal to the size of your Shower model, it is unnecessary to cut the Upper Guide Rail and you can continue to Step 3.

If W-width of your wall-to-wall opening is less than the size of your Shower model, you will need to cut the Upper Guide Rail from the end which is farther from the Glass brackets (17) holes.

The length to cut off will be L:

$L = \text{Shower model size} - W$
 $L = \text{Subtract } W \text{ from the size of your Shower model.}$

FOR EXAMPLE

If your wall opening $W = 59"$. Your shower model is 60".

$L = 60" - 59" = 1"$,

You have to cut 1" off from the rail.

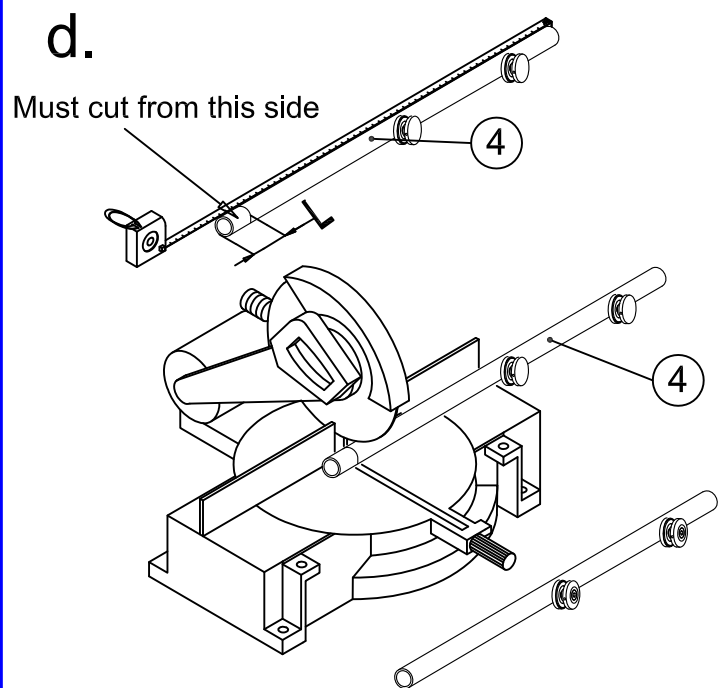


Fig 2

Please see Fig 2 for details

Fig 3 - For Right Opening Door

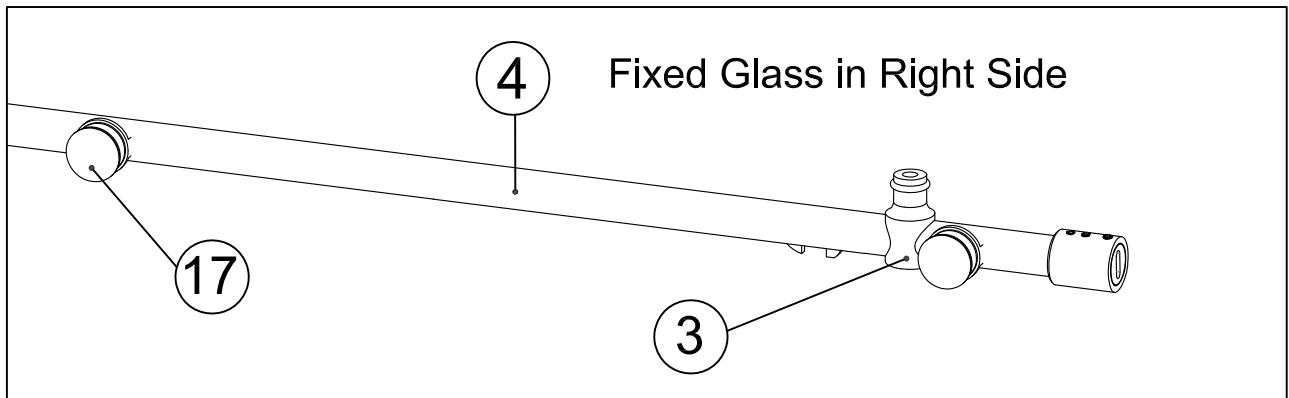


Fig 4 - For Left Opening Door

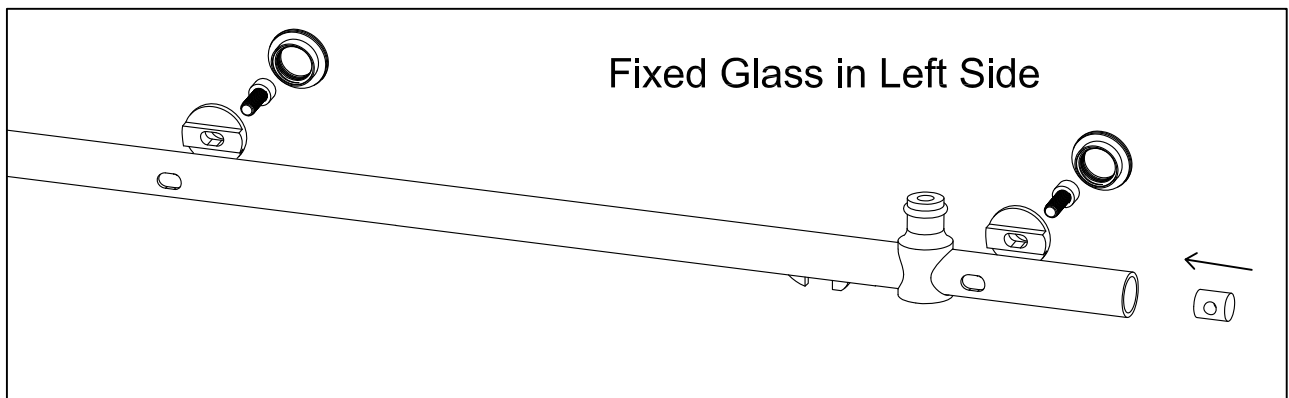


Fig 1

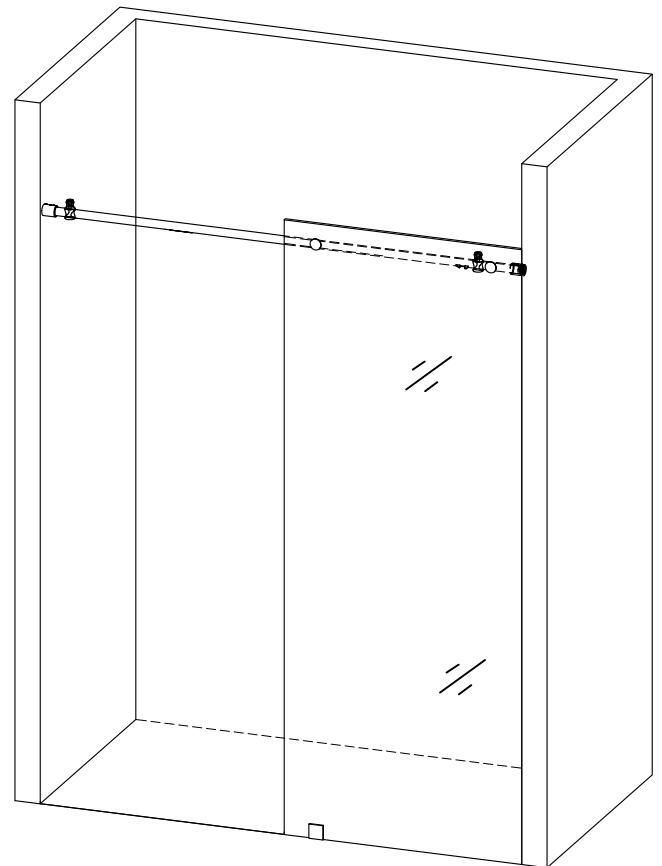
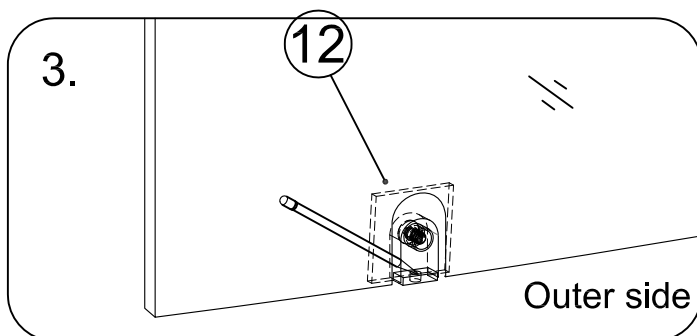
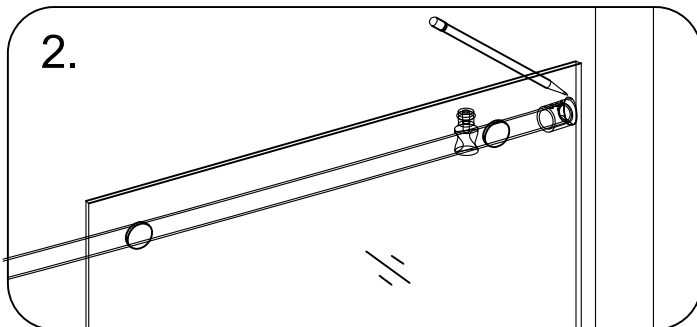
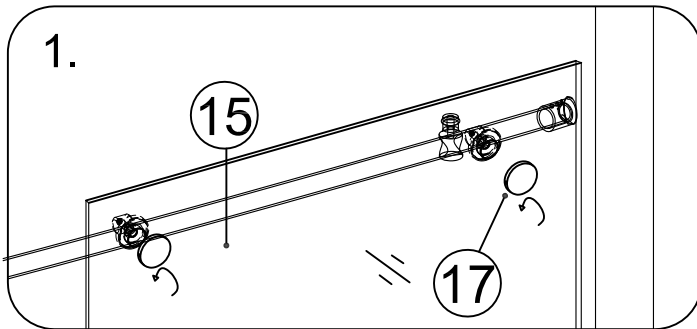
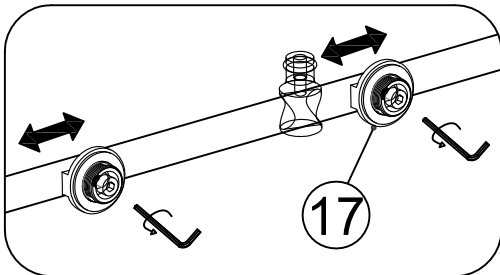
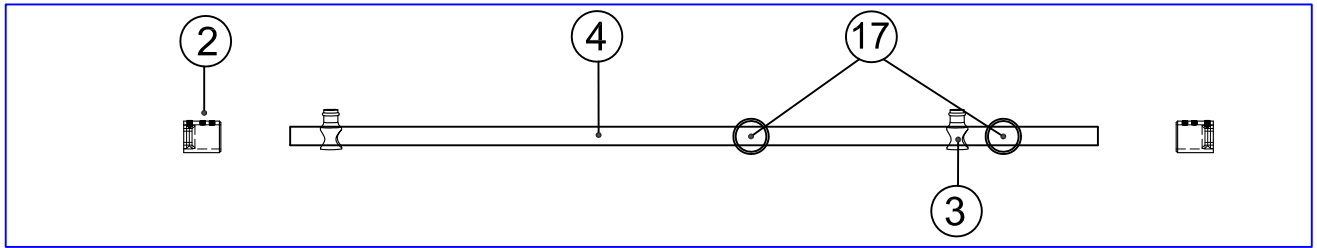


Fig 5

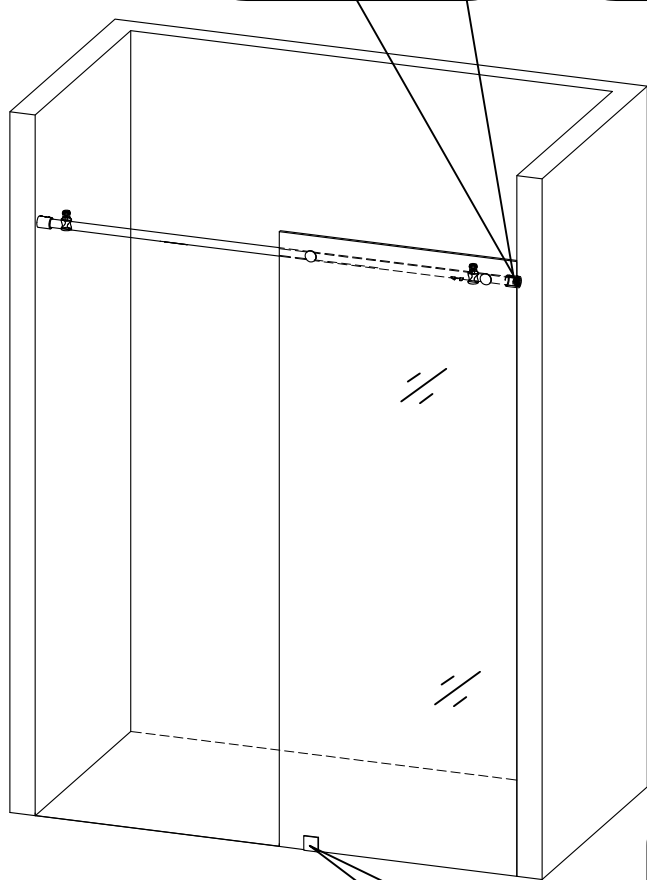
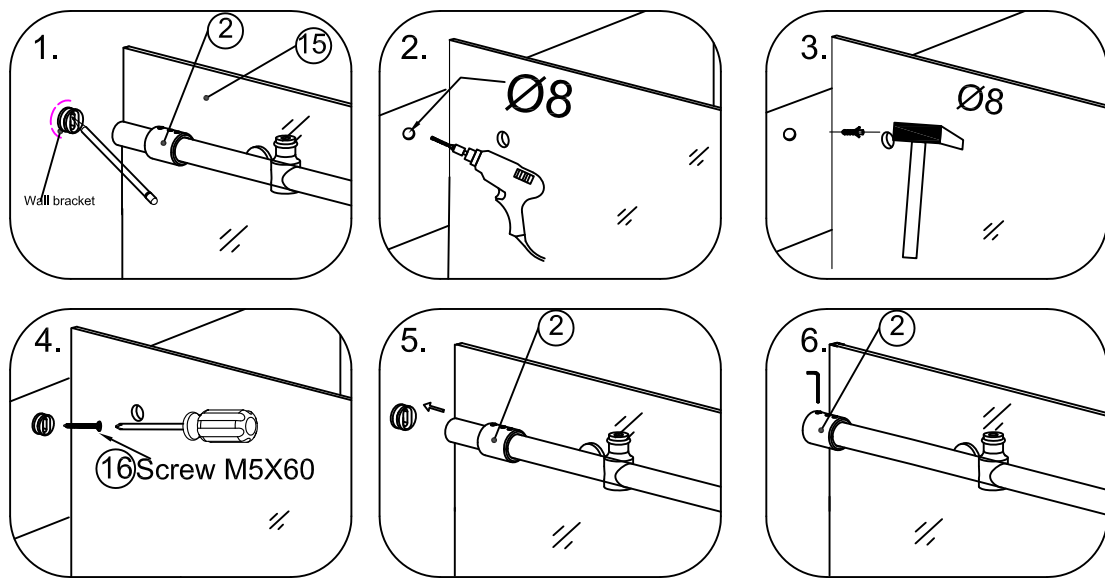
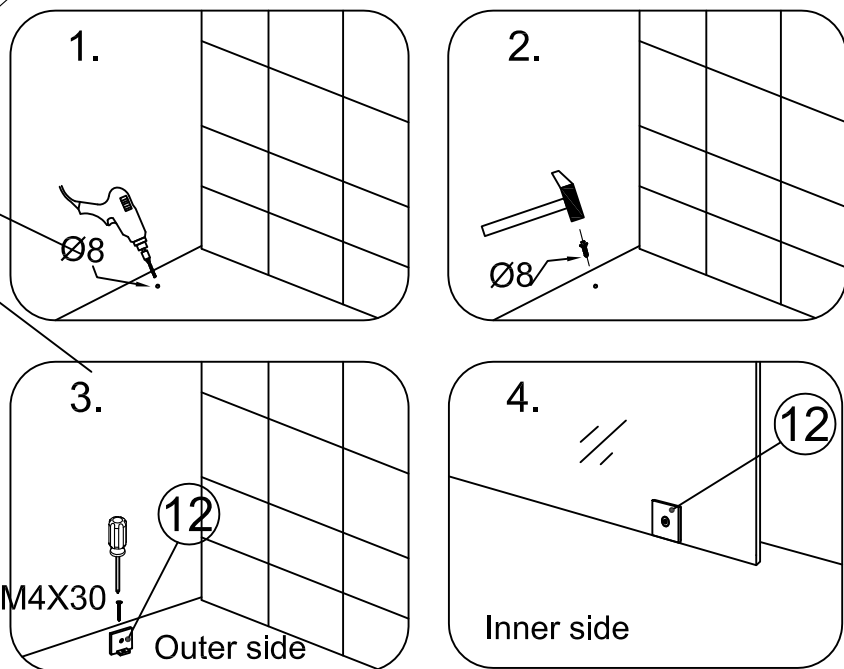


Fig 6



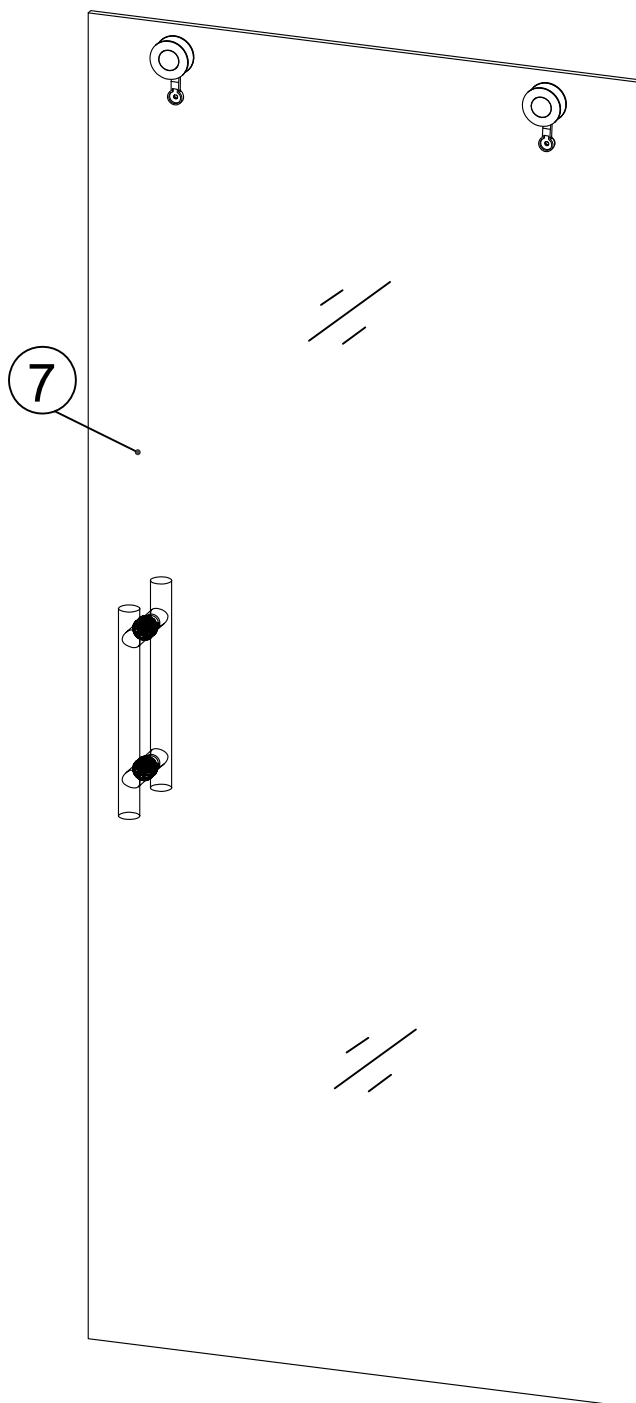
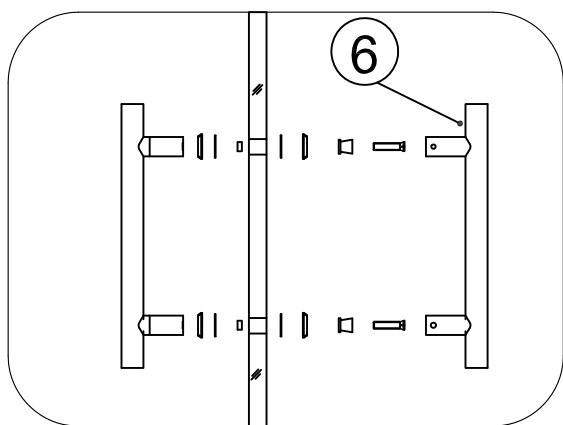
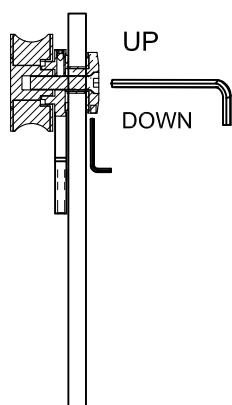
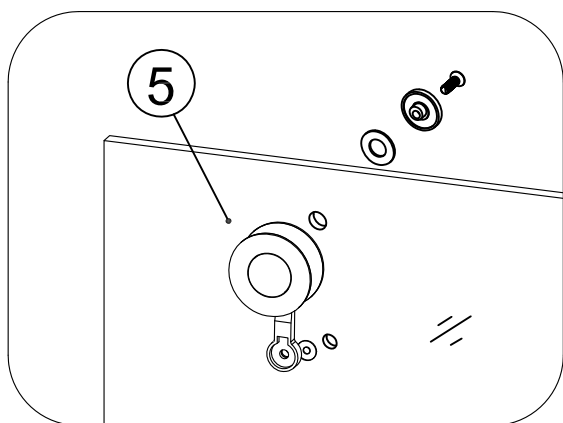


Fig 7

Rise the Door Glass to make rollers hang to the top guide rail and place the glass bottom side to the Guide Block (10) slowly.
Make sure that the Door Glass (07) will slide in the guide block, outline the drilling position, install the guide block to the shower base/threshold.

Please see Fig 8 for details

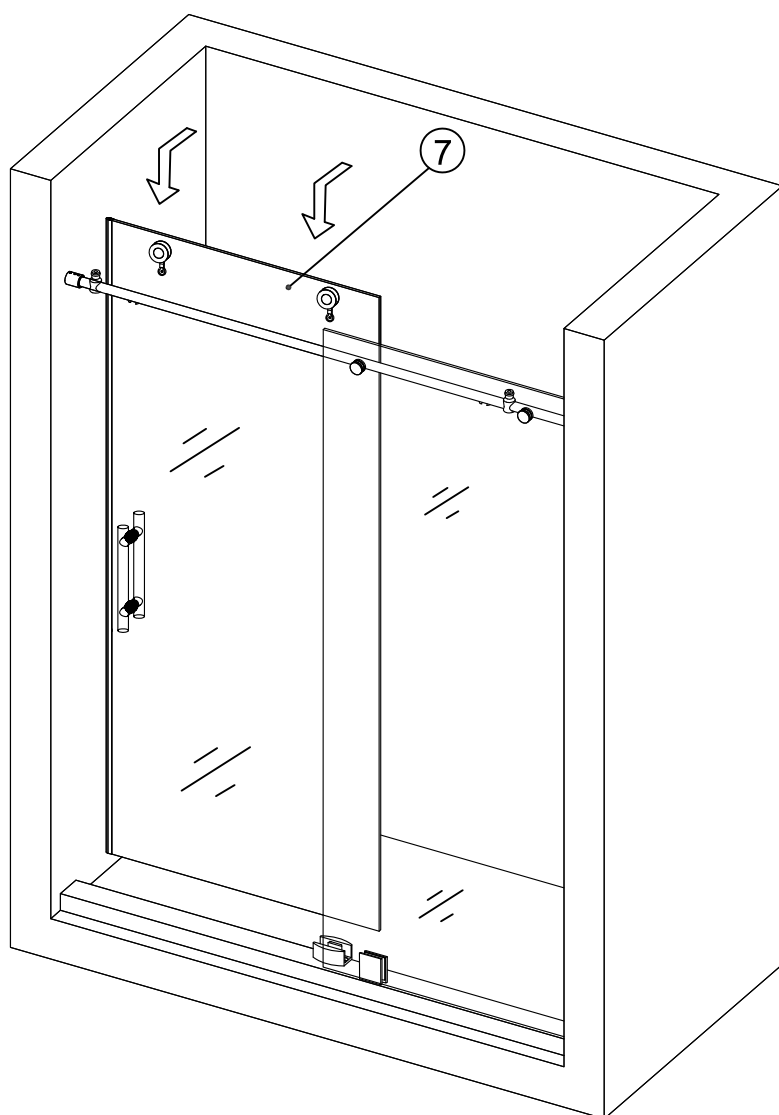
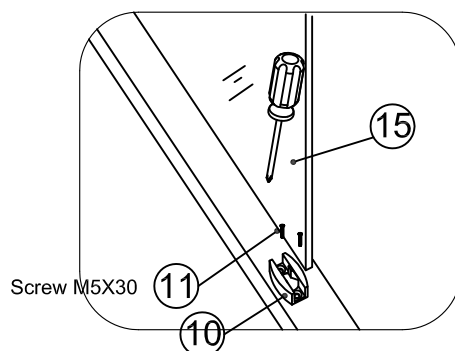
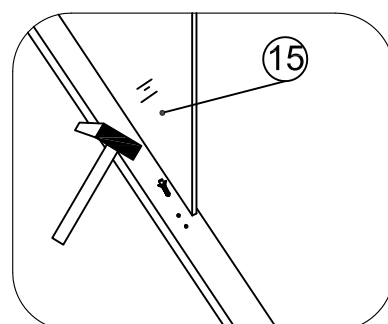
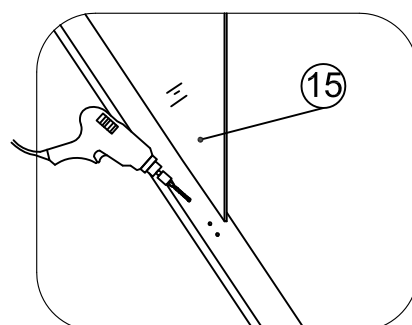
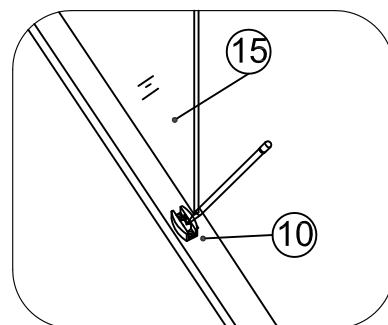
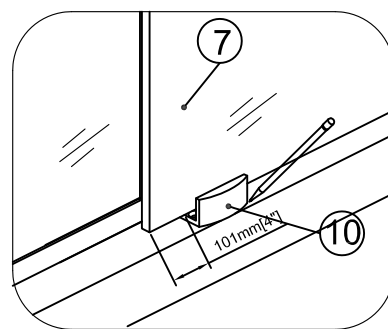


Fig 8



Install strips

Please see Fig 9 for details

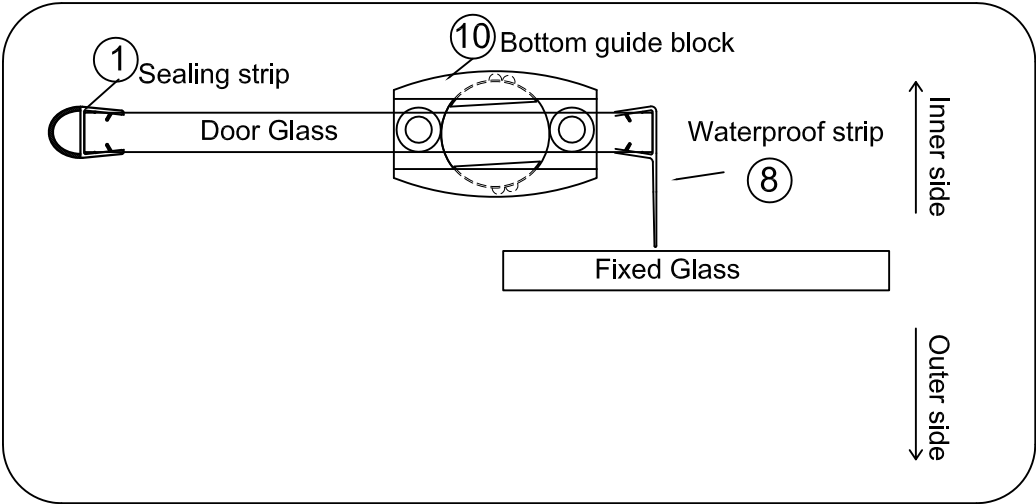


Fig 9

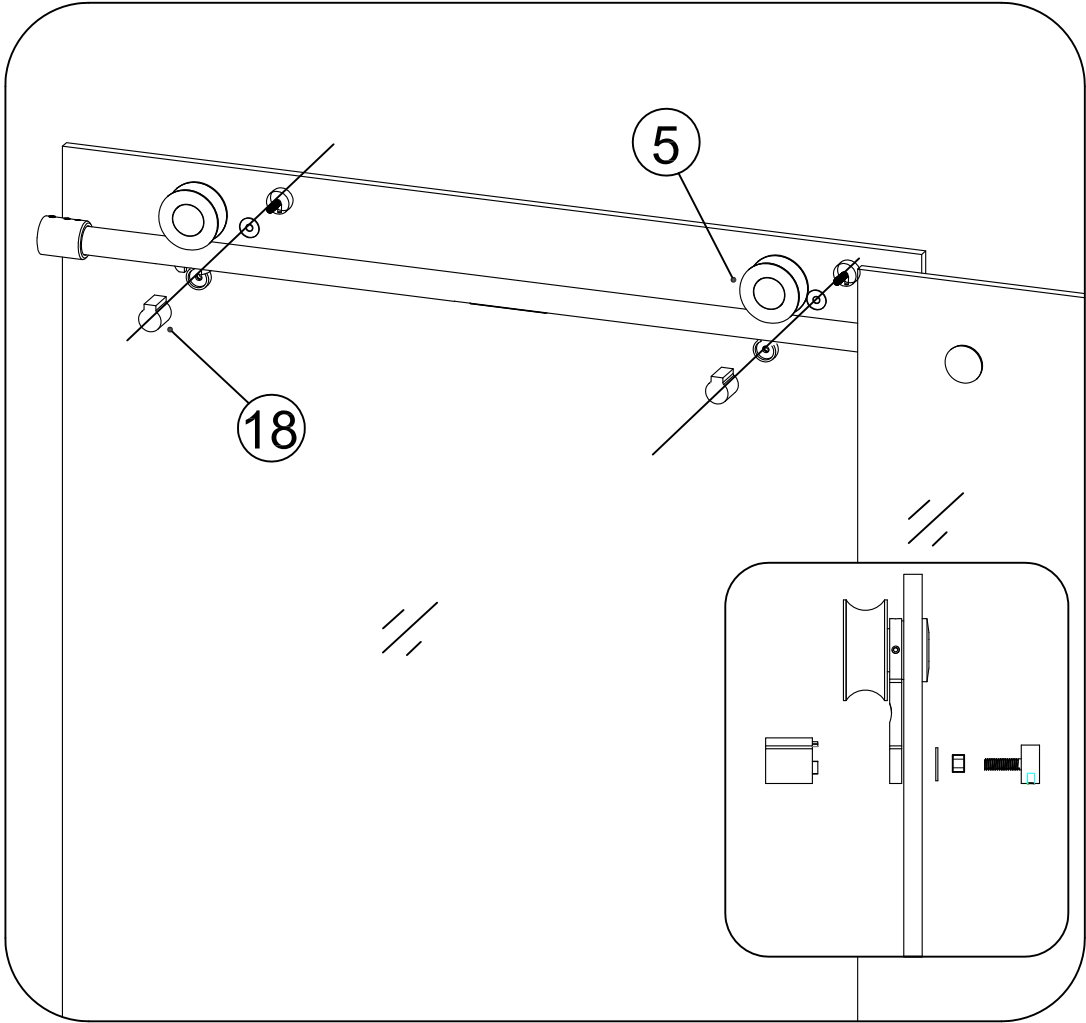


Fig 10

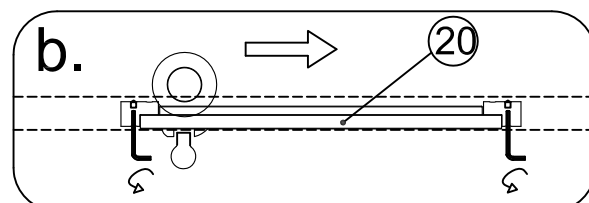
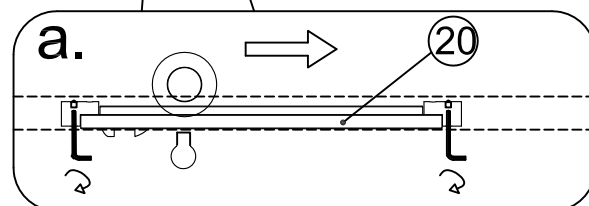
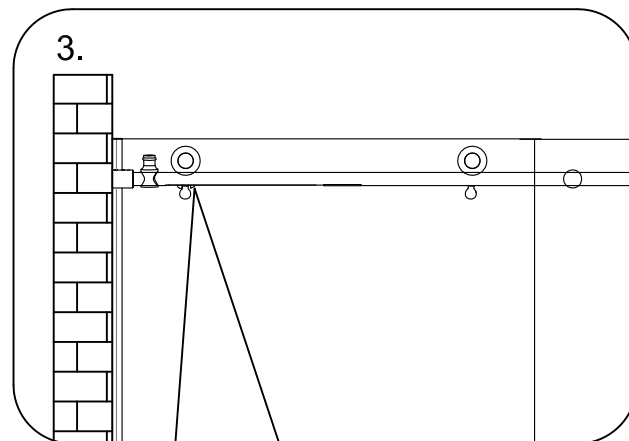
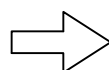
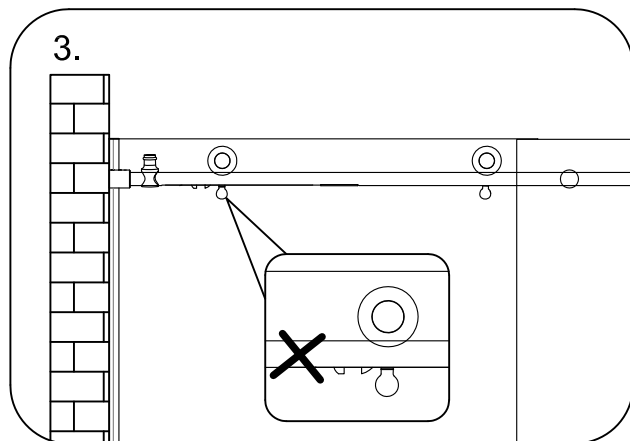
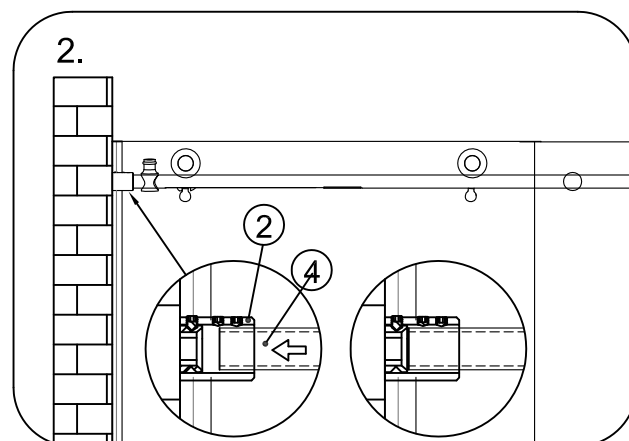
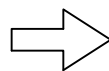
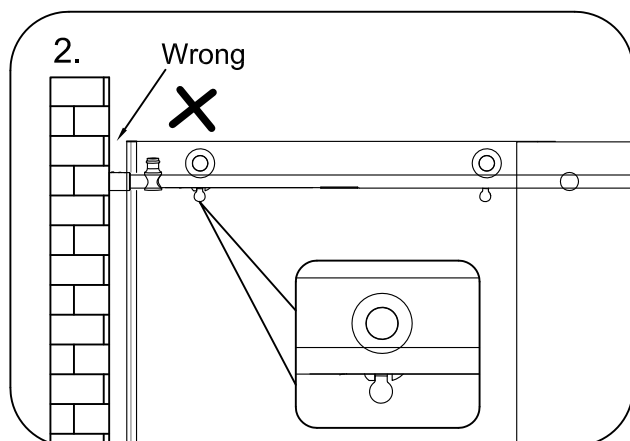
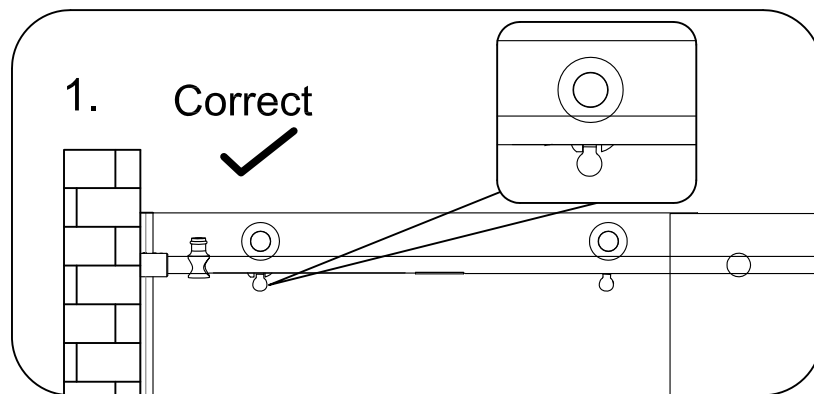


Fig 11

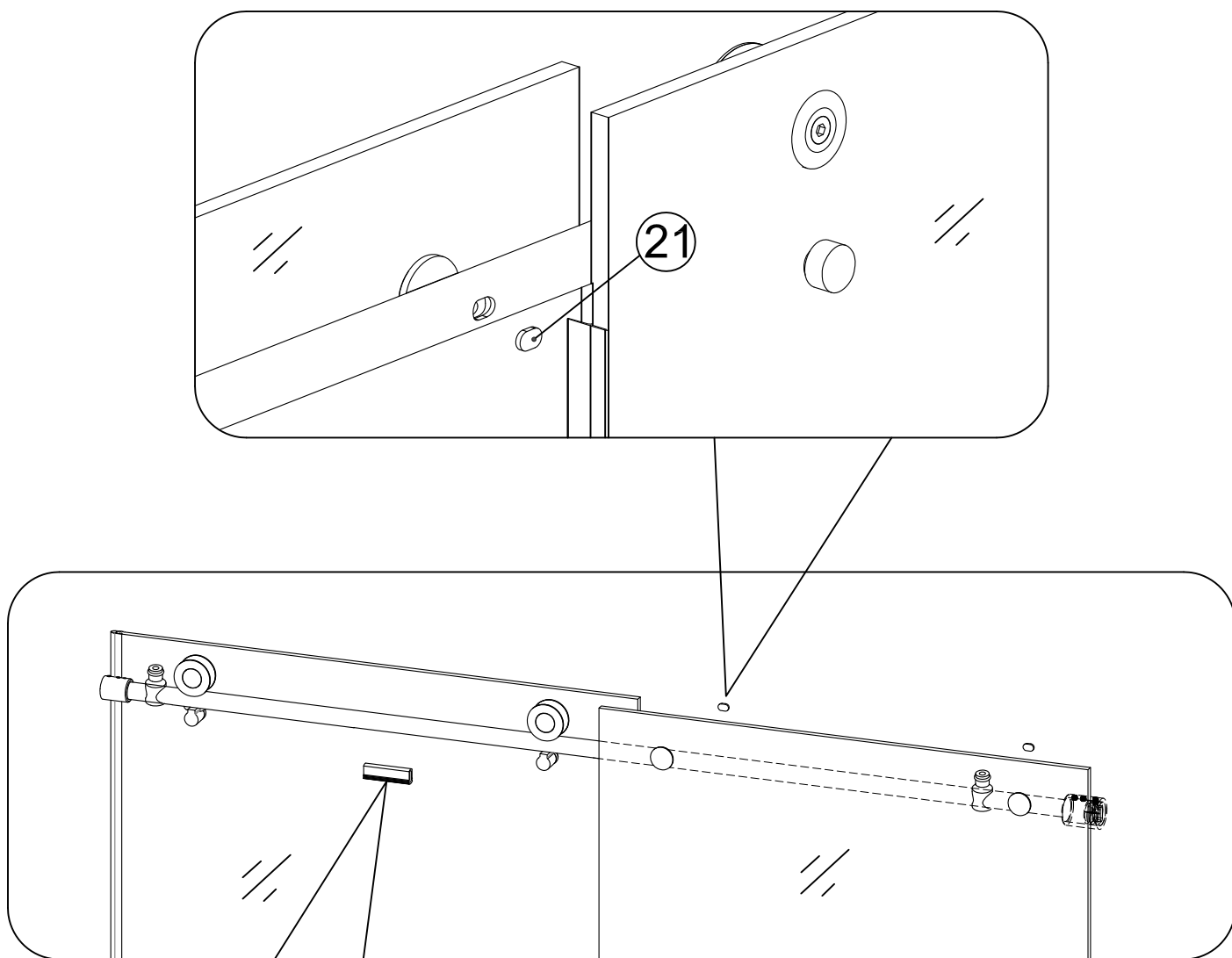
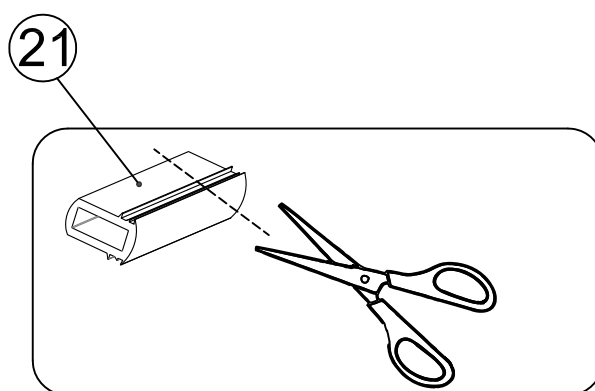
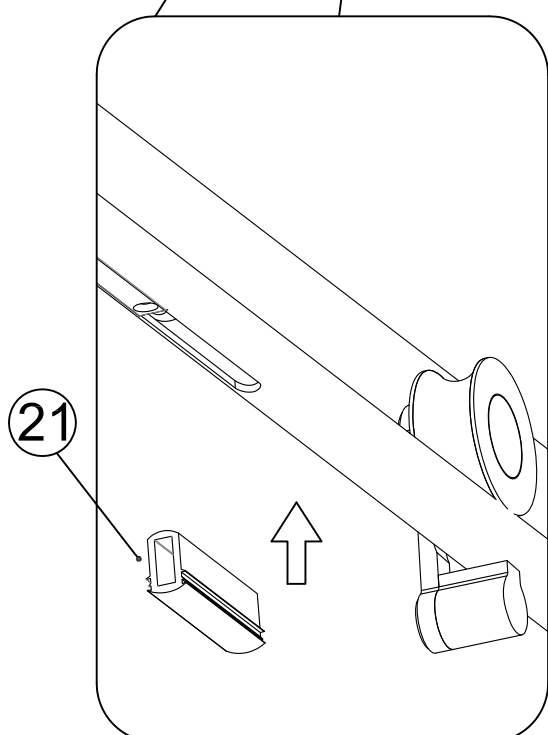


Fig 12



Install the anti-splash threshold

Put the Anti-splash Threshold (09) in front of the Door Glass (07) on the shower base/threshold, seal it to the shower base/threshold with silicone.

Please see Fig 13 for details

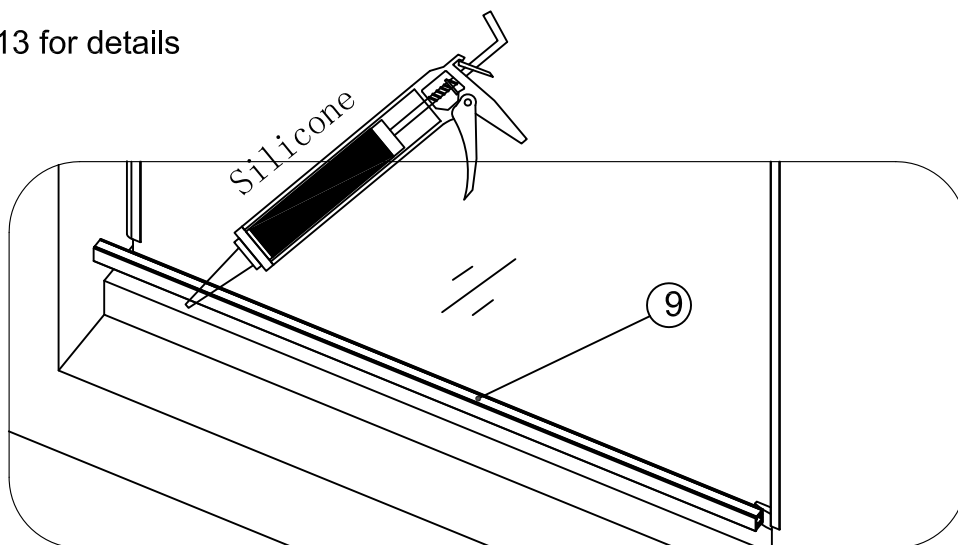


Fig 13

Apply the sealant on the seams between the bottom sealing strip and the shower base/threshold; and between the stationary glass and wall.

Please see Fig 14 for details

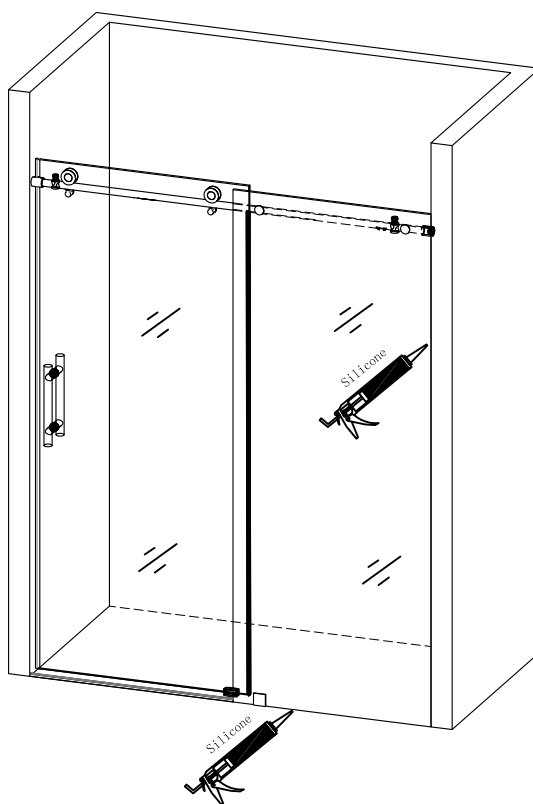


Fig 14

IMPORTANT:

MUST ALLOW SILICONE TO DRY FOR 24 HOURS BEFORE STARTING USING THE SHOWER ENCLOSURE

Fig 1

The soft-close may not work properly as following case:

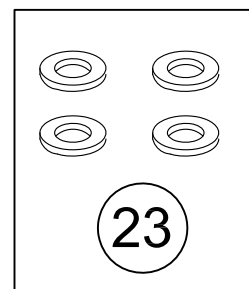
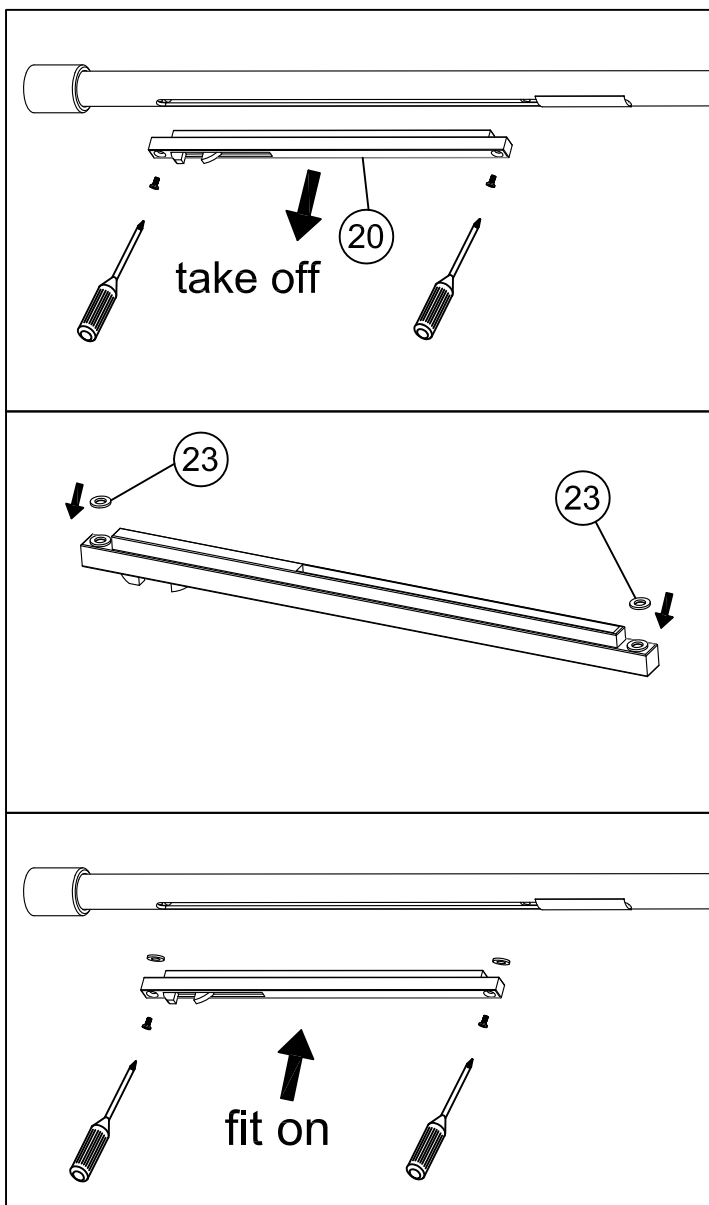
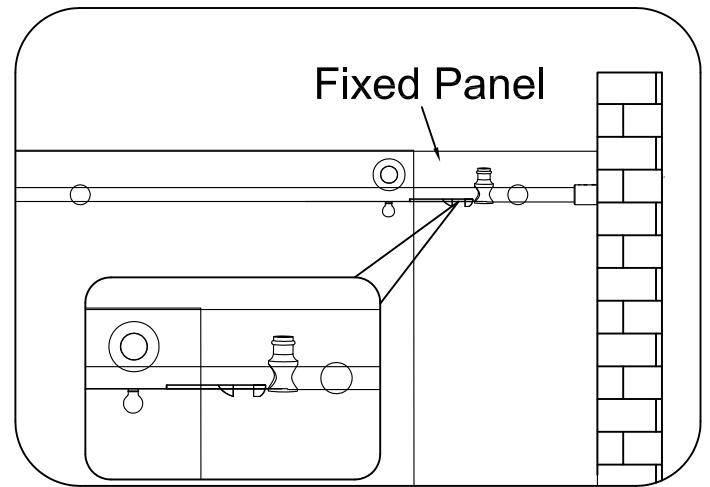
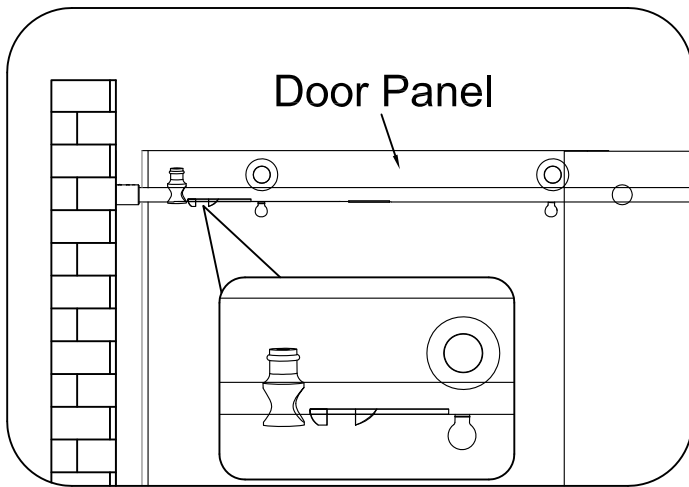


Fig 2

In the accessories package, there are 4pcs of washer(23), please keep it and do not throw for future use. When you install the shower door or at a later date, if it happens as Fig1, the soft-close not working properly, it can be solved as shown on Fig2, to add a washer at both end of the soft-close.