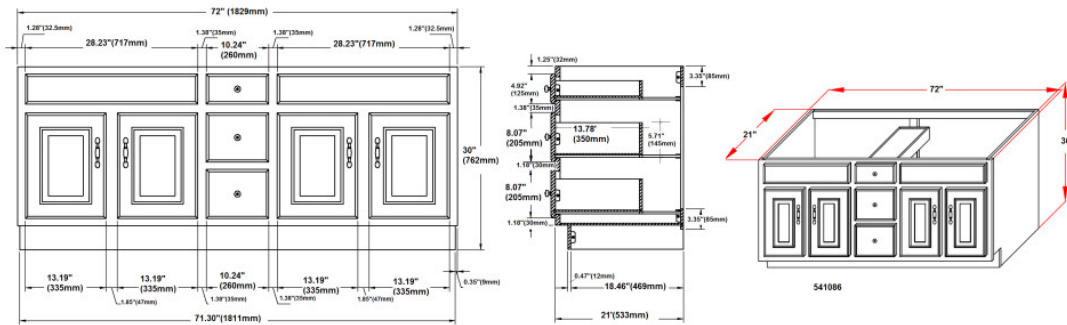


Concord Unassembled 4-Door 3-Drawer Vanity without Top 72"
White



SPECIFICATIONS

| | |
|--|-----------------------|
| MATERIAL CONSTRUCTION: | Wood |
| ASSEMBLY REQUIRED: | Yes |
| TOOLS NEEDED FOR ASSEMBLY: | Screwdriver |
| ASSEMBLED DIMENSIONS: | 30" H x 72" L x 21" D |
| ASSEMBLED WEIGHT: | 83 lbs. |
| HINGE STYLE: | Concealed |
| DOOR STYLE: | 4 Slab MDF Doors |
| DRAWER STYLE: | 3 MDF Drawers |
| GLIDE STYLE: | STD Easy Glide |
| FAKE DWR STYLE: | N/A |
| DWR #1 DIMENSIONS: | 14.25" W x 5.71" H |
| DWR CONSTRUCTION: | Standard |
| SHELF STYLE: | N/A |
| SHELF ADJUSTABILITY INCREMENTS: | N/A |
| SHELF MAX WEIGHT CAPACITY: | N/A |
| SHELF DIMENSIONS: | N/A |
| SHELF THICKNESS: | N/A |
| SHELF MATERIAL: | N/A |

| | |
|------------------------------|---------|
| FRAME STYLE: | N/A |
| FACE FRAME MATERIAL: | Pine |
| SIDES MATERIAL: | Plywood |
| BOTTOM MATERIAL: | Plywood |
| TOE KICK INSET WIDTH: | 4" |
| BACK PANEL MATERIAL: | N/A |
| BACK BRACE MATERIAL: | Plywood |



| | |
|----------------------------|-------------------------|
| WARRANTY: | 1-Year limited warranty |
| CARB COMPLIANT: | CARB Phase 2 |
| TITLE IV COMPLIANT: | Yes |



| |
|--------------------|
| TYPE: |
| JOB: |
| ORDER CODE: |
| APPROVALS: |