



Whist®

Under-mount Bathroom Sink

K-2741-G2

Features

- Bowl-shaped basin in Dew with concentric ring styling.
- Glass material provides a strong durable surface that is easy to clean yet visually distinctive.
- Fits in or within a standard size countertop and works with a variety of faucet styles.
- The Whist sink is available in clear glass (Ice), Translucent colors, and Opaque colors.

Material

- Glass.

Installation

- No faucet holes; requires wall-or counter-mount faucet.
- Undermount.

Recommended Products/Accessories

K-7107 Decorative Drain
K-7108 Decorative Drain
K-7129 Drain
K-9018 P-Trap
K-23726 Drain treatment
K-23723 Faucet cleaner

Included Components

Additional Components:
Hardware kit
drain gasket kit



ADA

CSA B651

OBC

Codes/Standards

CSA B45.11/IAPMO Z401
ADA
ICC/ANSI A117.1
CSA B651
OBC

KOHLER® One-Year Limited Warranty

See website for detailed warranty information.

Available Colors/Finishes

Color tiles intended for reference only.

Color	Code	Description
-------	------	-------------



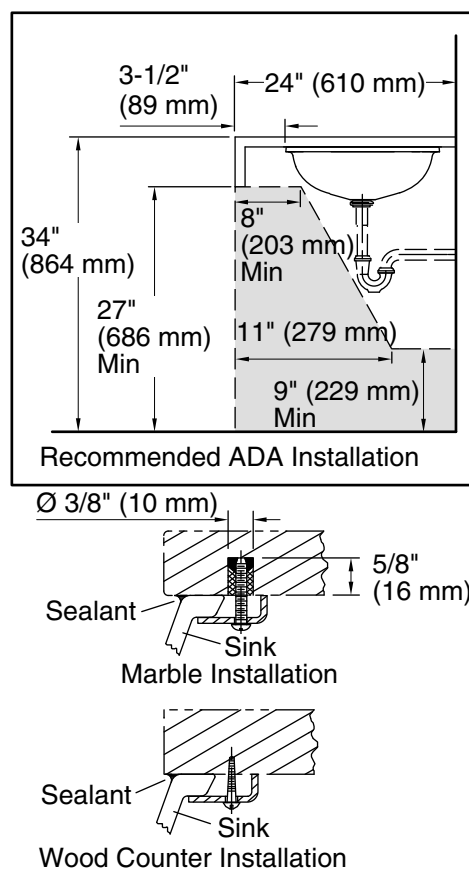
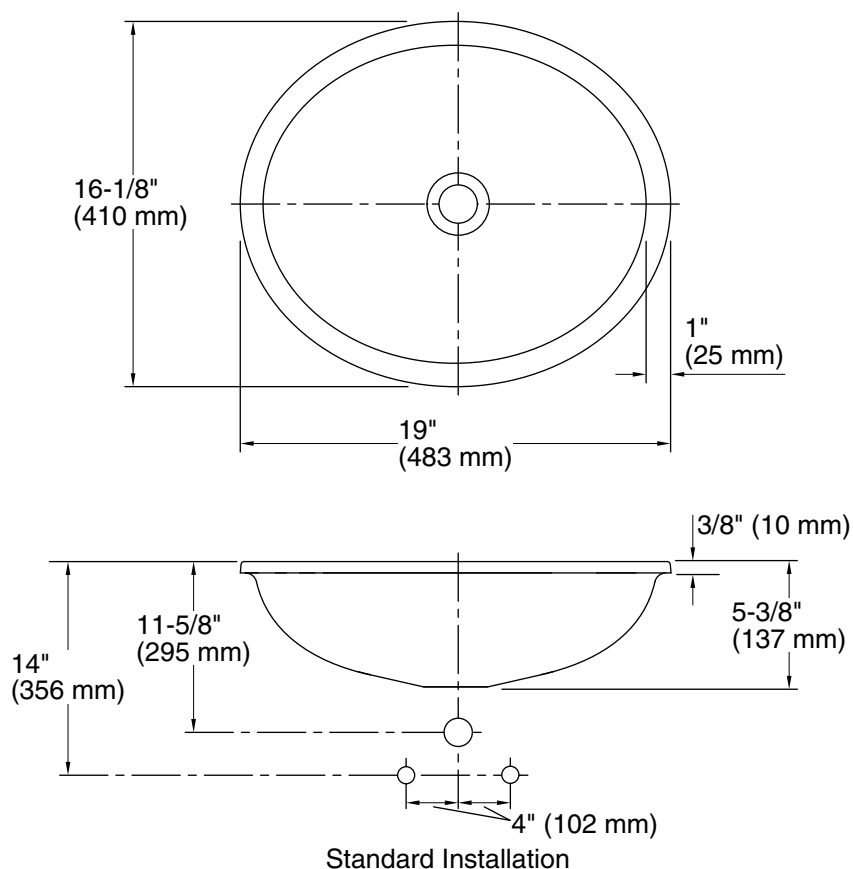
B11	Ice
-----	-----

KOHLER®

Whist®

Under-mount Bathroom Sink

K-2741-G2



Technical Information

All product dimensions are nominal.

Bowl configuration: Single

Installation: Under-mount

Bowl area: Length: 17-3/16" (437 mm)
Width: 14-3/16" (360 mm)
Bowl depth: 4-3/4" (121 mm)
Water depth: 4-3/4" (121 mm)

Drain hole: 1-3/4" (44 mm)

Template: 1151011-7, required, included

Notes

Install this product according to the installation instructions.

Product does not have an overflow.

NOTICE: Countertop manufacturer or cutter must use the cut-out template provided with the product, or a current one provided by Kohler Co. (call 1-800-4-KOHLER). Kohler Co. is not responsible for cutout errors when the incorrect cut-out template is used.

ADA, OBC, CSA B651 compliant when installed to the specific requirements of these regulations.