

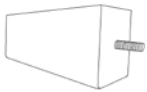

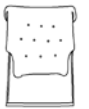

Important safety instructions:

- Please read carefully all instructions before assembling.
- For your safety and ease,assembly by two or more adults is recommended.
- Keep instructions for future use.

Pre-assembly:

- Do not discard any content until assembly is completed to avoid accidentally discarding small parts or hardware.
- Remove all parts and hardware from box along with any protective packaging.

Parts List

Item	Description	DRAWING	QTY
P1	Front Legs		2
P2	Back Legs		2
P3	Backrest		1
P4	Chair Seat		1

Hardware List

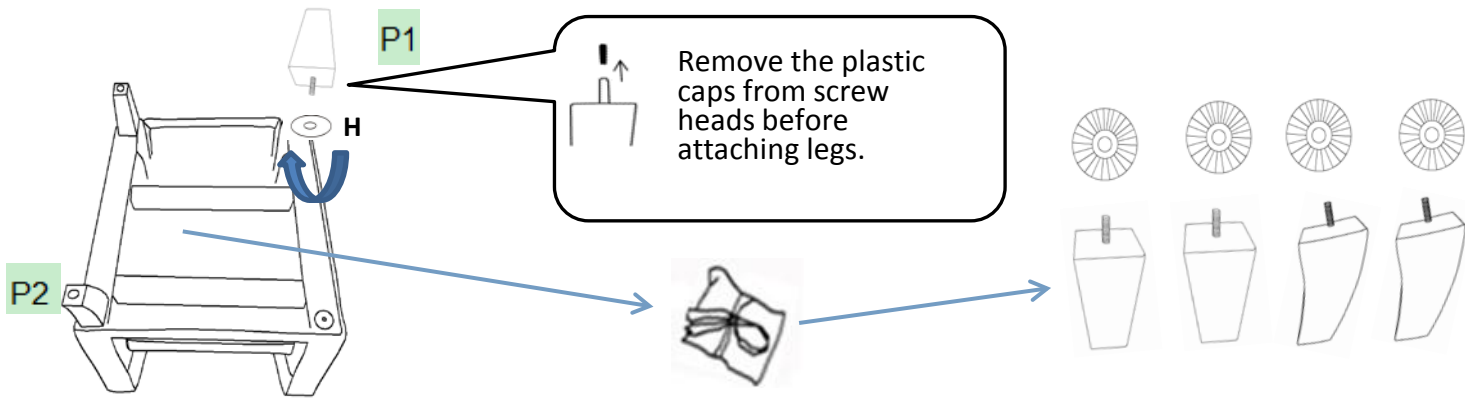
Item	Description	DRAWING	QTY
H1	Plastic washers		4

DISCLAIMER:

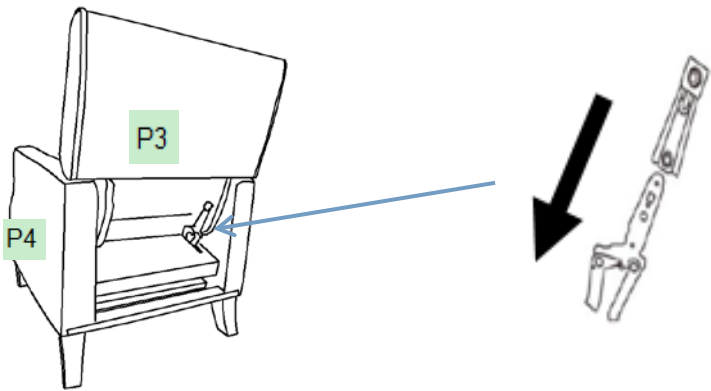
WHEN PROPERLY ASSEMBLED,THIS ITEM IS SAFE FOR INTENDED USE.SELLER IS NOT LIABLE FOR ANY DAMAGES RESULTING FROM ITEM BEING IMPROPERLY ASSEMBLED AFTER PURCHASE.

Assembly Procedures:

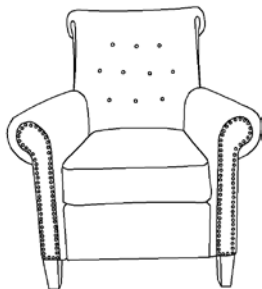
Step1. Remove the non-woven cover at bottom of the chair and take out the legs, Screw in the feet (P1&P2) into the screw holes underneath the base using the plastic washers (H1)



Step2. Insert the small metal arms on the sides of the Chair Backrest(P3) into the prefabricated slide lock gadget on the Chair Seat(P4) as shown below.



Step3. Put the chair upright on a level surface. Assemble is complete.



ADDITIONAL NOTE ABOUT SAFETY:

BOLTS MAY LOOSEN DURING NORMAL EVERYDAY USE.
THEY SHOULD BE INSPECTED AT LEAST EVERY 3 MONTHS AND RE-TIGHTENED AS NEEDED TO PREVENT DAMAGE OR INJURY,AND ENSURE STABILITY.

Thank you for your purchase