

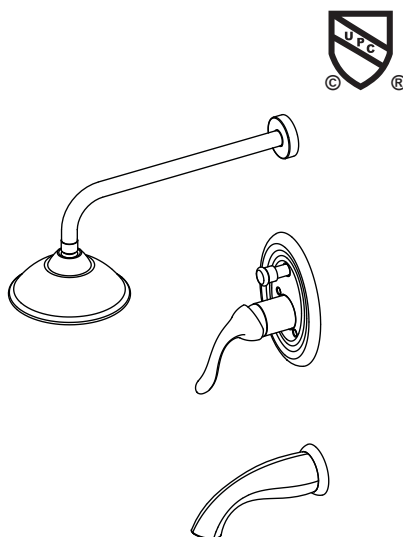


Eleganza

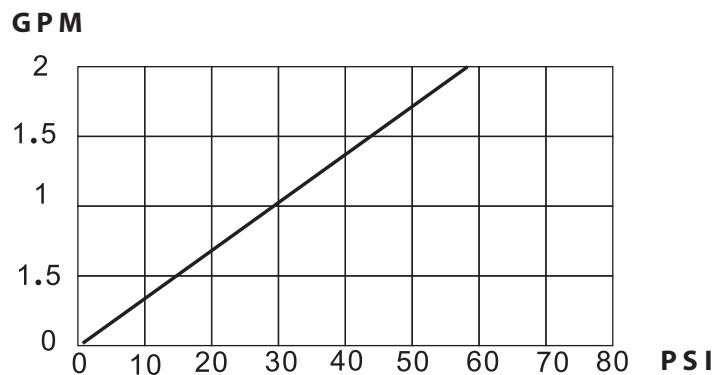
Tub and Shower Bathroom Faucet

STANDARDS

- ASME A112.18.1/CSA B125.1
- ASME A112.18.2/CSA B125.2
- LISTED IAPMO/cUPC



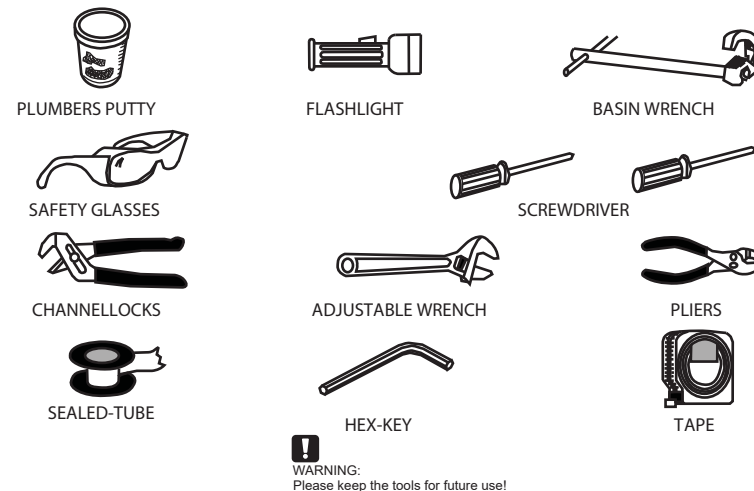
Flow Rate Chart



Helpful Information

Tools:

Gather the necessary tools as shown below to complete the installation of this faucet. Some may not be needed depending on the model of faucet you are installing. Check with your local hardware store on the requirements of your installation situation.

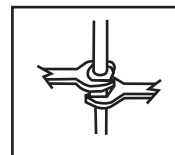


Attention:

For easy installation, you will need:

- To read all the installation instructions completely before beginning.
- To read all the warning, attention and maintenance information.
- To purchase the proper supply lines.

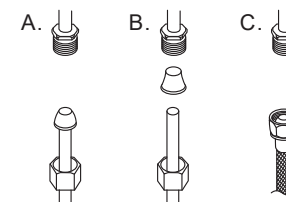
Important



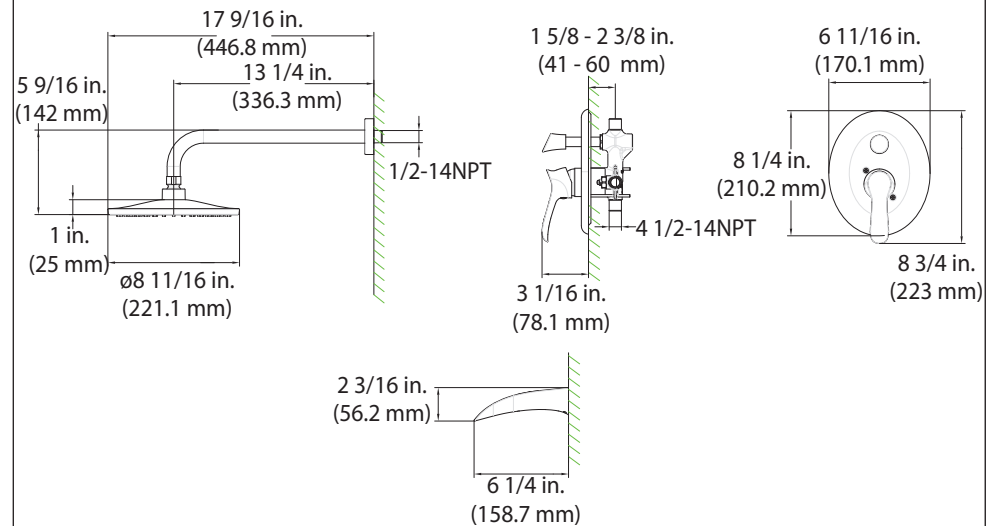
Tighten connection with two wrench to prevent damage to tube body. Be careful not to bend the stem as this will void the product warranty.

Connect to water supply lines with either:

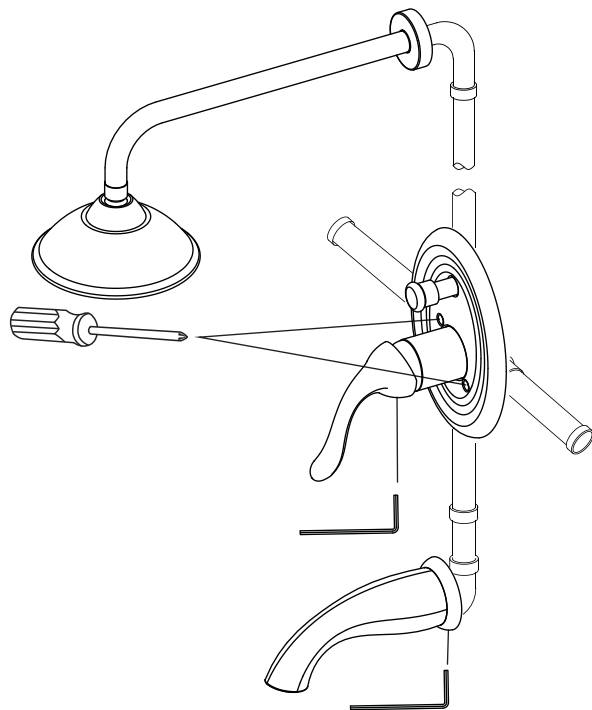
- (A) 3/8" O.D.copper tubing (ball nose risers with the coupling nuts or;
- (B) 3/8" copper tubing (no ball) with supplied tube head interior connector or;
- (C) IPS faucet connectors (1/2") .



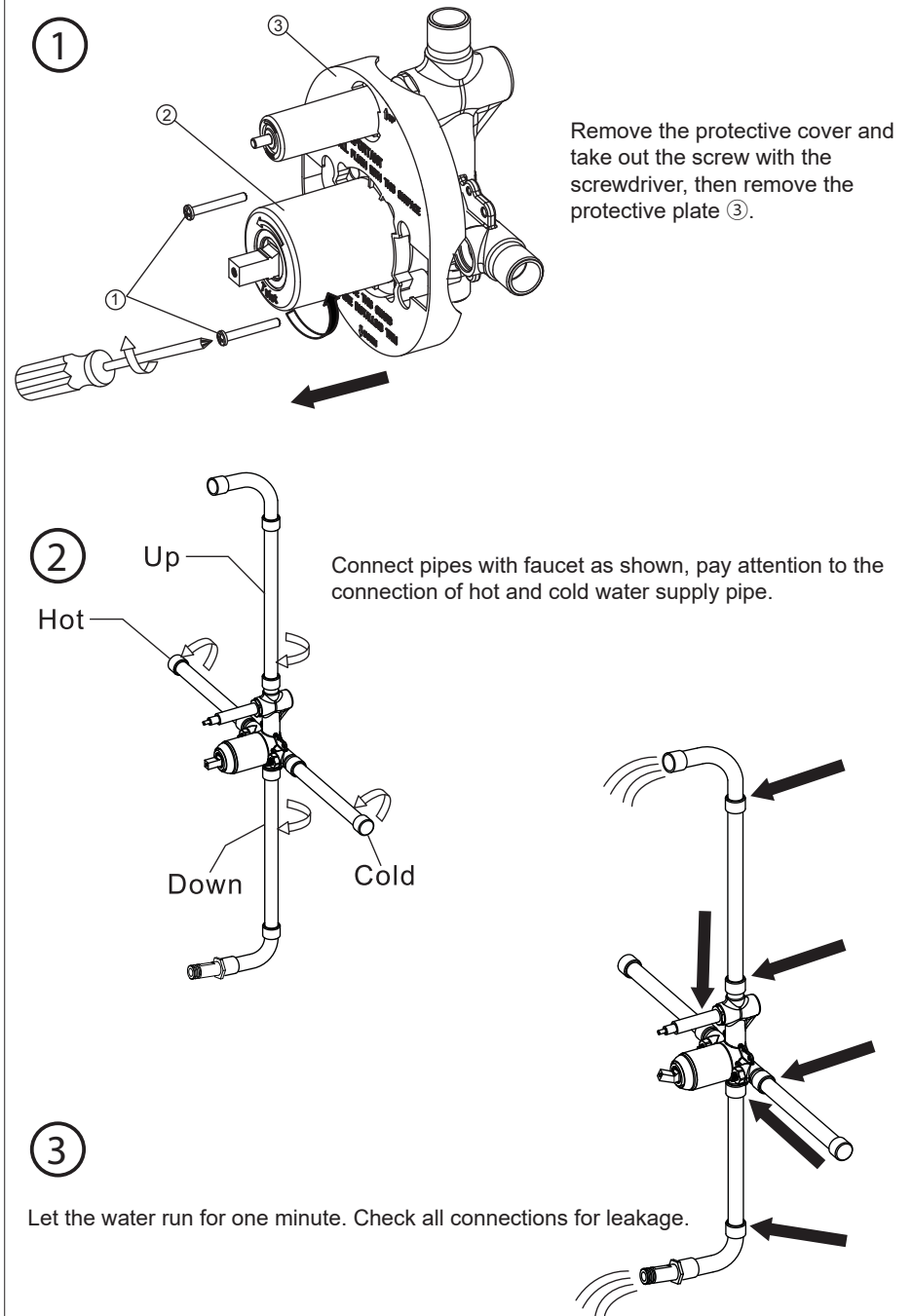
Installation size map



Tools might be applied to the following places:



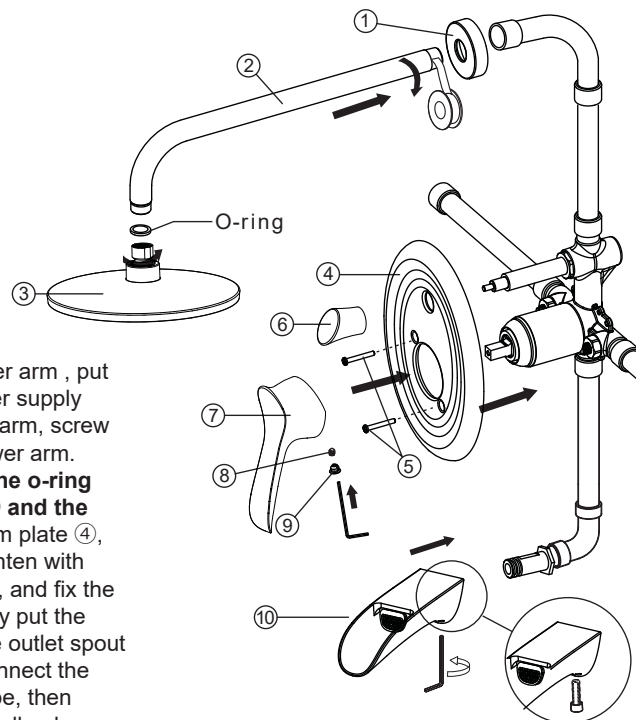
Faucet Installation



4

Apply teflon tap to the shower arm , put flange and connect it to water supply pipe. After fixing the shower arm, screw the shower head to the shower arm.

ATTENTION: don't forget the o-ring between the shower arm② and the shower head③. Position trim plate ④, fix it with screws ⑤, then tighten with screwdriver. Put the knob⑥ , and fix the handle⑦ with screw⑧, finally put the index ⑨. Then assemble the outlet spout ⑩, loosen the screw and connect the spout to the water supply pipe, then tighten the screw again with allen key.



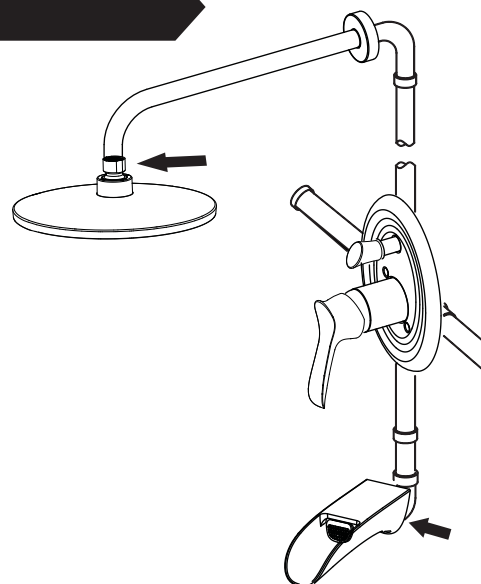
Checking and Testing

5

Check all connections at arrows for leaks, retighten if necessary.

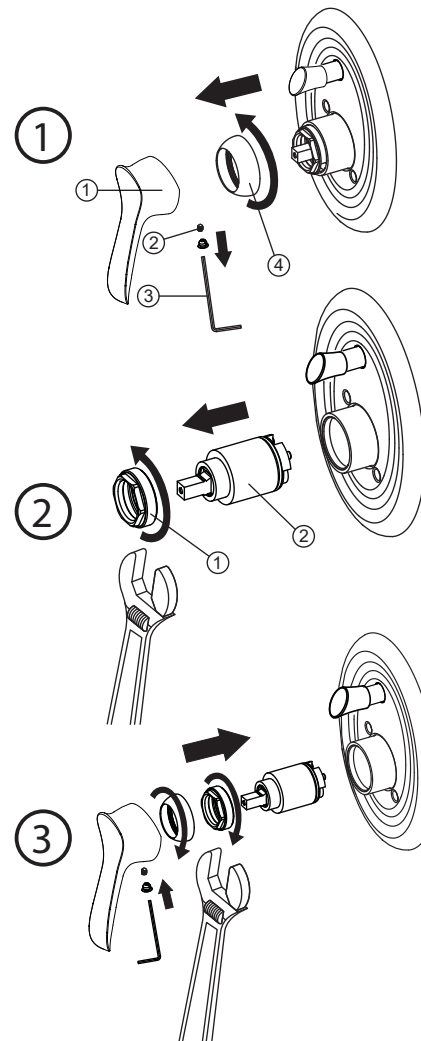


BUT DON'T OVERTIGHTEN



Maintenance

If faucet leaks from the handle or drips from spout, please replace cartridge following the steps:



Remove the handle screw with allen key③, take out the handle①, then remove the trim cap④.

Unscrew the cartridge nut①with adjustable wrench②, then take out the old cartridge②.

Place a new cartridge in the cartridge seat, then screw the cartridge nut and assemble the handle by securing the screws.

Maintenance:

Simply rinse the surface with clear water or mild liquid detergents (if necessary). Dry the faucet with a clean soft cotton cloth. Do not use any cleaning agents containing acids polish abrasives or harsh cleaners.

Cleaning and care

Daily cleaning and care are required in order to keep the product shining and working properly.

1. Clean it with water and dry it with soft cloth.
2. Clean the product with gentle liquid or glass cleaner.
3. Don't use acid cleaner.
4. Don't clean with abrasive material, abrasive paper or knife.

ANGONA



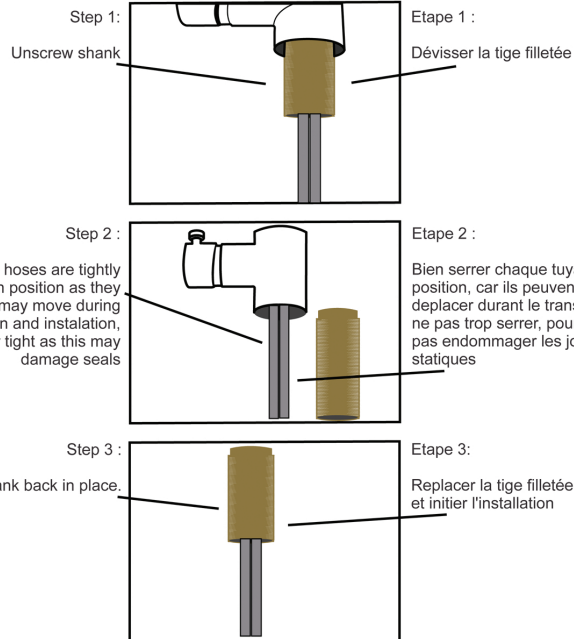
WARNING

Ensure hoses are tightly screwed in position as they may move during transportation and installation.

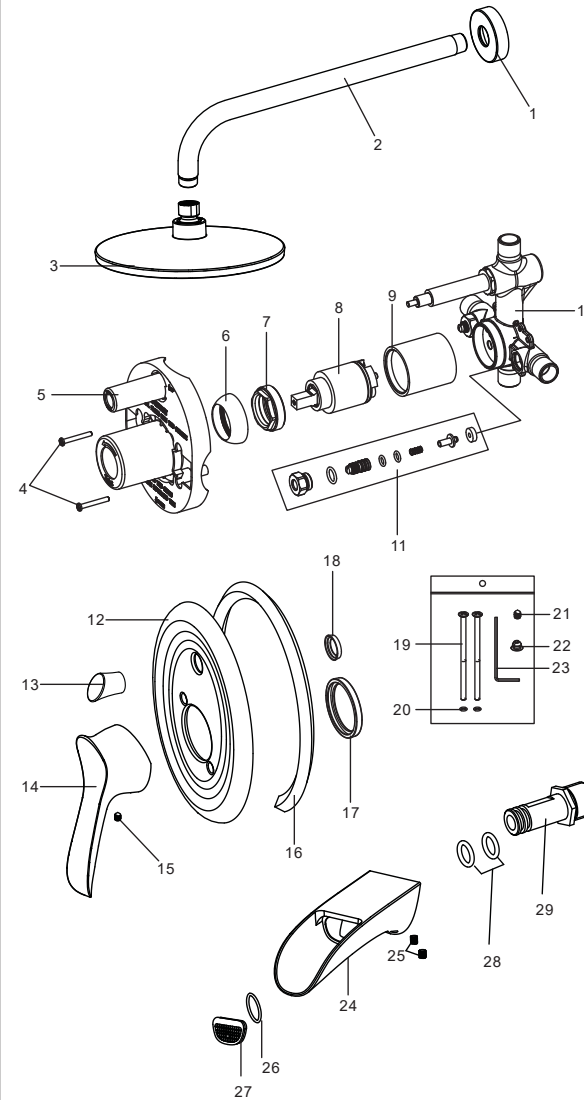


ATTENTION

Assurez-vous de bien serrer les embouts de chaque Tuyau car ils peuvent se dévisser lors du transport – bien valider après l'installation aussi



Parts list



NO.	PART NAME
1	Flange
2	Shower arm
3	Shower head
4	Screw
5	Protect cover
6	Trim cap
7	Cartridge locknut
8	Cartridge
9	Sleeve
10	Body
11	Check valve
12	Trim plate
13	Knob
14	Handle
15	Screw
16	Joint
17	Joint
18	Joint
19	Screw
20	O-ring
21	Screw
22	Index
23	Allen key
24	Spout
25	Screw
26	O-ring
27	Aerator
28	O-ring
29	Connector