
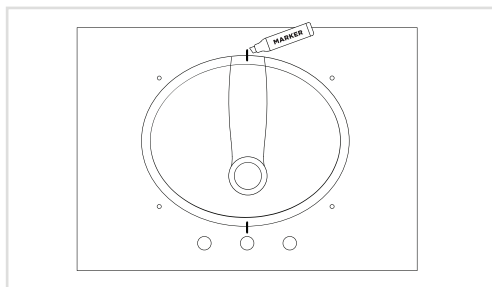


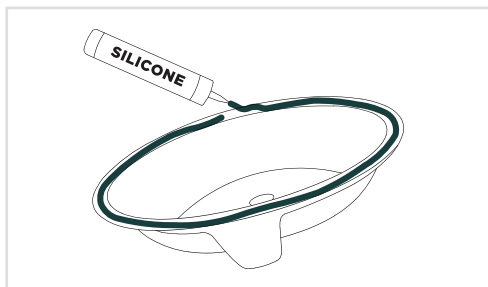
**STOP**, please make sure the cabinet is level before installing the countertop

INCLUDED	NEEDED	HARDWARE	
<ul style="list-style-type: none"> <li>• Base cabinet</li> <li>• Countertop</li> <li>• Sink basin</li> <li>• Backsplash</li> <li>• Hardware</li> </ul>	<ul style="list-style-type: none"> <li>• Permanent marker</li> <li>• Silicone - (Recommend Liquid Nails #LN-933 or Loctite #PL530 or GE Silicone II #M90010)</li> <li>• Epoxy - (Recommend Loctite #1365868 or Gorilla Glue #4200101)</li> <li>• Caulking gun</li> <li>• Power Drill</li> <li>• Drywall Screws</li> </ul>	<p><b>A</b>  Bolts (4)</p> <p><b>C</b>  Washers (4)</p>	<p><b>B</b>  Wing nuts (4)</p> <p><b>D</b>  Undermount clips (4)</p>



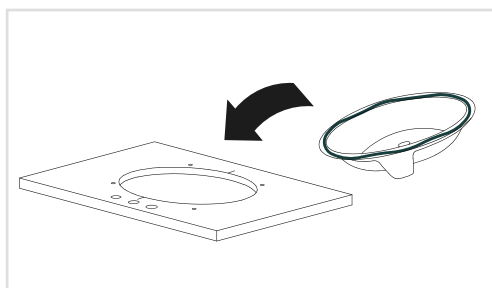
### STEP 1 - PLACE & TRACE

Place the sink basin on the bottom of the countertop, making sure to center over the opening. Draw guide lines on the countertop and the basin in two locations.



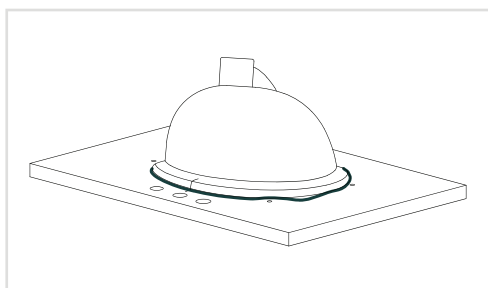
### STEP 2 - PREPARE SINK BASIN

Using a caulking gun, apply a heavy amount of silicone of your choice on the top side of the sink basin edge.



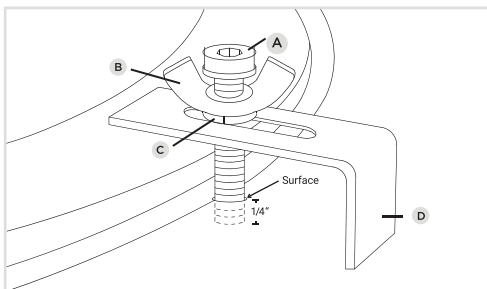
### STEP 3 - FLIP & SET IN PLACE

Carefully flip the sink basin over and place it so the guide lines match up in both locations.



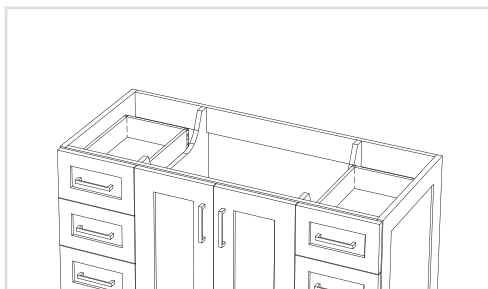
### STEP 4 - DRY & SET

Press down on the sink basin to seal the silicone. Remove any excess. Follow dry time recommendation found on your product, typically 12 to 24 hours.



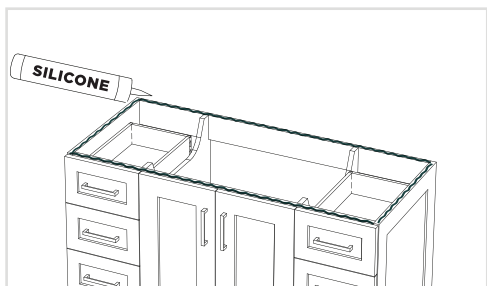
### STEP 5 - ATTACH UNDERMOUNT CLIPS

Please tighten Bolt (A) into wing nut (B) slide on washer (C) and guide through Under-mount clip (D) opening into threaded bolt hole in the countertop. ONLY-Hand Tighten Bolt (A) to a depth of about 1/4" below countertop surface. Then secure the Sink with the under-mount clip (D) by Tightening wing nut (B) only



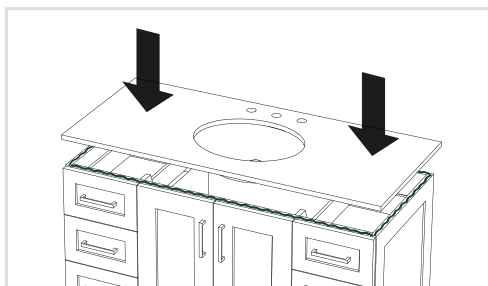
### STEP 6 - ATTACH BASE CABINET TO WALL

Place cabinet in desired location and determine where the wall studs are.



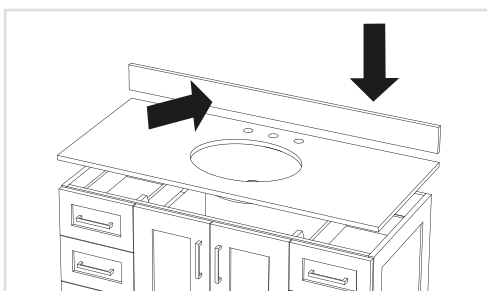
### STEP 7 - PREPARE BASE CABINET

Using a caulking gun, apply silicone around the top of the base cabinet.



### STEP 8 - SET COUNTERTOP IN PLACE

Carefully place the countertop, with the sink attached, onto the cabinet and press down firmly. Wipe away any excess silicone immediately.



### STEP 9 - SET BACKSPLASH

After the vanity is in place, use a caulking gun to apply silicone to the back and bottom unfinished sides of the backsplash. Press firmly down and back to set in place. Remove any excess silicone.