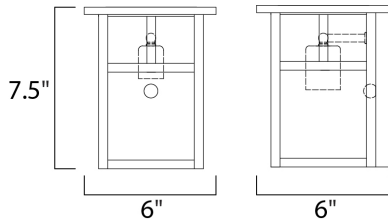


**PRODUCT DESCRIPTION**

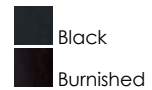
Coldwater is a traditional, craftsman/mission style collection from Maxim Lighting International in Burnished with Honey glass.

**MEASUREMENTS**

DIMENSION : 6" W x 7.5" H x 6" Ext
BACK PLATE : 5.25" W x 6" H x 4" HCO
HANGING WEIGHT : 2.51 lb

LAMPING

INPUT VOLTAGE : 120V
BULB : 1 x 60W Incandescent E26 Medium , 60W Total
BULB INCLUDED : (Not Included)
DIMMABLE : Yes

FINISHES OPTION**GLASS**

Honey HO

MATERIAL

Aluminum, Glass

RATINGS

cETLus
Wet Location

**ADDITIONAL**

OPERATING TEMPERATURE:
-20°C (-4°F), 40°C (104°F)

Always consult a qualified electrician before installing any lighting product.



WESTERN DISTRIBUTION CENTER (HEADQUARTER)
253 NORTH VINELAND AVE | CITY OF INDUSTRY, CA 91746

EASTERN DISTRIBUTION CENTER
4200 SHIRLEY DR. | ATLANTA, GA 30336

P. 626.956.4200 | F. 626.956.4225 | maximlighting.com