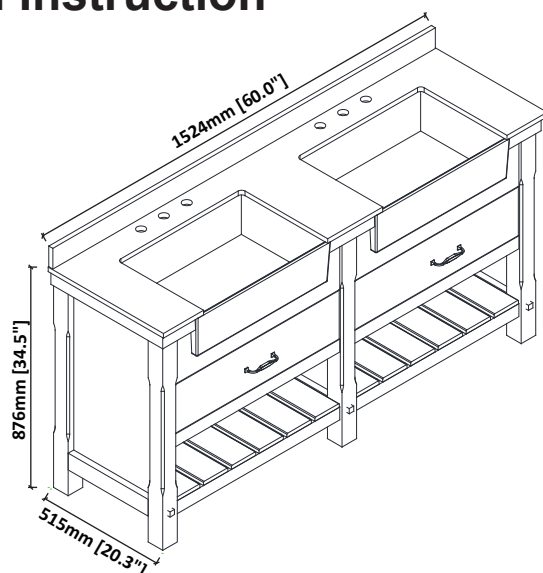
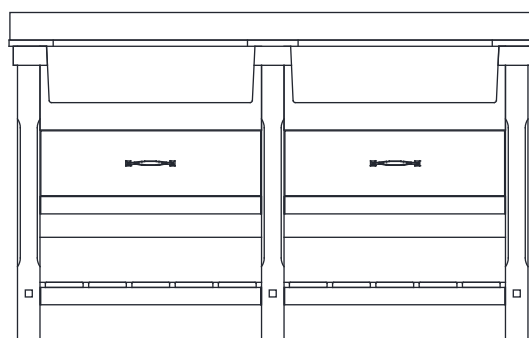
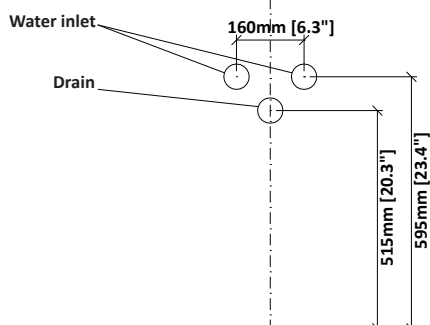
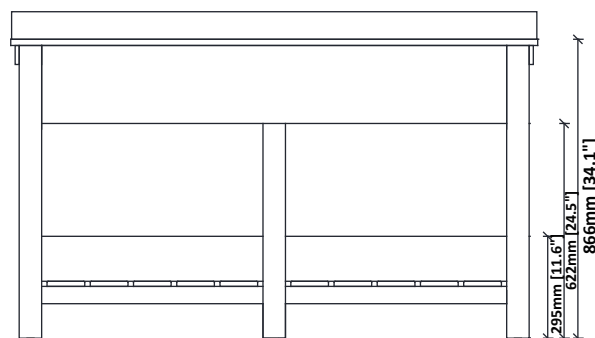
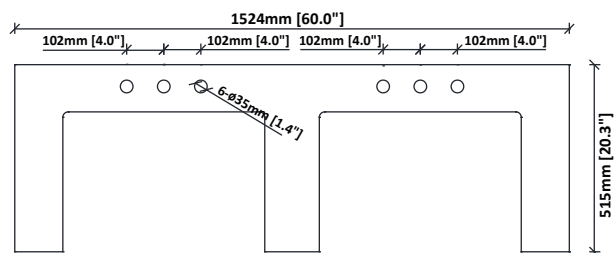


# Mina 60 Cabinet Installation Instruction



## DIMENSIONS



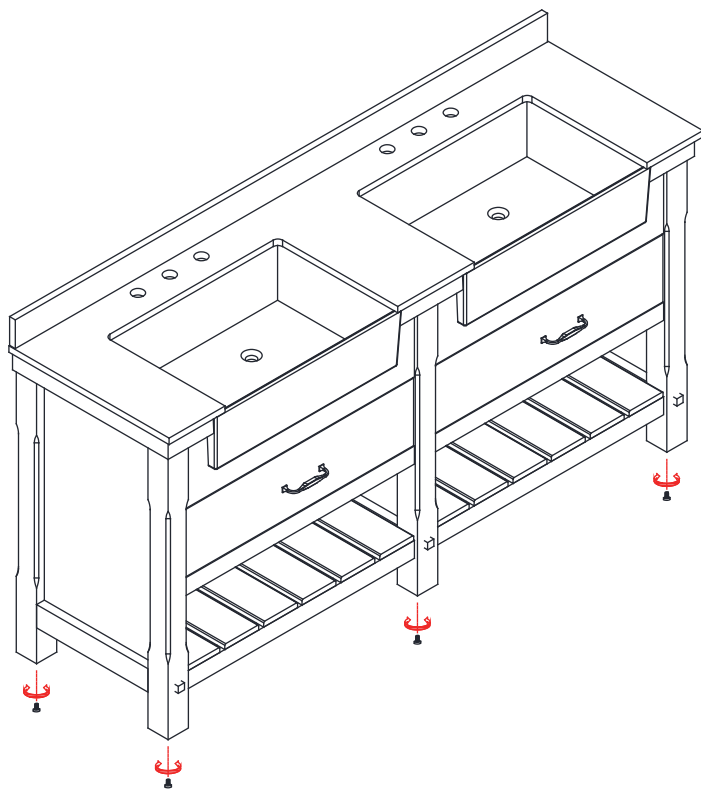
### **WARNING !**

*In the hole on the wall, please be sure to be careful to avoid the internal cables and pipelines.*

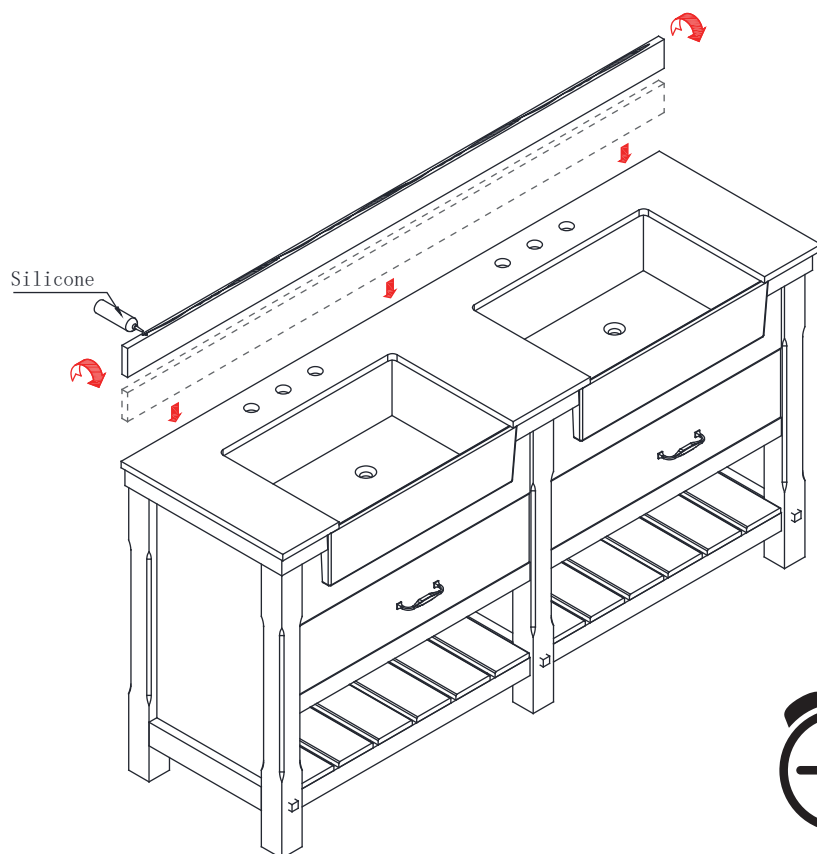
## MATERIALS & TOOLS

*Safety glasses, Pencil, Level, Tape measure, Stud Finder, Assorted screwdrivers, Assorted Wrenches, Drill, Screw gun, Caulking gun, Hammer, Screws, Nail anchors/Molly screws.*

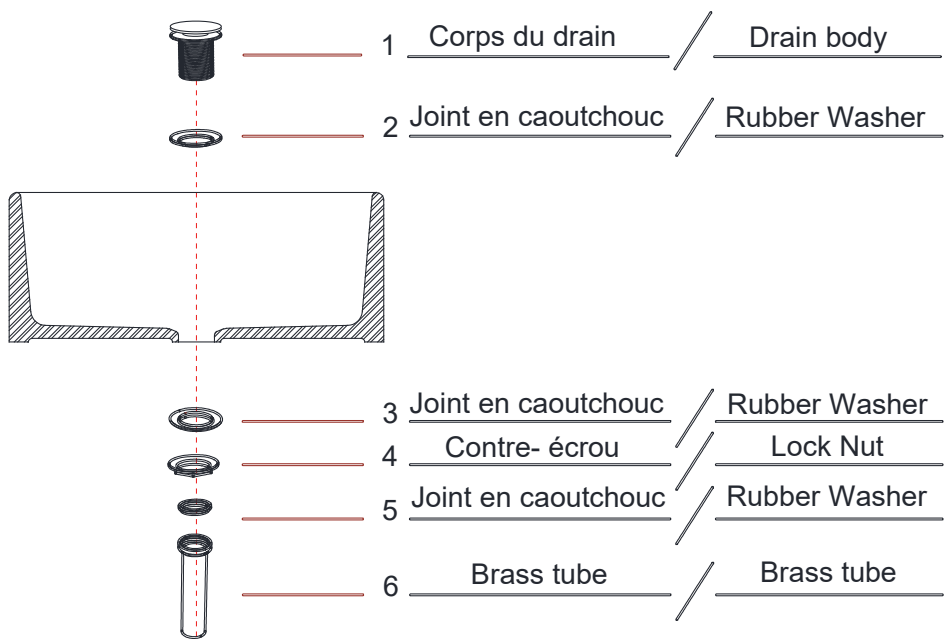
- If the floor is uneven, the adjustable feet levelers can be rotated to raise the vanity to the desired height.



- Backsplash installation instruction, Apply Silicone evenly to the rough side of the backsplash, Flip it over and bond it to the marble countertop, And wait 12 hours.



► Recommend Drain installation instruction (Drainage parts are not included in this package)



**WARNING !**

*In the hole on the wall, please be sure to be careful to avoid the internal cables and pipelines.*