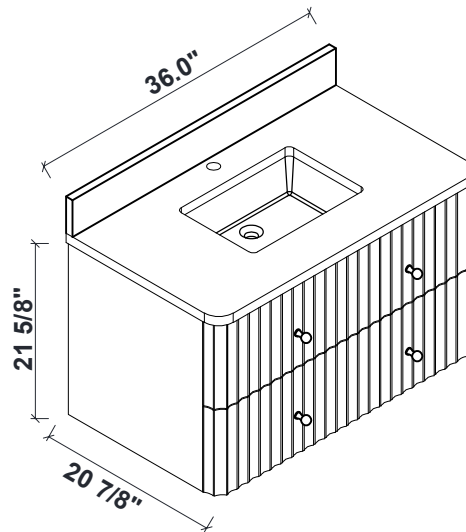
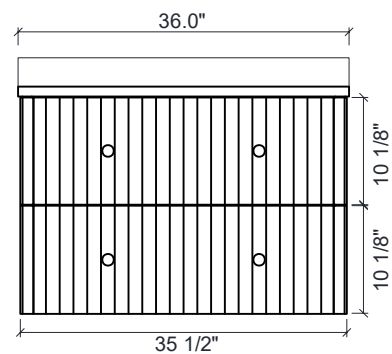
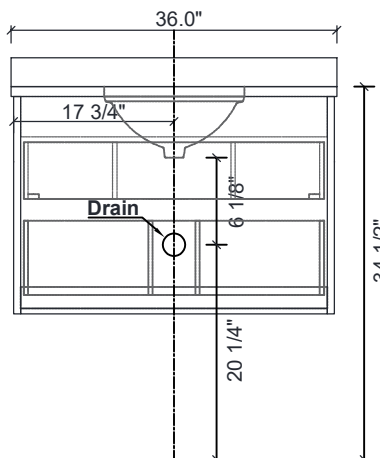
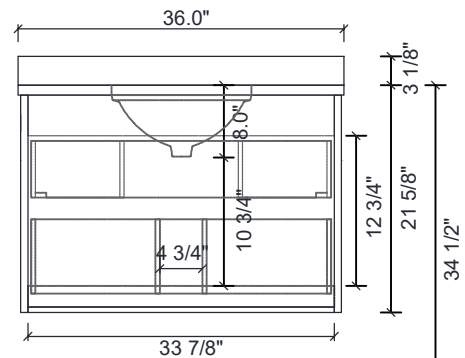
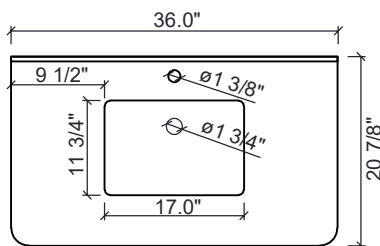




# La Jolla 36 Floating Vanity Installation Instruction



## DIMENSIONS



### **WARNING !**

*In the hole on the wall, please be sure to be careful to avoid the internal cables and pipelines.*






## MATERIALS & TOOLS

*Safety glasses, Pencil, Level, Tape measure, Stud Finder, Assorted screwdrivers, Assorted Wrenches, Drill, Screw gun, Caulking gun, Hammer, Screws, Nail anchors/Molly screws.*

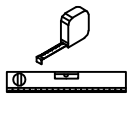


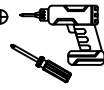
Vanity Installation

Step 1

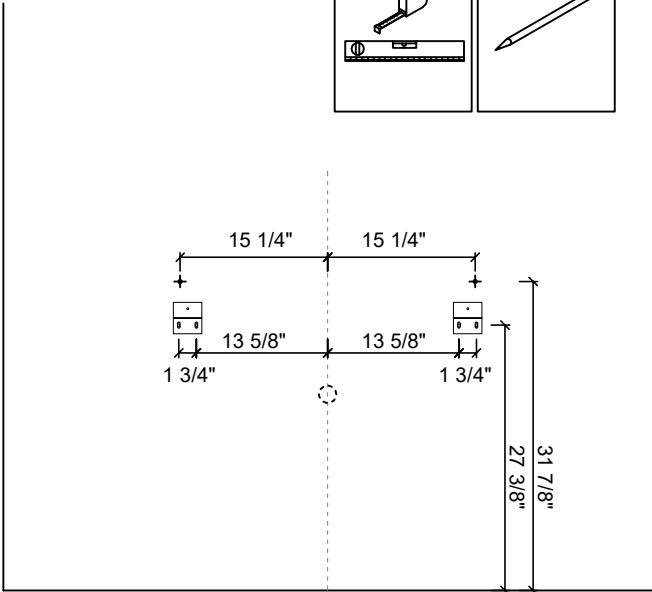
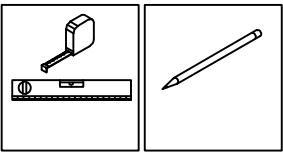
PARTS

 A x2	 6*45 B x6	 C x2	 D x6
 3.5*15 E x2			




TOOLS REQUIRED

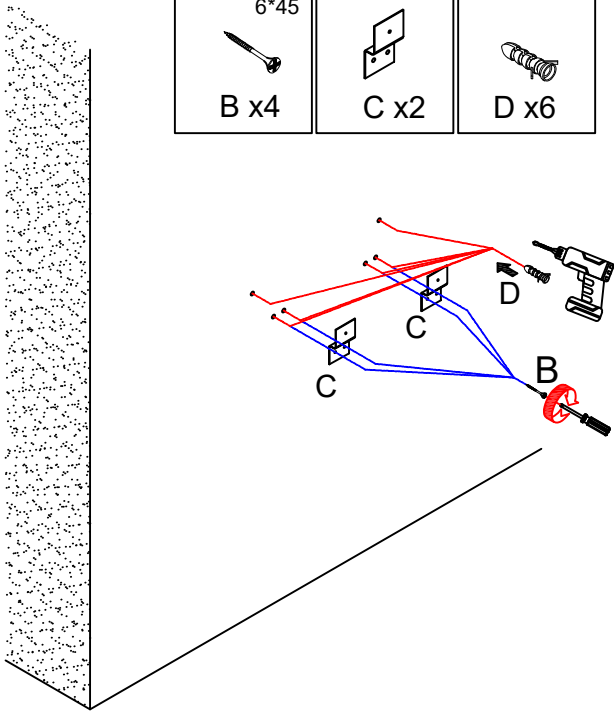
			
---	---	---	---

Step 2

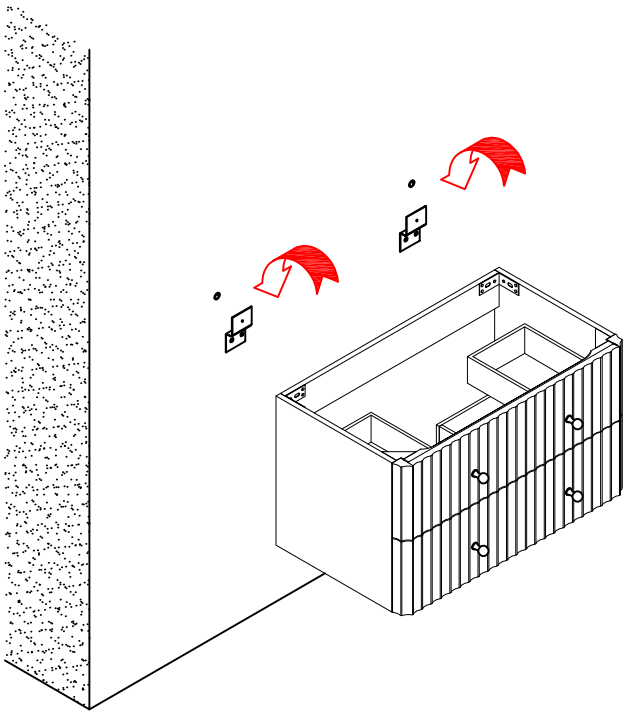


Step 3

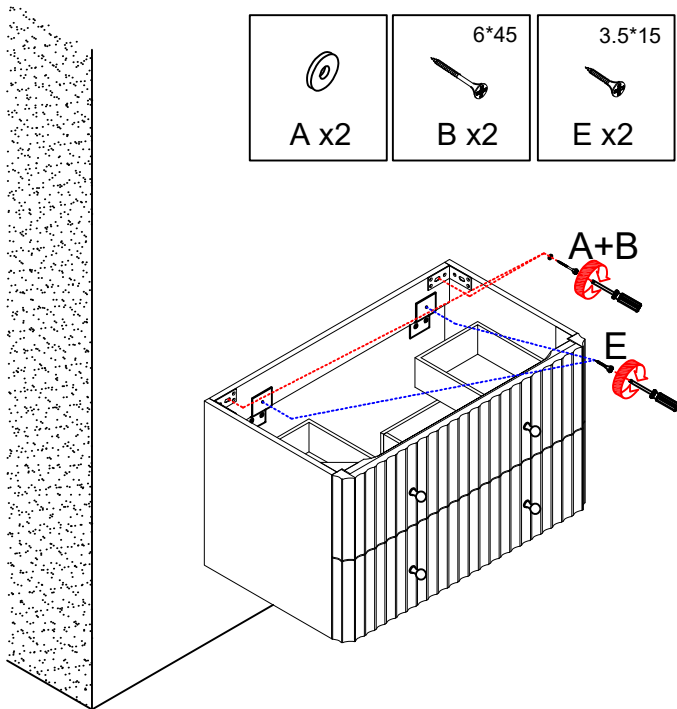
 6*45 B x4	 C x2	 D x6
---	---	---



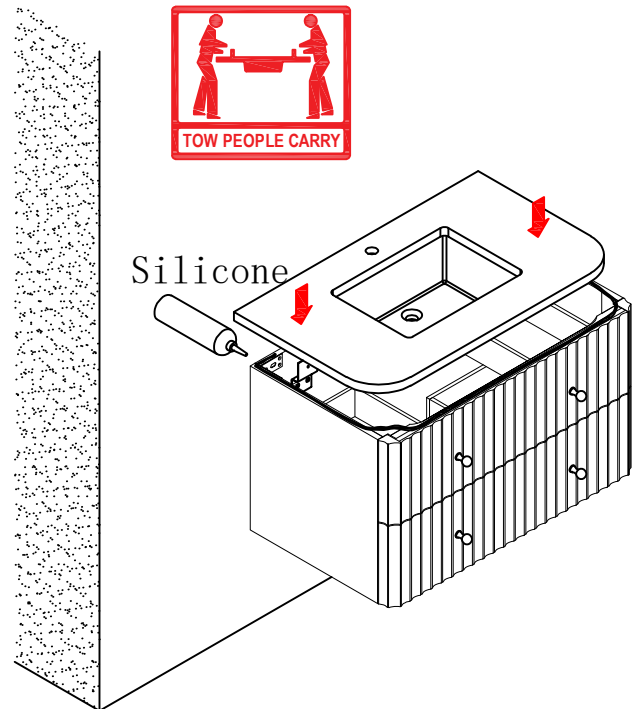
Step 4



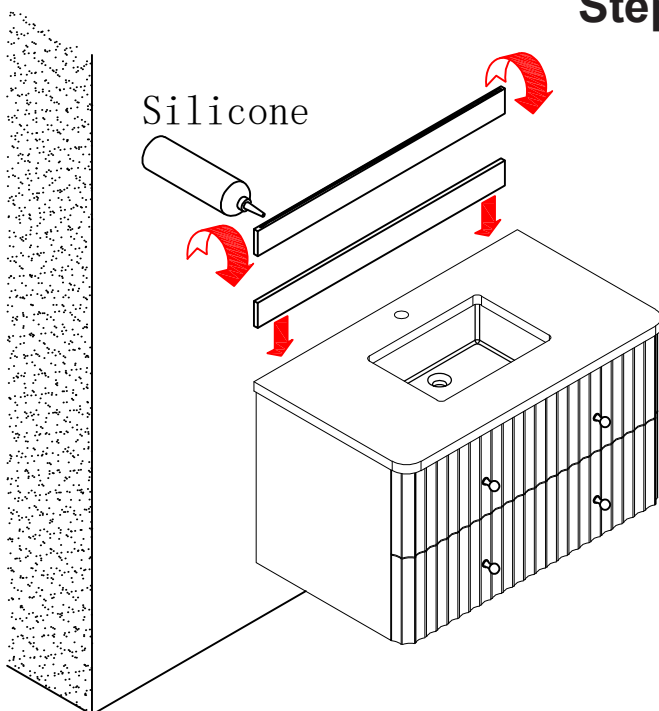
## Step 5



## Step 6



## Step 7



## Step 8

