



**Rely®**  
60"x32" Shower Base  
**K-8458**



**Features**

- Low-threshold design for easy entry and exit.
- Molded-in textured floor.
- Water containment bead incorporated into the threshold design provides an optimum barrier, eliminating water escaping from the shower space.
- Single threshold for alcove installation.
- Durable acrylic construction.
- Right-hand drain.
- Coordinates with Choreograph shower walls and other Kohler collections.

**Recommended Products/Accessories**

K-9132 Shower Drain



**Codes/Standards**

CSA B45.5/IAPMO Z124

ASTM E162

ASTM E662







Greenguard UL 2818 - Gold

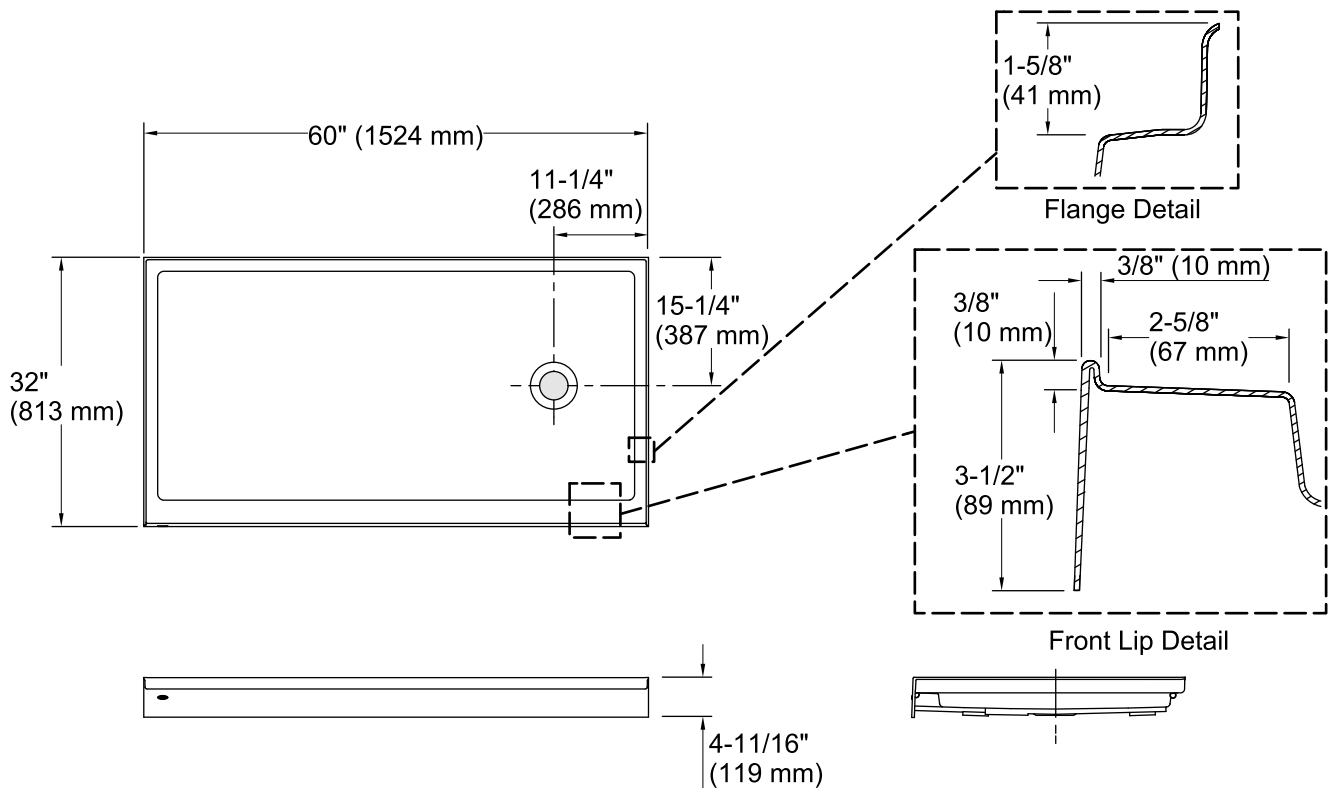
**KOHLER® Plastic Baths and Receptors  
Lifetime Limited Warranty**

See website for detailed warranty information.

**Available Colors/Finishes**

*Color tiles intended for reference only.*

| Color  | Code | Description |
|--|------|-------------|
|  | 0    | White       |
|  | 96   | Biscuit     |
|  | 47   | Almond      |
|  | NY   | Dune        |
|  | 95   | Ice™ Grey   |
|  | G9   | Sandbar     |



## Technical Information

All product dimensions are nominal.

Installation: Three-wall alcove

Drain location: Right

Weight: 62 lbs (28.1 kg)

## Notes

Measure your actual product for rough-in details.

Install this product according to the installation instructions.

Subfloor must be within 1/2" (13 mm) of level.

This receptor has a front lip. This should be taken into account when installing a shower door.