

# OXFORD GARDEN® EILAND Stacking Armchair

EDCHT112

## FEATURES

- Lightweight yet sturdy, even in windy conditions
- Open weave of composite cord creates visual interest and a comfortable seat
- Arrives fully assembled
- Optional seat pad has quick-dry construction with a waterproof bag encasing the foam core and a vented bottom to allow for drainage
- Stackable for convenient storage
- Bumpers on the seat bottom and legs prevent scratching while stacked
- Leg end caps provide protection from marring and scratching of surfaces
- Available only in packs of TWO or FOUR
- Mix and Match with Nette, Koral, and Salino Collections
- Pair with Eiland dining tables
- Low-maintenance and ideal for outdoor applications

## MATERIALS

Powder-coated aluminum is durable and lightweight. Its rustproof nature ensures furniture will remain beautiful over its lifetime. Durable and easy to maintain, composite cord is PVC coated polyester thread woven into a cord that is ideally suited for the outdoor environment.

## CONSTRUCTION

Welded aluminum

## HARDWARE

N/A

## SHIPPING

Ships via small parcel

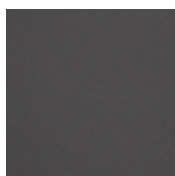
## ASSEMBLY

No assembly required

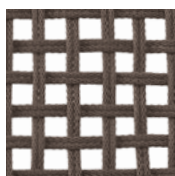
Seat Height	Assemb. Width	Assemb. Depth	Assemb. Height	Assemb. Weight Lbs.
17.75"	23"	24"	33.5"	8
Carton # of Boxes	Carton Width	Carton Depth	Carton Height	Carton Weight Lbs.
1	24"	25"	39"	② 23
1	24"	30"	42"	④ 42

② ④ Indicates weight for packs of TWO or FOUR.

## FRAME



CARBON  
POWDER COATED  
ALUMINUM C



MOCHA  
COMPOSITE  
CORD T112

## QUICK SHIP CHAIR PAD FABRIC



PEPPER  
SOLUTION-DYED  
OLEFIN PR



Chair pads also available in custom fabric or Customer's Own Material. Pricing, minimum order quantities, and lead times will vary; please call for more information.

For Quick Ship or Extended Lead Time SKU status, please call 877-866-3331 or email [sales@oxfordgarden.com](mailto:sales@oxfordgarden.com).