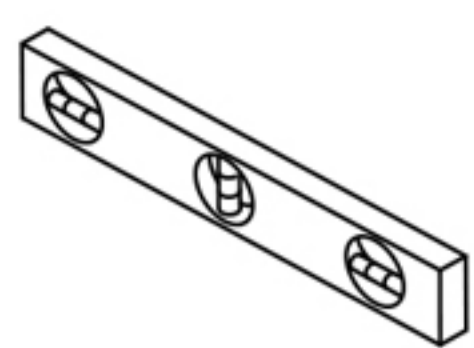


Freestanding Tub Filler Faucet Installation

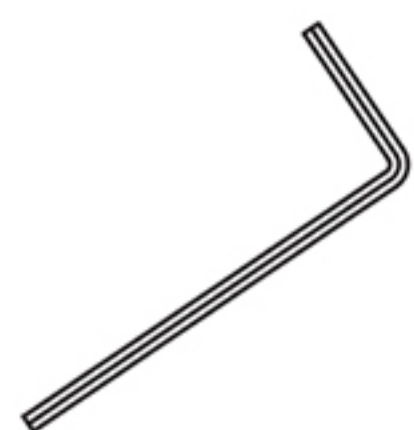
INSTALLATION MANUAL Tools You Will Need:



Electric Drill



Level



Hex Wrench



Sealant Tape



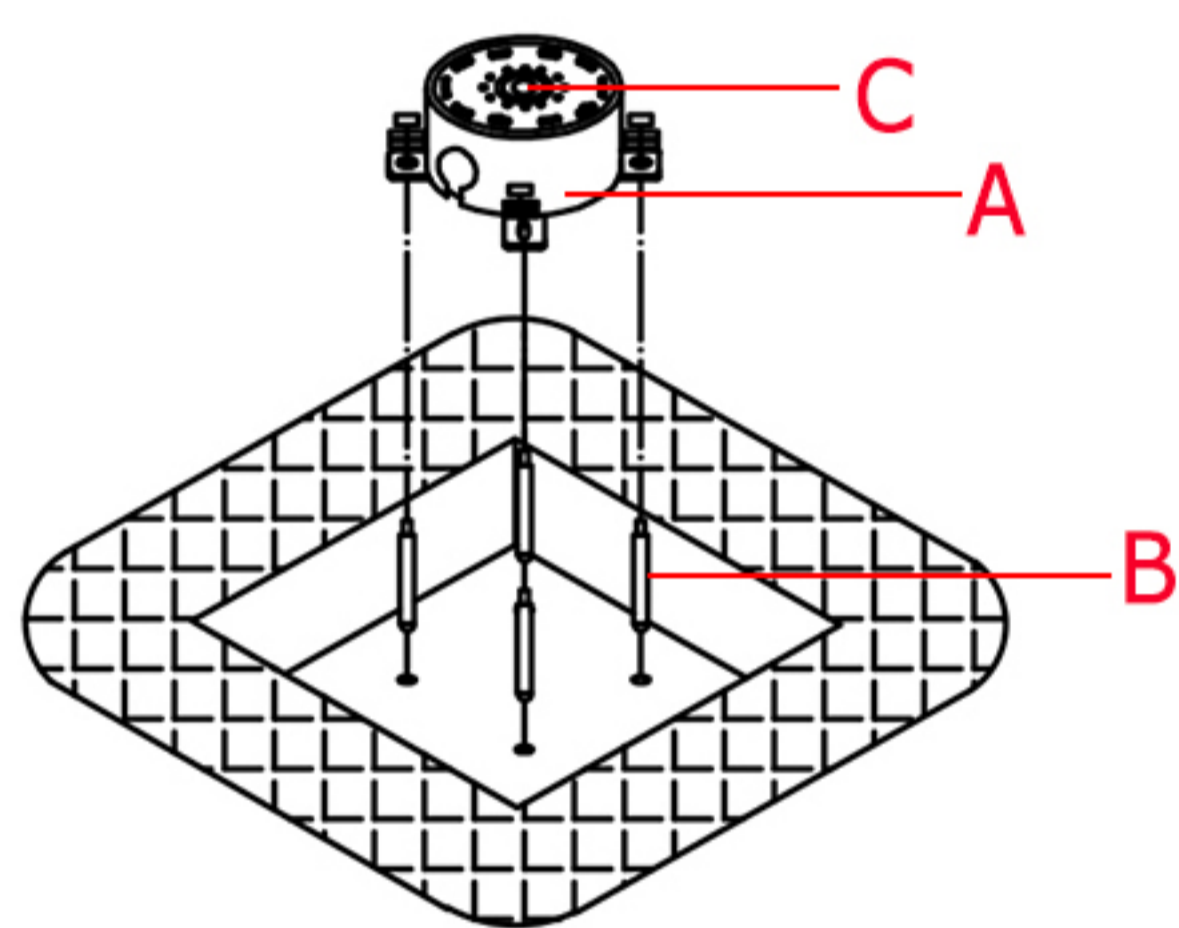
Adjustable Wrench

Before the Installation

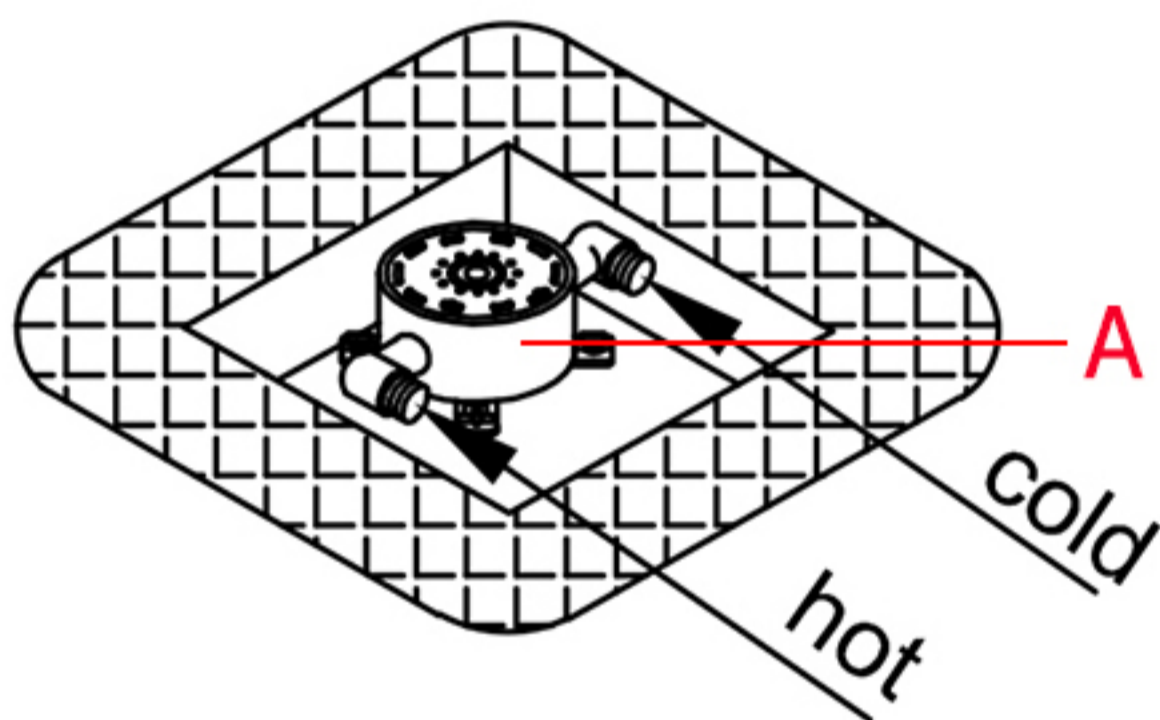
1. Check the package and confirm all parts are included. If any part is missing or damaged, please contact us.
2. Do not disassemble the main body, as it has been installed & commissioned correctly & precisely before leaving the factory.
3. Shut off the main water supply prior to beginning installation.
4. Do flush the water supply lines to remove any dirt and debris before installation (**IMPORTANT**).
5. Make sure to connect the hot/cold inlet pipe correctly. If standing in front, connect hot water pipe to the left and cold water pipe to the right.
6. After the installation, check for leaks and make sure every joint is safely sealed.

Cleaning and Maintenance

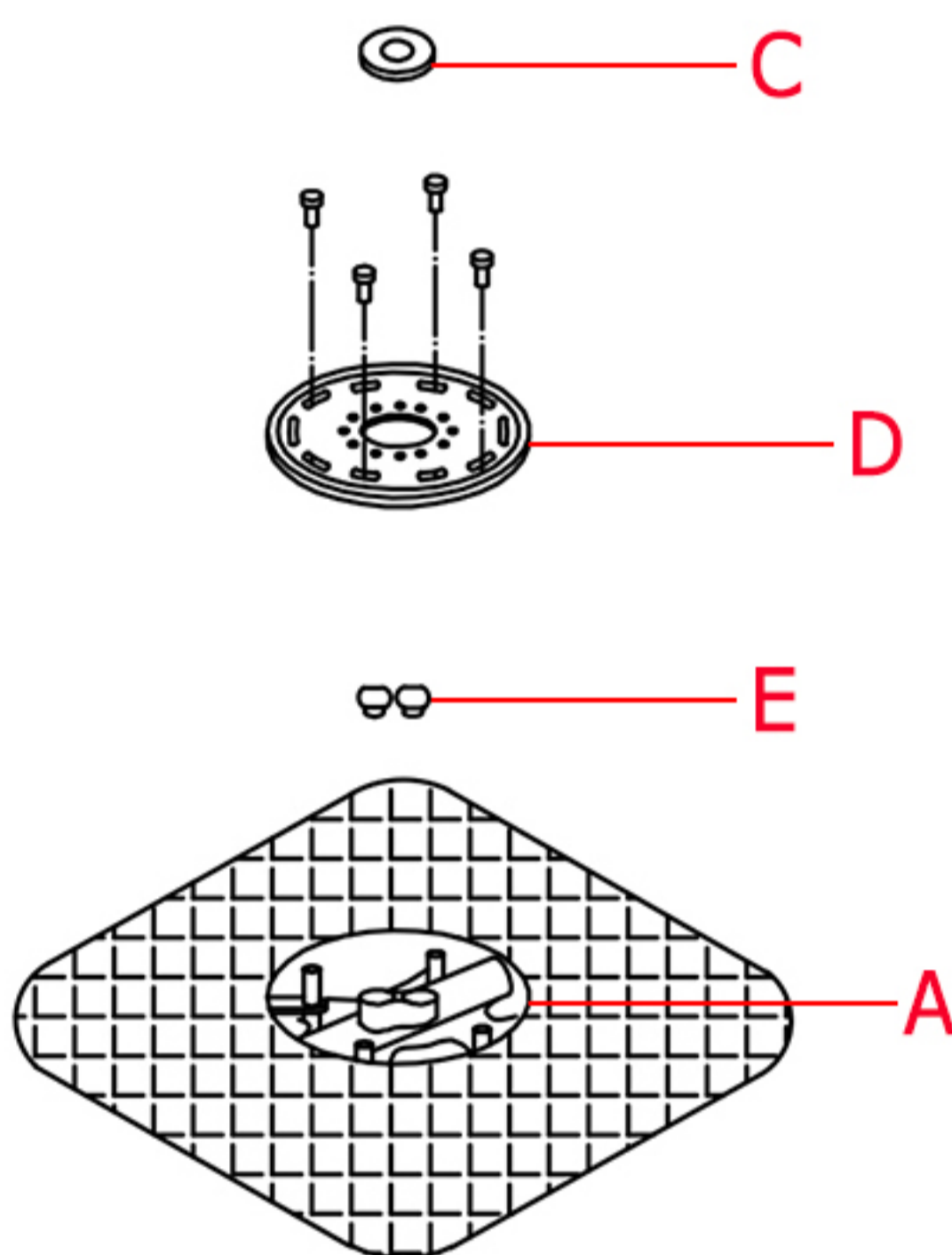
1. Rinse with clean water and dry with a soft cloth.
2. Do not use any detergent, acid, polisher, abrasives, or harsh cleaners.
3. Do not use cloth with a coarse surface.



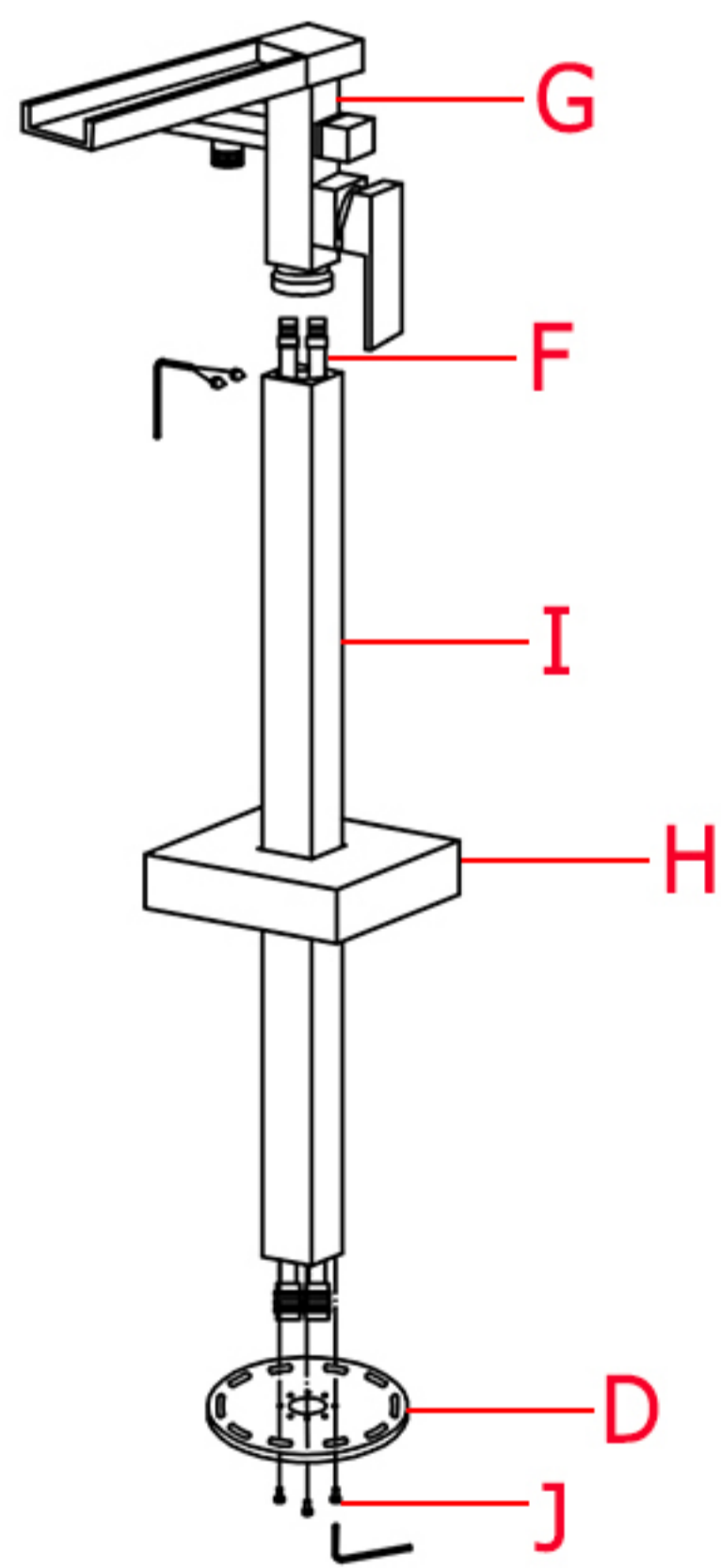
1. Dig a hole (Depth≤50mm) under the subfloor. Verify correct spout orientation before install the rough-in box (A). Then mark the position and drill holes to suit the expansion screws (B). Install the box with washers and nuts. (**IMPORTANT:** Use the air bubble level (C) to ensure the box is level.)



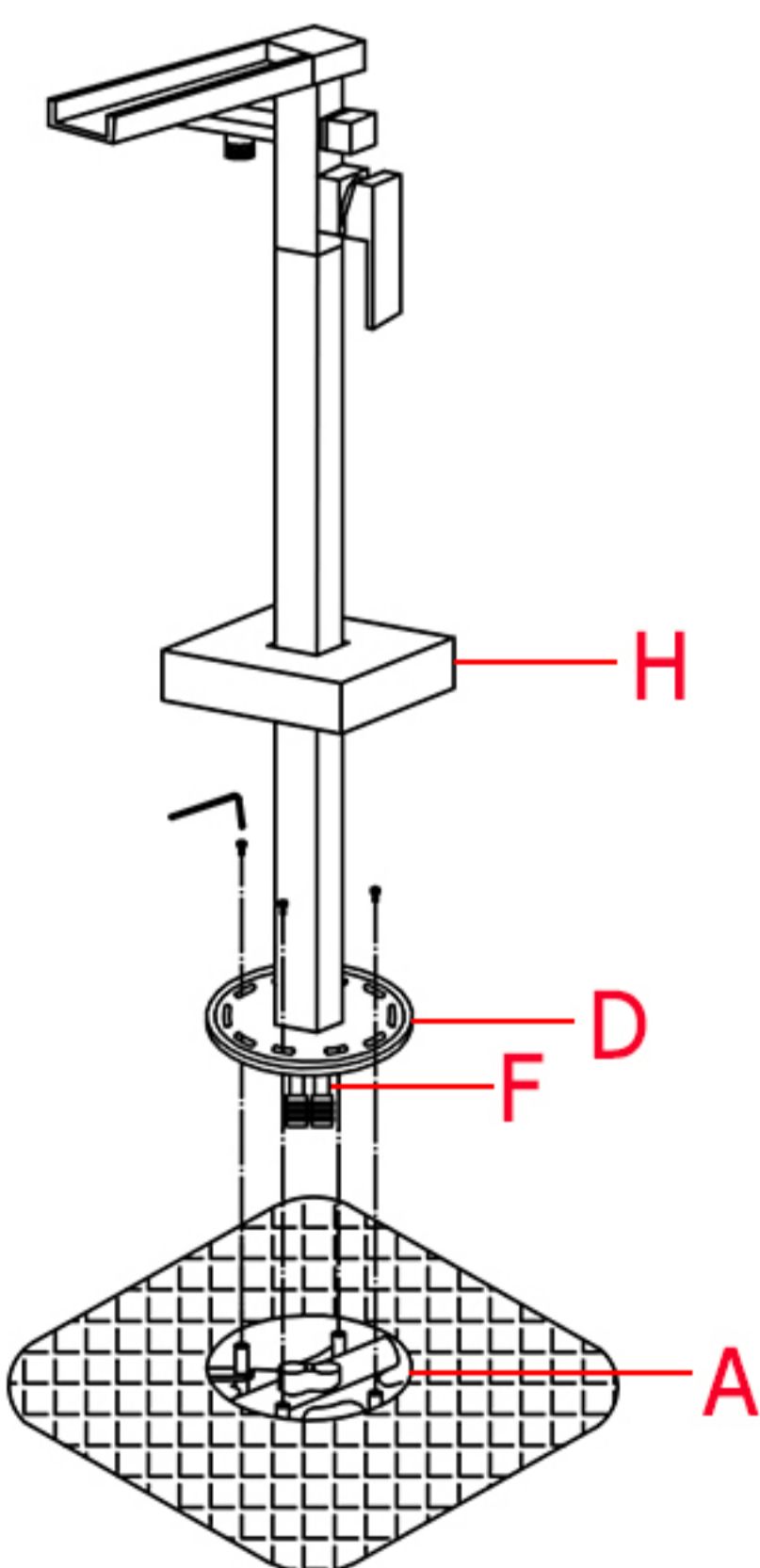
2. Connect the hot and cold supply lines to the rough-in box (A).(Apply sealant tape to prevent leakage.) Turn on the water supply and check for leaks. Then turn off the water supply.



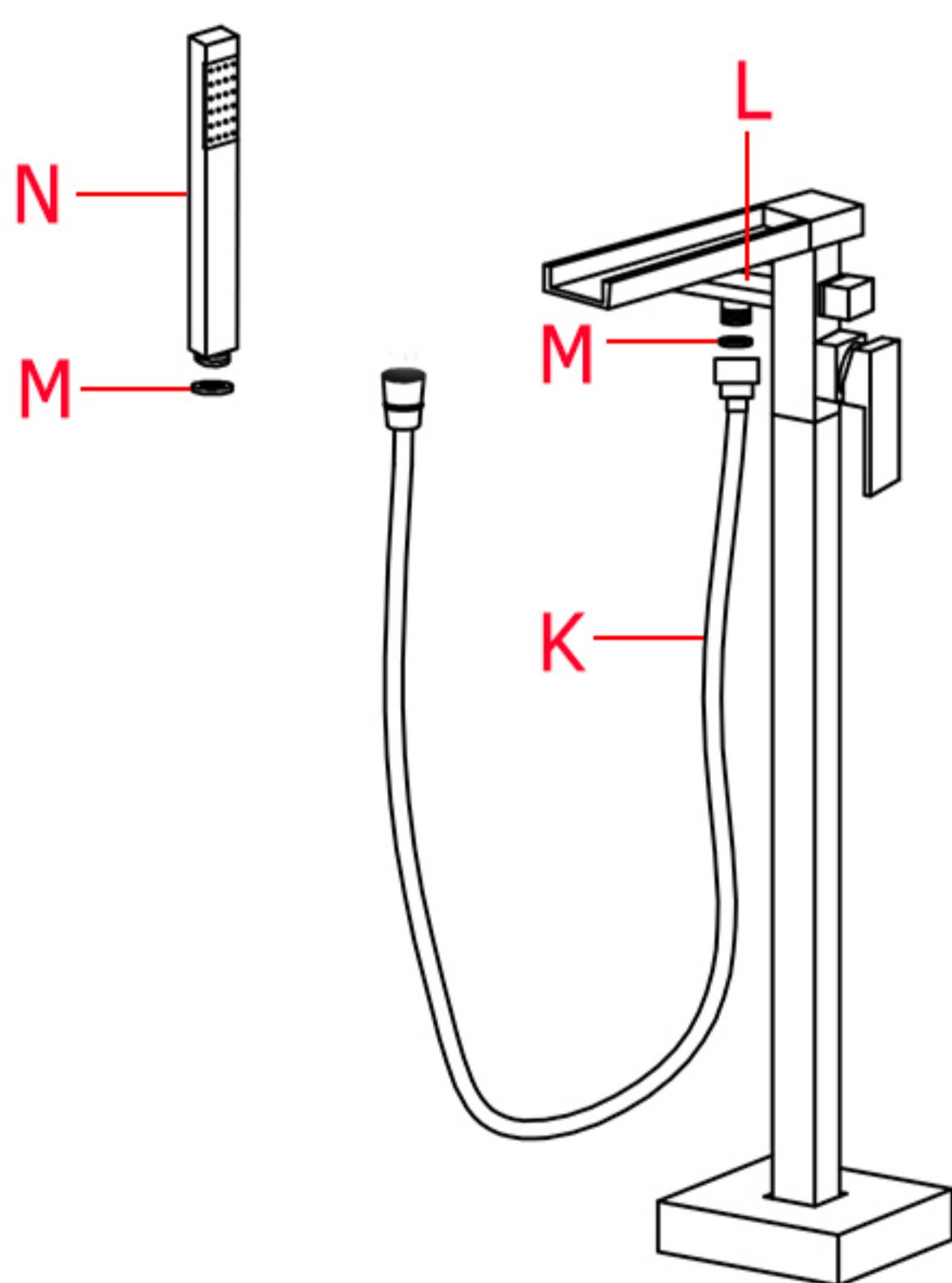
3. Finish the floor around the rough-in box (A). Remove the air bubble level (C), mounting plate (D), and plugs (E) from the rough-in box (A).



4. Screw water pipes (F) into the corresponding screw-hole of the faucet body (G) through the stand pole (I). Slide the escutcheon (H) over the stand pole (I). Install the mounting plate (D) onto the bottom of the stand pole (I) with screws (J). Then install the stand pole (I) to the faucet body (G) with set screws.



5. Insert the water pipes (F) into the corresponding outlets of the rough-in box (A). Use a hex wrench to install back the mounting plate (D) onto the rough-in box (A). Slide the escutcheon (H) down onto the floor to cover the rough-in box (A).



6. Turn on the water supply and let water run for at least 1 minute to clear any debris. Connect hose (K) to the handshower holder (L) and to the handshower (N) and make sure rubber washers (M) is added to both ends. Then, place the handshower (N) into the handshower holder (L).