

KITCHEN FAUCET
installation instructuion



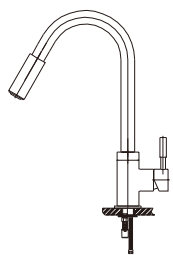
KITCHEN FAUCET
installation instructuion

KITCHEN FAUCET
installation instructuion

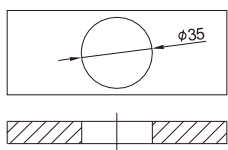


KITCHEN FAUCET
installation instructuion

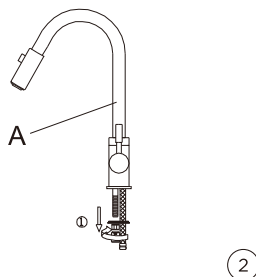
Kitchen faucet installation instruction



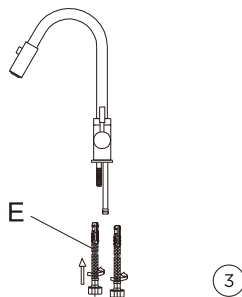
NO	Component	Picture	PCS
A	Faucet		1
B	Shot		1
C	Fastening nut 1#		1
D	U-shaped fixing unit		1
E	Water adjustment hose		2
F	Fastening nut 2#		1



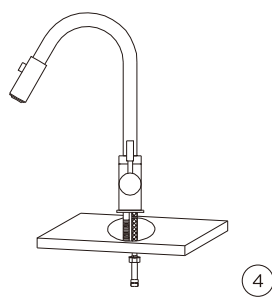
①



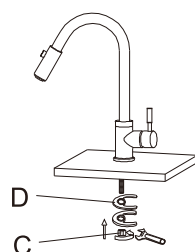
②



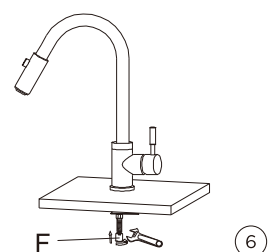
③



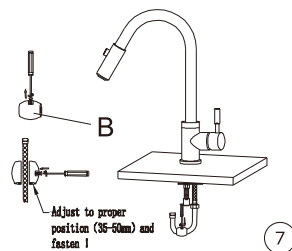
④



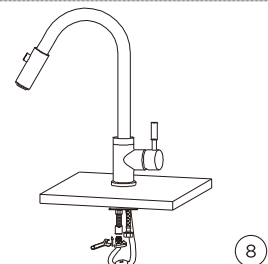
⑤



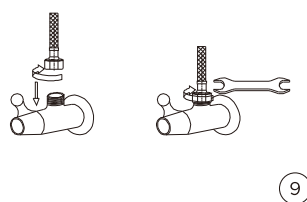
⑥



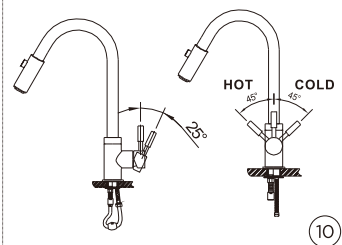
⑦



⑧



⑨

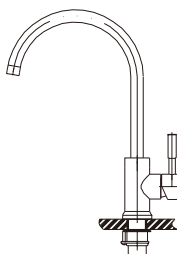


⑩

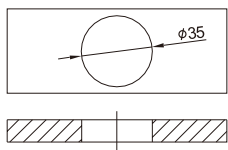
Notice:

Please removing all of the sand ,silt and other things from the water hose before assembling, to avoid blocking the faucet and effecting water rate. Please use the special tools to disassemble it and wash with pneumatic equipment,if the faucet blocked.

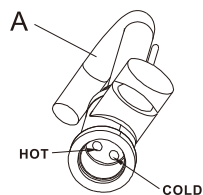
Kitchen faucet installation instruction



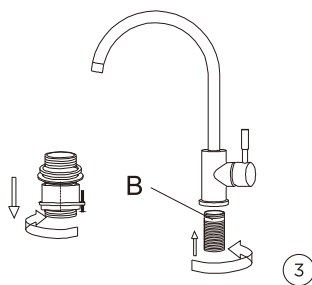
NO	Component	Picture	PCS
A	Faucet		1
B	Hollow screw		1
C	Rubber washer		1
D	Iron washer		1
E	Water adjustment hose		2
F	External nut		1



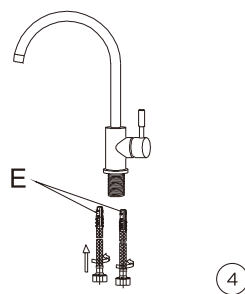
①



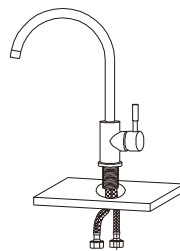
②



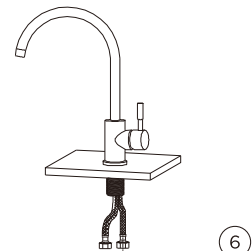
③



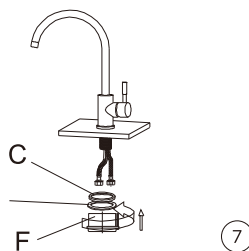
④



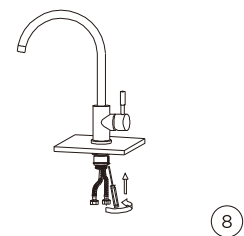
⑤



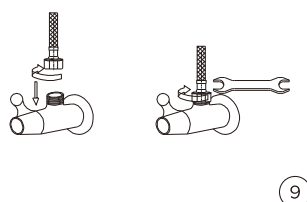
⑥



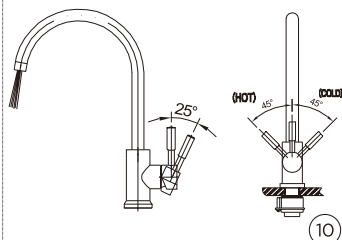
⑦



⑧



⑨



⑩

Notice:

Please removing all of the sand ,silt and other things from the water hose before assembling, to avoid blocking the faucet and effecting water rate. Please use the special tools to disassemble it and wash with pneumatic equipment,if the faucet blocked.