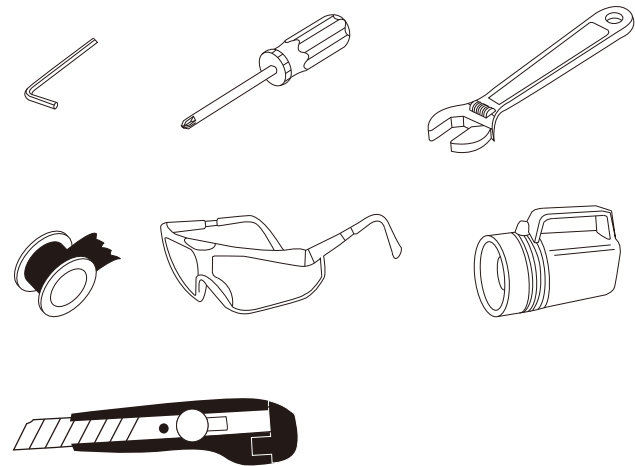
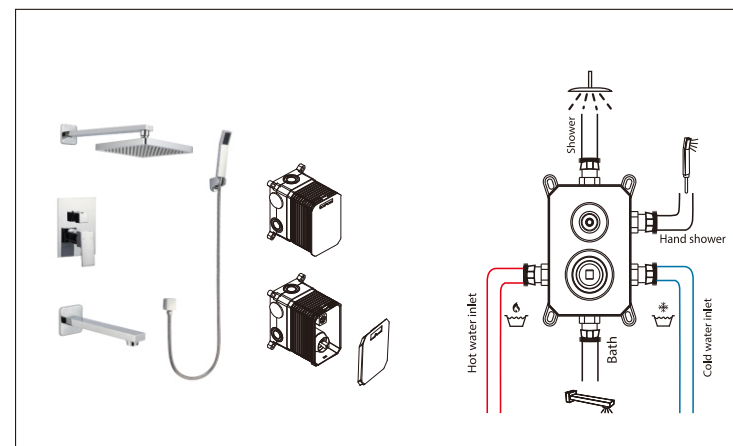


## YOU MAYBE NEED:

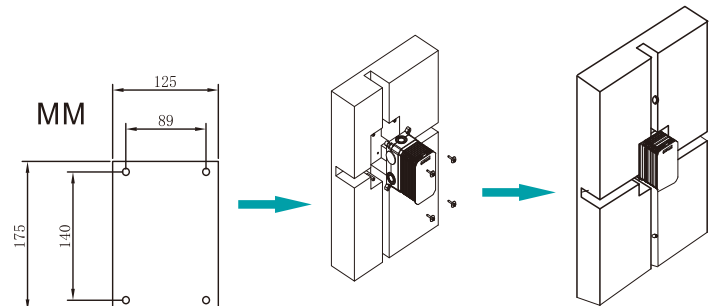


Firstly, thanks for purchasing our products.  
This instruction manual lists Shower Set for reference.  
There is corresponding to installation manual for your purchased products.

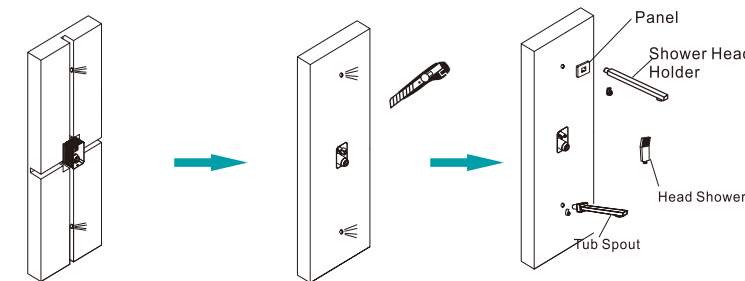
## TYPE ONE:



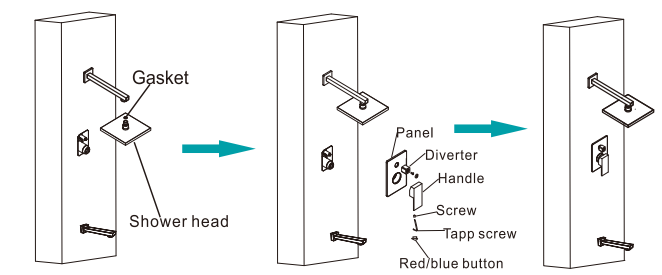
## Step:



1. Dig a hole (60mm depth) and 4 mini holes, size according to upon pic show. Knock 4pcs screws into mini holes.
2. Put faucet-body in embedded box hole and fix it.
3. Insert water pipe into wall port with sealing tape.

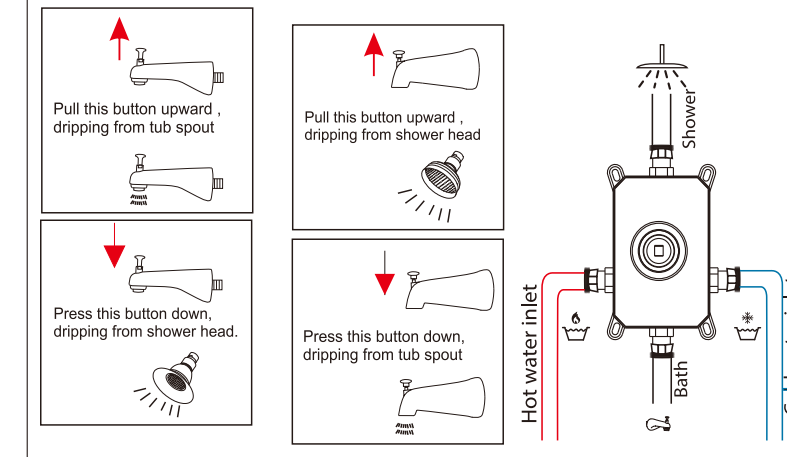


4. Open water supply switch & shower handle, ensure no water seepage from sealing tape, and then rush the inner dregs.
5. Cut the part of embedded box which is out of wall.
6. Install the shower head holder, tub spout and hand shower.

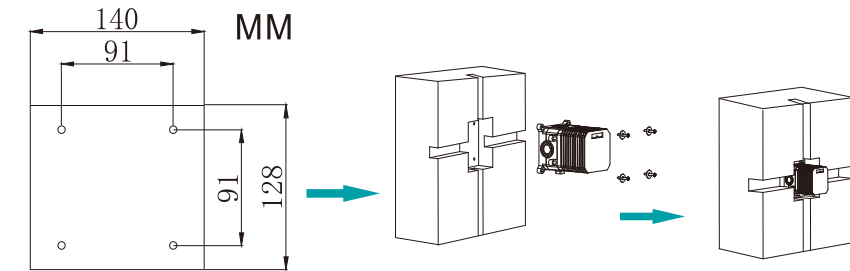


7. Install the shower head.
8. Install the panel and handle, then put on red/blue button (red on the left, blue on the right)
9. Everything is OK.

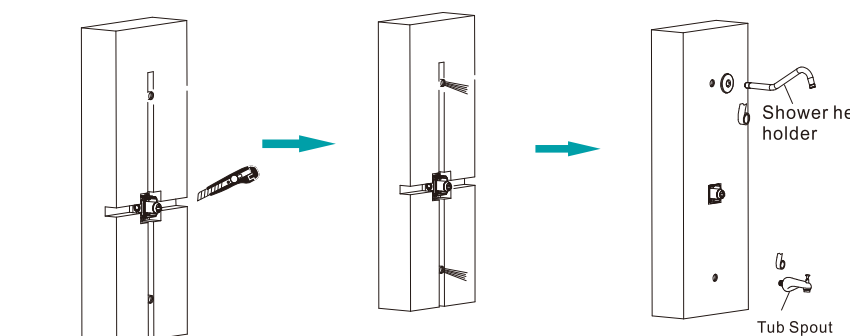
## TYPE TWO:



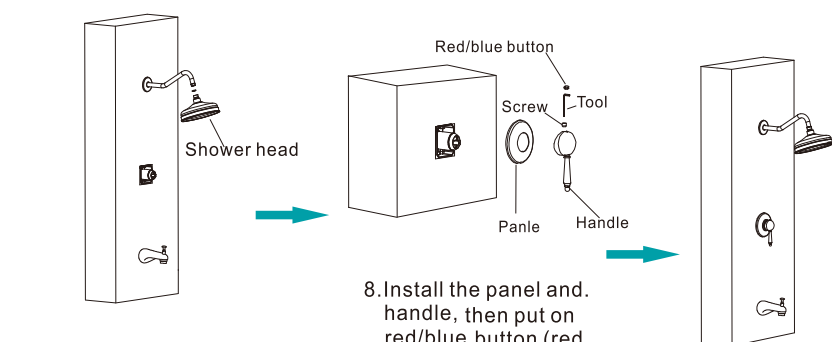
## Step:



1. Dig a hole (60mm depth) and 4 mini holes, size according to pon pic show. Knock 4pcs screws into mini holes.
2. Put faucet-body in embedded box hole and fix it.
3. Insert water pipe into wall port with sealing tape.

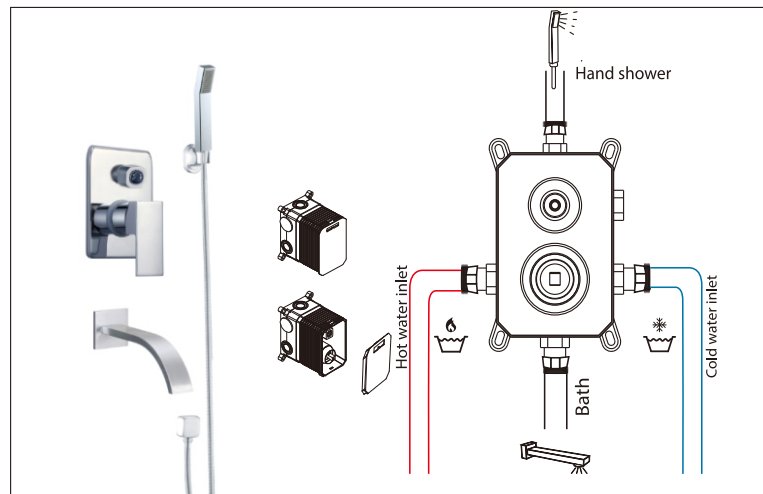
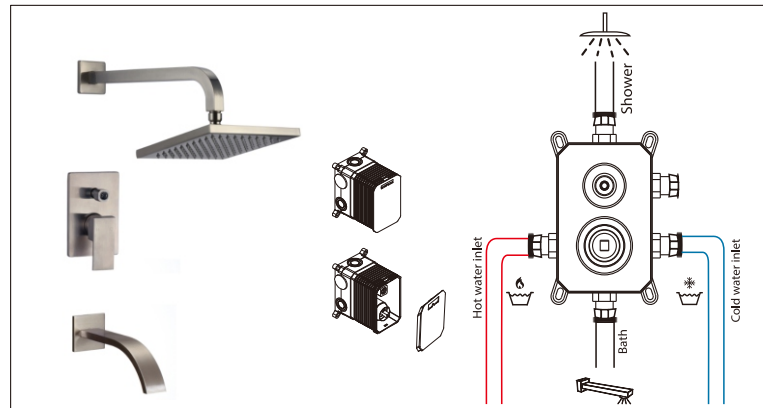
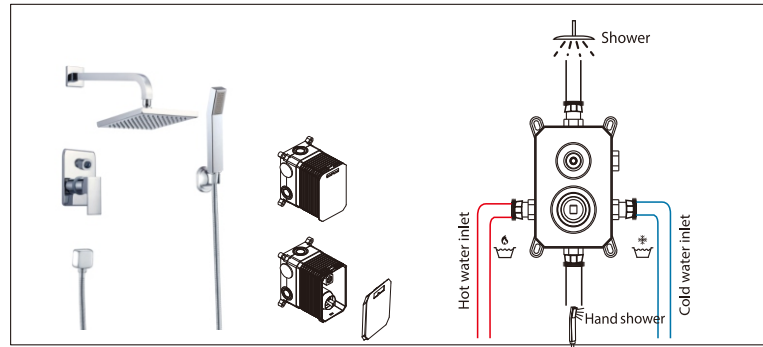


4. Cut the part of embedded box which is out of wall.
5. Open water supply switch & shower handle and then rush the inner dregs.
6. Install the shower head holder and tub spout into the water inlet inside the wall by using sealing tape.

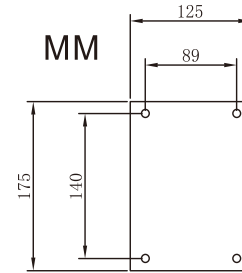


7. Install the shower head.
8. Install the panel and handle, then put on red/blue button (red on the left, blue on the right)
9. Everything is OK.

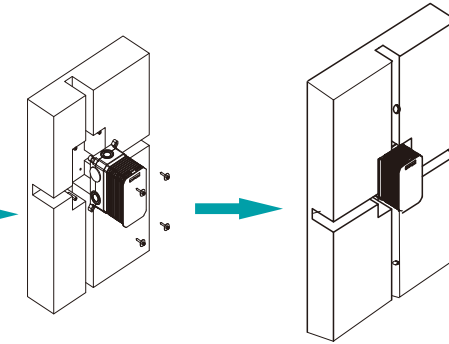
## TYPE THREE:



## Step:

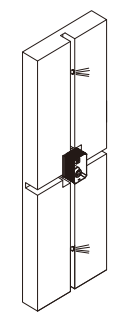


1. Dig a hole (60mm depth) and 4 mini holes, size according to upon pic show. Knock 4pcs screws into mini holes.

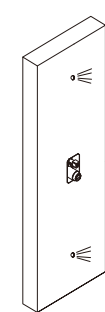


2. Put faucet-body in embedded box hole and fix it.

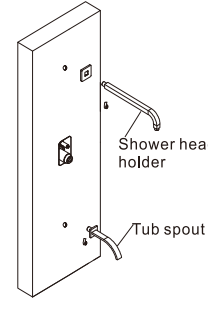
3. Insert water pipe into wall port with sealing tape.



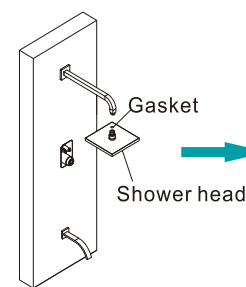
4. Open water supply switch & shower handle, ensure no water seepage from sealing tape, and then rush the inner dregs.



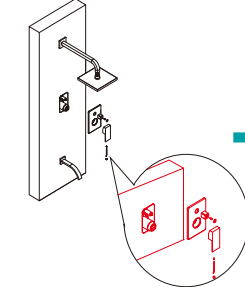
5. Cut the part of embedded box which is out of wall.



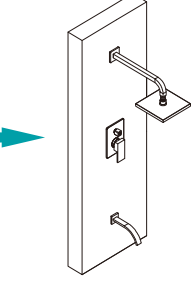
6. Install the shower head holder, tub spout.



7. Install the square shower head.

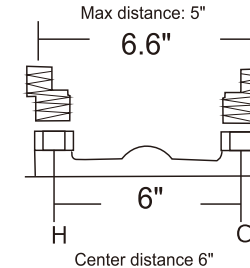
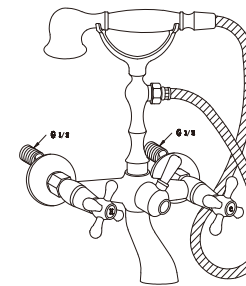
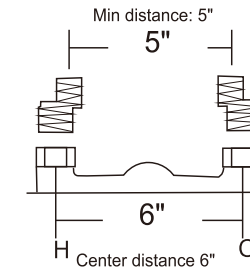
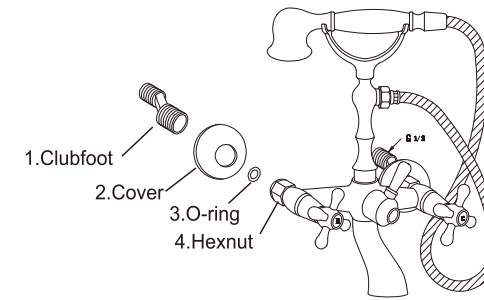


8. Install the panel and handle, then put on red/blue button (red on the left, blue on the right).



8. Everything is OK.

## Installation of in-wall tub shower faucet



Note: Eliminate inner dregs before installation.  
Protect faucet surface with a soft cloth when installing.

1. Wrap one side of 2 clubfeet(1) with sealing tape, screw clubfeet(1) into the hole in a wrench.
2. Run the cover (2) through clubfeet(1).
3. Insert O-ring (3) into hexnut(4), then rotate clubfeet(1) to the right position to hexnuts(4).
4. Wrap another side of 2 clubfeet(1) with sealing tape, tighten hexnuts(4) by wrench.



# SHOWER SET

## Installation Instructions

