

## CENTRAL BRASS COMPANY

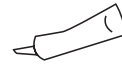
1277 Heil Quaker Blvd.  
La Vergne, TN 37086  
(800) 321-8630  
www.centralbrass.com

# INSTALLATION

## Tools:



Adjustable Wrench



Silicone Sealant



Teflon Tape



Rags



## Model Number: 1177, 1178 Series

### Warnings and Notes:

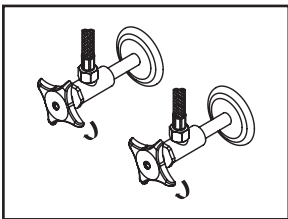
Check with local plumbing code requirements before installation.

This product should be installed by a local listed plumber.

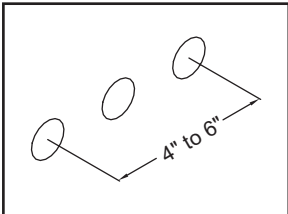
**Do not use plumbers putty on threads.**

### Installation Steps:

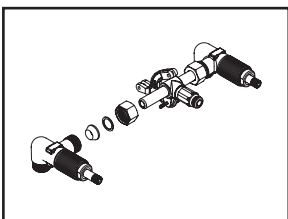
#### Two Handle Wall Mount Faucet



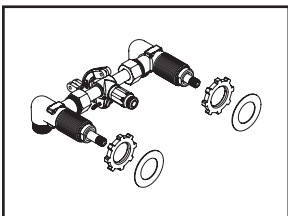
(1) Shut off water supplies. Remove old faucet. Clean mounting surface in preparation for new faucet.



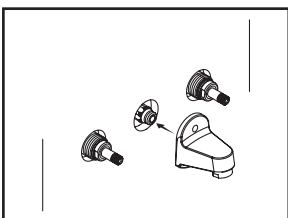
(2) Measure installation distance. This faucet can be installed on center to center distance from 4" to 6". For 4" centers installation cut off 3/8" from each end of center tee



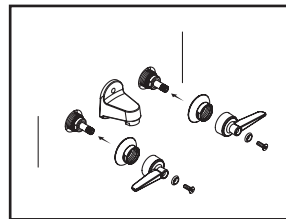
(3) Assemble cold valve body. Place coupling nut, brass washer and rubber cone washer with larger end towards the center tee. Tighten the coupling nut to cold valve body. Install rocker arm to center tee with the help of cotter pin. Install hot valve body same way.



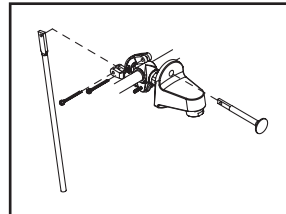
(4) Install locknuts down full length of each valve body. Place gaskets on valve bodies.



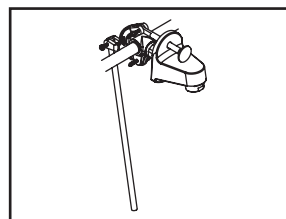
(5) Slide the assembly through mounting holes. Apply plumbers putty to the back of the spout. Thread spout to the center tee. Ensure o-ring does not get nicked.



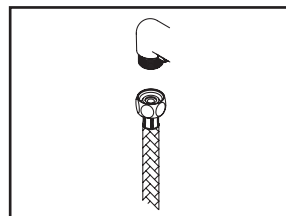
(6) Apply plumbers putty underneath of escutcheons. Thread escutcheons on to the valve bodies. Install handles to the valve bodies with the help of screws. Adjust locknut of both sides from the back of mounting hole to fix the valve bodies on the mounting surface



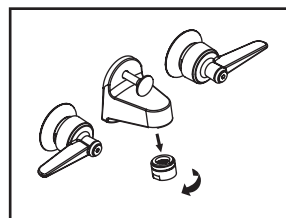
(7) Install Pop-up Rod and lower pull rod to the rocker arm with the help of cotter pins



(8) Check when pop-up rod is pulled the lower pull rod moves properly.

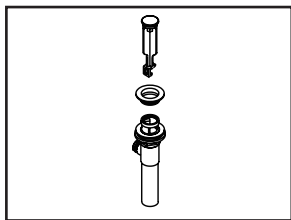


(9) When using stainless steel braided faucet supply hose; this faucet requires one end of the supply hose to have a 1/2" female IPS connection. The other end of this supply hose must match the thread on the water supply valve under your sink. Once you've identified the required size, carefully follow the manufacturer's installation instructions for each hose.

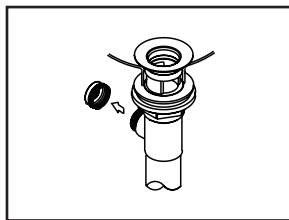


(10) Important: After installation is complete, remove aerator. Turn water supplies on and allow both hot and cold water to run at least one minute each. While water is running, check for leaks. Turn off water and replace aerator.

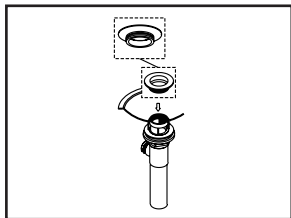
## Pop-up Drain Installation:



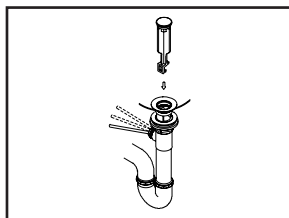
(1) Remove pop-up flange from body



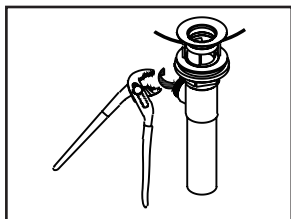
(5) Remove pivot rod nut from pop-up body, ensure the washers is in place, insert pivot rod, tighten pivot rod nut back to pop-up body.



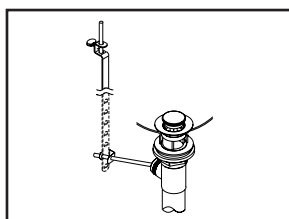
(2) Place a ring of putty on the bottom of flange.



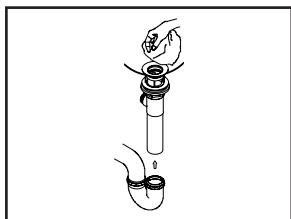
(6) Push pivot rod down, insert drain plug carefully. Test to ensure drain plug works properly.



(3) Insert pop-up flange through drain hole and attach flange to body. Ensure the pop-up outlet faces towards the back of the sink. Tighten the locknut securely with a wrench. Do not overtighten.



(7) Connect lift rod strap to pivot rod by using clip. Tighten the thumbscrew to connect lift rod strap to pop-up lift rod.



(4) Remove the excess putty. Connect the trap (check manufacturer's instructions for installation)

**Central Brass**  
C O M P A N Y

For more care information or trouble shooting inquiries about your Central Brass product, please call:

**Central Brass Company** (800) 321-8630

Monday-Friday 8AM to 8PM EST (5AM to 5PM PST)

[www.centralbrass.com](http://www.centralbrass.com)

# Central Brass Company, Inc. Limited Lifetime Warranty

**Central Brass Company, Inc.** warrants its products to the original consumer purchaser to be free from defects in material and workmanship as long as the consumer purchaser owns it. Dated proof of purchase must accompany all warranty claims. All finishes carry a lifetime warranty in residential and 10 year warranty in commercial plumbing service as long as the consumer purchaser owns it.

If the faucet should ever develop a leak or drip during warranty period, Central Brass Company, Inc. will free of charge provide the parts necessary to put the faucet back in good working condition and will replace any part or finish proven defective under normal installation, use, and service to the original consumer purchaser. Damage as a result of misuse, abuse, accident, or improper installation, will consequently void this warranty. Use of non-genuine Central Brass parts will consequently void this warranty. Replacement parts can be obtained from your local dealer or directly from Central Brass. Central Brass recommends using a certified plumber for all faucet installation and repair.

This warranty is limited to replacement of defective parts only. Incidental and consequential damages, labor charges, repair, or replacement costs are expressly excluded. Some states do not allow the exclusion or limitation in incidental or consequential damages, so the above limitation may not apply to you. This warranty gives you specific legal rights, as you may have other rights which vary from state to state.

Installation or maintenance and cleaning must be in compliance with instructions furnished with every Central Brass product. If you find a problem with your product, please immediately contact your nearest Central Brass Company, Inc. dealer or sales representative.

\*10-year limited warranty on commercial and multi-family projects except for products specified below. Effective for products sold after 07/01/2017

**Sensor Faucets:** - The mechanics of the Central Brass Sensor Faucets are warranted for five (5) years from the date of installation. The electronics and solenoid are warranted for a period of one (1) year from the date of installation.

**Pre-Rinse:-** The mechanics of the Central Brass Pre-rinse Spray valve are warranted for five (5) years from the original date of purchase.

## MAINTENANCE AND CARE INSTRUCTIONS

Use clean water to clean the surface of the faucet and dry with a 100% cotton cloth. If water is allowed to evaporate on the faucet surface can lead to build up of mineral deposits. Cleaning with a damp non-abrasive sponge and buffing it dry with a clean soft cloth should help keep product looking beautiful. To remove water spots, use warm water and a soft, damp cloth. Hard water stains may be removed using a 50/50 solution of white vinegar and water. Making sure that to rinse thoroughly with water afterward. As cleaner manufacturers may change their formulations at any time, therefore we do not recommend any specific cleaner.

### **Avoid using the following which can damage product finish:**

- Avoid industrial cleaners and abrasive cleaners, such as those used for toilet bowls, green Scotch-Brite heavy duty scrub sponges, Scrubbing Bubbles Bathroom Cleaner and Lysol Basin Tub, Soft Scrub, and Tile Cleaner.
- Avoid products that state on the label that they remove tarnish and rust, and those containing hydrofluoric, hydrochloric and/or phosphoric acids and caustic agents.
- Avoid harsh abrasives or polishes
- Avoid bleach-based cleaners

### **Attention California Residents:**

"WARNING: This product contains chemicals known to the State of California to cause cancer, and birth defects or other reproductive harm."

**Central Brass**  
C O M P A N Y, Inc.

For more care information or trouble shooting inquiries about your Central Brass product, please call: **Central Brass Company, Inc.** (800) 321-8630  
Monday-Friday 8 AM to 8 PM EST (5 AM to 5 PM PST)  
[www.centralbrass.com](http://www.centralbrass.com)