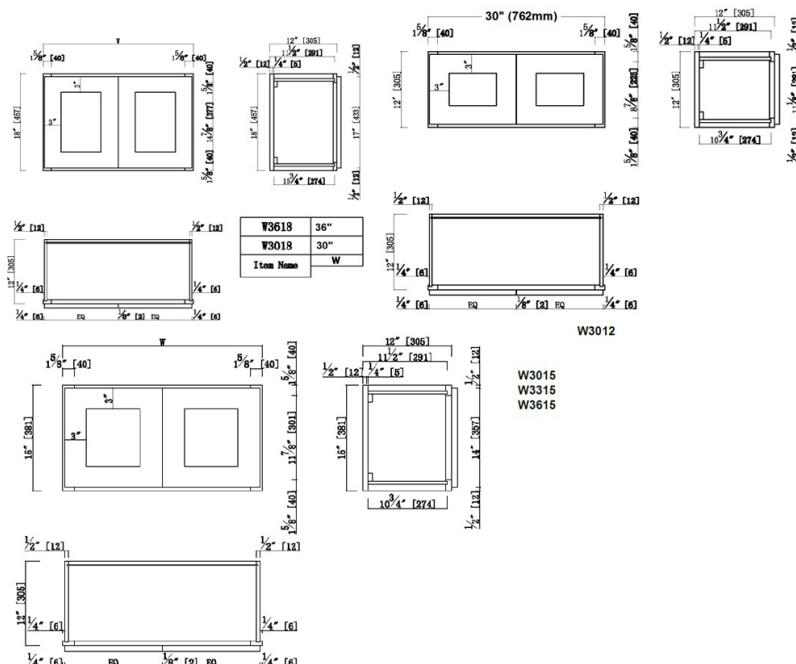


Brookings Unassembled Shaker Wall Kitchen Cabinet 30x15x12 White



SPECIFICATIONS

MATERIAL CONSTRUCTION: Wood
WOOD SPECIES: Maple
ASSEMBLED DIMENSIONS: 15" H x 30" L x 12" D
ASSEMBLED WEIGHT: 25.44 lbs.
KITCHEN CABINET TYPE: Wall
MOUNTING TYPE: Wall Mount
CONSTRUCTION TYPE: Face Frame
HINGE STYLE: Soft Close
DOOR STYLE: 2 HDF shaker doors

DRAWER DIMENSIONS 1: N/A
DRAWER DIMENSIONS 2: N/A
DRAWER DIMENSIONS 3: N/A
DWR BOX MATERIAL: N/A
DWR CONSTRUCTION: N/A
DWR GLIDE: N/A
FAKE DWR QTY: 0
FAKE DWR LOCATION: N/A

WARRANTY: 1-Year limited warranty
LEGAL FOR SALE IN CALIFORNIA: Yes
CARB COMPLIANT: CARB Phase 2
TSCA TITLE IV COMPLIANT: Yes

NUMBER OF SHELVES: 0
SHELF STYLE: N/A
ADJUSTABLE SHELVES: N/A
SHELF ADJUSTIBILITY INCREMENTS: N/A
SHELF DIMENSIONS: N/A
SHELF THICKNESS: N/A
SHELF MATERIAL: N/A
FACE FRAME MATERIAL: Solid Maple
SIDES MATERIAL: Plywood
BOTTOM MATERIAL: Plywood
BACK PANEL MATERIAL: Plywood
BACK BRACE MATERIAL: Wood
TOE KICK INSET WIDTH: N/A
TOOLS NEEDED FOR INSTALLATION: Phillips Screwdriver
Mallet Wood Glue
Wood Screw
FASTENER TYPE:



TYPE:
JOB:
ORDER CODE:
APPROVALS: