

BEAUTME®

Full-length Vanity Mirror User Manual



1. Product Information

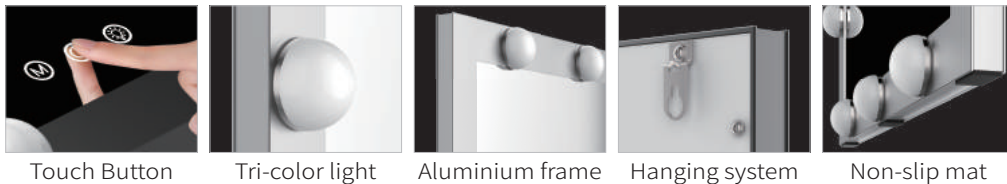
Product Name: Full-length Vanity Mirror with Lights	
Model: TM-F2	Product size: 1600x600x25mm
Color: Black, Silver	Glass size: 1514x514x3mm
Power supply: DC12V/2A	Product power: Max Power 26.4W
Color temperature: Day light 6500K Natural light 4800K Warm light 3200K	

- (1) Main material: Metal+Glass+ABS.
- (2) There is a 1514x514x3mm HD glass on the mirror front side, with lighted LED bulbs around.
- (3) Cool/natural/warm light can be adjusted brightness according to the environment.

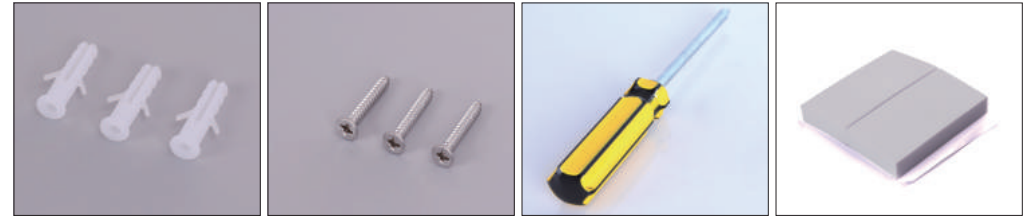
2. Instructions

- 1) Power by DC Plug-in;
- 2) ⏻ Power switch: Touch a second to to turn on/off the mirror.
- 3) ⚙ Brightness adjustment switch: Touch 2-6 seconds to adjust brightness.
- 4) 🌈 Light switch: Touch a second to change light. There are 3 lights color available.

3. Product detail



4. Accessories



2. Expansion tube * 3

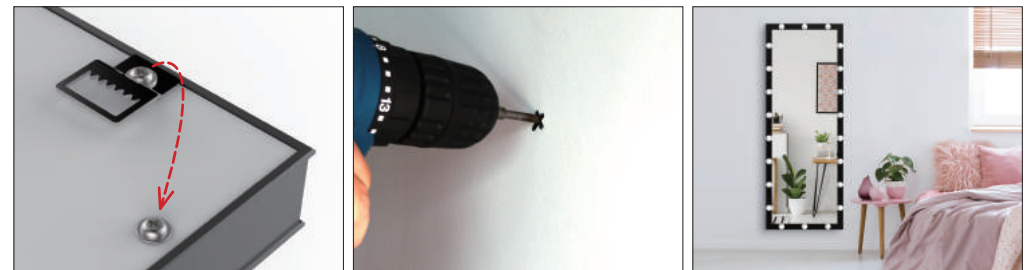
3. Screw * 3

3. Screwdriver * 1

4. Protective foam*2

5. Installation

Situation1 Wall mounting



1. When hanging horizontally, please remove the hook to another side and fix the screw

2. Drill holes on the wall and tighten the screws

3. Finish mounting

Situation2 Lean against the wall



1. Remove the mirror from the package and lean directly against the wall

Notice:

Mirrors are fragile products.
Please be careful during installation.