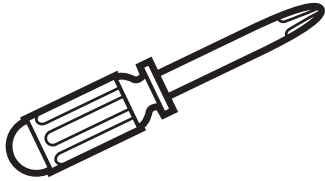


INSTALLATION INSTRUCTIONS

DeerValley®

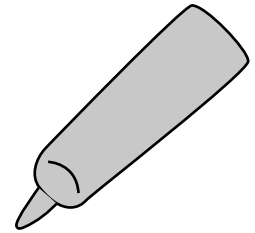
Suggested Tools and Materials:



Cross Screwdriver



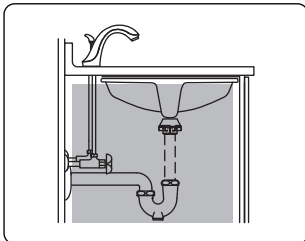
Clean Cloth



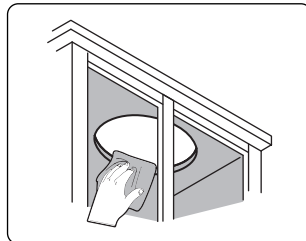
Silicone Sealant

- **Attention:** DO NOT use adhesives or adhesive sealants to install this sink.

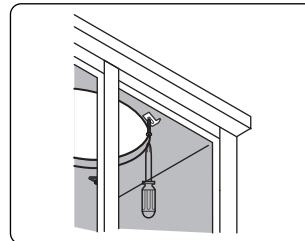
Installation Steps:



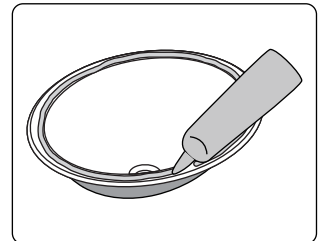
1. Verify the cabinet clearance.



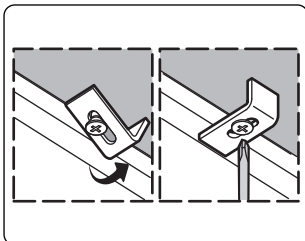
2. Clean the bottom of the countertop and the edge of the sink.



3. Install the clamp loosely.



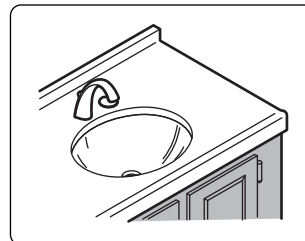
4. Apply plenty of enough silicone sealant around the surrounding area.



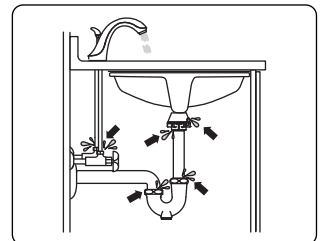
5. Position the sink under the opening. Fix the sink in place and rotate each clamp to the side. Tighten the clamp quickly to secure it.



6. Wipe off the excess sealant immediately.



7. Complete the installation of faucet and drain.



8. Check all connections for leaks when running water into the sink.