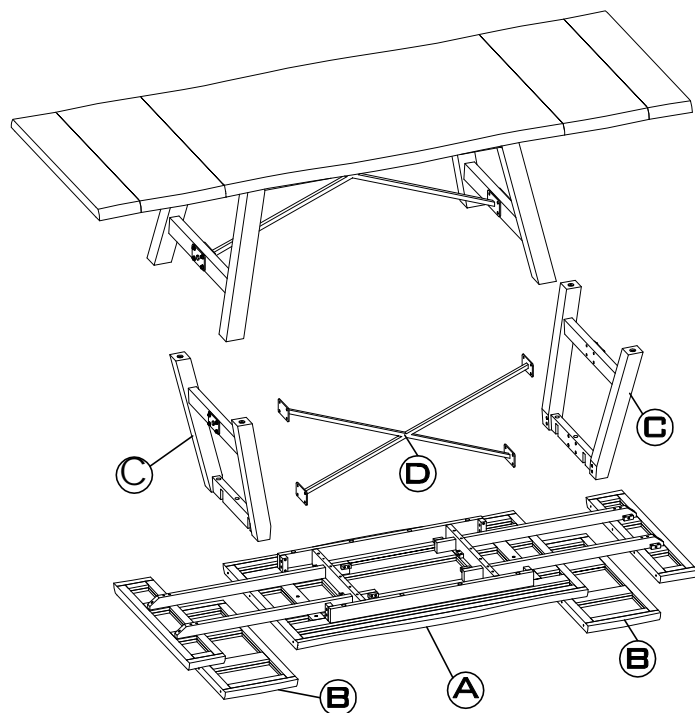


ASSEMBLY INSTRUCTIONS

NIXON EXTENSION DINING TABLE



Parts Check List

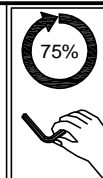
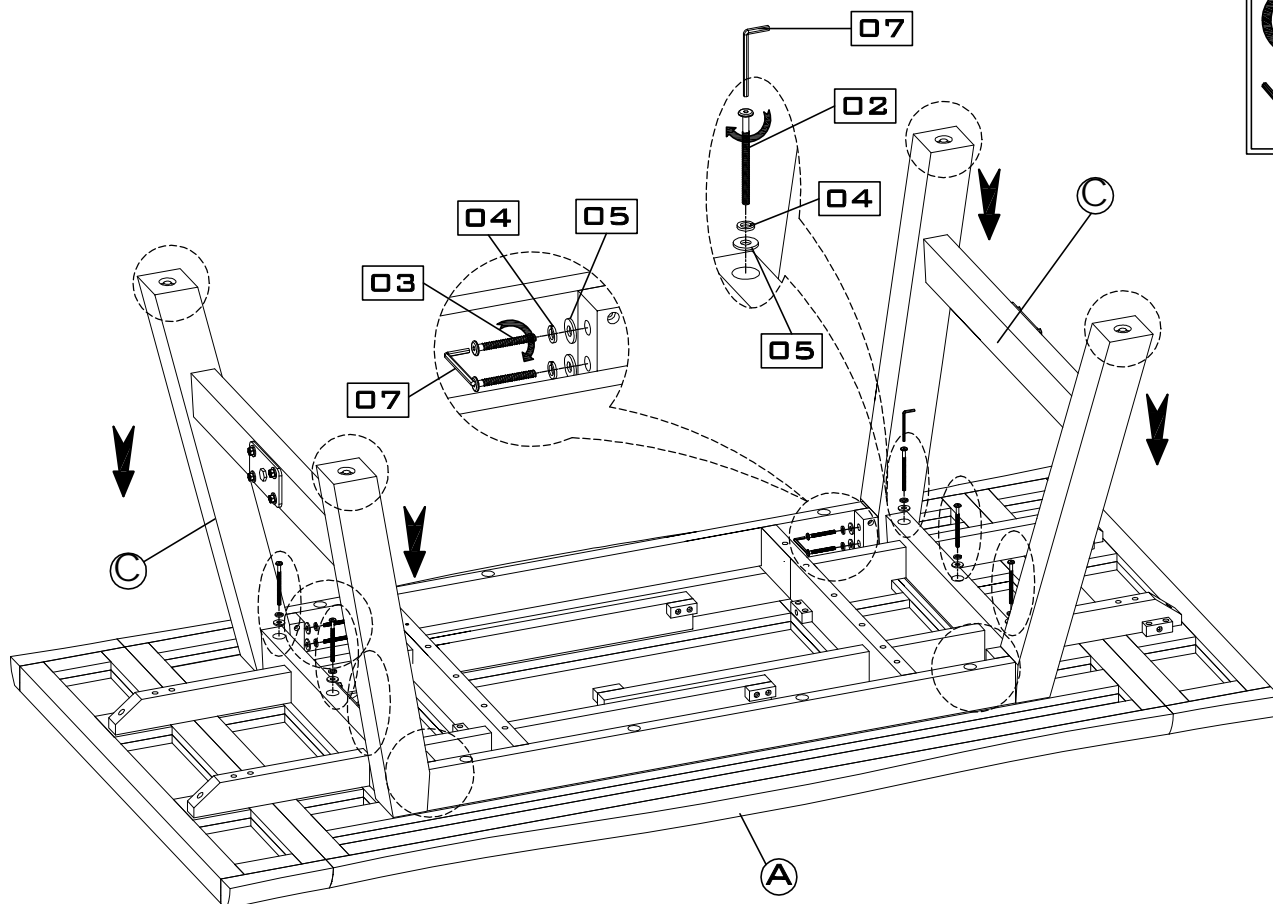
Code	Components	Q'ty
Ⓐ	TABLE TOP	x01
Ⓑ	EXTENSION LEAF	x02
Ⓒ	LEG FRAME	x02
Ⓓ	X STRETCHER	x01

Hardware Check List

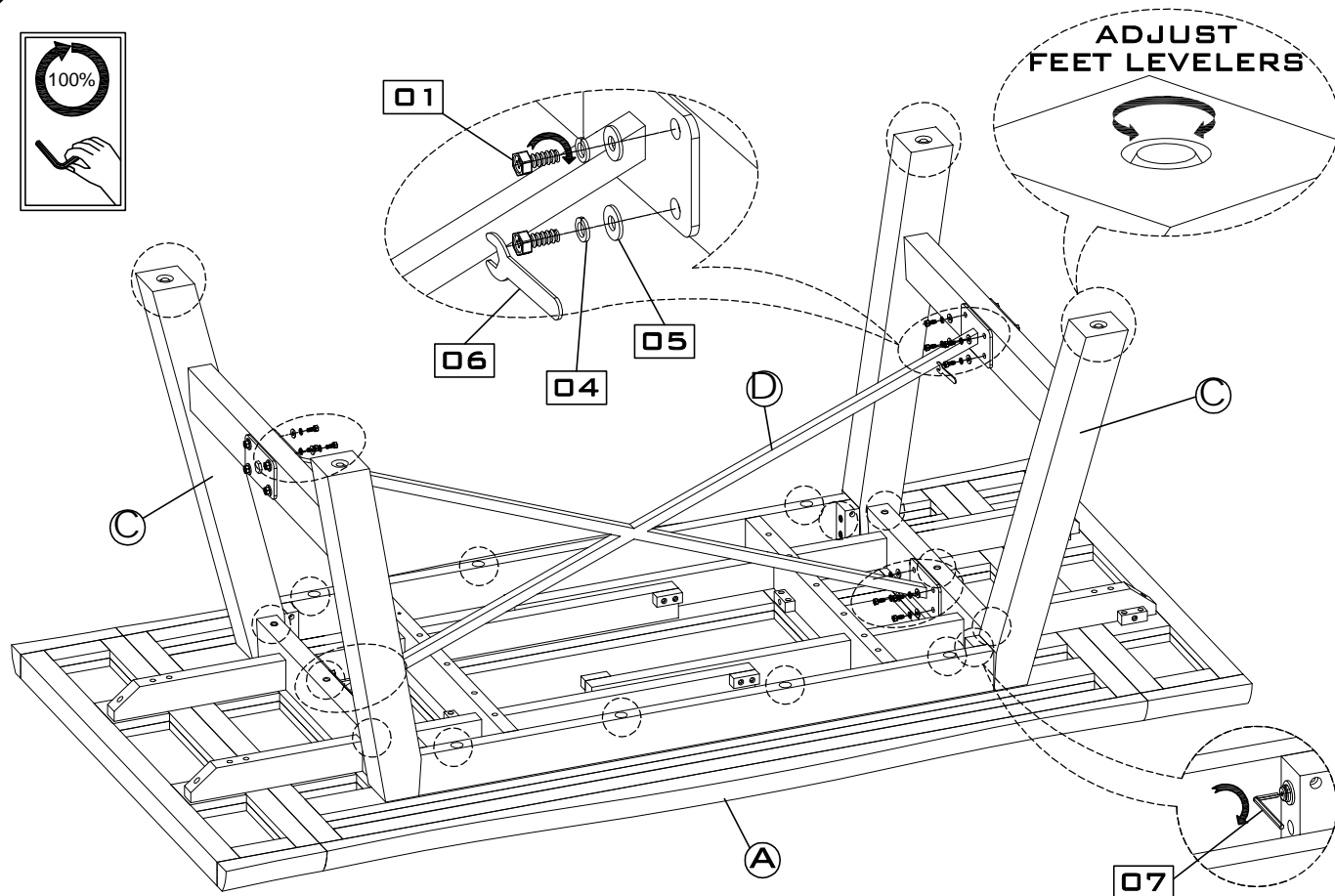
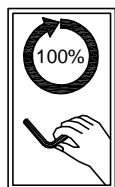
code	description	q'ty
01	Hexagon Bol t	x16
02	Long Bol t	x06
03	Short Bol t	x08
04	Spring washer	x30
05	Large Flat washer	x30
06	Spanner	x01
07	Allen key	x01

· PLEASE DO NOT DISCARD ANY OF THE PACKAGING UNTIL YOU HAVE CHECKED ALL THE PARTS AND THE PACKS OF HARDWARE.
 · BEFORE YOU BEGIN TO ASSEMBLE YOUR NEW PIECE OF FURNITURE, PLEASE CHECK TO ENSURE THAT ALL PARTS HAVE BEEN SUPPLIED.
 · FOLLOW INSTRUCTIONS CLOSELY AS DEVIATION FROM THEM MAY VOID YOUR WARRANTY AND PRESENT A POSSIBLE SAFETY RISK.
 · IT IS RECOMMENDED THAT ASSEMBLY IS DONE ON A SOFT SURFACE LIKE CARPET TO AVOID ANY DAMAGE.
 · PERIODICALLY CHECK AND RE-TIGHTEN ANY FASTENERS. WIPE DOWN ALL SURFACES WEEKLY WITH A CLEAN CLOTH. DO NOT CLEAN ANY SURFACES WITH HARSH ABRASIVES OR CHEMICALS.

1.

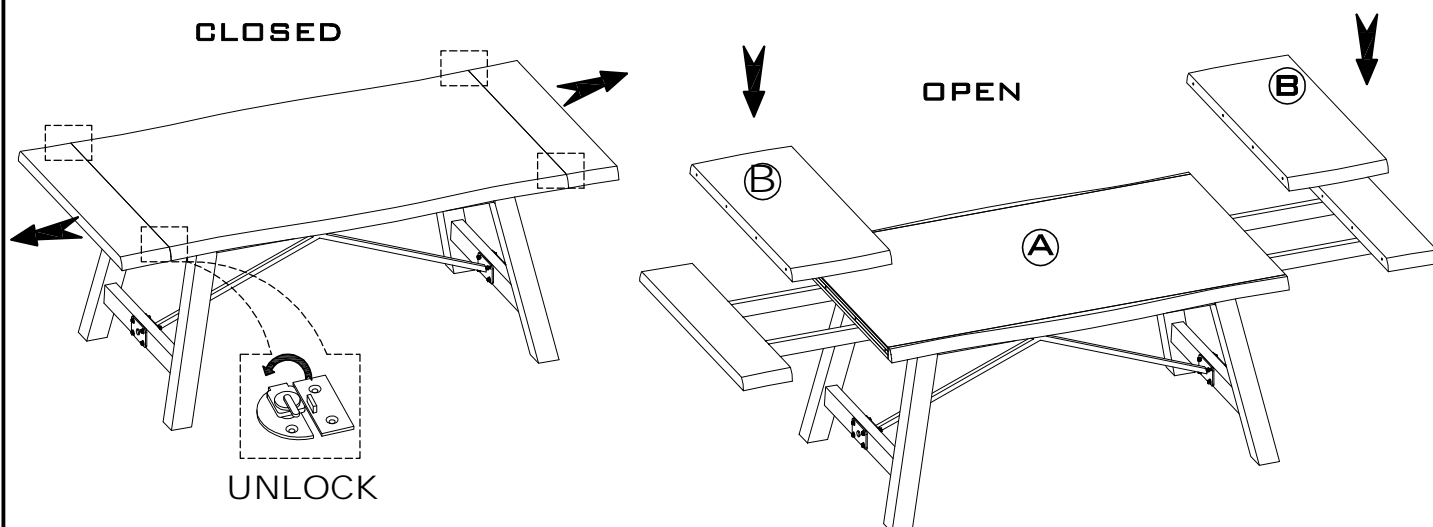


2.



3.

Notice:
Do not lift table by the end caps with or without the extension leaves in place



4.

