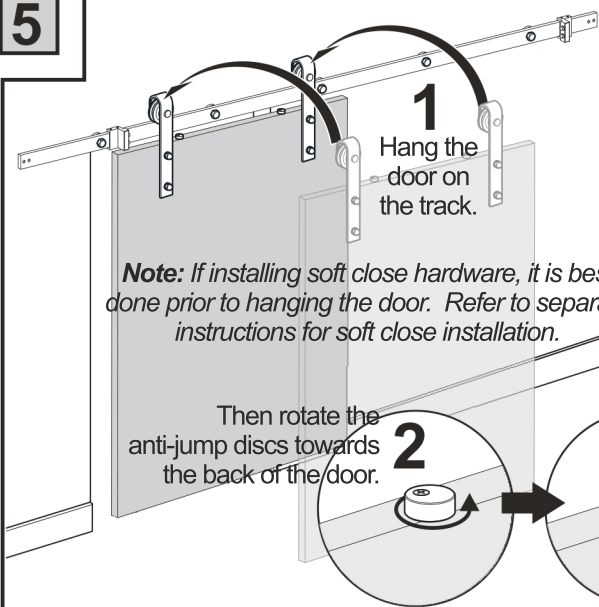


5

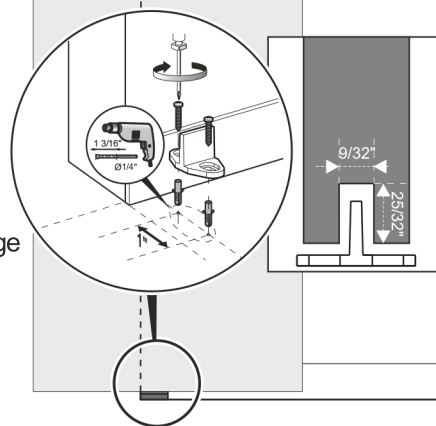


**Note:** If installing soft close hardware, it is best done prior to hanging the door. Refer to separate instructions for soft close installation.

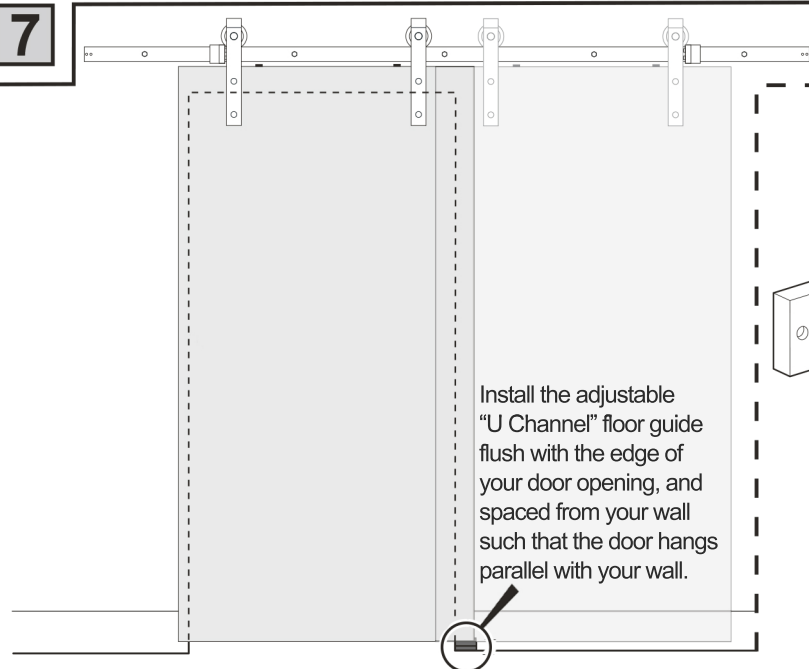
6

If opting to use the "U Channel" floor guide, skip Step 6 and proceed to Step 7.

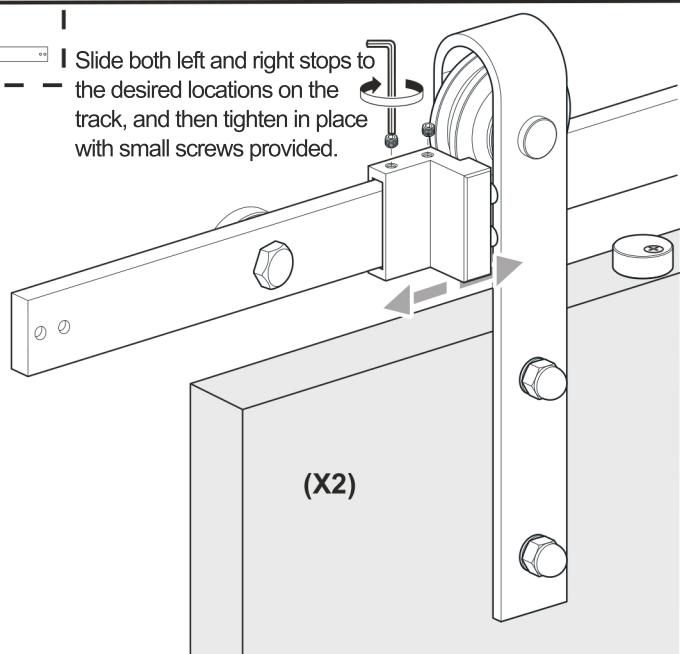
If opting to use the "T" floor guide, your contractor should route a groove in the bottom of your door and install "T" guide as shown in the image at right.



7



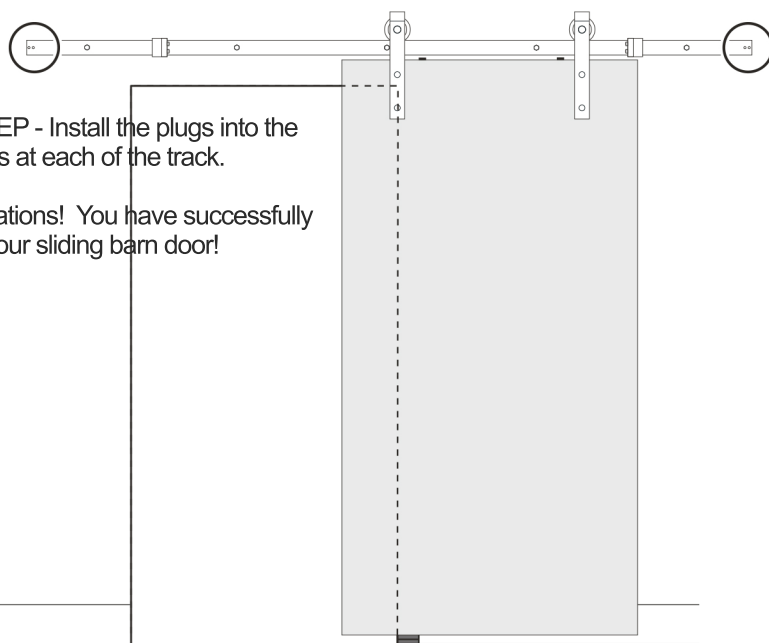
Slide both left and right stops to the desired locations on the track, and then tighten in place with small screws provided.



8

**FINAL STEP** - Install the plugs into the small holes at each of the track.

Congratulations! You have successfully installed your sliding barn door!



(X4)

