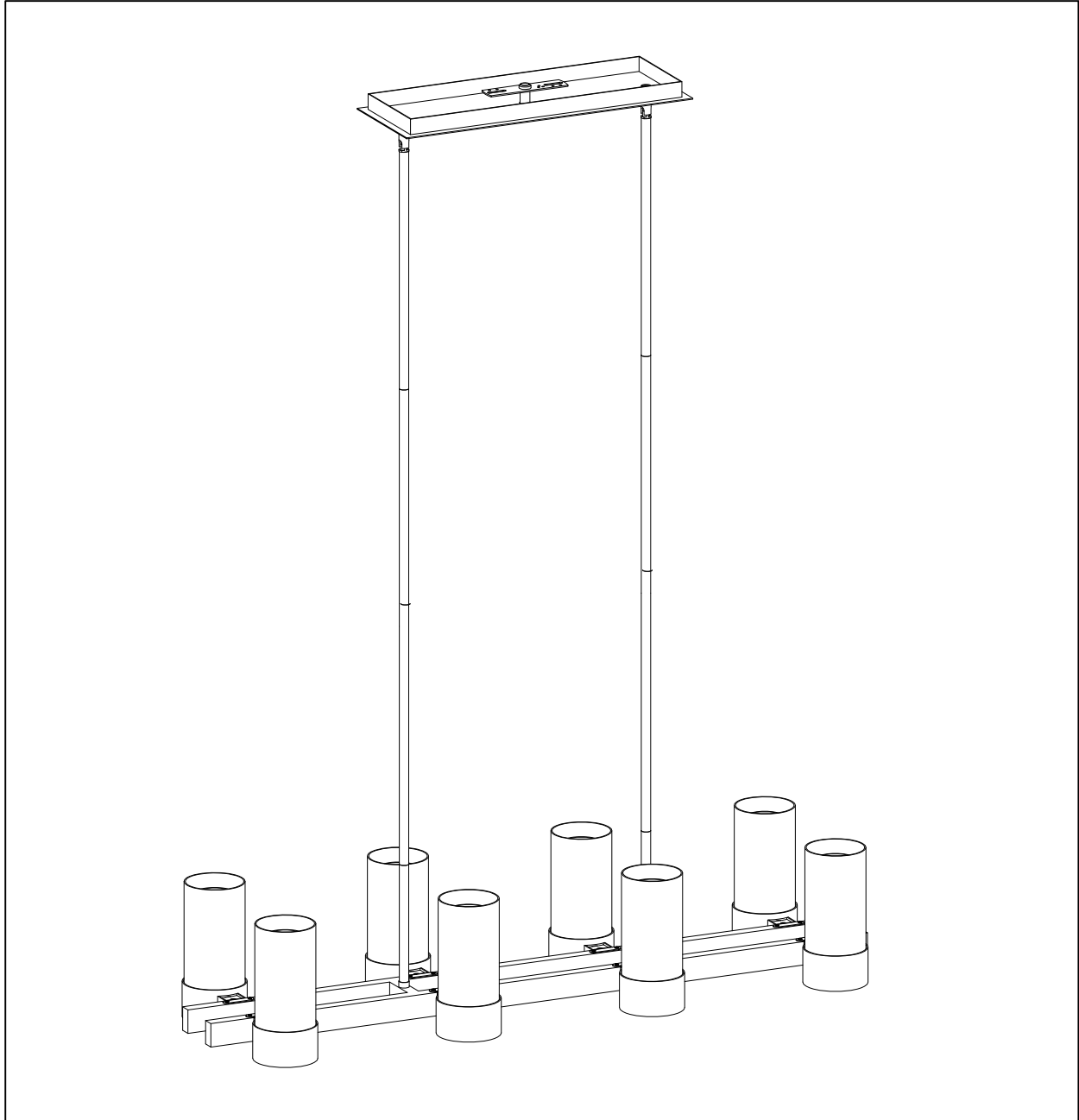




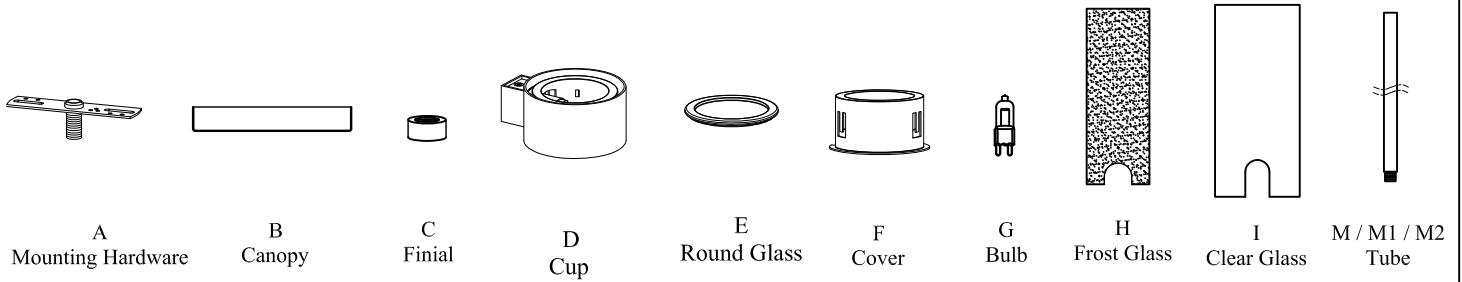
PRODUCT NAME: Silo  
ITEM NUMBER: 23079

Please consult your electrician for hanging fixture and wiring.

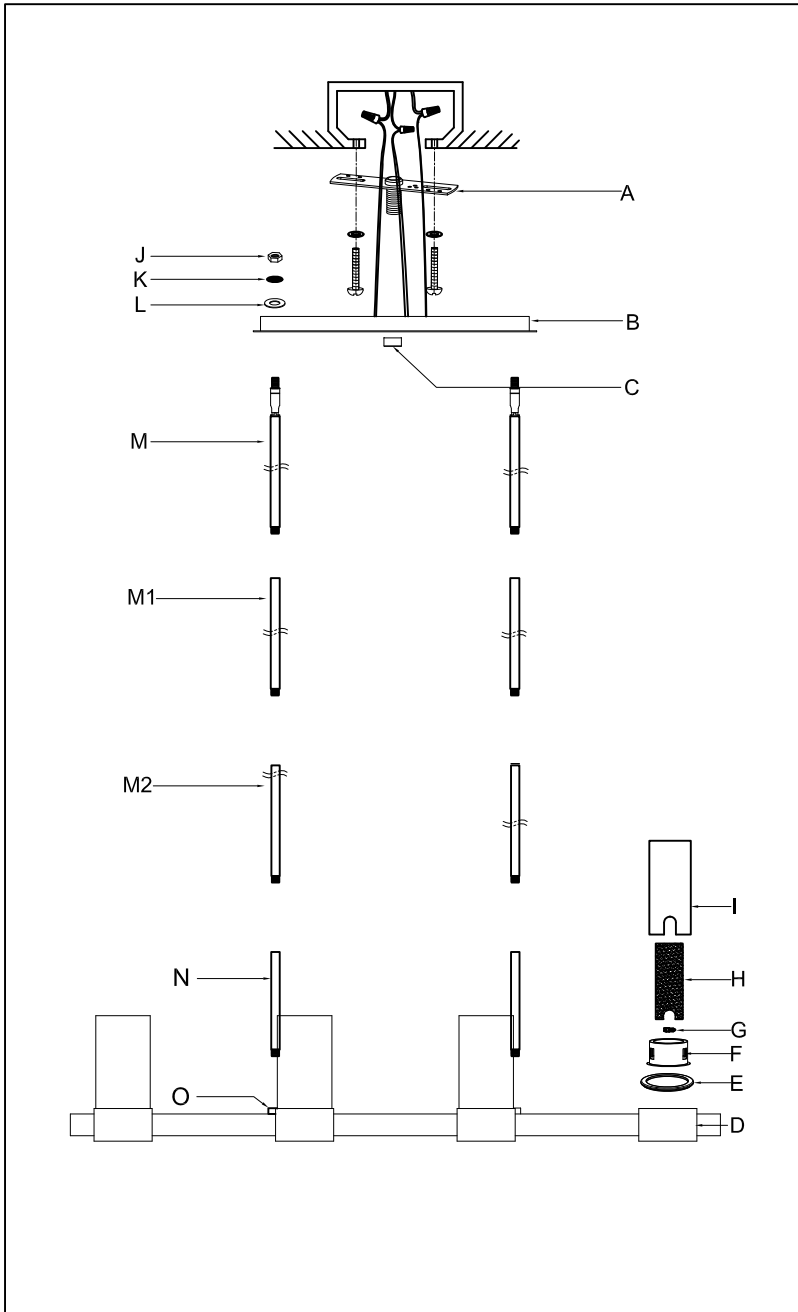


Bulb(included): 8 x 40W G9 Candelabra Bulbs

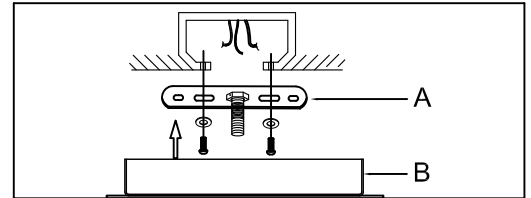
**IMPORTANT: Turn OFF the power at the main fuse or circuit breaker box before starting installation**



Locate all hardware & components before discarding packaging

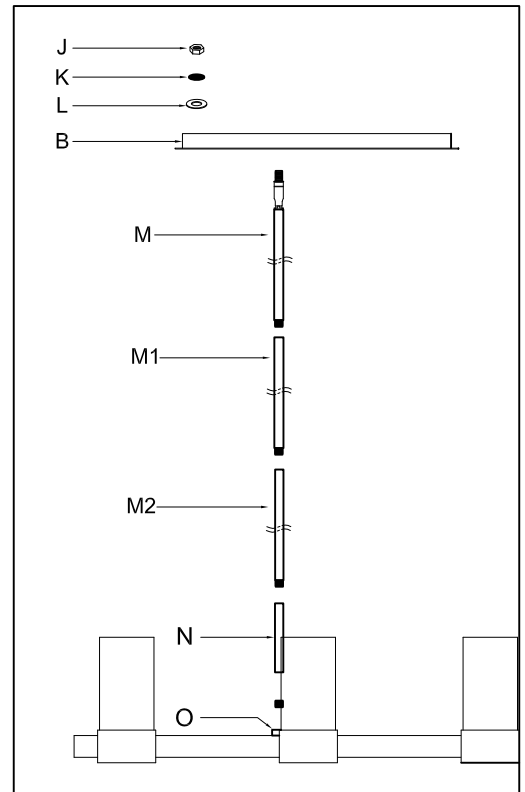


1.)



Step.1: Remove mounting bracket (A) from back plate (B) and install to electrical box.

2.)

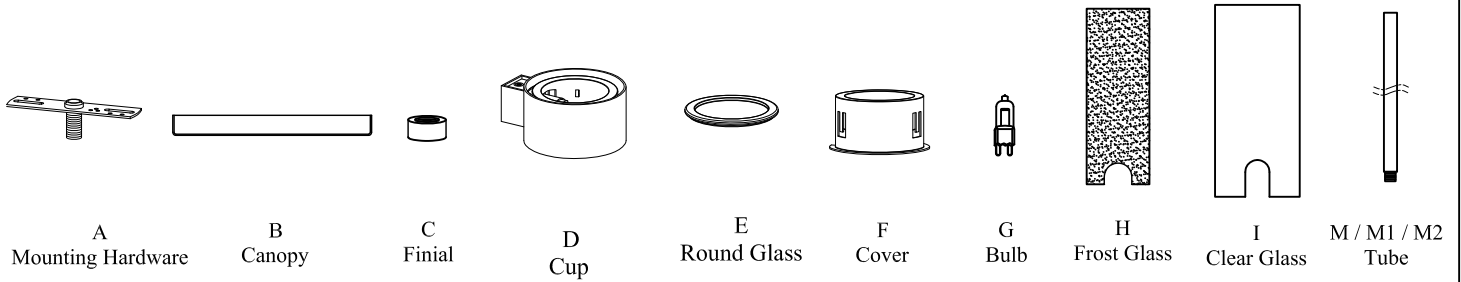


Step.2: Run wire through stems and combine stem lengths to meet desired mounting height. Connect canopy to stem using washer (L) lock washer (K) and hexnut (J) to secure.

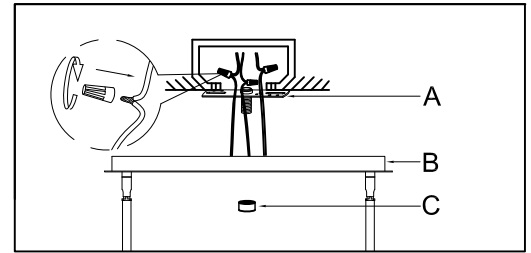
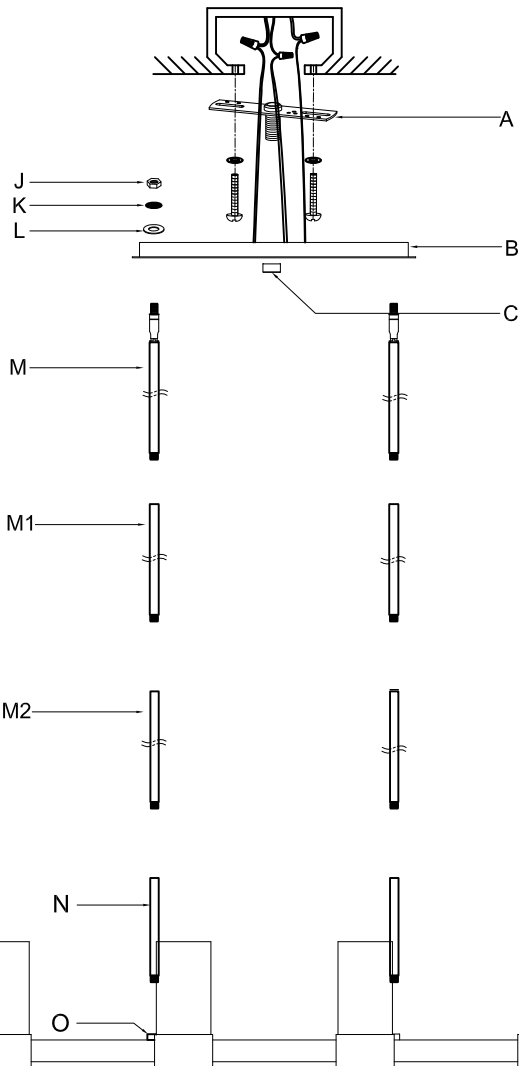
### Cleaning & Care:

You May use talcum powder and a soft cloth for cleaning. Do not use abrasive cleaner

**IMPORTANT: Turn OFF the power at the main fuse or circuit breaker box before starting installation**

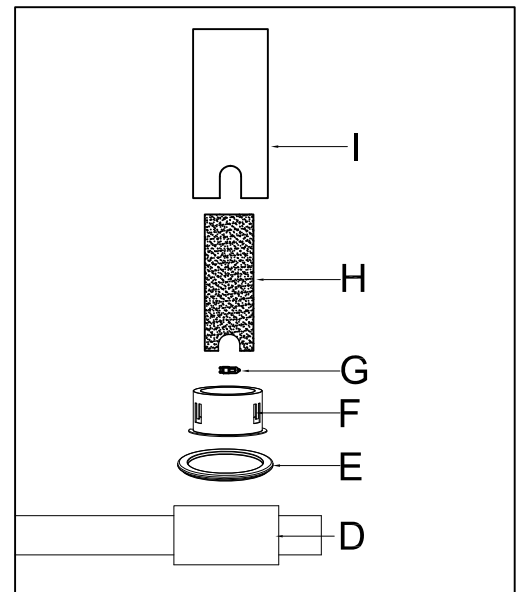


Locate all hardware & components before discarding packaging



Step.3: Wire fixture to wires in outlet box. Bare wire is Ground wire. Install fixture to mounting bracket using finial (C).

4.)



Step.4: Put the round glasses (E) into the cups (D). Put the bulbs (G) onto the sockets which inside the cups (D) . Attach the inside frost glasses (H) and outside clear glasses (I) to the covers (F), make sure the glasses are stable. Put the whole set glasses ( H & I ) with the covers (F) into the cups (D).

### Cleaning & Care:

You May use talcum powder and a soft cloth for cleaning. Do not use abrasive cleaner