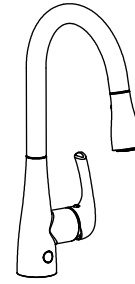


# WESTBRASS

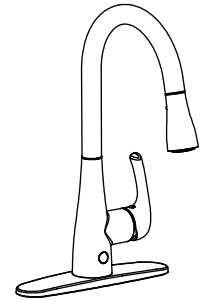
Fine Decorative Plumbing Since 1935

## KITCHEN SENSOR FAUCET

### USER MANUAL

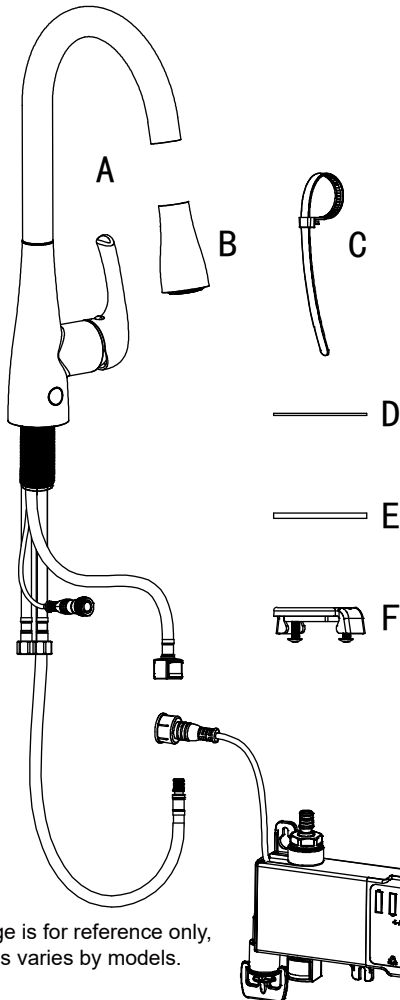


KA03A

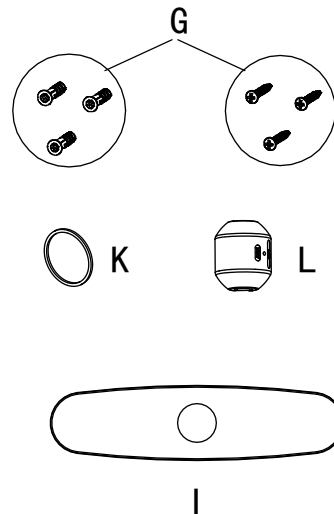


Single hole installation  
without base

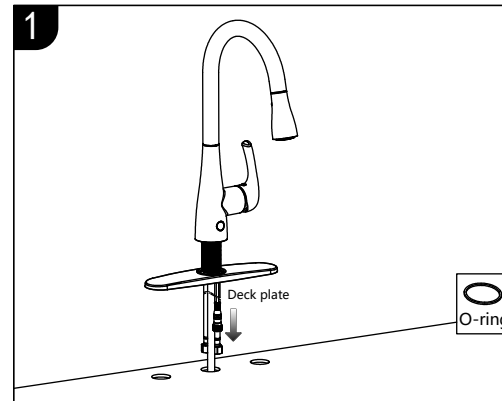
3-hole installation



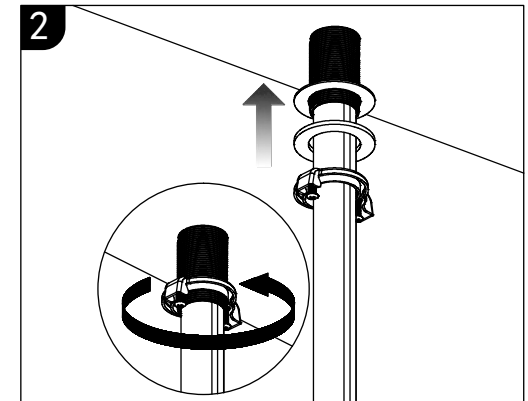
No.	Description	QTY
A	Faucet	1
B	Spray Head	1
C	Zip Tie	1
D	Rubber Washer	1
E	Metal Gasket	1
F	Mounting Nut	1
G	Screw Set	3
H	Control Box	1
I	Deck Plate(Optional)	1
K	O-Ring	1
L	Counter Weight	1



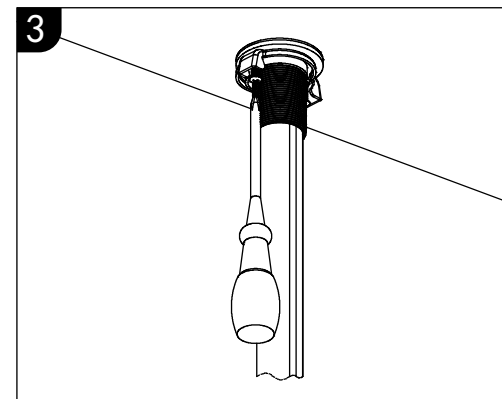
• Image is for reference only,  
styles varies by models.



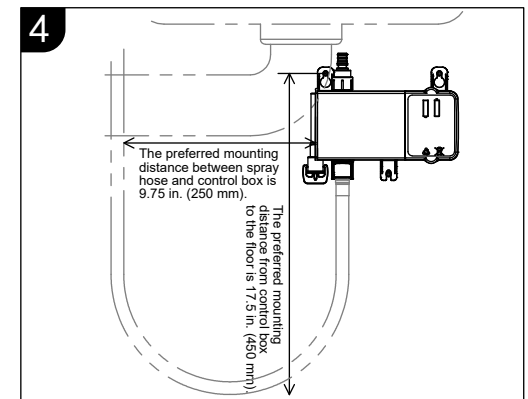
For 1-hole sink installation, insert the O-ring onto the faucet base, over the cable, hoses and the shank onto the faucet bottom, and then mount the faucet on the sink. For 3-hole installation, insert the deck plate over the cable and hoses against the faucet base, aligning the handle so the sensor tab is in front of the sink, and the base aligned across the holes.



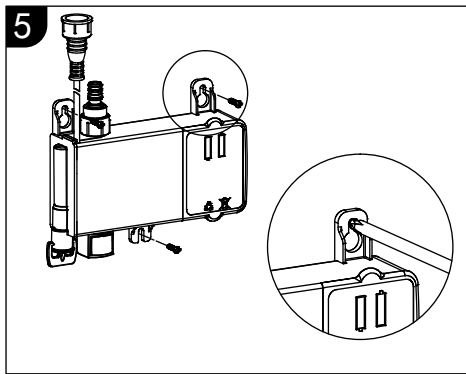
Slide the rubber washer first, the Metal gasket second, and then the mounting nut over the hoses and the data cable onto the stem and hand tighten them firmly.



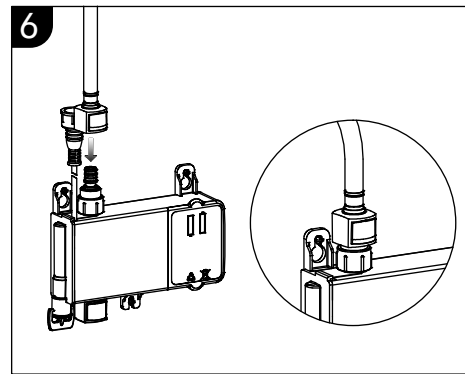
Use a screwdriver to thread the 2 screws tight against the metal washer. Do not over tighten.



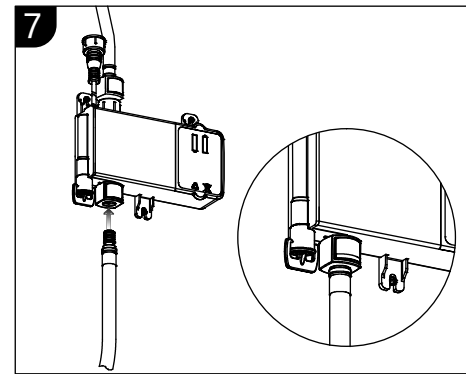
The dimension shown in the figure is a preferred mounting distance for the control box. The distance can be adjusted to better fit your space as required.



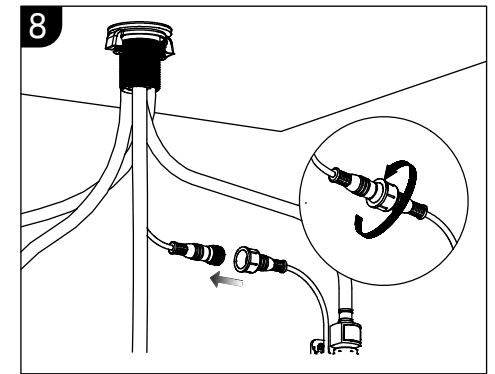
Mount the screws into the wall under the sink and hang the control box according to the preferred mounting distance.



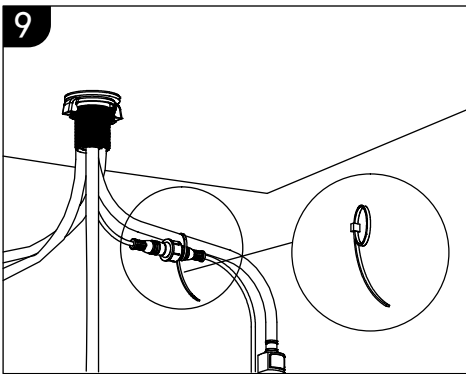
Attach the outlet hose to the adapter on top of the control box with the, "Quick-connection," until the connection clicks.



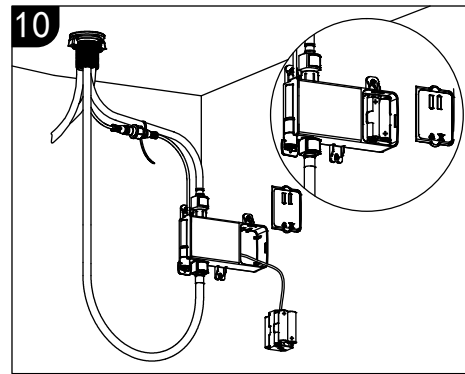
Attach the black nylon braided hose to the adapter at the bottom of the control box until it clicks in place.



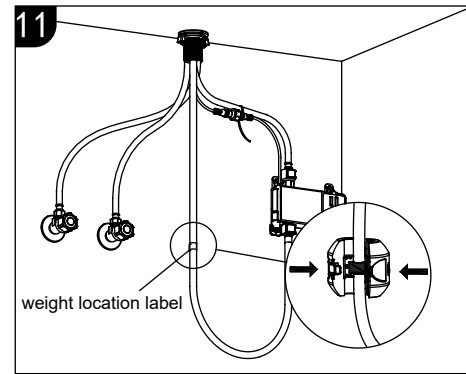
Connect the sensor cables and hand tighten them firmly. NOTE: Sensor is, "Keyed," and installs only one way.



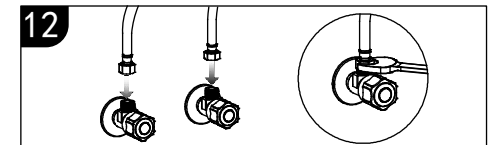
Tie the sensor cable together with the outlet hose by using a zip tie.



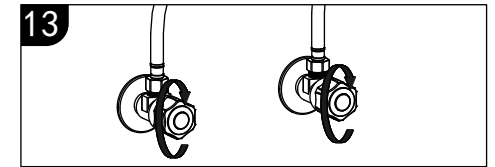
Remove the battery pack cover on control box and take out the battery pack; insert 4 AA batteries (not included). Put the battery pack back in the control box and replace the cover firmly. The batteries should be changed when the sensor flashes a red light. Rechargeable batteries can be used.



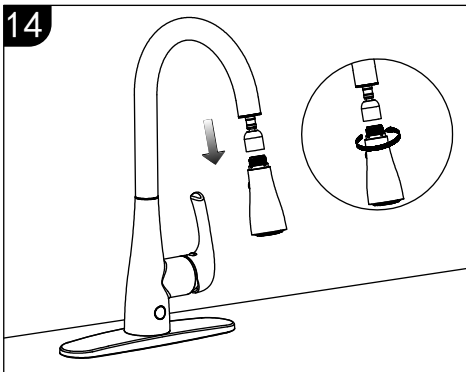
Install the counterweight on the pulldown hose at the marked position. It should be placed on the hose, and secure it with a screwdriver.



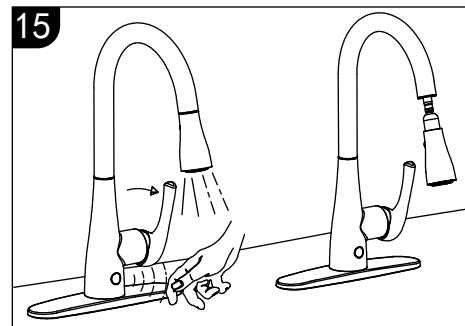
Connect the hot & cold supply lines onto the 3/8" angle stop valves and secure the connection with an adjustable wrench.



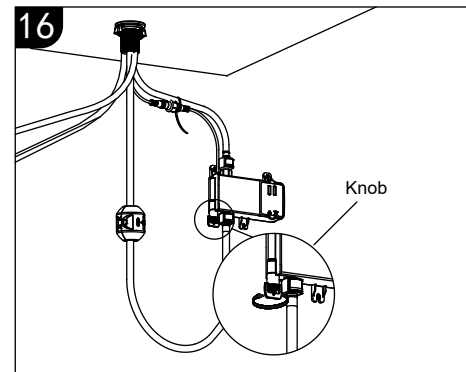
Turn on the water supply and check the water connections for leaks.



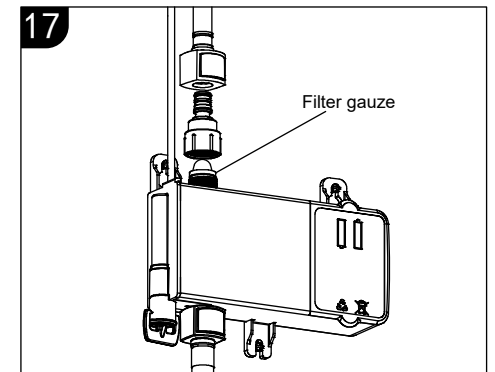
Attach and secure the spray head onto the pulldown hose. Turn on the faucet handle. Wave your hand over the sensor at the base of the faucet. Check for leaks. The water flow & temperature changes by moving the handle. Run the water. It will stop in 3 minutes.



Pull out the spray head. The infrared sensor begins to work when the spray head is pulled out. Slide the hand shower back in and the water will turn off. We recommend turning the faucet off when it will not be used for an extended length of time.



For manual operation, turn the knob beneath the control box counter-clockwise to the end (as shown in figure 16). The sensor will be disabled and the faucet will be activated by the handle only.



If the water flow rate is lower than normal, there may be built up on the filter screen. Shut off the water valves and remove the outlet hose from the control box. Unscrew the plastic outlet adapter from the control box. Take out the filter screen and clean it. Reassemble the outlet hose connector. Attach the inlet hose to the adapter until it snaps in place.