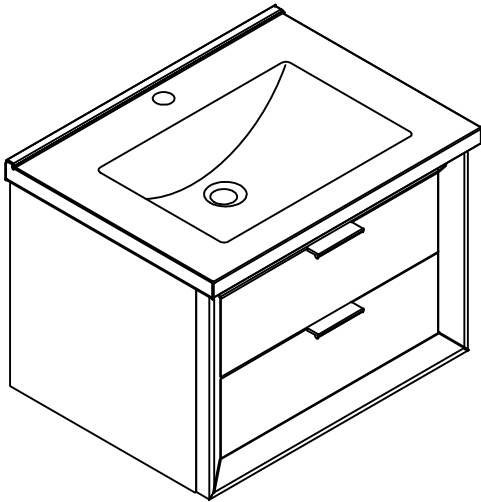
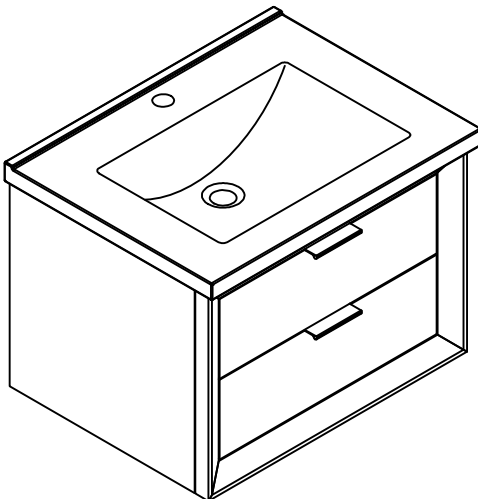


Assembly Instructions

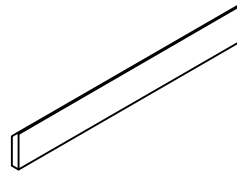


Thank you for purchasing this quality product.
Please ensure to check all parts in below list.
If item(s) are missing, please report to your retailer.
We value your feedback. Please take time to
leave us a review about your experience.

Parts List



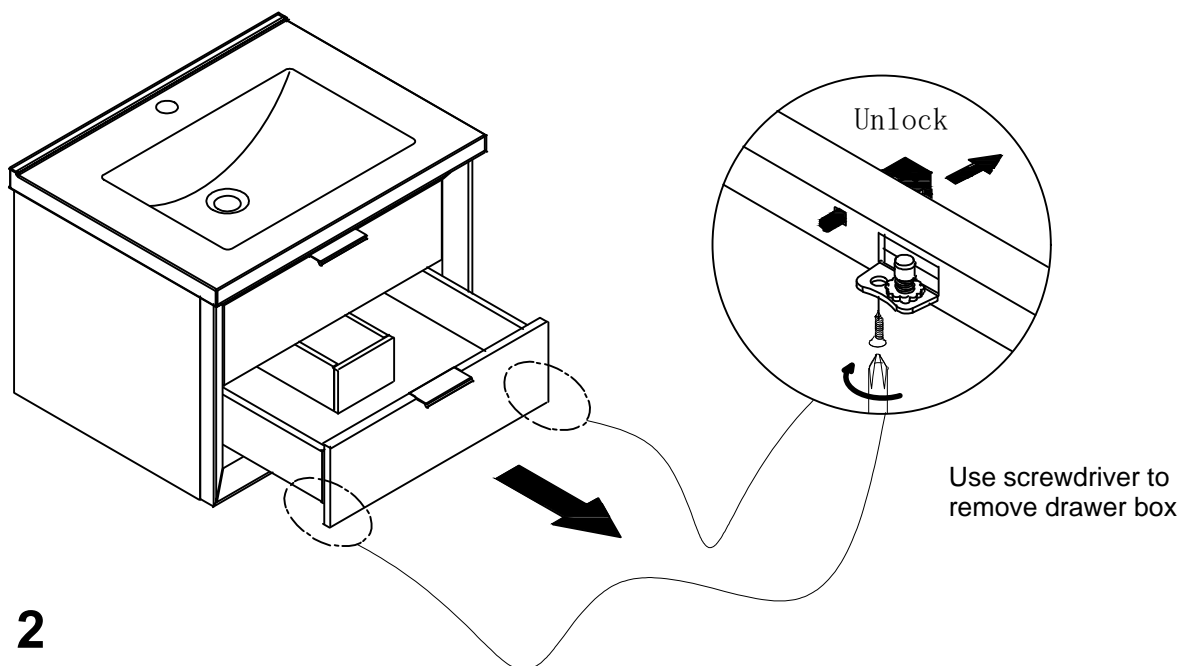
A x1



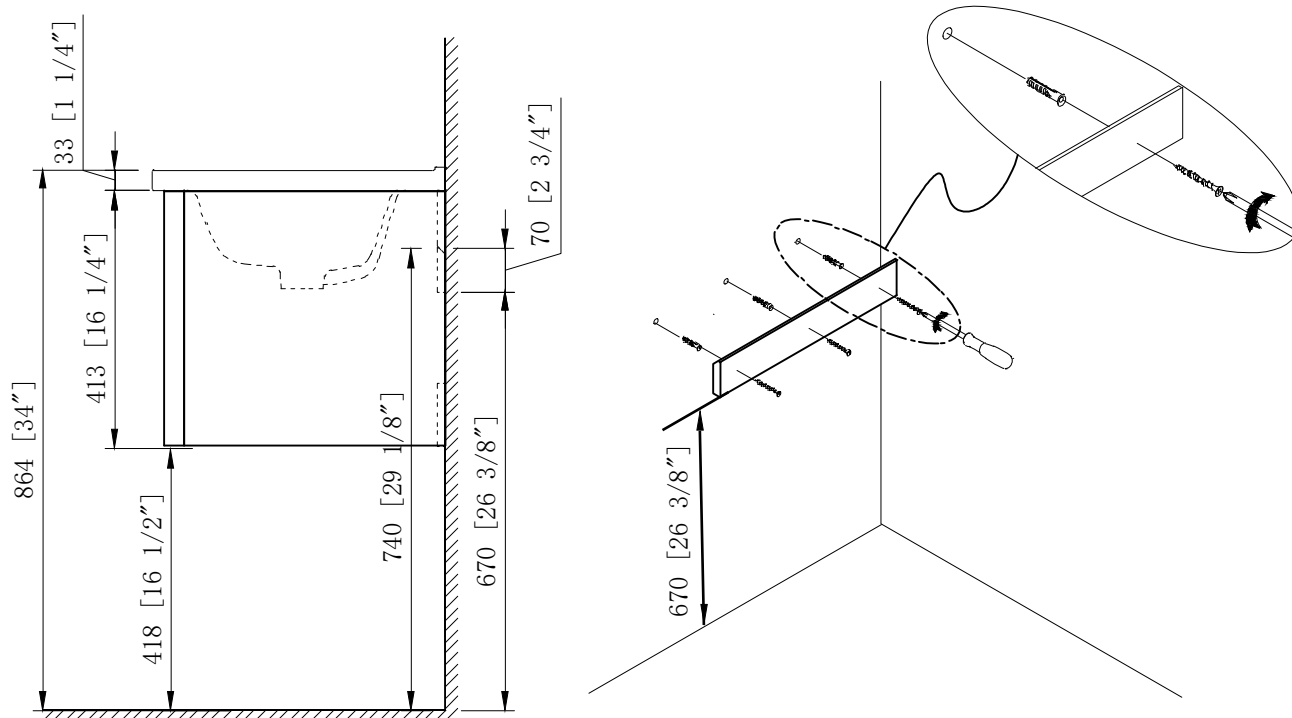
B x1

Assembly Instructions

Step 1



Step 2



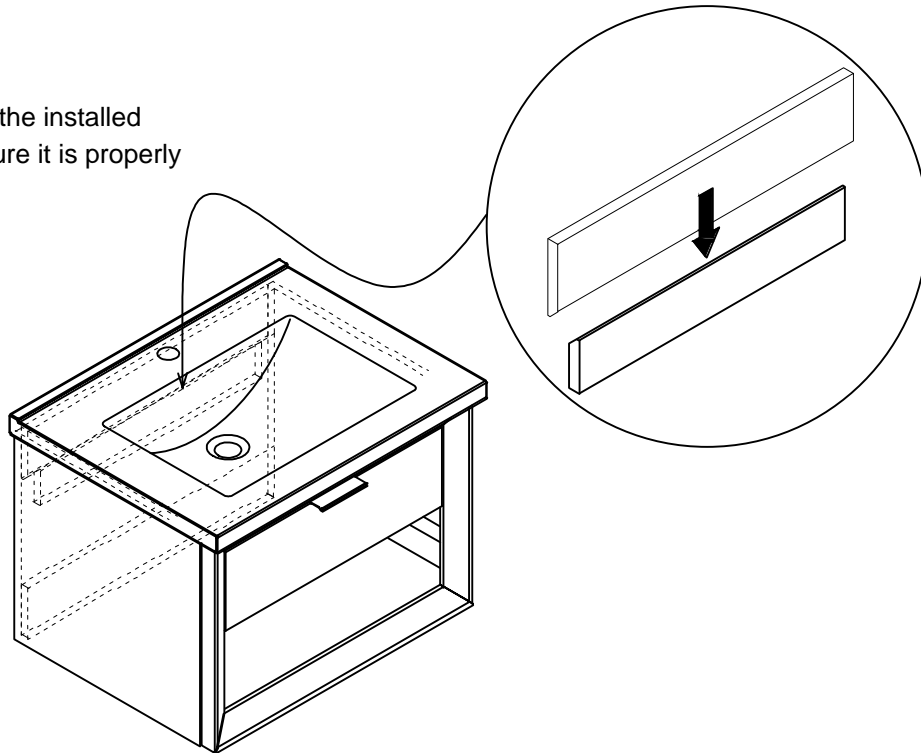
Align, level and install the hanging strip by using appropriate hardware suitable for the wall.
(Hardware not provided)

Suggested height from the floor to the bottom of the strip will be 26-3/8".

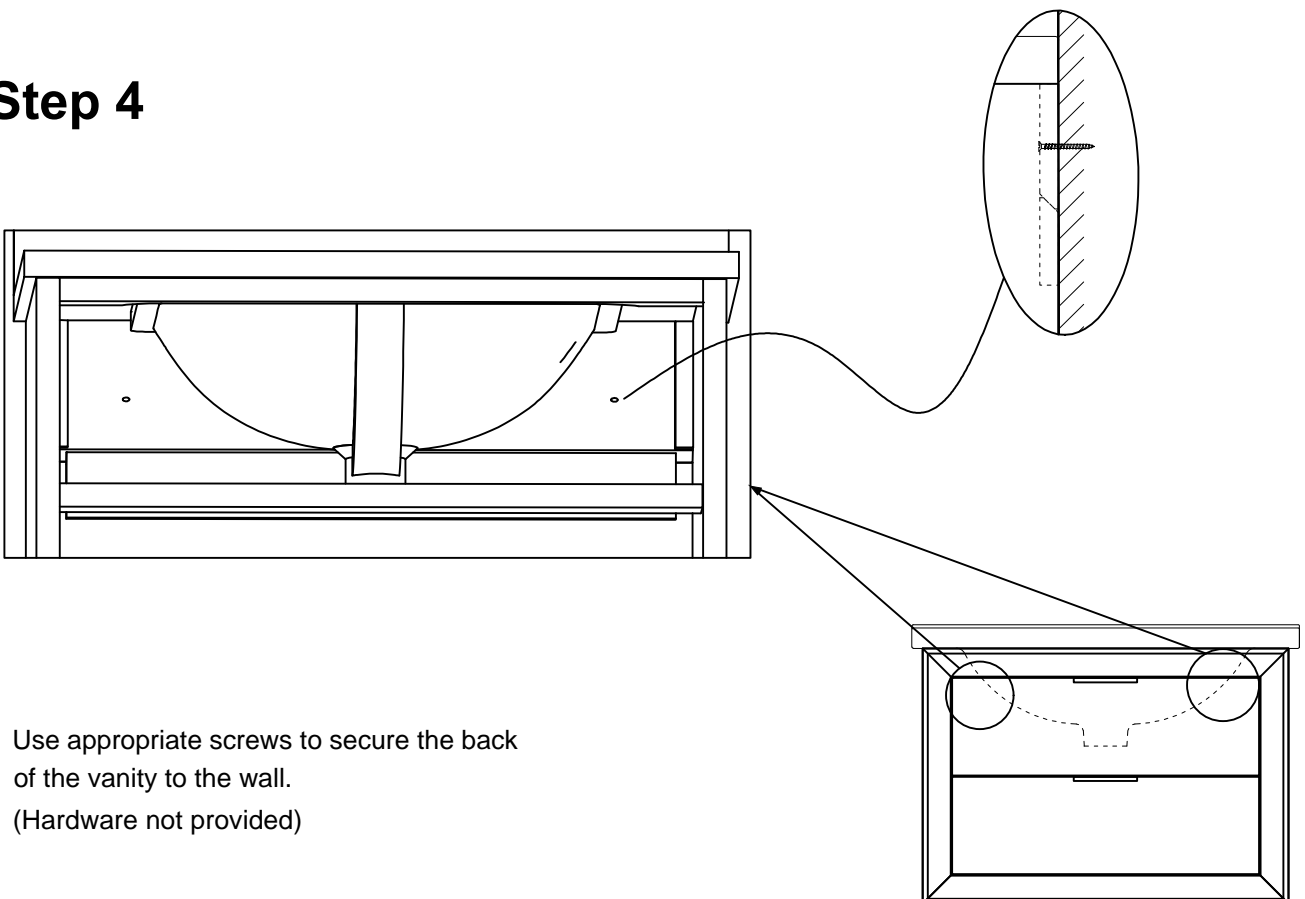
Assembly Instructions

Step 3

Place the vanity on to the installed hanging strip and ensure it is properly secured.



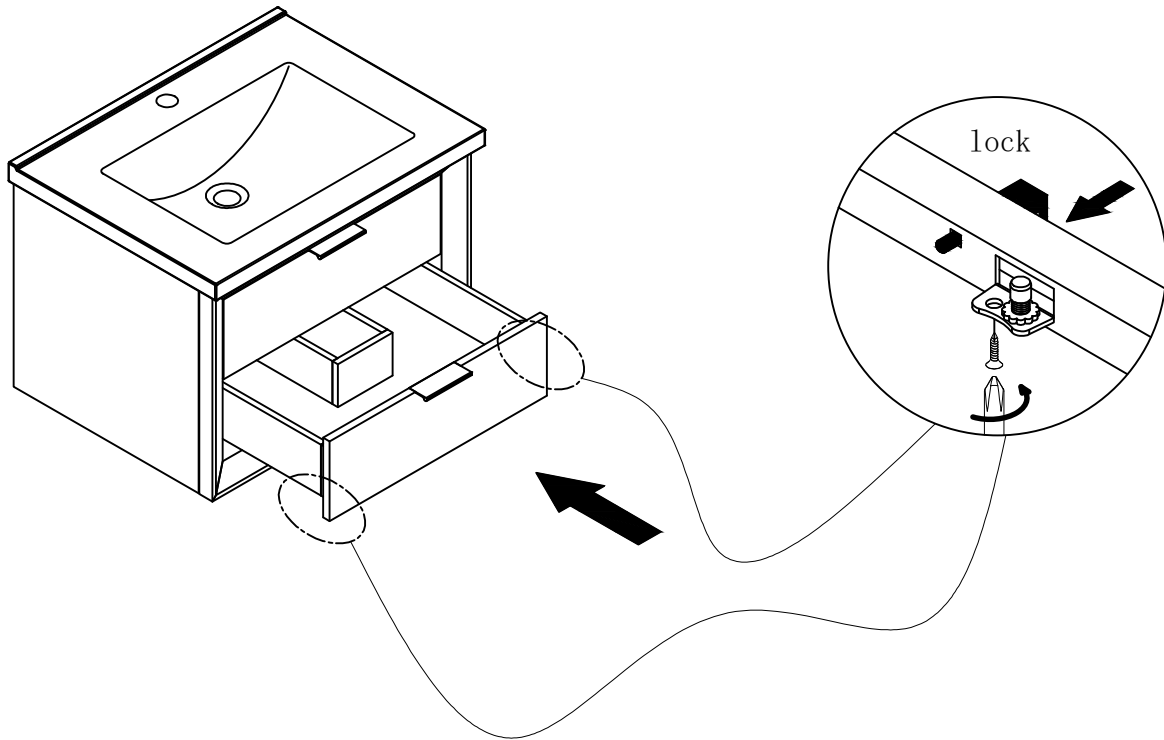
Step 4



Use appropriate screws to secure the back of the vanity to the wall.
(Hardware not provided)

Assembly Instructions

Step 5



Insert the drawer after the faucet and all plumbing installation.