

Central Brass Company, Inc.

3325 S. Garfield Ave.
Commerce, CA 90040
(800) 321-8630
www.centralbrass.com

INSTALLATION

Tools:



Adjustable Wrench



Plumbers Putty



Teflon Tape



Rags

Model Number: 0280, 0281, 0282, 0286 Series

Warnings and Notes:

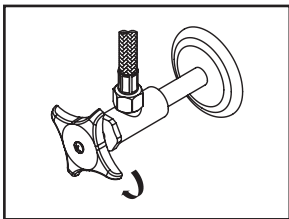
Check with local plumbing code requirements before installation.
This product should be installed by a local listed plumber.

Do not use plumbers putty on threads.

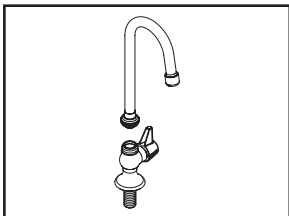


Installation Steps:

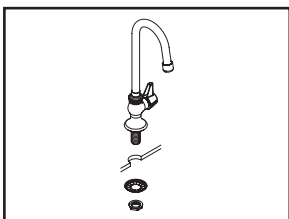
Single Handle Bar Faucet



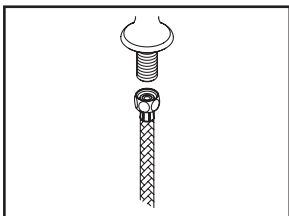
(1) Shut off water supply. Remove old faucet. Clean mounting surface in preparation for new faucet.



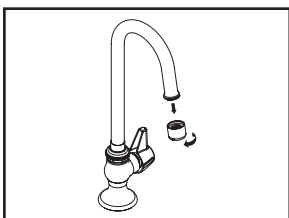
(2) For spout with spout nut, make sure the spout is installed straight to the faucet body to avoid damaging spout O-ring. For spout with threaded end, apply Teflon tape on spout threaded end and install spout to faucet body, adjust spout to face straightforward.



(3) Apply plumbers putty on the bottom of faucet, place faucet shank through the mounting hole. Slide the crowfoot washer through shank from underneath the sink. Tighten the locknut with the help of 1-3/32" size socket.



(4) When using stainless steel braided faucet supply hose; this faucet requires one end of the supply hose to have 1/2" female IPS connection. The other end of this supply hose must match the thread on the water supply valve under the sink. Once you've identified the required size, carefully follow the manufacturer's installation instruction to install hose.



(5) Important: After installation is complete, remove aerator. Turn water supply on and turn on handle to allow water to run at least one minute. While water is running, check for leaks. Turn off handle and replace aerator.

CBS045

Central Brass

COMPANY, Inc.

For more care information or trouble shooting inquiries about your Central Brass product, please call:
Central Brass Company, Inc. (800) 321-8630
Monday-Friday 8 AM to 8 PM EST (5 AM to 5 PM PST)
www.centralbrass.com