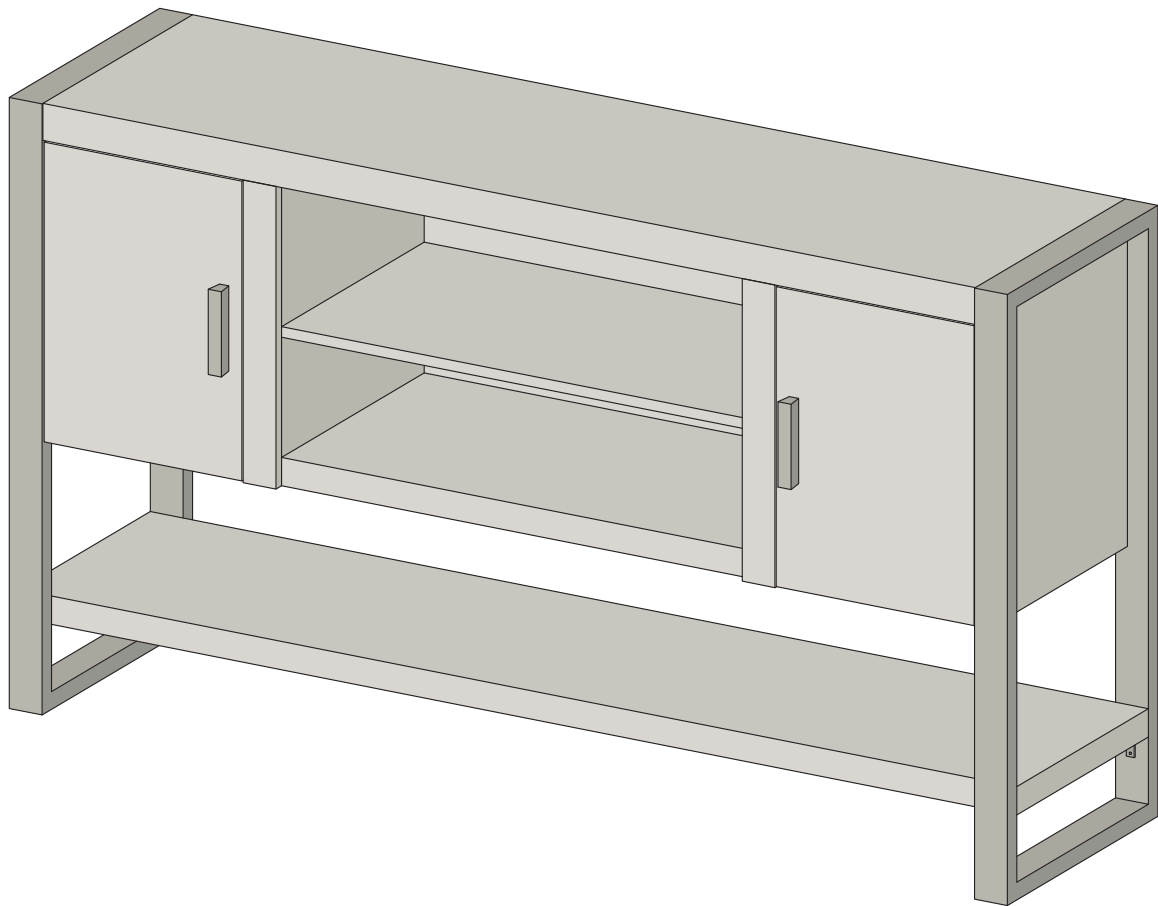




Item # :W60UBCT
Assembly Instructions

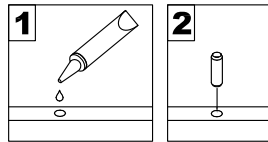


*Please visit our website for the most current instructions, assembly tips, report damage, or request parts. **www.walkeredison.com***

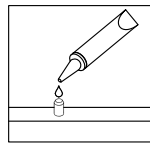
Revised 03/2017

General Assembly Guidelines

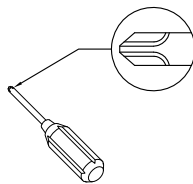
- I. Ensure that all parts and hardware are available before beginning assembly.
- II. Follow each step carefully to ensure the proper assembly of this product.
- III. Two people are recommended for ease in the assembly of this product.
- IV. The three main types of hardware used to assemble this product are : wood dowels , screws and bolts.
- V. The provided glue is to secure wood dowels in place . When first inserting dowels , locate the appropriate hole for the dowel , place a small amount of glue in the hole and insert the dowel . Wipe away excess glue immediately.



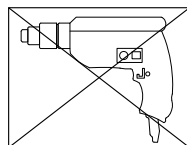
In future assembly steps when dowels are necessary to attach assembly parts together , place a small amount of glue on the end of the dowel before attaching parts together . Wipe away excess glue immediately.



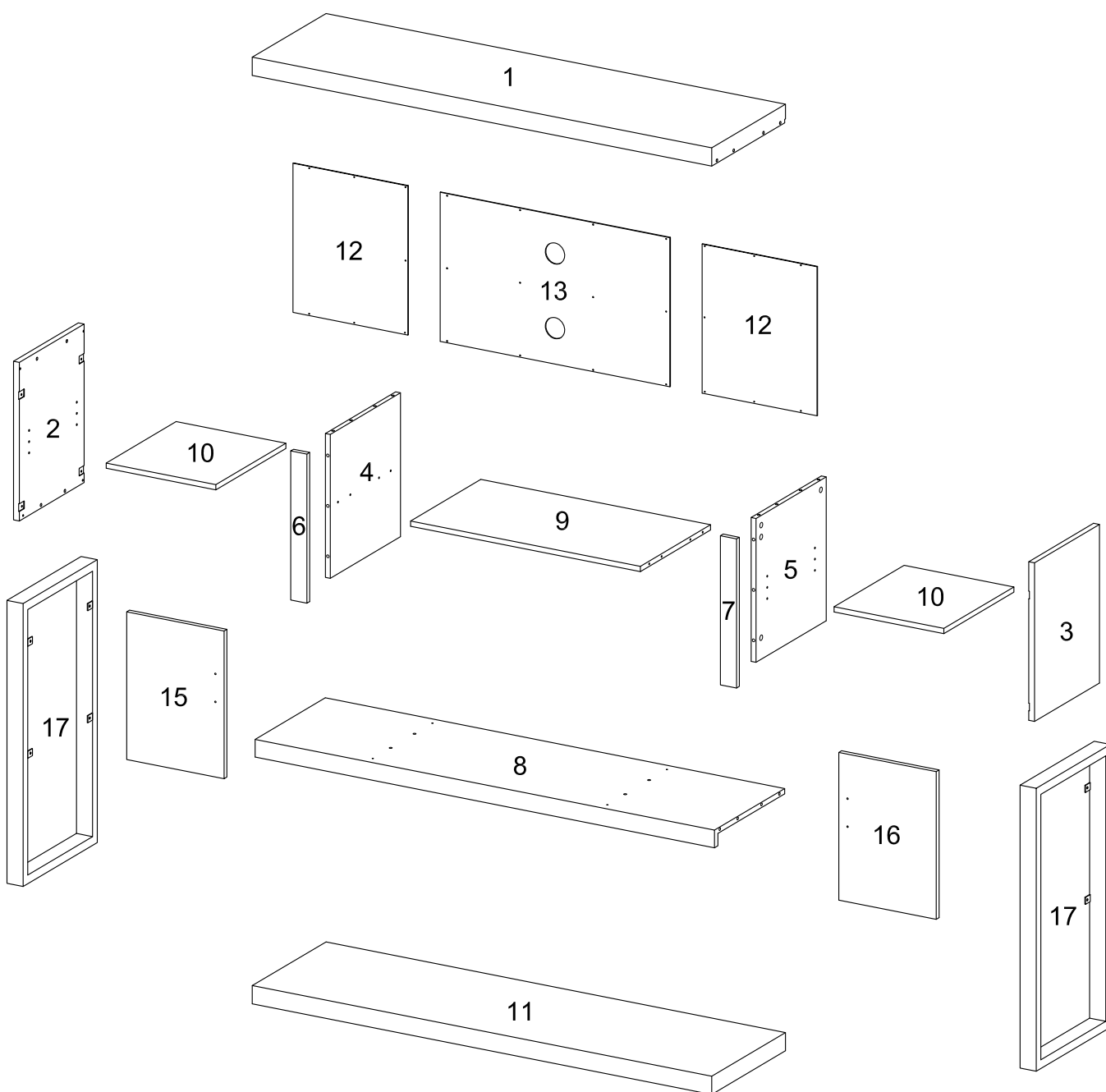
- VI. A Phillips head screwdriver is required for the assembly of this product .




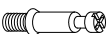

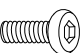
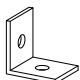
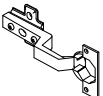




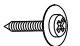



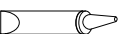

- VII. Power tools should not be used to assemble this product .

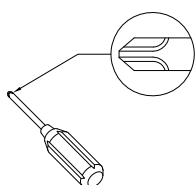


Parts List



Hardware List

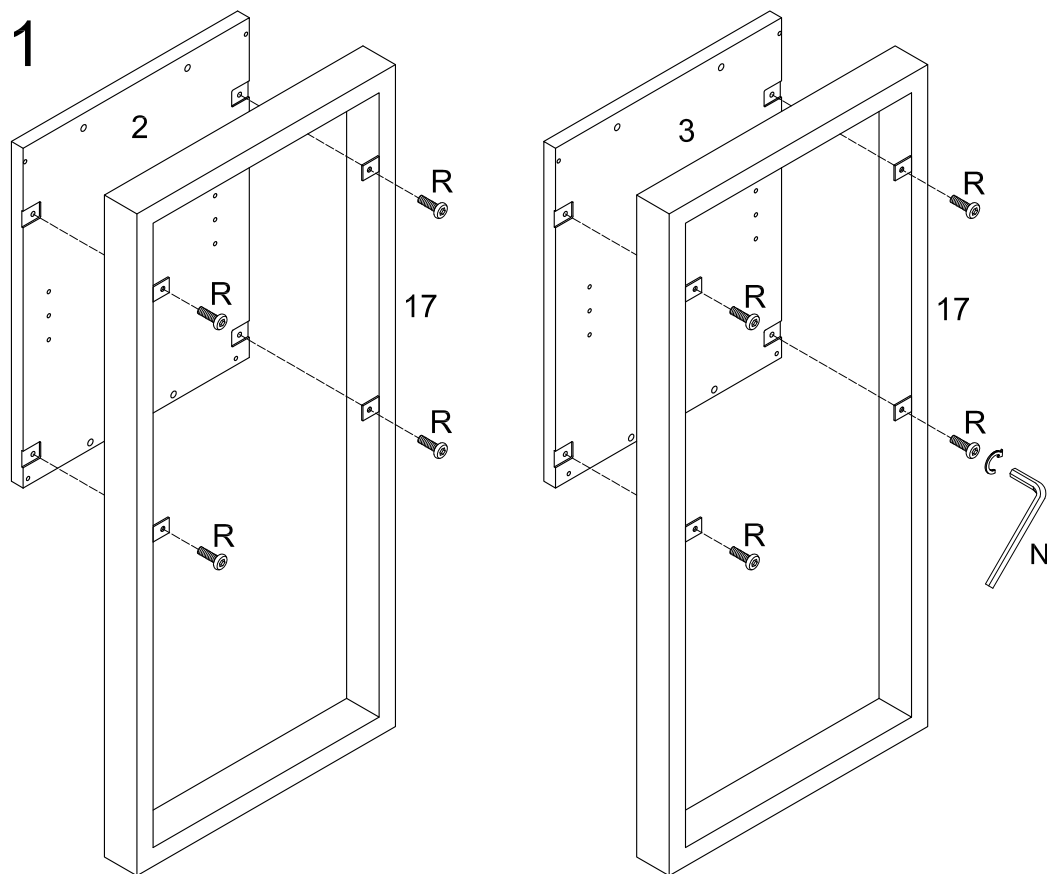
A		Ø8x30mm	Wooden dowel	22	pcs
B			Cam bolt	20	pcs
C		Ø15x11mm	Cam lock	20	pcs
D		Ø6*12	Bolt	8	pcs
E			L Shape Bracket	4	pcs
F			Hinge	4	pcs
G		Ø3x14mm	Screw	16	pcs
H			Handle	2	pcs
J		Ø4x22mm	Bolt	4	pcs
K		Ø8x5x16mm	Shelf support pin	8	pcs
L		Ø7x3x12mm	Screw	26	pcs
M		Ø6x50mm	Bolt	4	pcs
N		M4mm	Wrench	1	pc
P		Ø30mm	Sticker	20	pcs
Q			Glue tube	1	pc
S		Ø6x12mm	Bolt	8	pcs



Philips head screwdriver required for assembly
(not included)

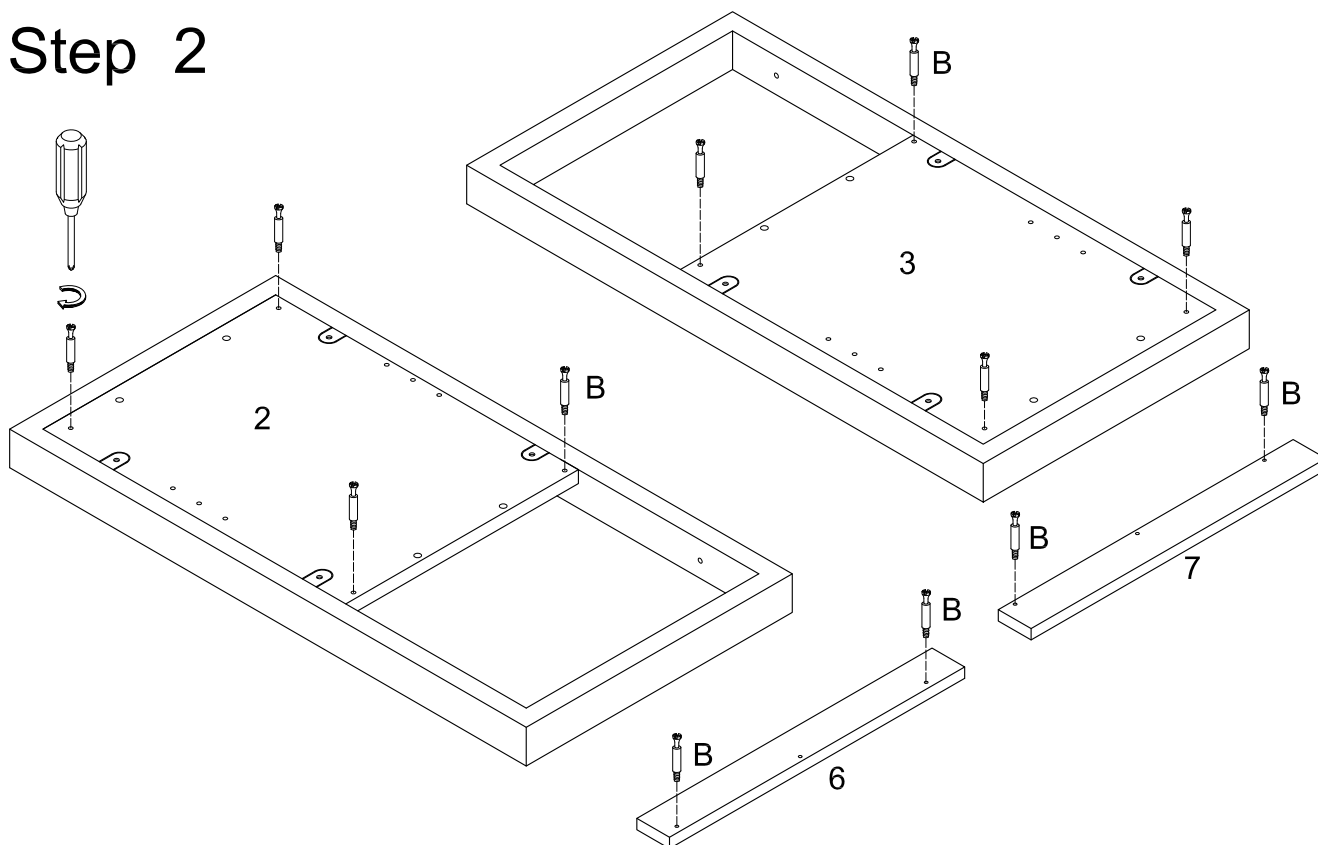
*The hardware quantities listed above are required for proper assembly.
Some extra hardware may also have been included.*

Step 1



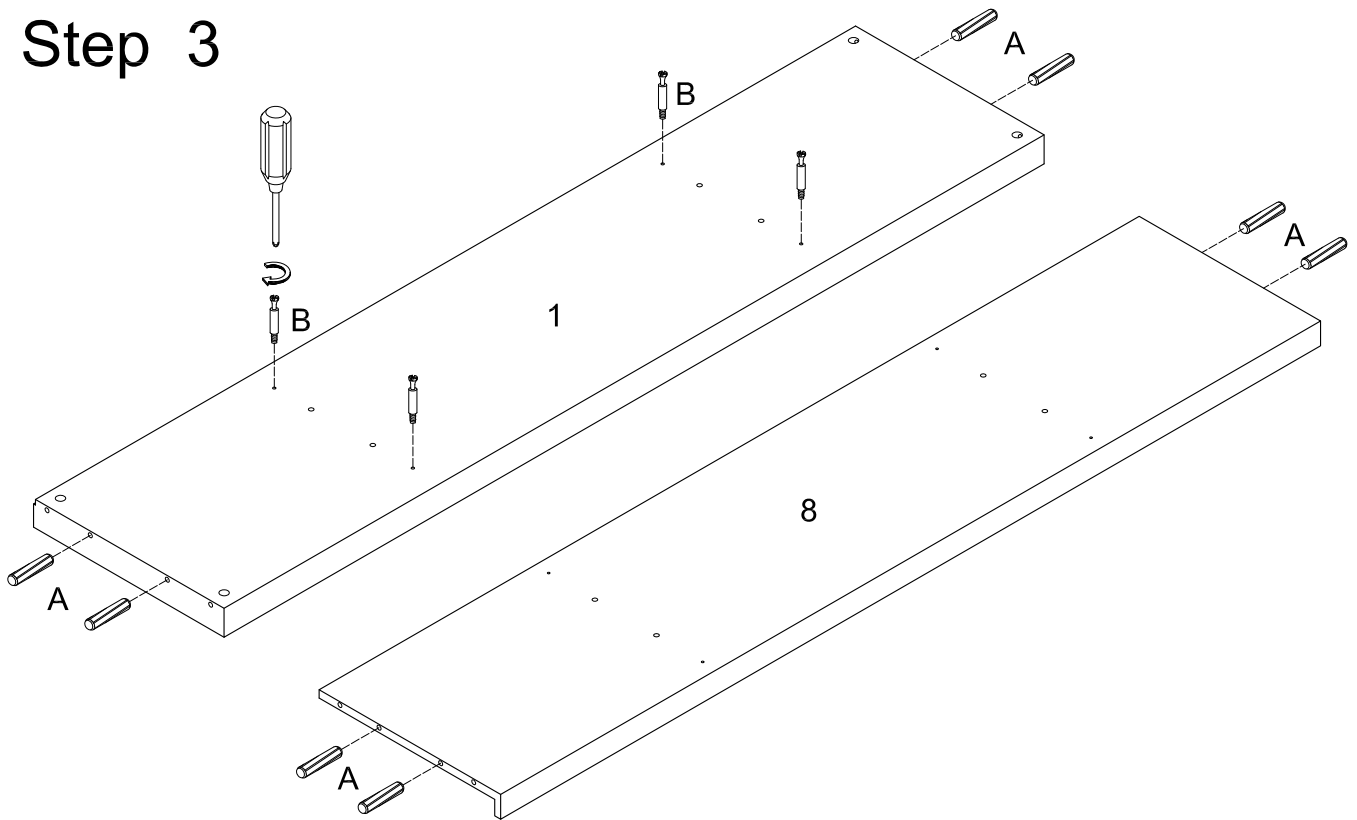
Use wrench (N), bolt (R) to secure the side frame (17) to the side panel (2,3).

Step 2



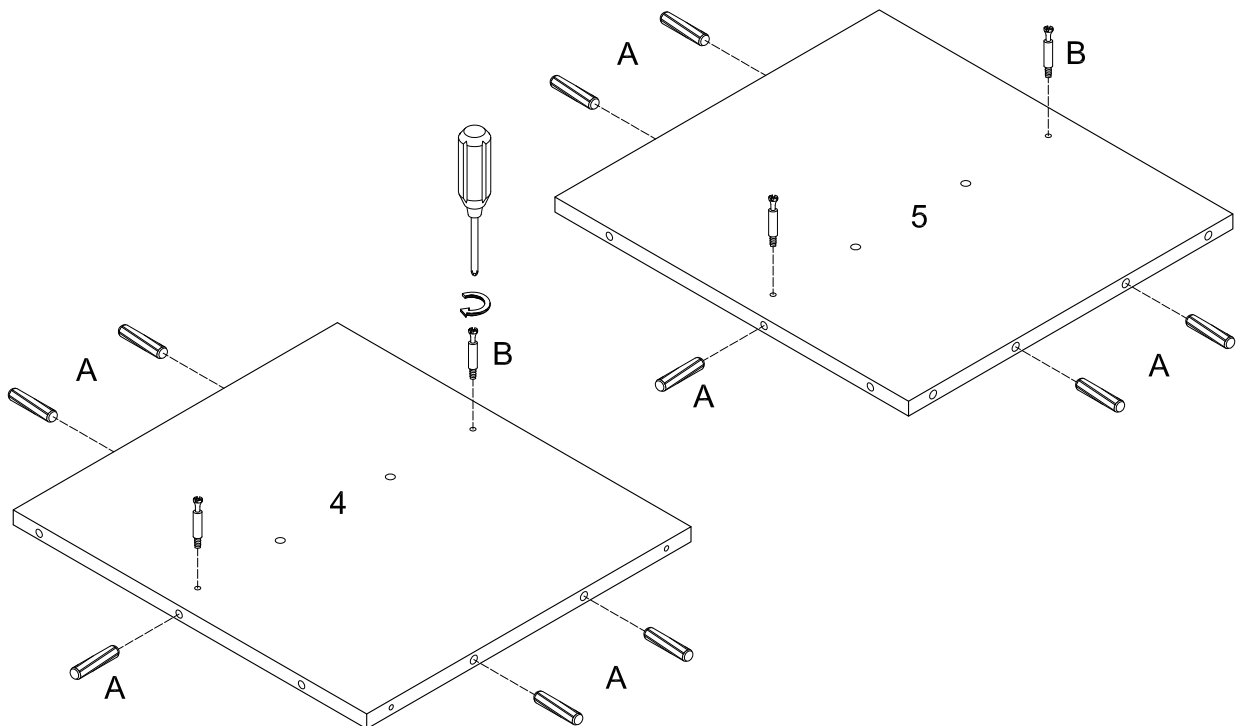
Secure cam bolts (B) into side frames (2, 3), and front panel (6,7).

Step 3



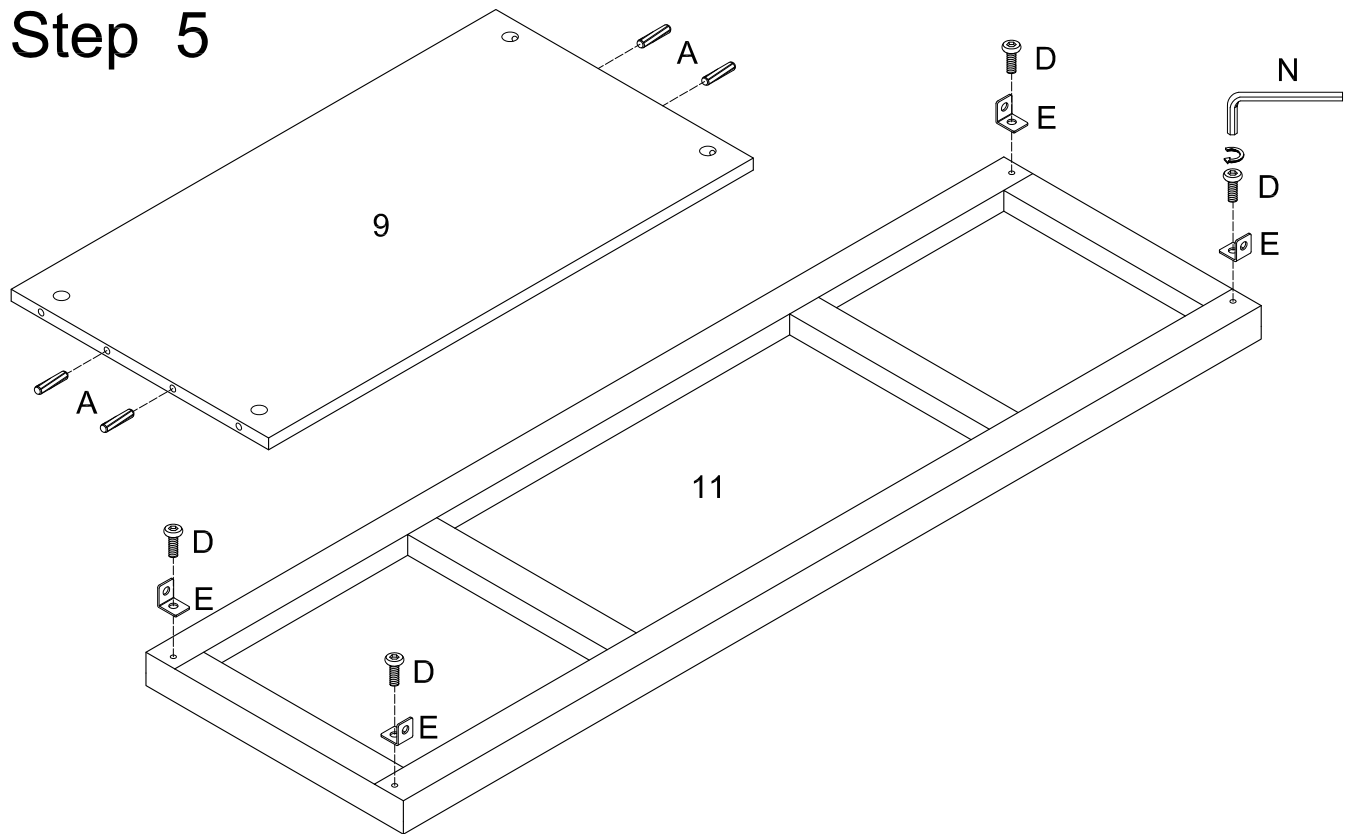
Secure cam bolts (B) into top panel (1). Insert wooden dowels (A) into top and bottom panels (1,8).

Step 4



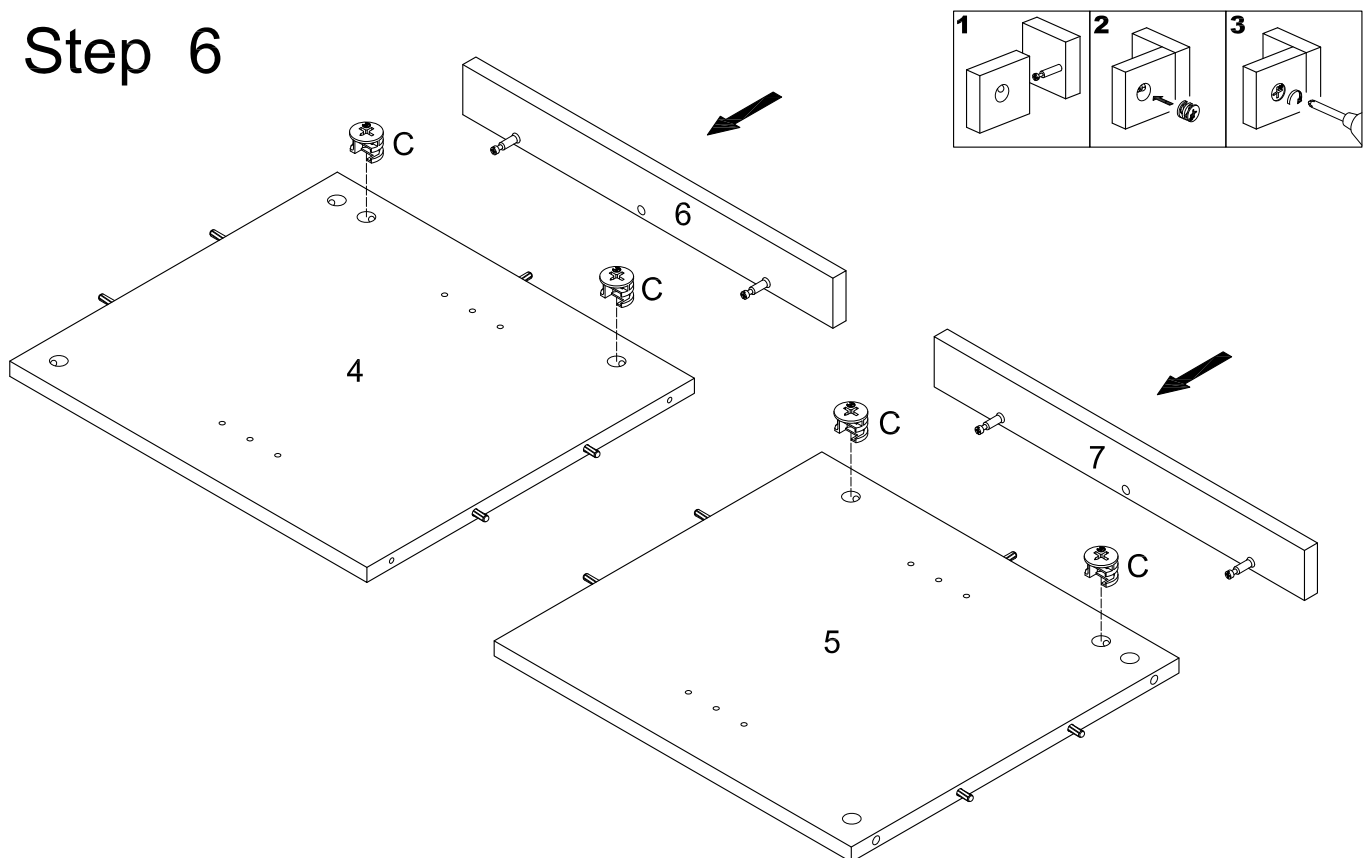
Insert wooden dowels (A) into side panel (4,5).

Step 5



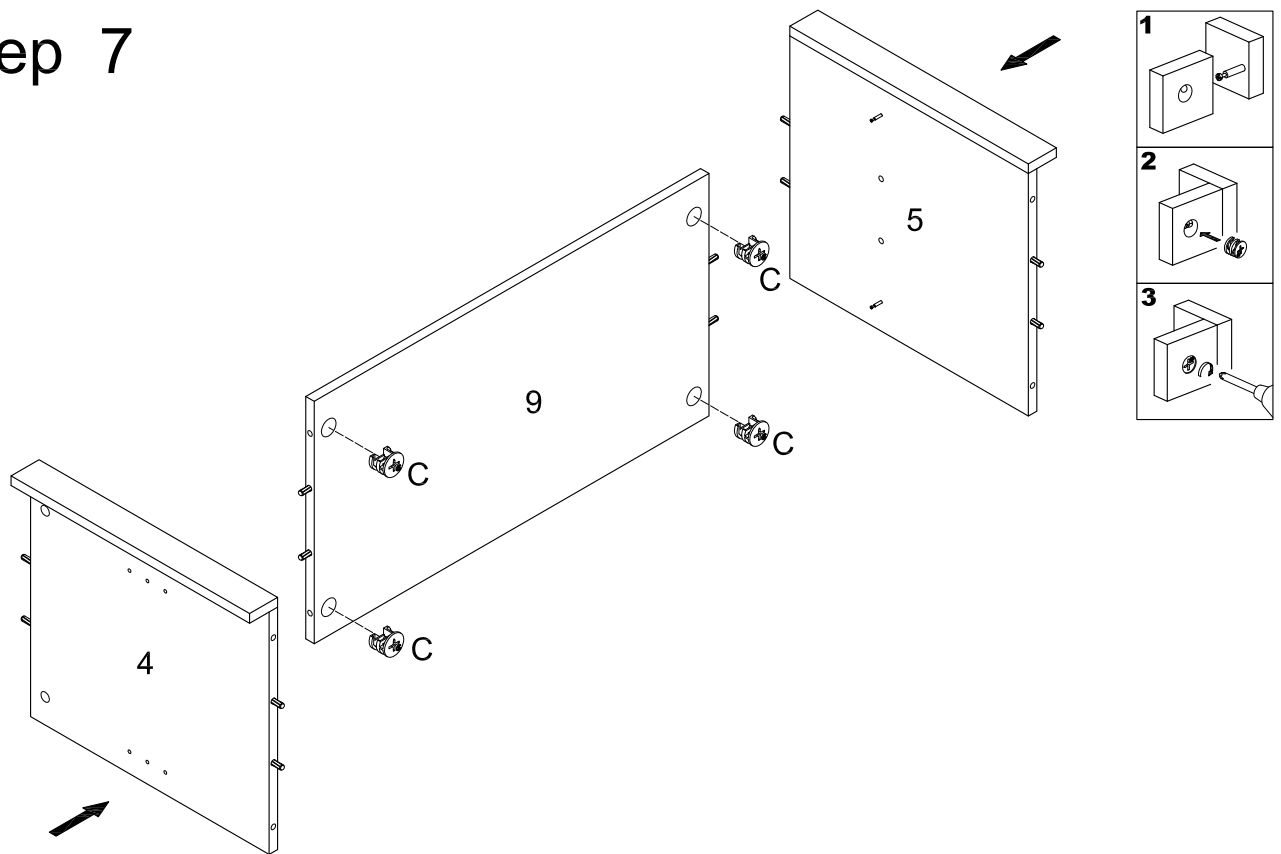
Insert wooden dowels (A) into panel (9). Use bolts (D) and wrench (N) to secure the L shape bracket (E) into shelf (11).

Step 6



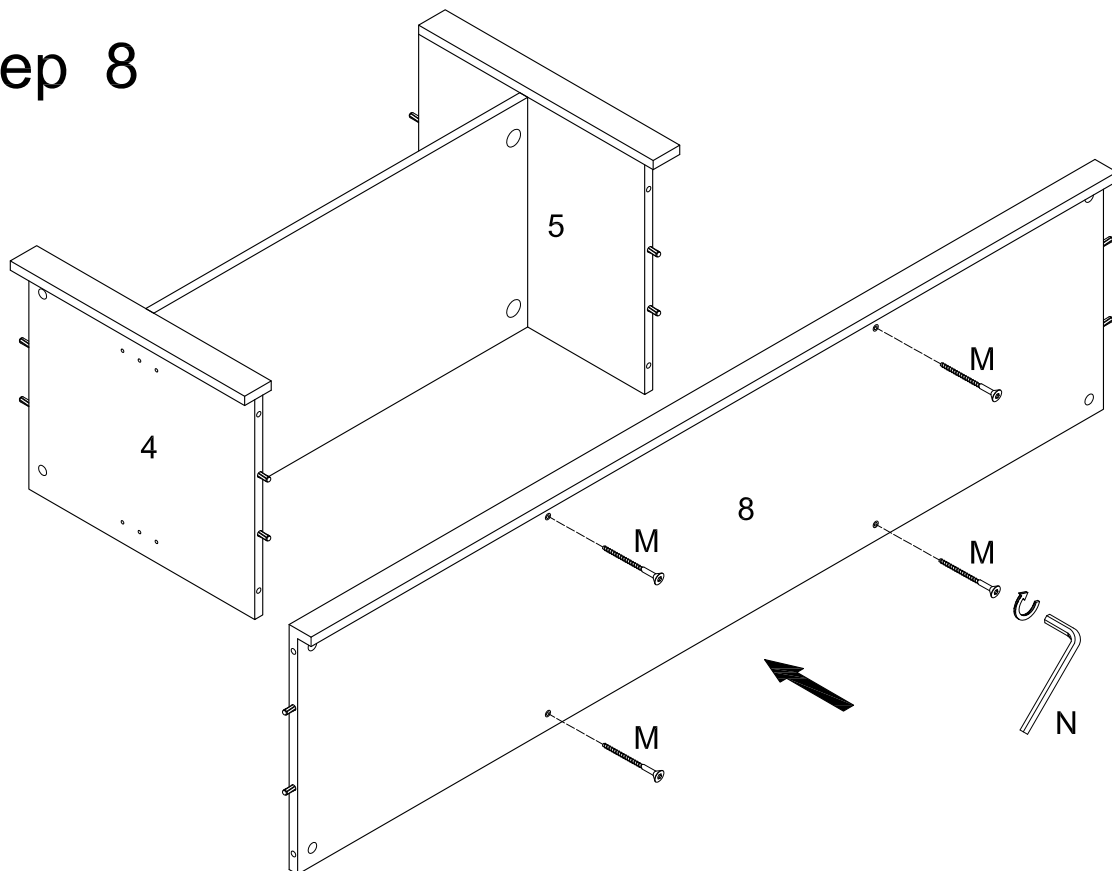
Attach panel (6) to panel (4) using cam locks (C). Attach panel (7) to panel (5) using cam locks (C).

Step 7



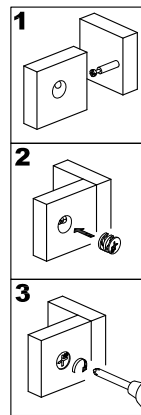
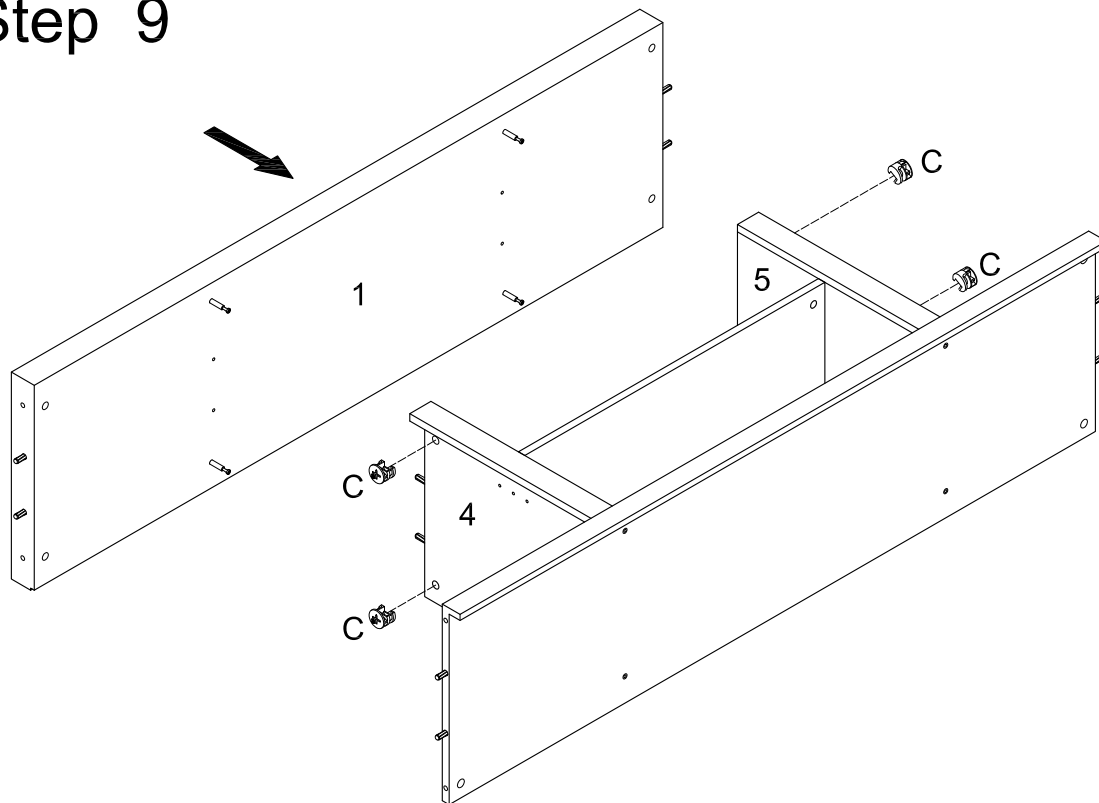
Attach side panels (4, 5) to shelf panel (9) using cam locks (C).

Step 8



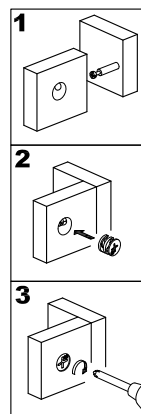
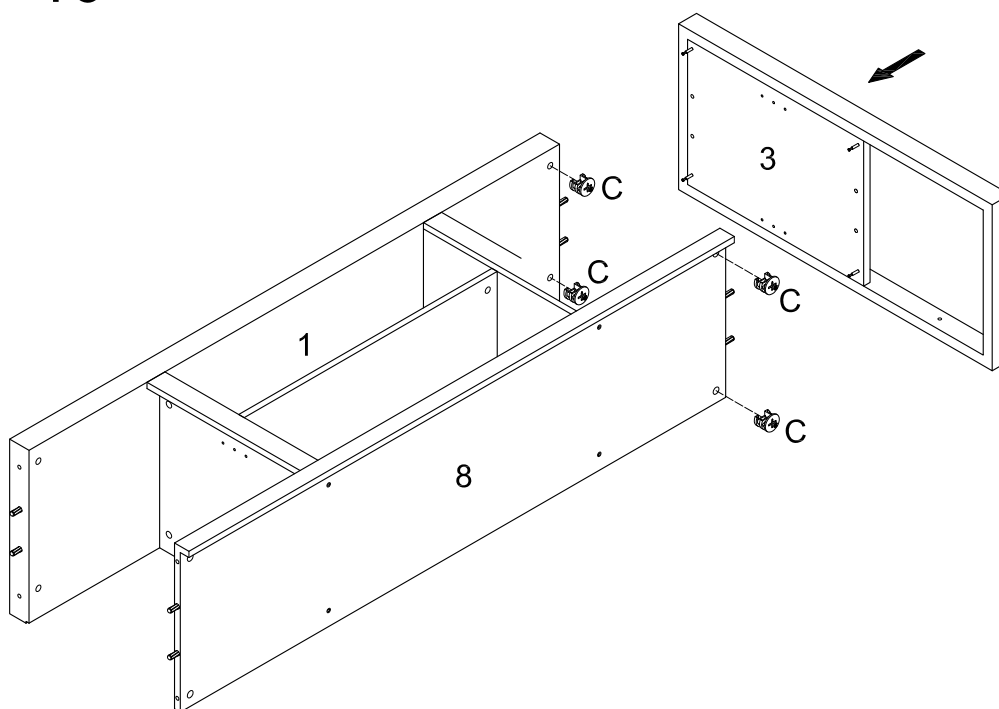
Attach side panels (4,5) into bottom panel (8) using screws (M) and wrench (N).

Step 9



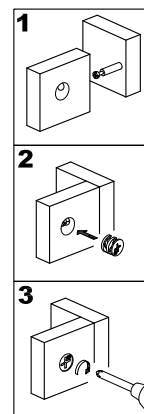
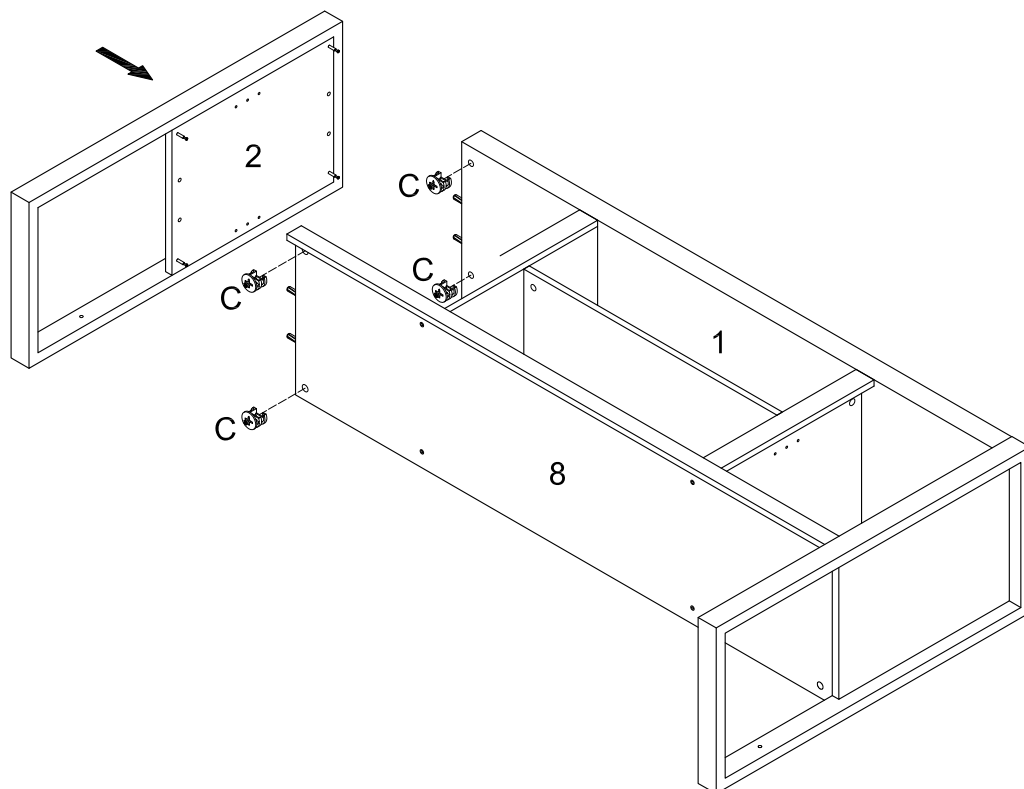
Attach top panel (1) into side panels (4,5) using cam locks (C).

Step 10



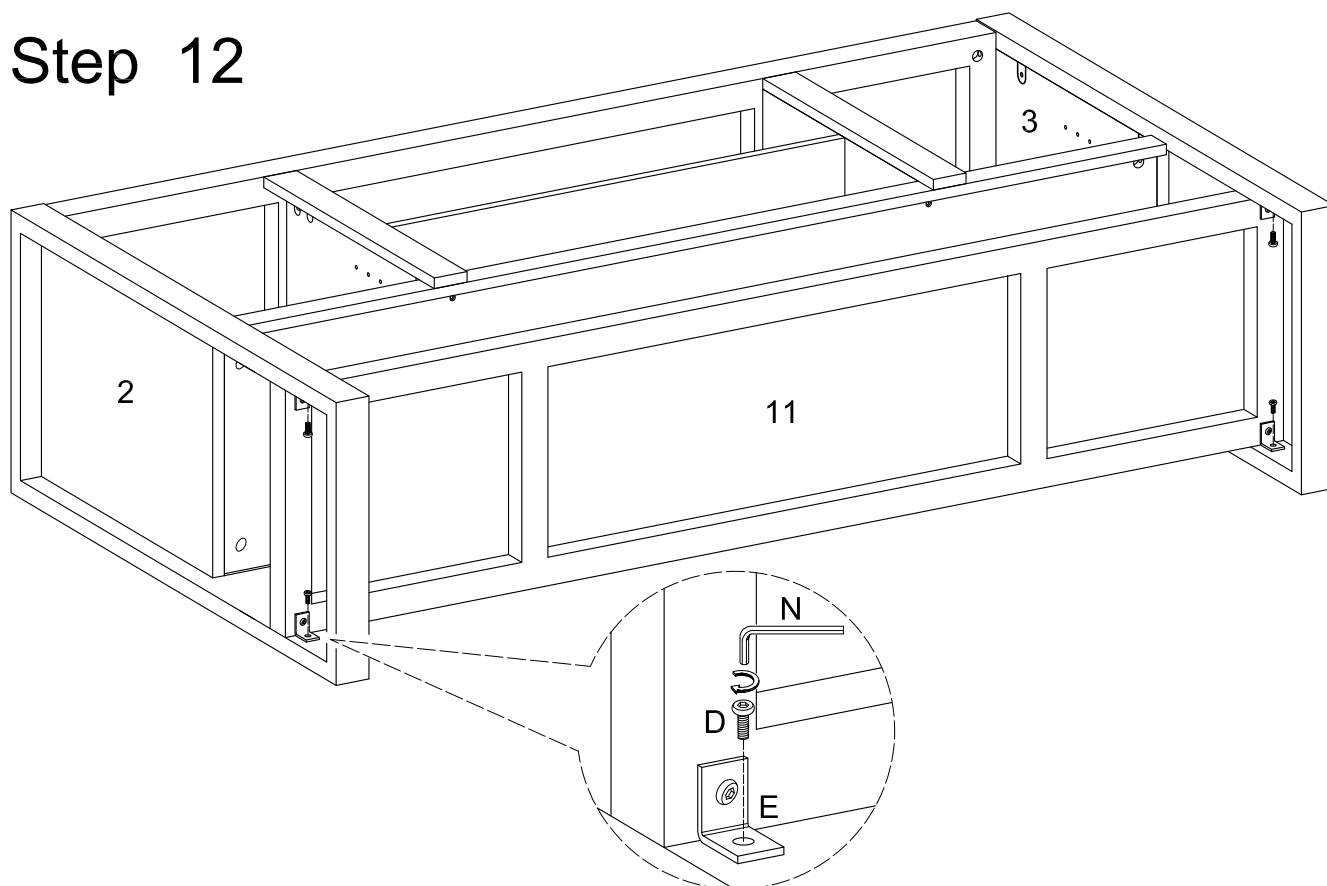
Attach side frames (3) to top and bottom panel (1,8) using cam locks (C).

Step 11



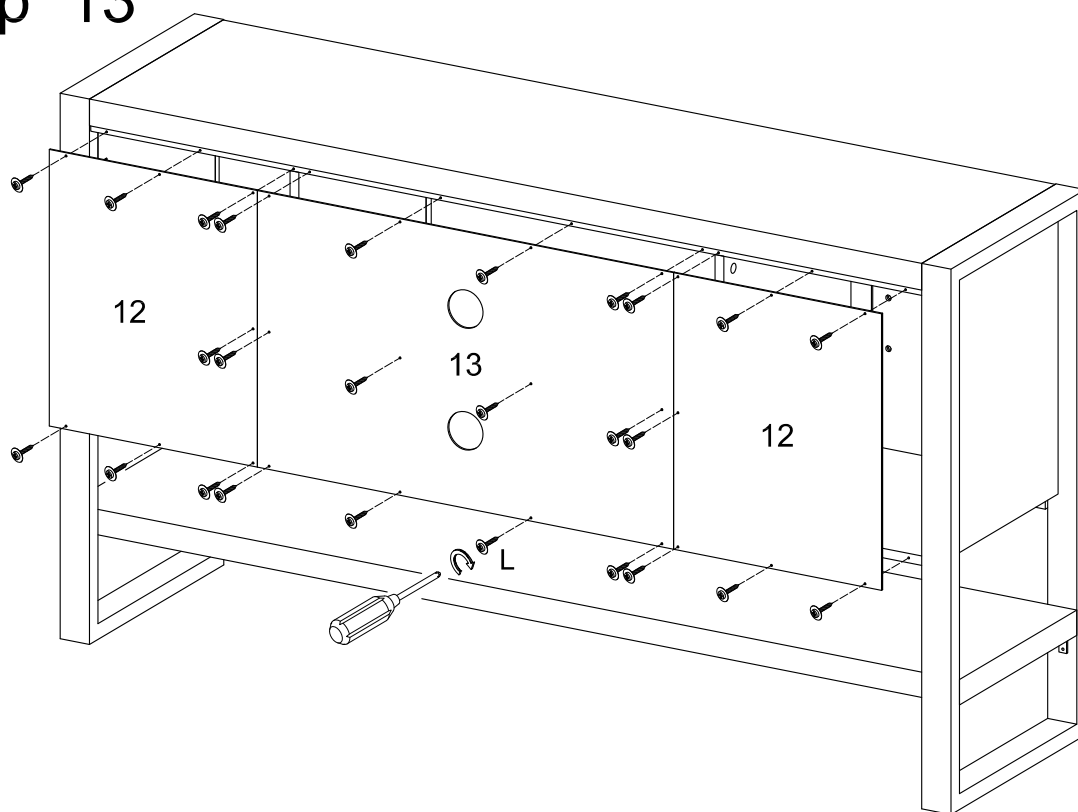
Attach side frames (2) to top and bottom panel (1,8) using cam locks (C).

Step 12



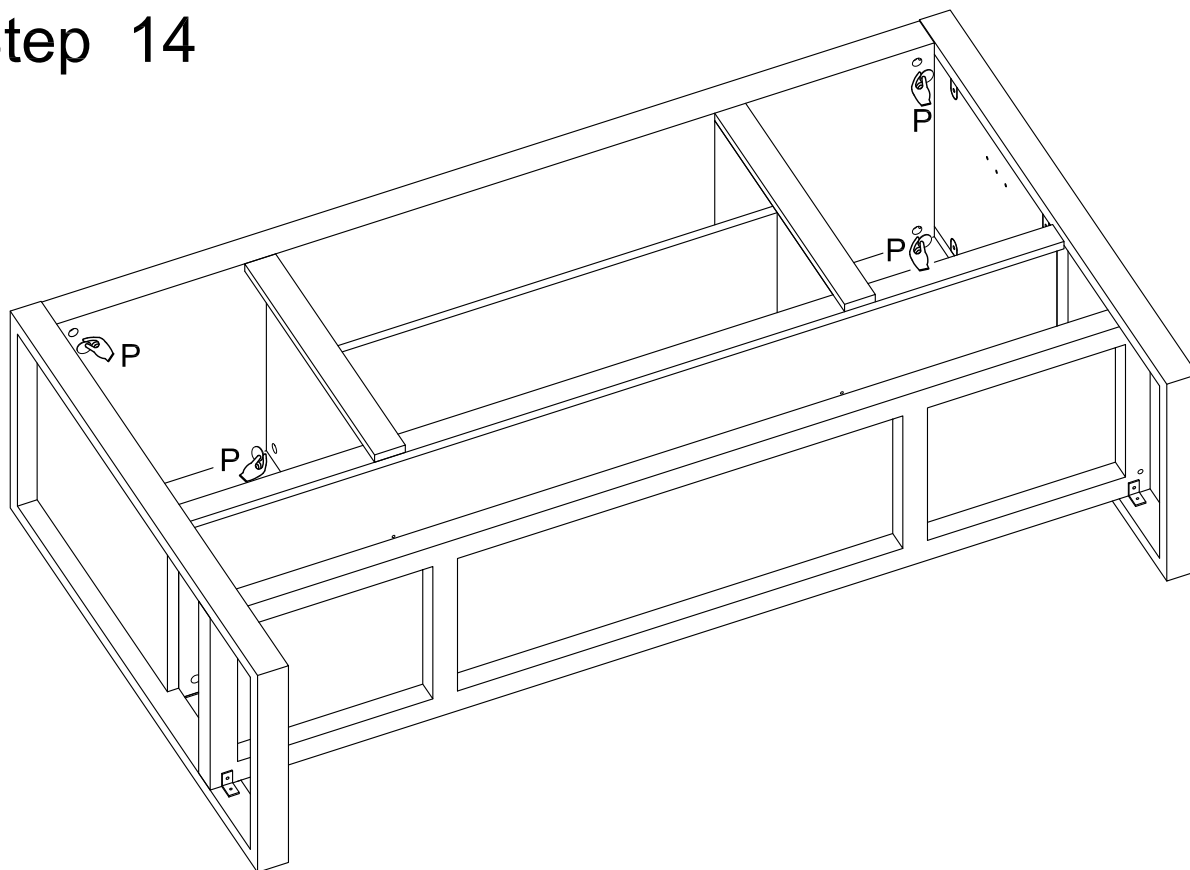
Use bolts (D) and wrench (N) to secure shelf (11) to the side frames (2,3).

Step 13



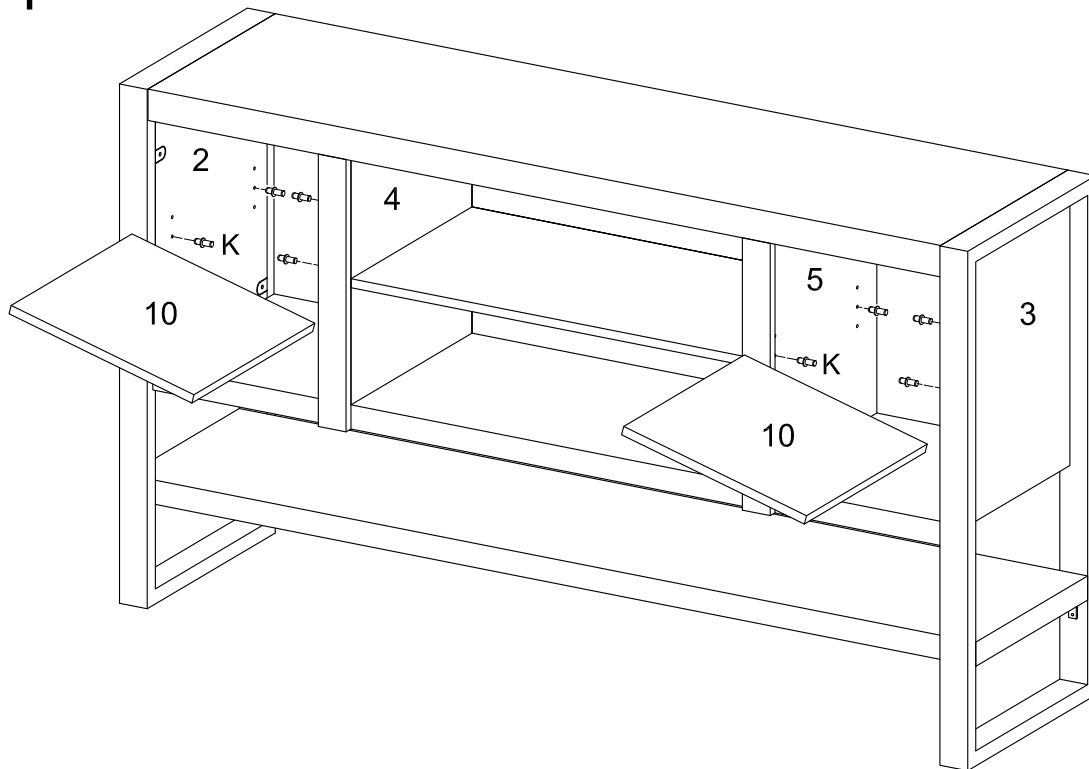
Secure back panels (12,13) using screws (L).

Step 14



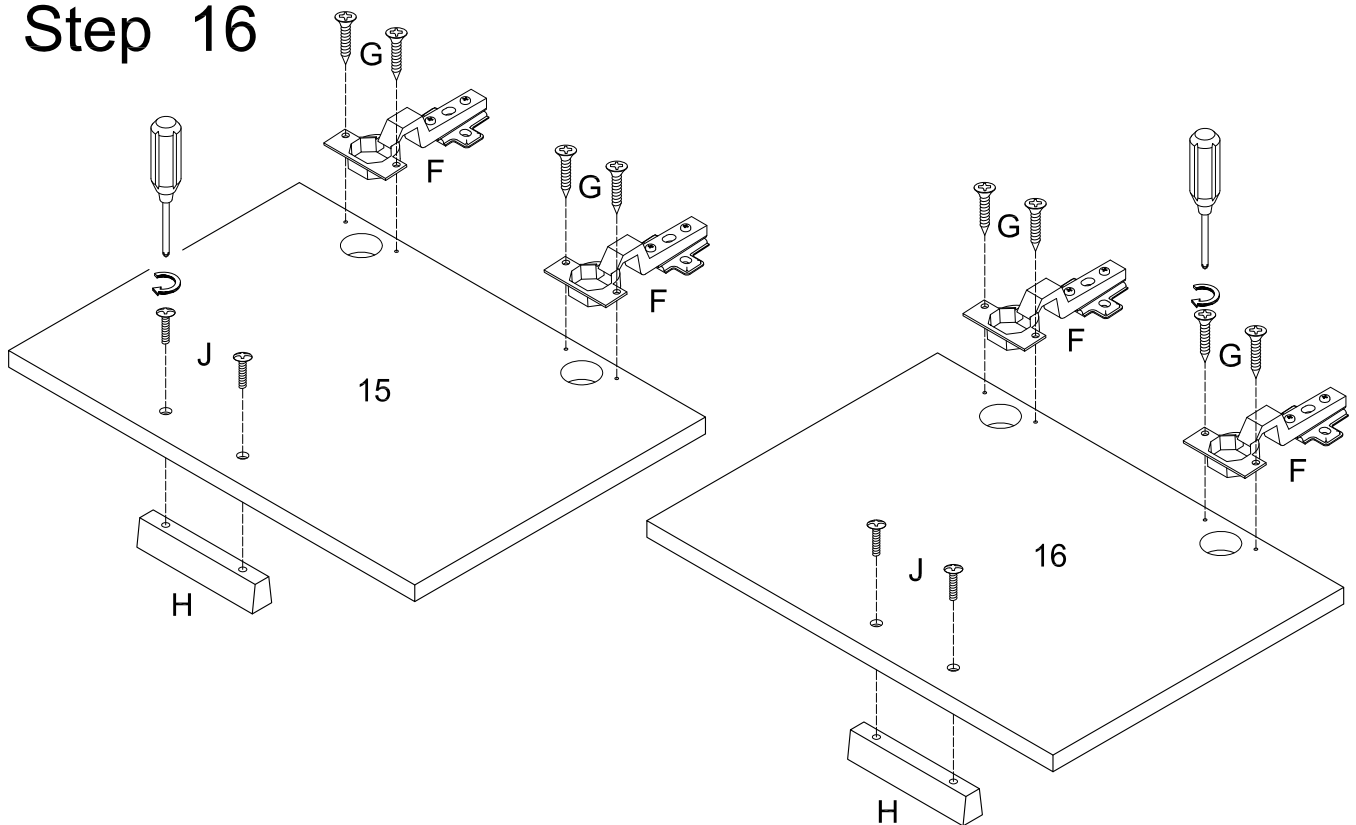
Cover all cam locks using stickers (P).

Step 15



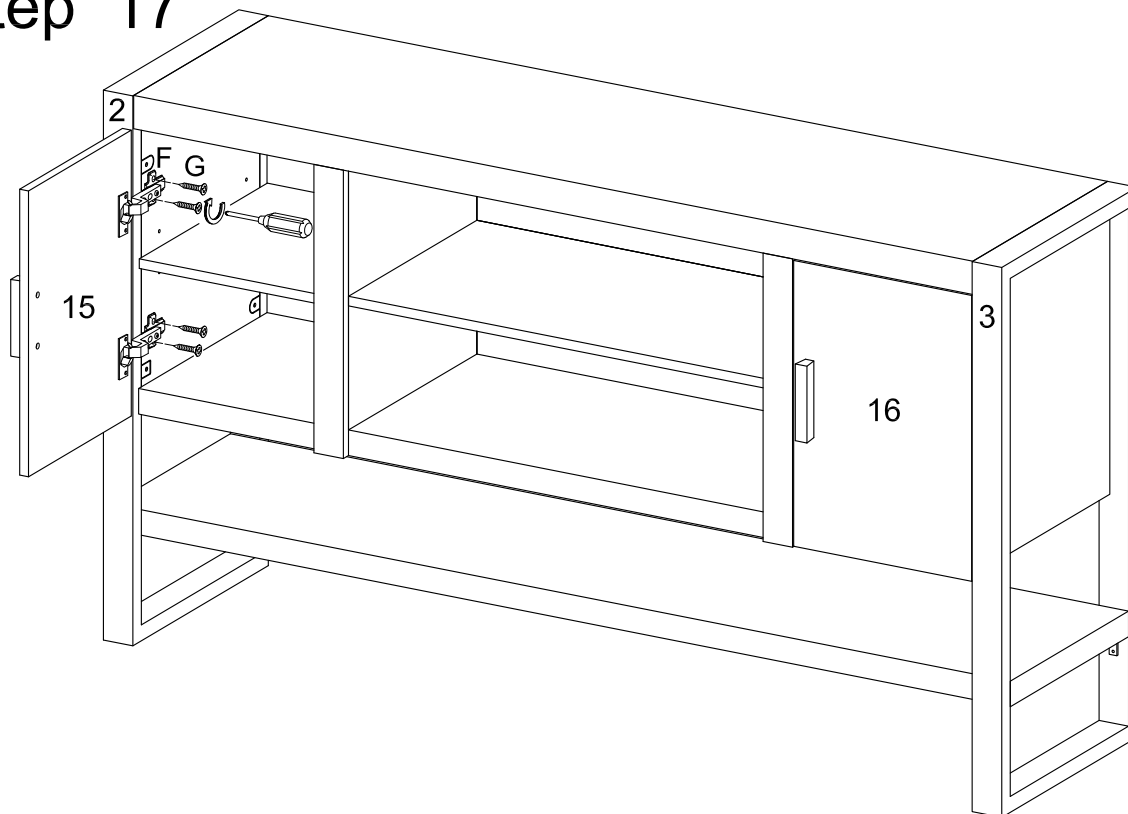
Insert shelf support pins (K) and carefully insert shelves (10).

Step 16



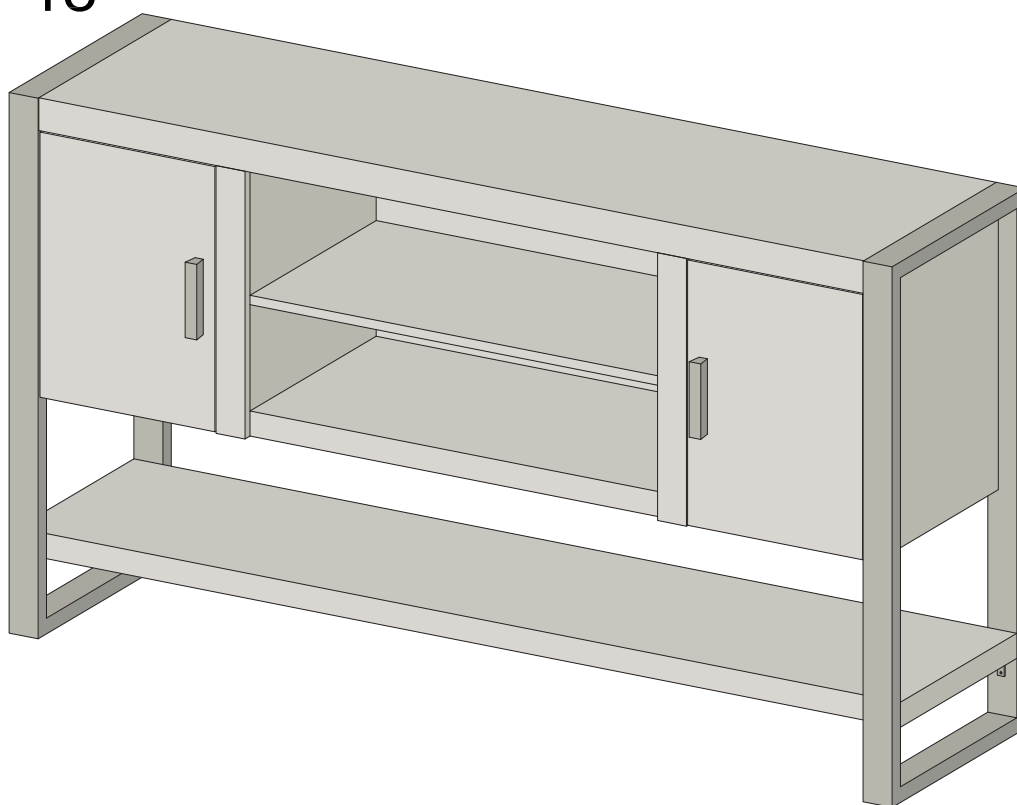
Attach hinge (F) to doors (15, 16) using screws (G). Attach handles (H) using bolts (J).

Step 17



Attach doors (15, 16) to assembled unit using screws (G).

Step 18



Final Assembly