

INSTALLATION INSTRUCTIONS

GENERAL INFORMATION

ATTENTION: READ THE INSTALLATION INSTRUCTIONS THOROUGHLY BEFORE MOUNTING

CAUTION-Turn off the main power at the circuit breaker before installing the fixture, in order to prevent possible shock.

Remove the fixture and the mounting package from the box and make sure that no parts are missing.

Professional installation recommended.

HANGING THE FIXTURE (Fig.1)

1. Shut the power at the circuit breaker and if necessary remove old fixture including crossbar.
2. Thread nipple into loop until snug.
3. Thread other end of nipple with loop attached into crossbar until snug.
4. Place lock washer over end of nipple protruding through crossbar and thread hex nut onto nipple until tight.
5. Take this crossbar assembly and mount to ceiling junction box with junction box screws. Tighten screws securely with screw driver.
6. Measure the correct number of chain links needed for proper hanging height. Use a pair of pliers to open the chain link located at the determined length and remove excess chain. Leave the chain link open to hang the fixture.
7. Attach the chain to fixture's loop using the threaded quick link from other end of chain. Carefully slip loop ring followed by the canopy over the chain.
8. Raise entire fixture and attach open link to ceiling loop. Close chain link.
9. Lace the fixture's wires through the chain links and pull until taut. Feed wires through the loop and nipple and pull until taut. Remove excess wire.

CONNECTING THE WIRES (Fig.2)

1. Connect the electrical wires as shown in Fig 2.making sure that all wire connectors are secured. If your outlet has a ground wire (green or bare copper), connect the fixture's ground wire to it. If not, connect the fixture's ground wire directly to the green screw attached to the crossbar.
2. Tuck the wire connections neatly into the ceiling junction box and then raise the canopy over the loop and all the way to the ceiling. Raise the loop ring and thread it onto the loop protruding through the canopy.
3. Install the light bulbs in accordance with the fixture's specifications.(DO NOT EXCEED THE MAXIMUM WATTAGE!)

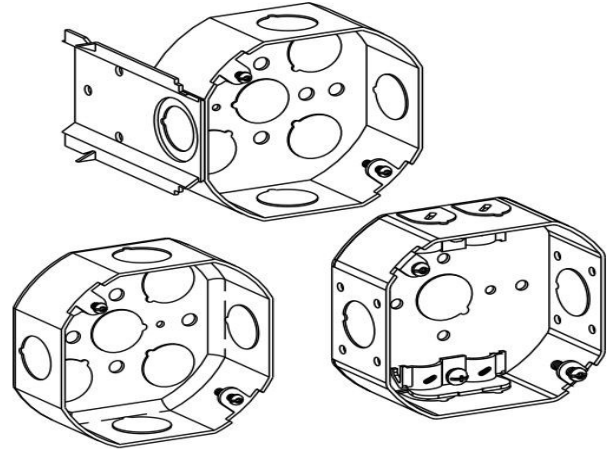


Fig.1

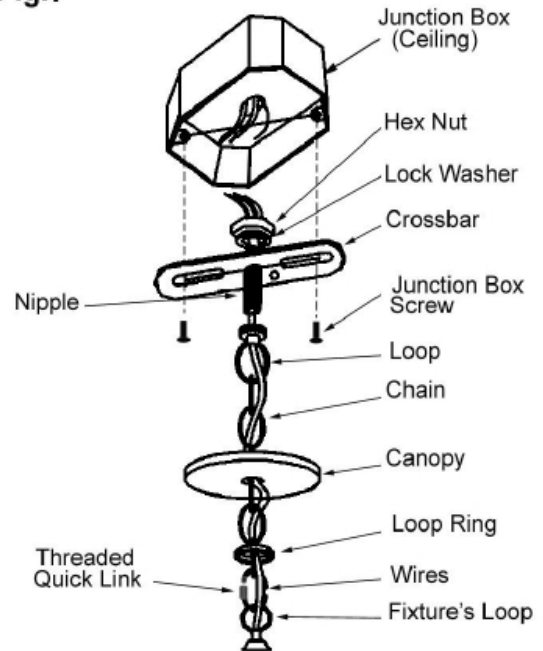
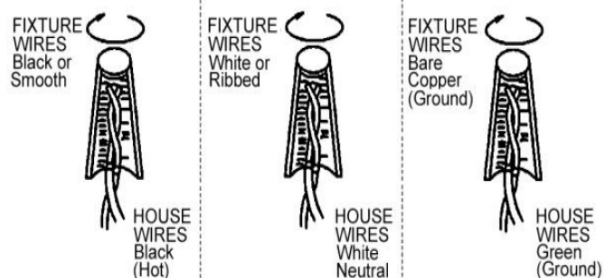
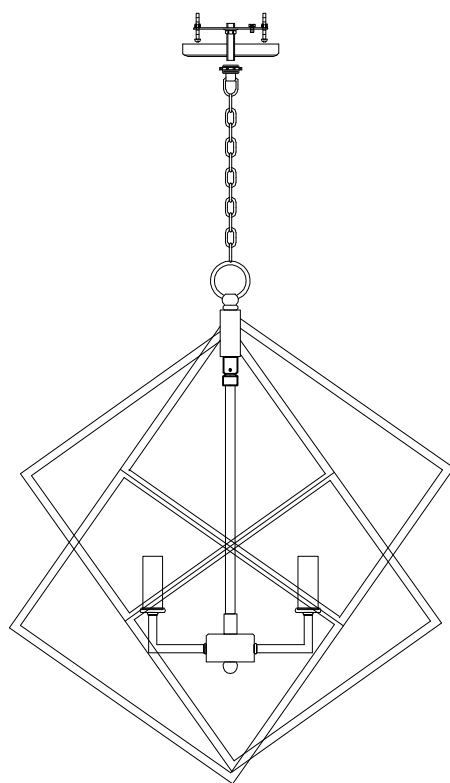


Fig.2



Your installation is now complete. Return power to the junction box. Enjoy your new fixture!

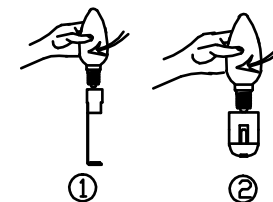


BILT005AG

Cautions of installation

Install the bulbs

Hold the bulb firmly
(you should not touch the
hardware part in case of
electric shock) and then install
it clockwise till it is firm.



-
- 1. Open the carton and check the lamp, if there are something wrong, please contact the seller.**
 - 2. Install the lamp according to the illustration.**
-

