

Solar LED Flood Light Specification



Product Name	Solar LED Flood Light with Sensor
Specification	EE-LD-SFL-5W
Date	09/01/2021
Version	REV 1.0



Features & Advantages

- Global patent design, light panel is flexibly folded, slim as a PAD.
- Solar panel and light panel are integrated flexible, new leading in the whole industry!
- Bracket 360°adjustable, light panel 135°adjustable, fully realize your perspective of different lighting requirement.
- One sensor inductive, wider detection angle, higher sensitivity.
- Adopt optical Lens optimize light, not only make the light more brighter and also Anti-UV.
- Two working modes for different application in different seasons.
- High quality mono-crystalline silicon solar panel, high conversion solar photo electricity, high energy trans-action rate.
- High performance lithium battery 3000mAh, bigger capacity brings longer lifespan.

Product Image



① Foldable



② Adjustable



③ Standable

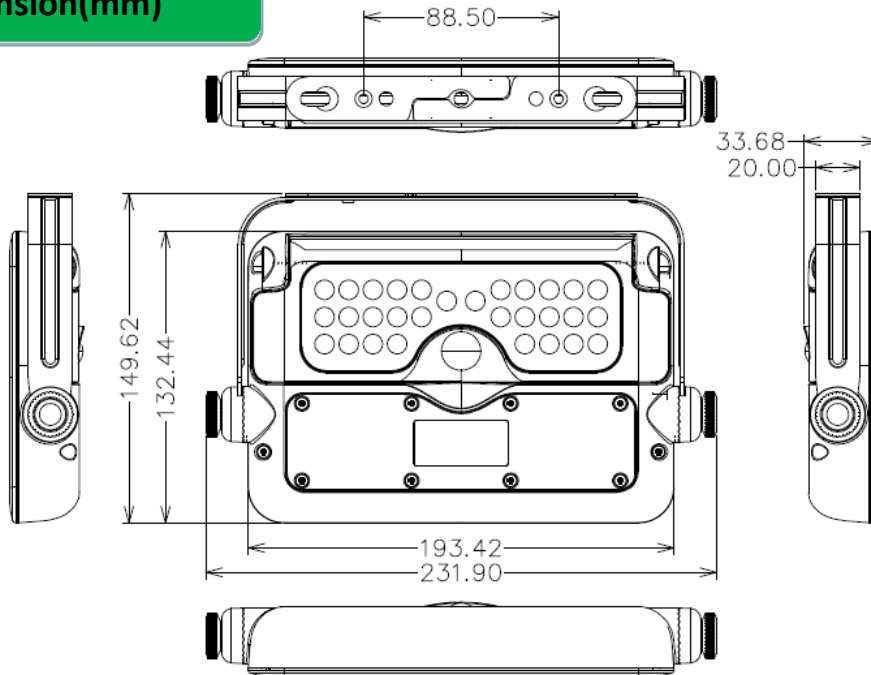


④ Portable



⑤ Hanging

Dimension(mm)



Specifications

Product Model	LD-SFL-5W-Leadpad	Overall Dimension	231.9*149.62*33.68mm
Power	5W	Lumen	500LM
Solar Panel	2.3Wp Mono-crystalline silicon	Li-ion Battery	18650/3000mAH/3.7V Replaceable
Charging Time	6Hrs/Day	Working Time	2 different working modes
LED Type	SMD 2835*30pcs	PIR sensor Range	Detection angle: 120° Detection area: ≤6M
Surface Color	Black	Beam angle	90°
IP Class	IP65	Working Temp	-15C° - 50C°
Housing Material	ABS+PC	Warranty	24 months (battery warranty 12 months)

Two Working Modes:

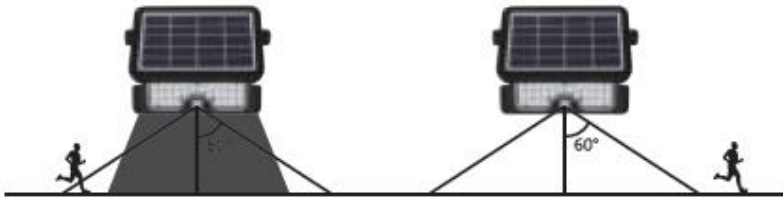
please press the button to adjust to the demanded working mode.



Sensor Mode



When battery capacity above >30%
Automatically turns on to full brightness
when motion is detected in the range
 $\leq 6\text{mtrs}$, then dim to weak brightness
in 20 seconds of no motion.



When battery capacity below <30%
Automatically turns on to full brightness
when motion is detected in the range
 $\leq 6\text{mtrs}$, then turns off in 20 seconds of
no motion.

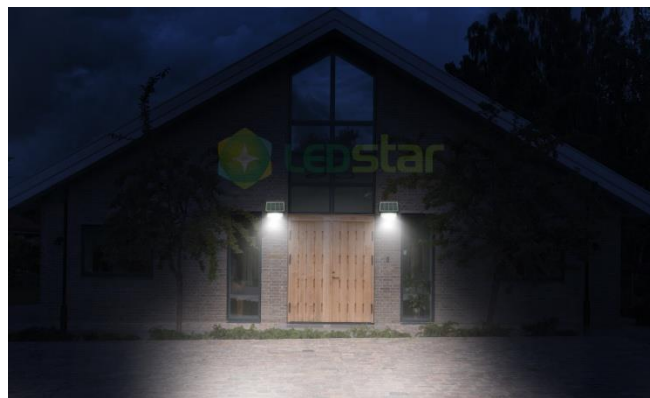
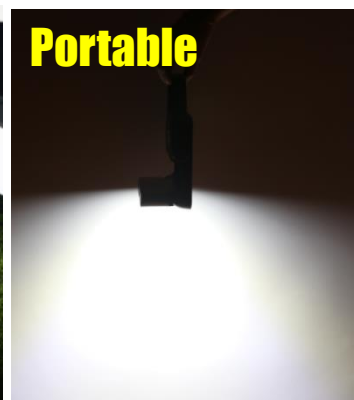
Constant Lighting Mode



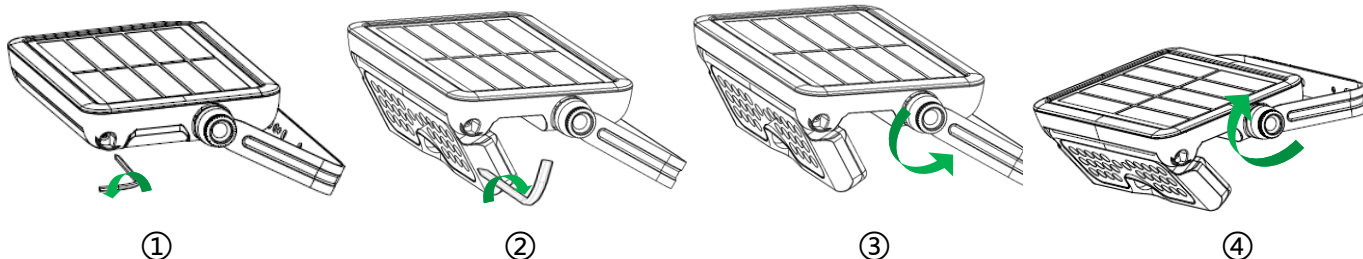
Press the button for 3 seconds and shining
one time, lamp turns to constant lighting
mode, both motion and light sensors
disabled. Permanently keep lighting
until the battery capacity reduces to zero
switching back to Sensor Mode.

Applications

All the area inconvenient in electricity but full of sunshine, such as gardens, billboard, buildings, parking lot, entrance, courtyard, road, street, hotel etc.



Installations



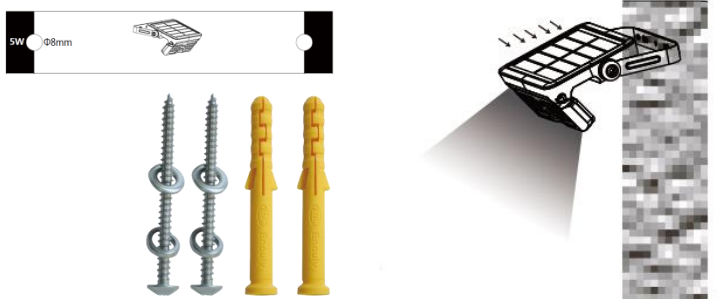
1. Prepare lamp, accessories and tools well firstly.

2. Use Allen wrench to loosen the light panel and adjust it to the demanded lighting angle(see picture①), then fix the screw tightly(see picture ②).
3. Rotating the screw to loosen the bracket (see picture ③) , adjust it to the appropriate angle and then fix the screw tightly(see picture ④).

Installation A: Wall mounted

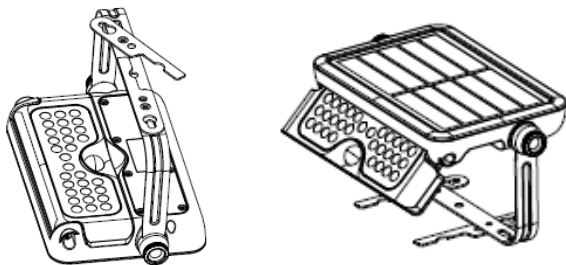
Please use the measure card to drill 2 holes of $\Phi 8\text{mm}$ with a spacing of 132.5mm, then fix the lamp onto the wall with expansion plugs and screws.

* The recommended mounting height is 2-4Mtrs.



Installation B: Put on flat surface directly

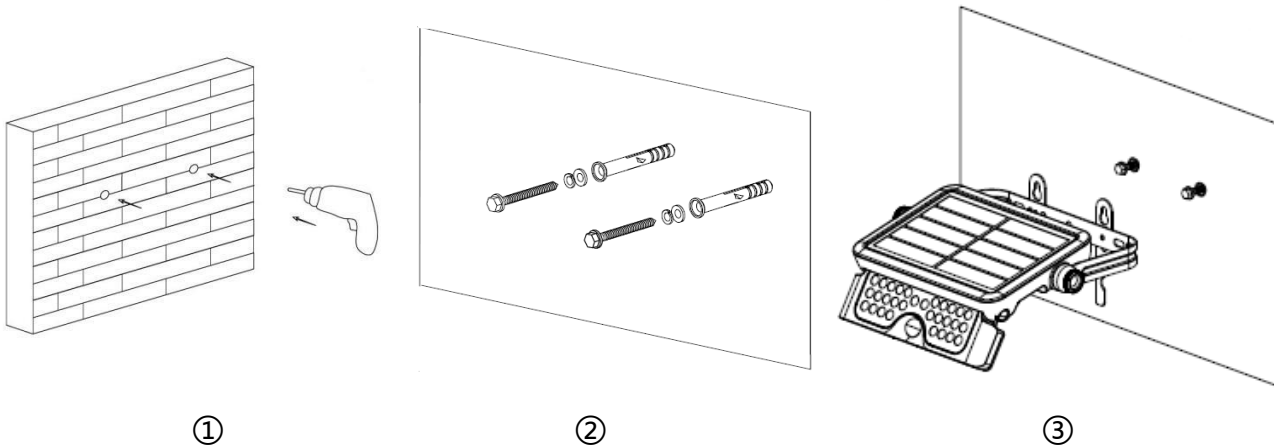
Push aside the stand bracket and put it on a flat surface.



Installation C: Hanging on the wall

- ① Please drill 2 holes of $\Phi 8\text{mm}$ on the wall with a spacing of 88.5mm. (see picture ①)
- ② Fix the expansion plugs and screws into the holes with a spare space(do not lock the bottom).
(See picture ②)
- ③ Push aside the stand bracket, align the hanging holes to the screws and hang the lamp on the wall.
(see picture ③)

* The recommended hanging height is less than 2Mtrs.



Remark

1. This is a solar powered lamp, please install it in a location where can get enough sunshine.
2. Please note the lighting time depends on sunshine duration & weather.
3. The lamp will light up automatically at dusk in Sensor Mode.
4. Built-in intelligent IC is with over-charge, over-discharge and over-voltage protection.
5. The lamp is equipped with an internal battery pack, which is replaceable.
If any need, please contact seller for correct new battery pack.
6. If the battery is taken out and put back in or replaced with new ones, please toward the solar panel to
sunshine or a strong light to activate the lamp.
7. Non-professionals please do not disassemble the lamp.
8. Please do not dispose the battery with household garbage to avoid explosion.