

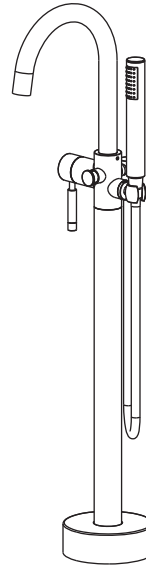
MODEL 7550-Contemporary Free Standing Tub Filler with Hand Shower

Before Your Installation

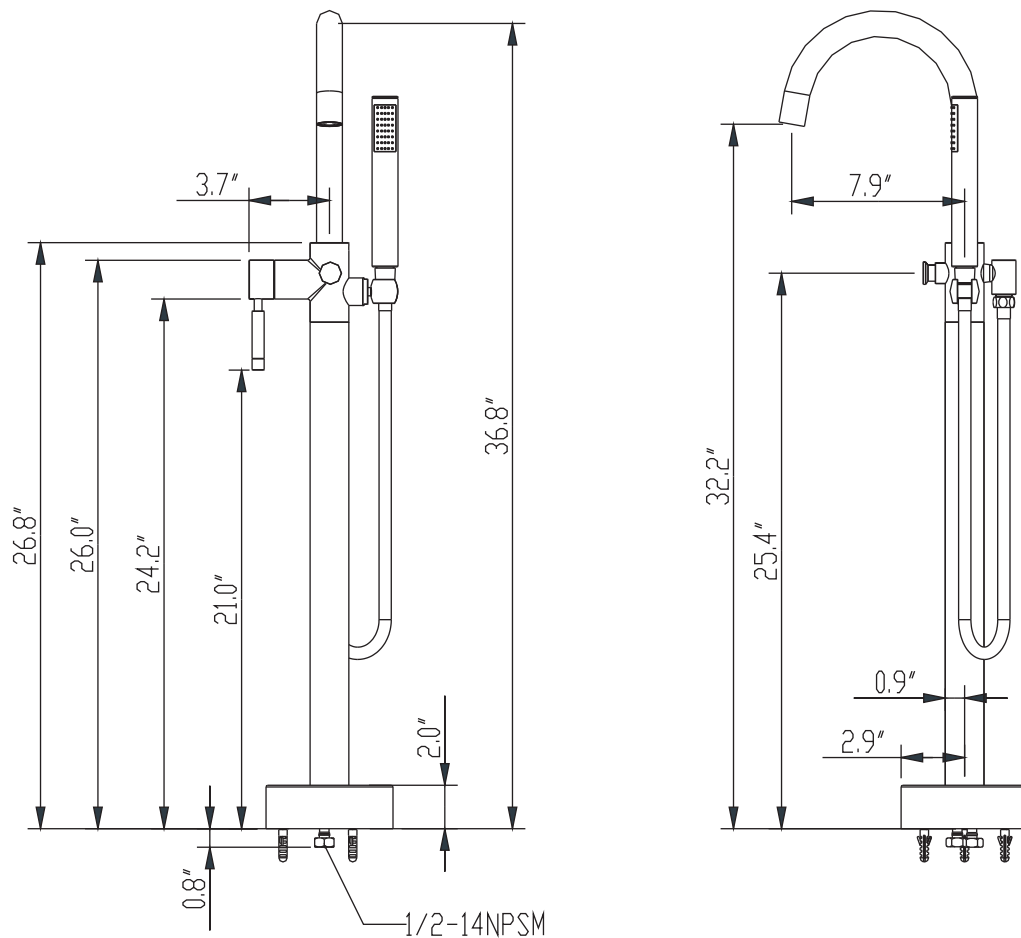
- Read all instructions carefully.
- Assemble all tools.
- Turn off main water supply before removing old faucet and fixtures.
- Clean surface before installing new faucet.
- Insert a cloth or stopper into drain to prevent small parts from getting lost.

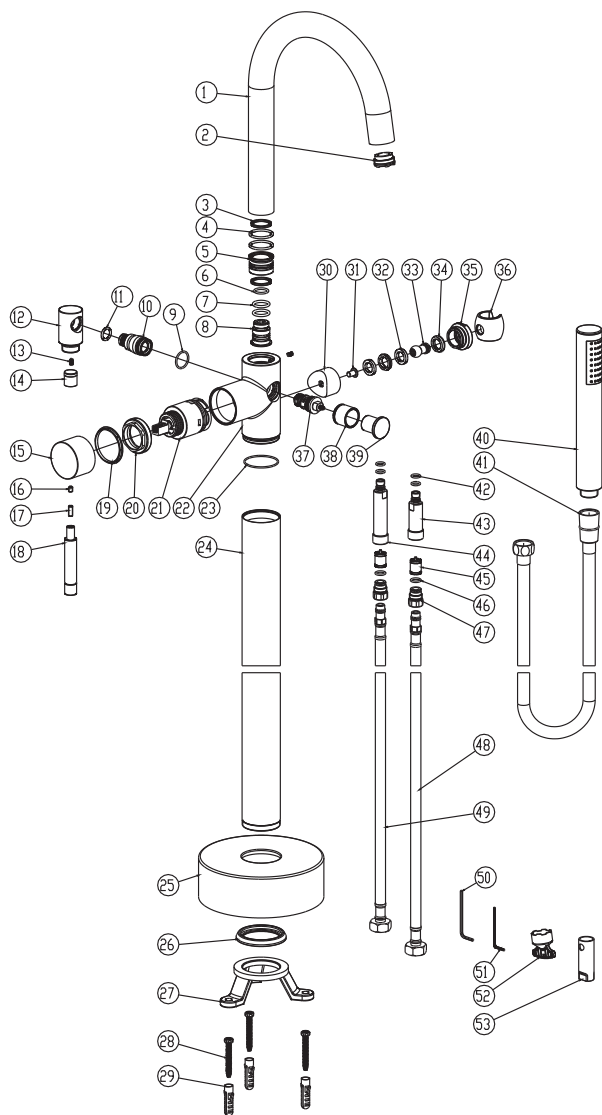
Tips for Successful Installations

- Use joint compound or Teflon® tape on all threaded connections to prevent leaks.
- Use a soft cloth to protect the faucets finish when using a wrench, pliers or other tools that could scratch the faucet.
- Tighten all hose connections by hand. Do not over tighten.
- Before turning main water supply back on, open several faucets around the house to prevent pressure from building up.
- Remove aerator from faucet before turning on water. Flush drain for several minutes before replacing aerator. DO NOT use joint compound or Teflon® tape to reconnect aerator.



Specification Sheet





NOTE: 14 and 45 - DUAL CHECK VALVES-
BACKFLOW PREVENTION DEVICES

Component Parts List

#	PARTNAME	QTY.
01	SPOUT	1
02	AERATOR	1
03	WASHER	2
04	O-RING	2
05	NUT	1
06	O-RING	1
07	O-RING	2
08	NUT	1
09	O-RING	1
10	HOUSING,CYLINDER	1
11	O-RING	1
12	ELBOW	1
13	SCREW	2
14	CHECK VALVE	1
15	HANDEL CAP	1
16	SCREW	1
17	SCREW	1
18	LEVER HANDEL	1
19	WASHER	1
20	BONNET	1
21	CARTRIDGE	1
22	BODY	1
23	O-RING	1
24	DECOVATIVE TUBE	1
25	COVER	1
26	RUBBER RING	1
27	MOUNTING BRACKET	1

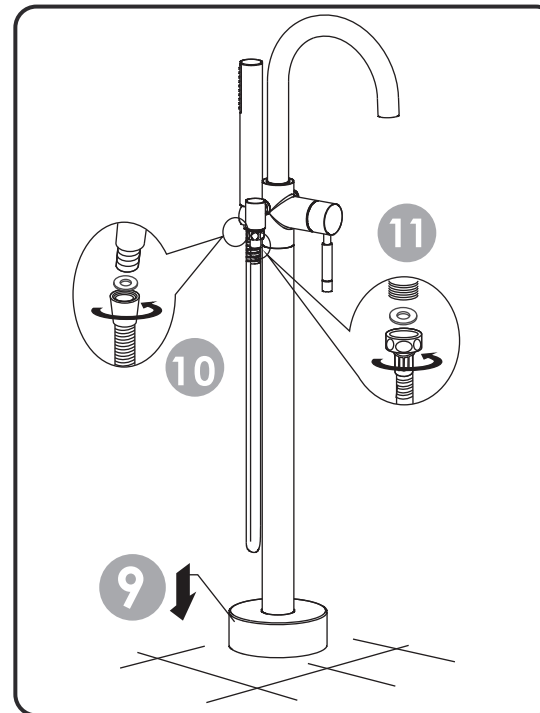
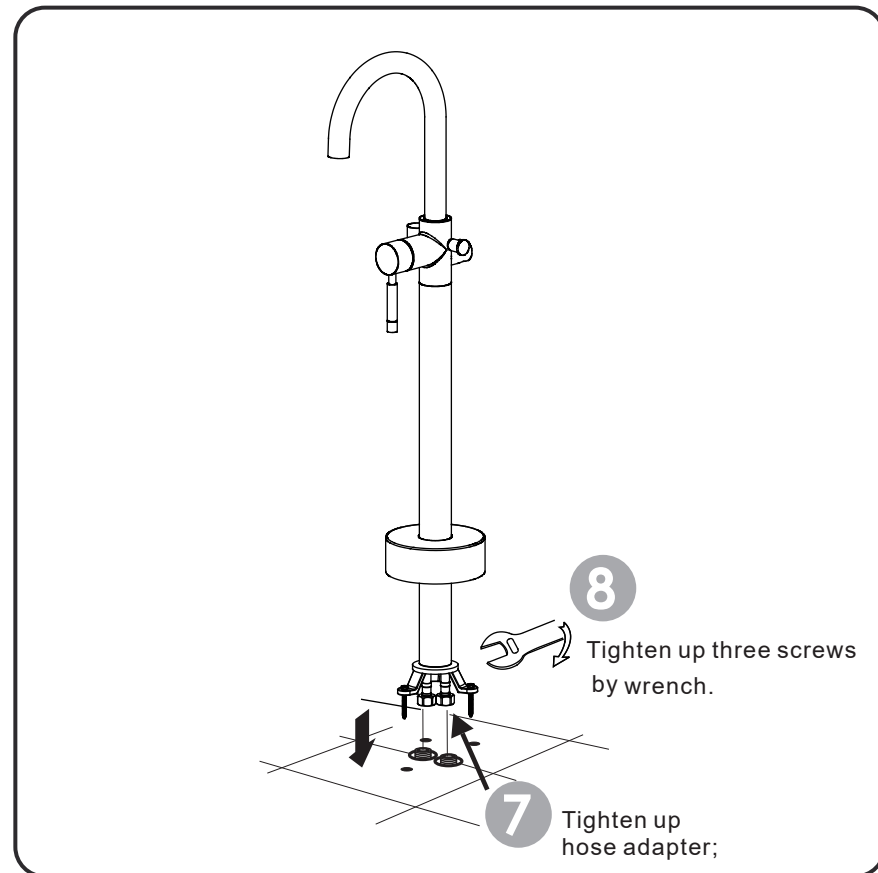
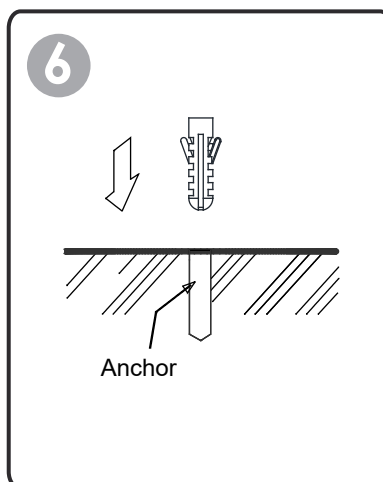
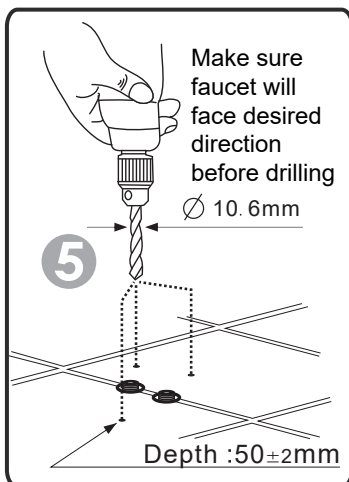
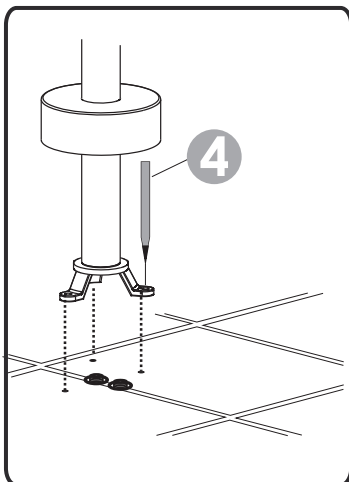
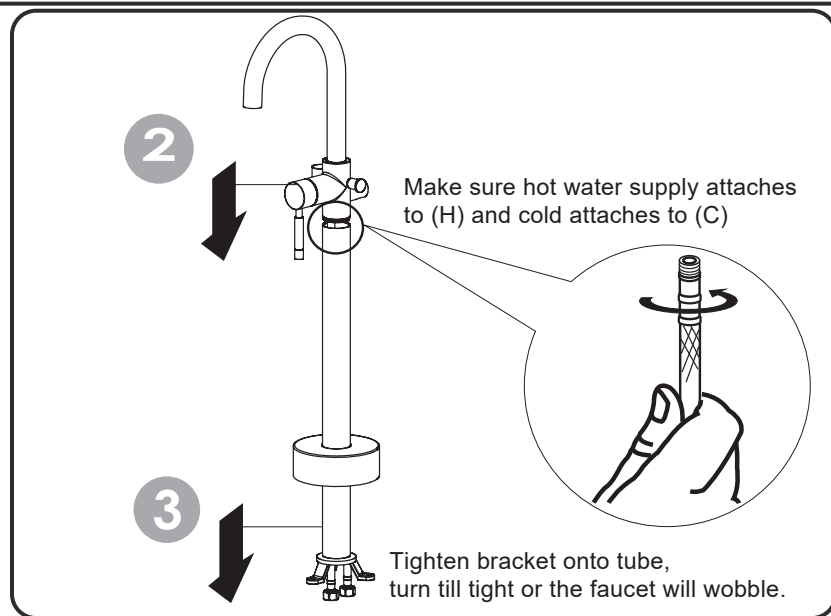
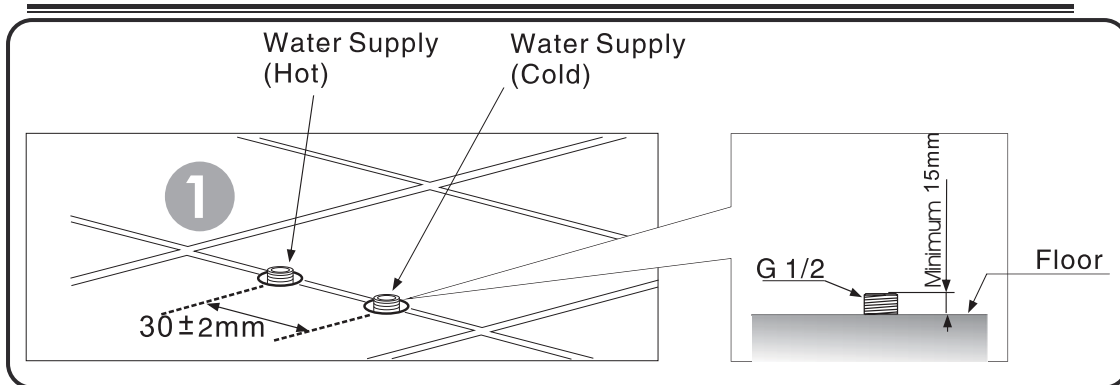
#	PARTNAME	QTY.
28	SCREW	3
29	PLASTIC INSERT	3
30	CONNECTOR	1
31	SCREW	1
32	WASHER	2
33	CONNECTOR	1
34	CLIP	2
35	NUT	1
36	SHOWER HOLDER	1
37	DEVITER	1
38	COVER	1
39	END CAP	1
40	SHOWER	1
41	HOSE	1
42	O-RING	4
43	CONNECTOR	1
44	CONNECTOR	1
45	CHECK VALVE	2
46	O-RING	2
47	CONNECTOR	2
48	HOSE	1
49	HOSE	1
50	HEX WRENCH	1
51	HEX WRENCH	1
52	AERATOR TOOL	1
53	DEVITOR TOOL	1
54		

Cheviot
PRODUCTS INC

Tel: (800) 444-5969

WWW.cheviotproducts.com

Installation Instructions



Double check the entire installation for any leaks, and to make sure the faucet is functioning properly.