



# KRYPTON

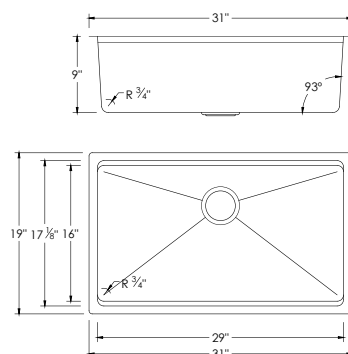
## S-131W

STAINLESS STEEL  
HANDMADE SINGLE BOWL KITCHEN SINK

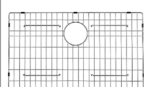


### DIMENSIONS

31" x 19" x 9"



### INCLUDED ACCESSORIES



G-131

GRID



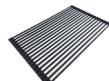
ST-05

STRAINER



A-06

COLANDER



A-902BK

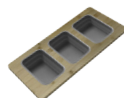
BLACK DRYING RACK



A-917

BLACK CUTTING BOARD

### RECOMMENDED ACCESSORIES



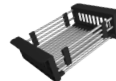
A-908

SERVING BOARD



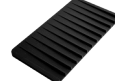
A-912

CUTTING BOARD



A-911

BASKET



A-916BK

DRYING MAT



S-01S

SOAP DISPENSER

### SURFACE FINISH

BRUSHED  
STAINLESS  
STEEL

### DRAIN HOLE SIZE



### CORNER PROFILE



RADIUS 20mm

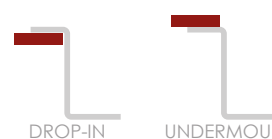
### INSULATION

COATED +  
RUBBER PADS

### BOWL DEPTH



### INSTALLATION OPTIONS



### MATERIAL

Premium 16 gauge stainless steel with 18/10 chrome-nickel content. The 18% of chrome content provides durability, maximum protection against rust and a beautiful satin finish. The 10% of nickel content provides excellent strength and hardness.

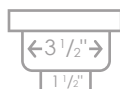


16 GAUGE  
STAINLESS STEEL

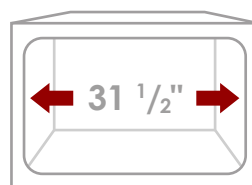
### PRODUCT DIMENSIONS

Overall Dimensions	31" x 19" x 9"
Internal Dimensions	29" x 17 1/8" x 9"
Left Basin	-
Right Basin	-
Drain Opening Size	3 1/2"

### STANDARD STRAINERS



### CABINET SIZE



MINIMUM  
INTERNAL SIZE

### GARBAGE DISPOSAL

Stylish® sinks have on standard 3 1/2" drain opening that can fit any garbage disposal unit. The sink structure is well designed to withstand any heavy garbage disposal unit.



### WARRANTY

This product is covered by a limited lifetime warranty. Consult our website for complete details.

### PRODUCT CARE

Rinse and dry your sink with a clean soft cloth, working with, not a cross, the grain. We recommend the use of a mild solution of water and vinegar to remove any mineral deposits that may have built up on your sink. Use mild non-abrasive liquid cream cleaners that do not contain chlorine, sodium hypochlorite or hydrochloric acid to help maintain the original appearance of your sink. Ensure that you thoroughly rinse your sink and wipe it dry. We recommend the use of a stainless steel grid that fits inside the bottom of the sink bowl and protect the sink from scratches.



### STANDARDS COMPLIANCE

This sink meets cUPC standards. The ST-05 strainer is cUPC certified by the factory.

Stylish International Inc.

[www.stylishkb.com](http://www.stylishkb.com)

[stylish.international.inc](http://stylish.international.inc)

[care@stylishkb.com](mailto:care@stylishkb.com)

+1-855-789-5352

Products and specifications shown are subject to change without notice. Please contact our technical support at [care@stylishkb.com](mailto:care@stylishkb.com) for any further queries, replacement parts requests, etc. ©2023 Stylish® all right reserved.