



## UTENSIL BARS

### WR0, WR1, WR2, WR3, WR4, WR5

If you need assistance, please call 1-877-ENCLUME  
Enclume Design Products  
24 Colwell Street, Port Hadlock, WA 98339



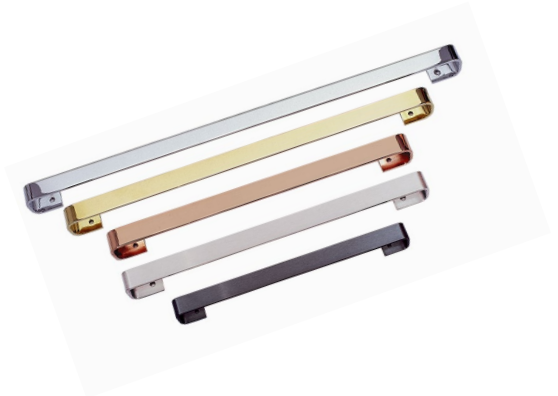
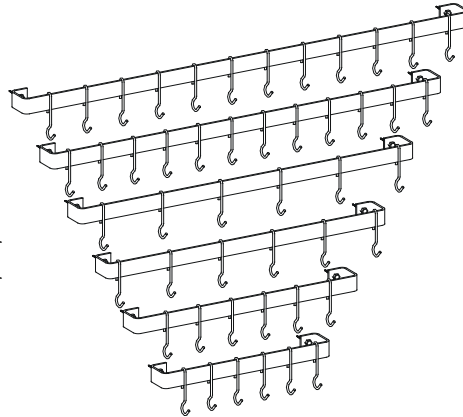
Enclosed you will find everything needed for the assembly and use of your utensil bar. Two people make assembly and installation easier. The parts and hardware included are:

#### Hardware included:

2 – 2" Lag Screws  
Toggle Kit

#### Components included:

1 – Utensil Bar  
12 – Straight Pot Hooks – 48" bar  
12 – Straight Pot Hooks – 42" bar  
6 – Straight Pot Hooks – 36" bar  
6 – Straight Pot Hooks – 30" bar  
6 – Straight Pot Hooks – 24" bar  
6 – Straight Pot Hooks – 18" bar



## ASSEMBLY AND INSTALLATION INSTRUCTIONS for WR0, WR1, WR2, WR3, WR4, WR5

### Rack Assembly

- 1) If your utensil bar is plated it is best to keep the tissue on during installation to avoid fingerprinting.
- 2) Mount the bar onto the wall using the two lag screws. The Lag Screws must go into the solid wood or into a wooden stud. If your kitchen construction does not allow direct mounting into wood, consider mounting your utensil bar to an attractive piece of finished lumber and mounting that where studs allow. If you are mounting into plaster wall, use Toggles provided and follow the directions in the kit.
- 3) The care and cleaning of copper and brass units must be done with a non-abrasive cleaner such as "Flitz". Chrome racks are best cleaned with a good quality glass cleaner. Our high quality plating will age and tarnish the same as solid material. A periodic cleaning will restore your rack to its original brilliance.

**WARNING:** It is important that your utensil bar is assembled correctly. If the unit is assembled or used incorrectly, it could become unstable and collapse, possibly causing injury.

**LIMITED WARRANTY:** This product is warranted to be free of material defects, other than that from normal use, for a period of five years from the date of purchase. Customer's exclusive remedy shall be the repair or replacement of the defective product and shall be subject to the following conditions: (1) notice of any defect is received by Enclume within the warranty period and (2) customer returns the defective product to Enclume Design Products, 24 Colwell St., Port Hadlock, WA 98339, postage prepaid within 20 days following a return authorization number (which may be obtained by telephoning the number at the top of this instructions) being provided to the customer by Enclume. There are no other warranties, expressed or implied. THERE ARE NO WARRANTIES OF MERCHANTABILITY OR FITNESS FOR A PARTICULAR PURPOSE. ENCLUME SPECIFICALLY DISCLAIMS ANY AND ALL INCIDENTAL OR CONSEQUENTIAL DAMAGES ARISING OUT OF THE PURCHASE OR USE OF ENCLUME'S PRODUCTS.