



**MB/BN/BG/ORB/CP**



**LUXURY SHOWER SYSTEM  
INSTALLATION**

 Website: [www.wellfor.com](http://www.wellfor.com)

 Customer Service: 206.809.0093

 Email: [service@wellfor.com](mailto:service@wellfor.com)

## INSTALLATION INSTRUCTIONS

We recommend consulting a professional if you are unfamiliar with installing plumbing fixtures. WELLFOR accepts no liability for any damage to the plumbing, floor, walls, tub, or for personal injury during installation. Please observe all local plumbing and building codes.

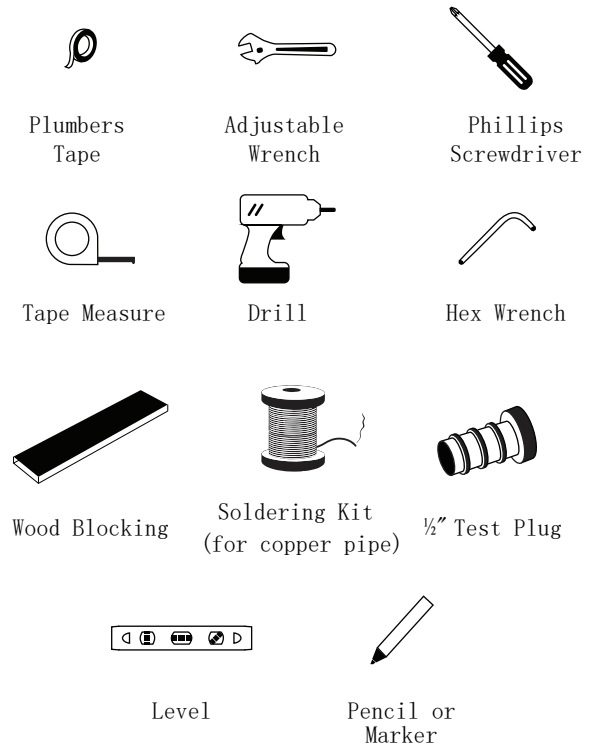
## GETTING STARTED

- Ensure that you have gathered all the required materials that are needed for the installation.
- For the following installation instructions, it is assumed that the wall has been opened and that the existing shower set has been removed.
- Before you begin, the main water supply to your home should be shut off.

## INSTALLATION PRECAUTIONS

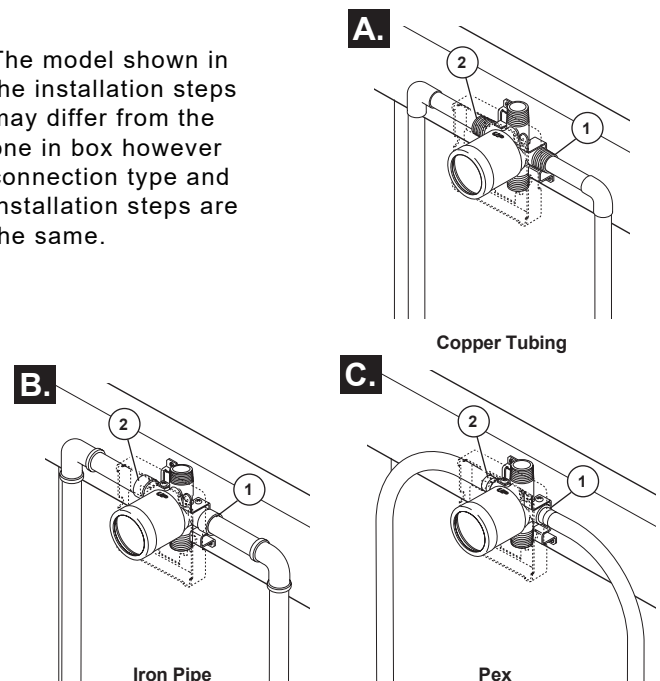
- Unpack and inspect the items for shipping damage. If any damage is found, contact our Customer Relations team.
- The impurities in the water supply pipe must be cleared before installation to avoid blockage.
- The hot water supply is on the left and the cold water supply is on the right. Incorrect connection will cause permanent damage to the cartridge.
- The water pressure of faucet is 0.05MPa-1.0 Mpa(including cold water and hot water pressure). Applicable water temperature range is 39°F-194°F.

## TOOLS AND MATERIALS:



## CONNECTION ADVICE

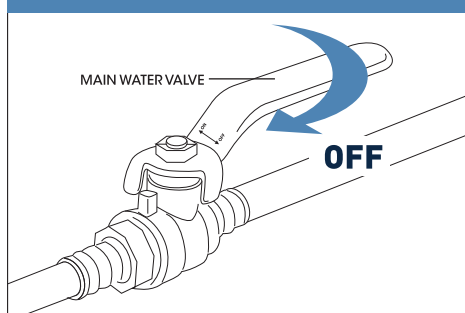
\*The model shown in the installation steps may differ from the one in box however connection type and installation steps are the same.



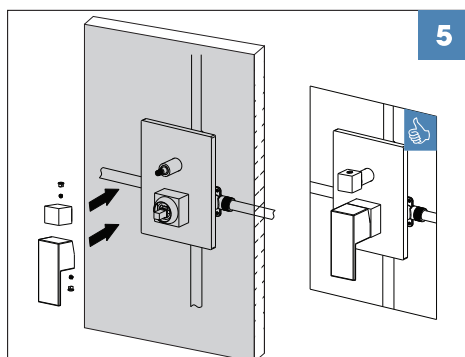
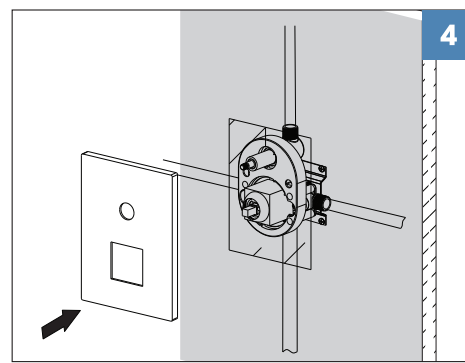
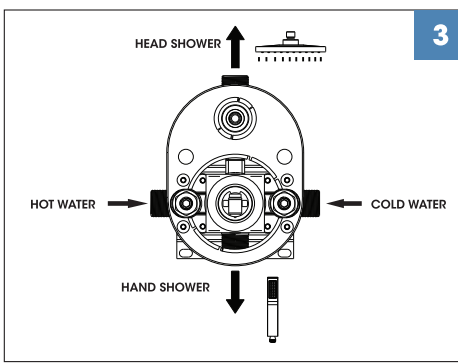
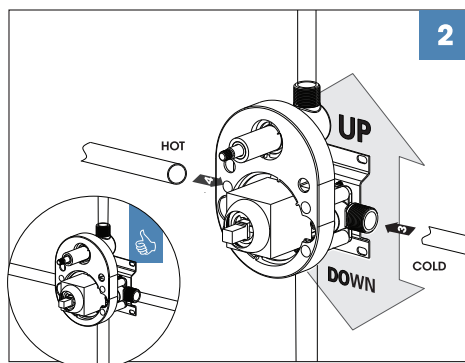
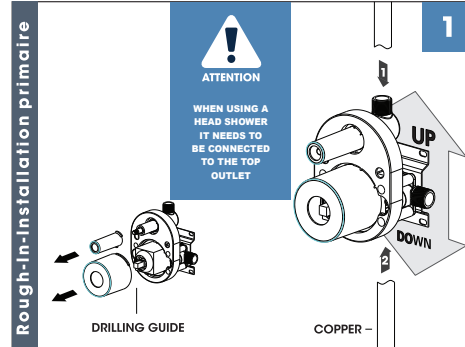
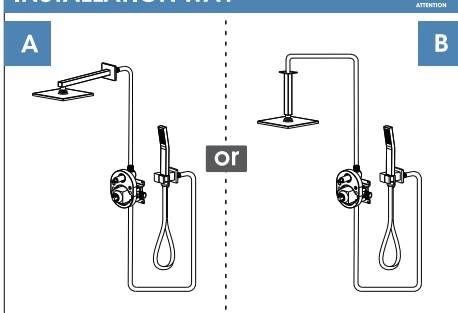
**Note:** (1) is the cold inlet port and (2) is the hot inlet port.

## INSTALLATION STEPS

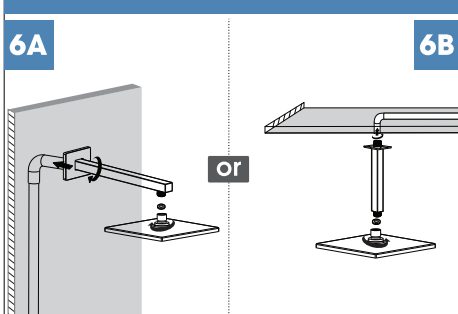
### BEFORE YOU BEGIN



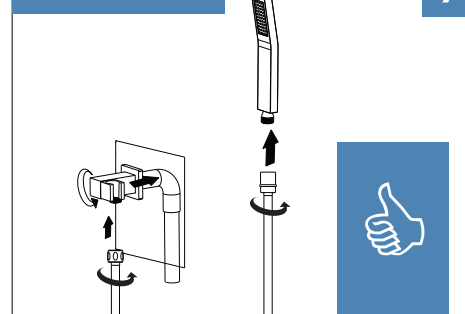
### INSTALLATION WAY



### HEAD SHOWER

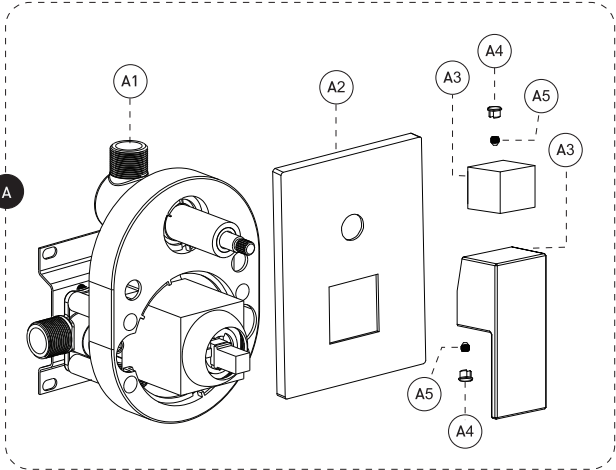
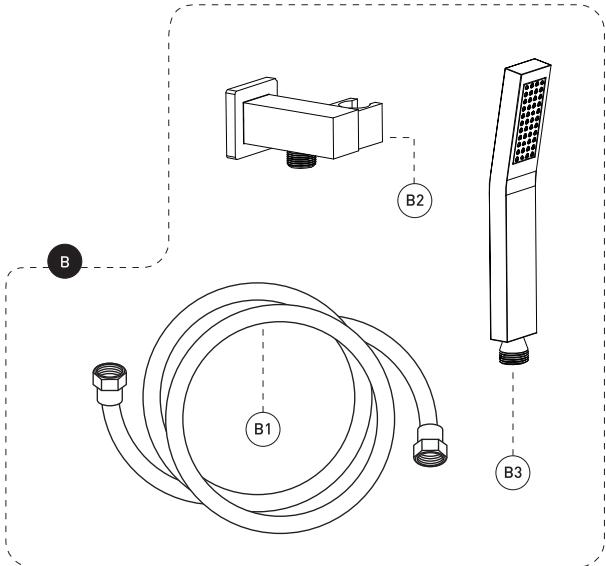
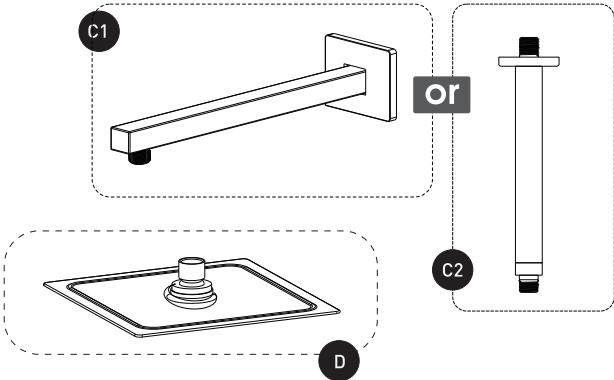


### HAND SHOWER





1.Accessories List



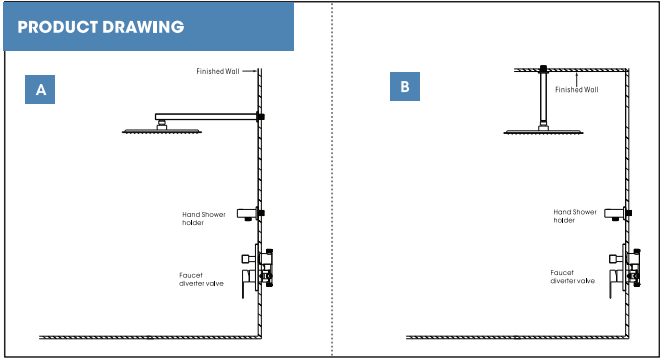
No	Description
A	pressure balanced diverter valve
A-1	valve
A-2	face plate with seal joint
A-3	Diverter knob kit
A-4	trim cap
A-5	set screw
B	sliding bar kit with flexible hose
B-1	flexible hose
B-2	hand shower holder
B-3	hand shower
C1	shower arm and flange kit
C2	ceiling shower arm and flange kit
D	shower head

CARE INSTRUCTIONS

Rinse the product with clear water. Dry the product with a soft cloth.

DO NOT:

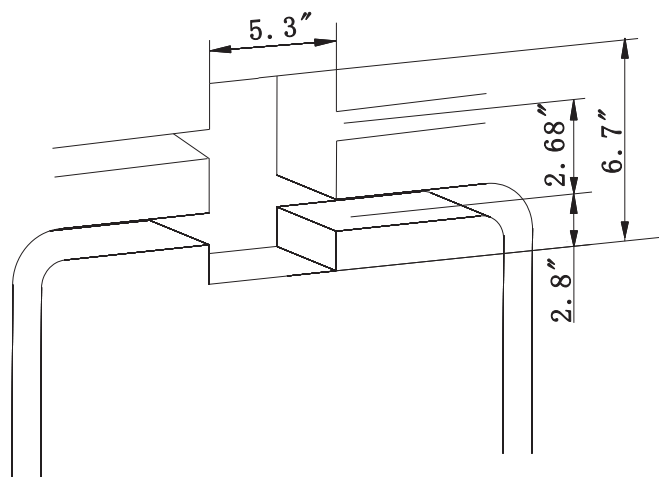
Use abrasive cleansers, cloths, or paper towels. Use any cleaning agents containing acid, polish, wax, alcohol, ammonia, bleach, solvent or any other corrosive or harsh chemical cleansers.



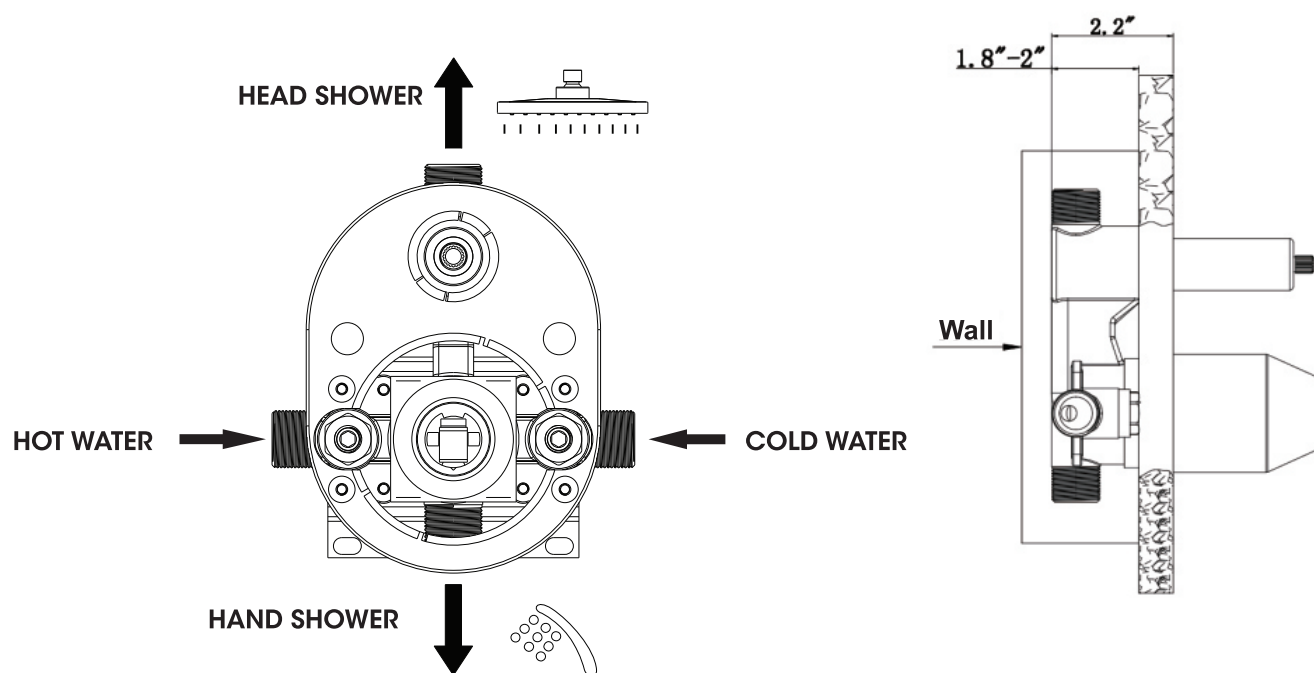


## 2. Technical drawing of drilling size

1. The size of the embedded box that needs to be drilled is 5.3"×6.7".



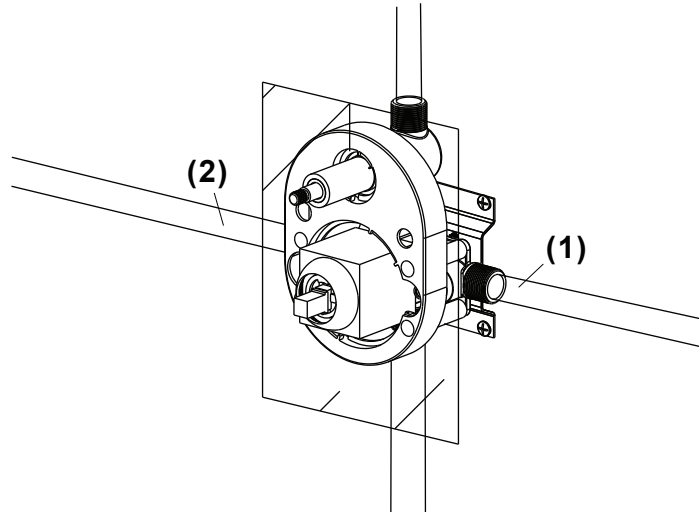
2. The depth of the embedded box is 1.8"-2.2". It's better to drill the depth of 1.8" for blank wall.



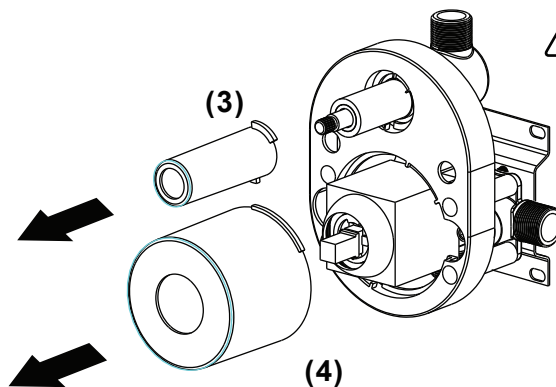
## 3. Pipe connection

1. Connect valve body to water supplies using the proper fitting(copper tubing, iron pipe or Pex). If either of the two outlet ports is to be unused, seal the port with a pipe plug.

**Note: (1) is the cold inlet port and (2) is the hot inlet port.**

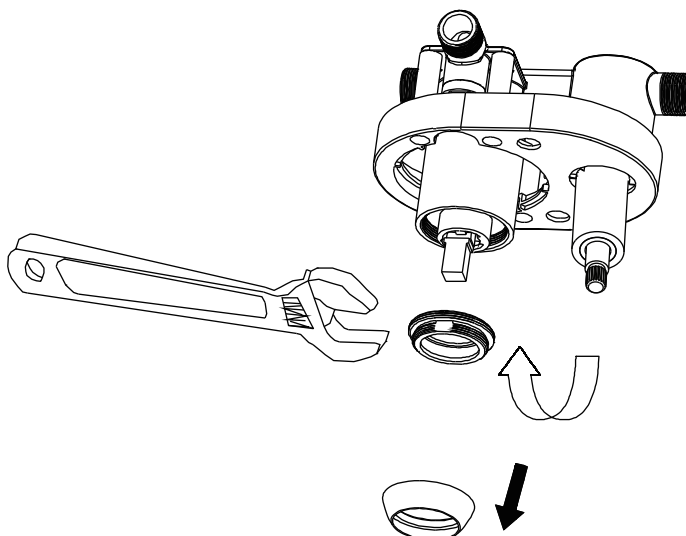


2. For copper pipe soldering joint, you need to remove the plastic covers(3) and (4) and valve cartridge from the valve body first. Avoiding soldering at high temperatures. Component of the rough could become damaged.

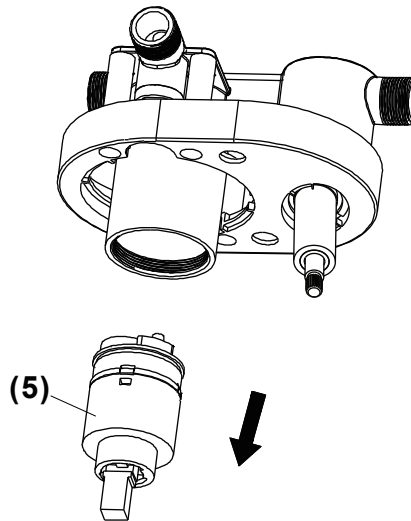


**Warning:** soldering joint have high temperture,do not touch hot surfaces.

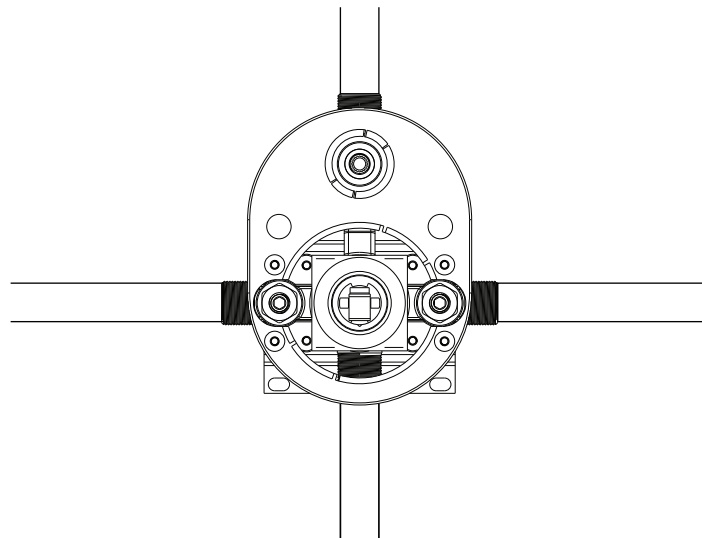
3. Remove bonnet nut and thread nut from the valve body.



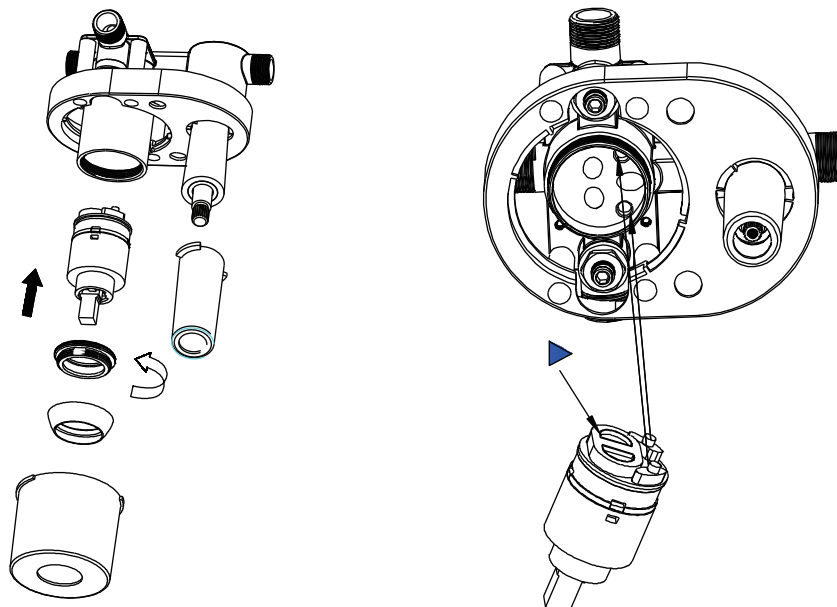
4. Remove the valve cartridge(5) from the valve body.



5. Soldering copper pipes to brass valve, then flush the system of debris for 30 seconds.



6. After flushing, install the cartridge and bonnet nut. Make sure the cartridge is fully engaged with the slot and holes in the brass valve body.



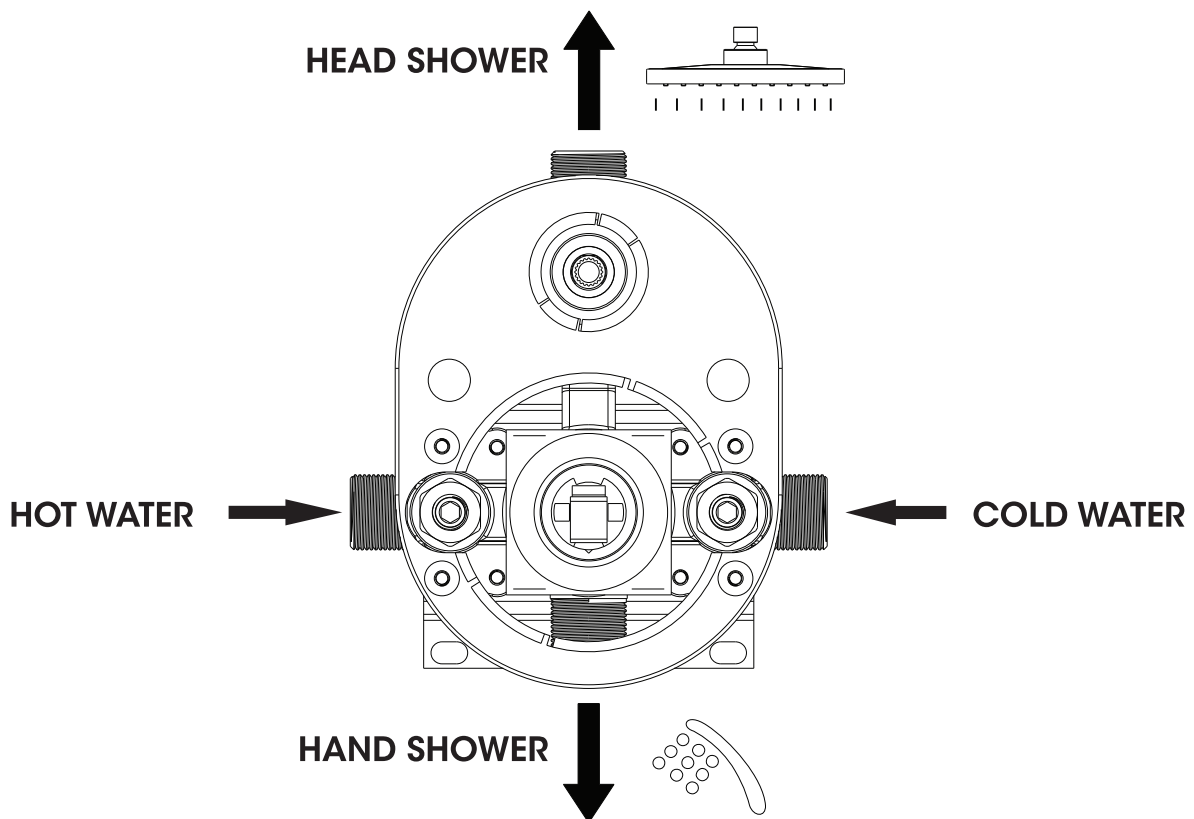


## 4. Water testing and sealing testing

1. After the pipe connection is completed, open the protective panel and cover, and then open the cartridge, flush the pipe; then close the cartridge to check the pressure resistance and sealing performance of the pipeline, make sure there are no leakage.

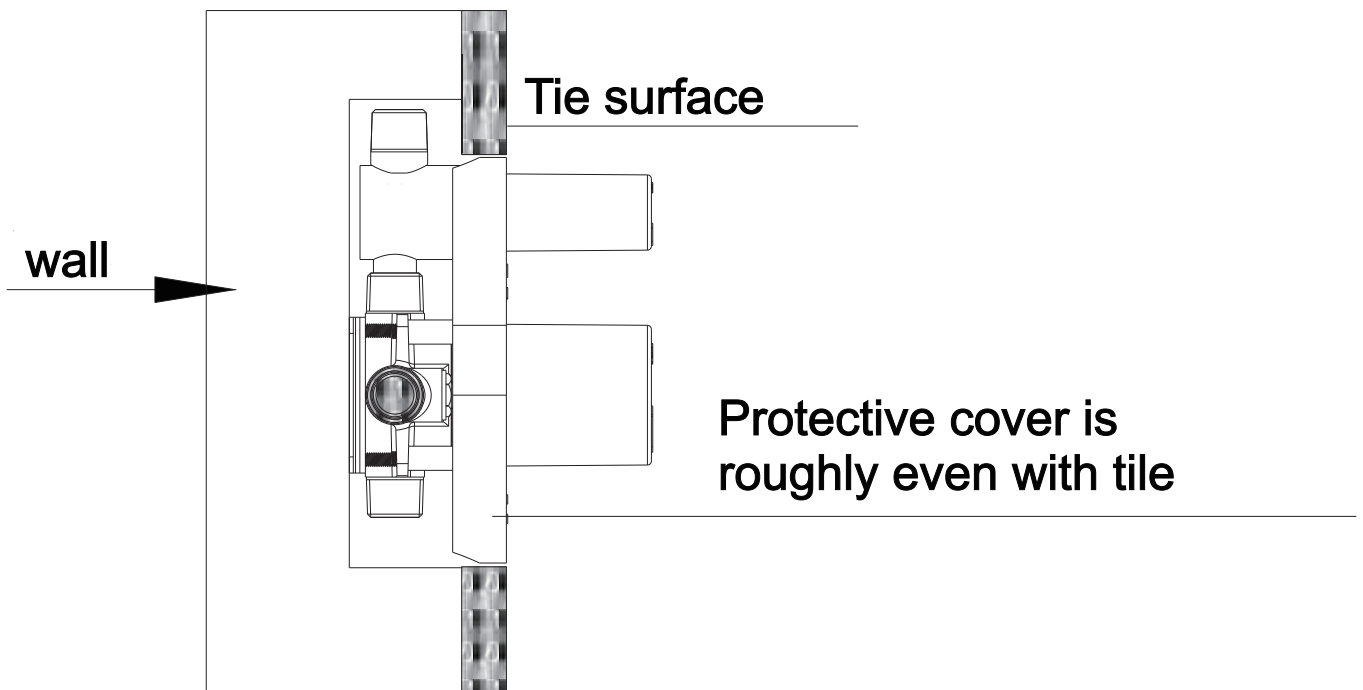
2. Block each outlet pipe with a stopper then open the cartridge to check if the pipe joint is well sealed and the pipe condition under pressure to ensure no leakage.

Testing Purpose: Flush the impurities and sludge in the pipe to avoid clogging and affect the effluent functions.



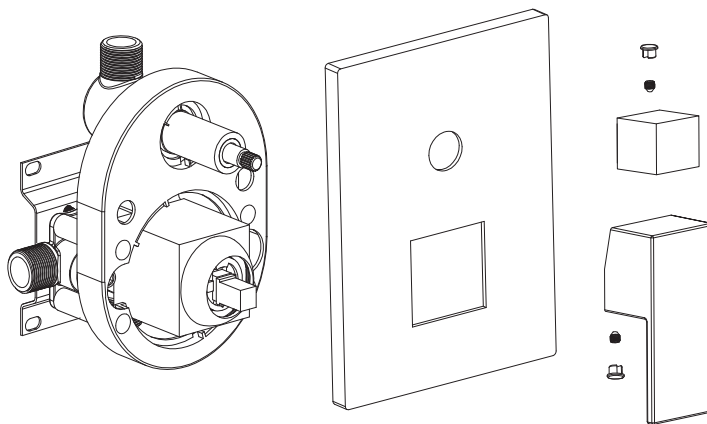
## 5.The procedure of sealing the wall

Use a parallel ruler to measure the flatness of the embedded box casing and the vertical wall surface. If the wall surface is not flat, it should be patched to ensure the embedded box casing and vertical wall angle meets at nearly ideal angle of 90°, then lay the tile decoration.

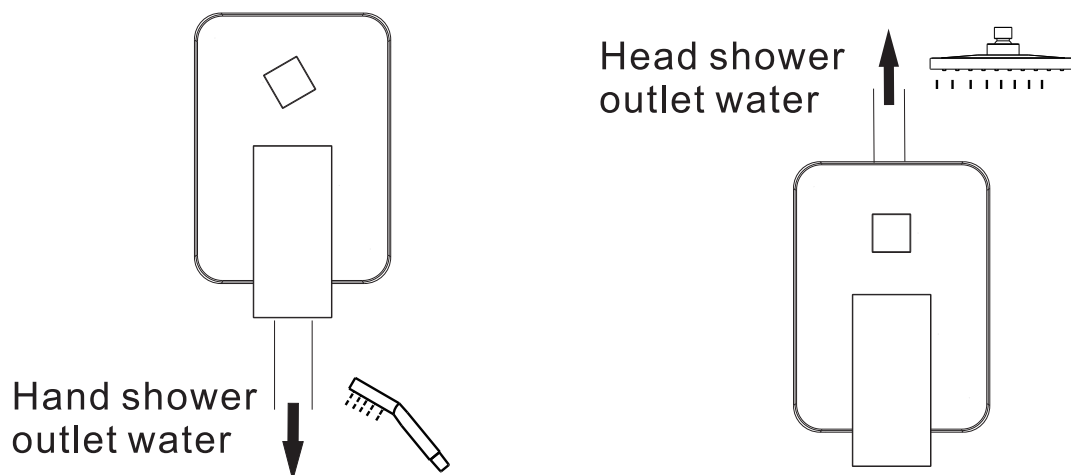


## 6. Installation of control valve

1. Take off the protective panel and cover.
2. The decorative panel and the handle are connected to the control valve as shown below sequence.



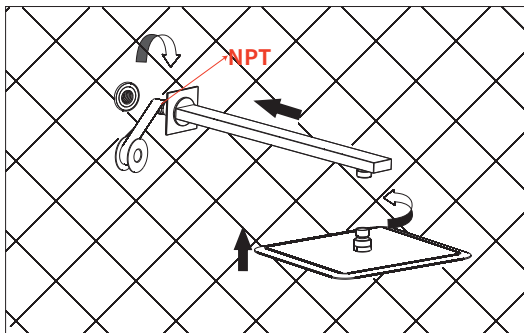
3. According to the figure below, please correctly adjust the direction of water separator handle.



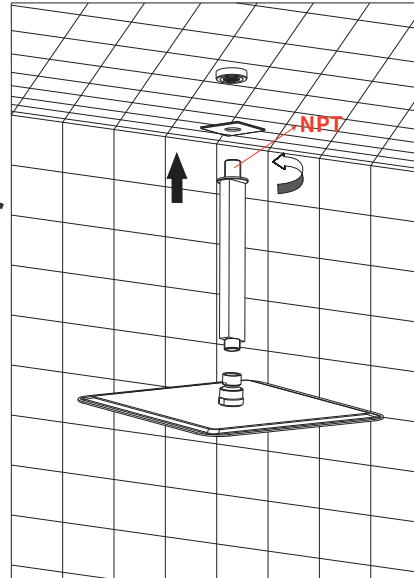


## 7. Shower sets installation

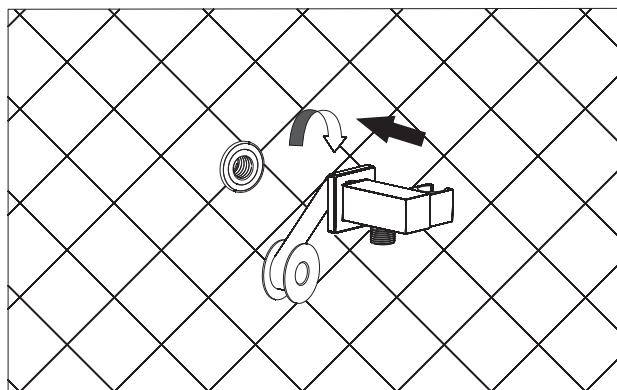
①



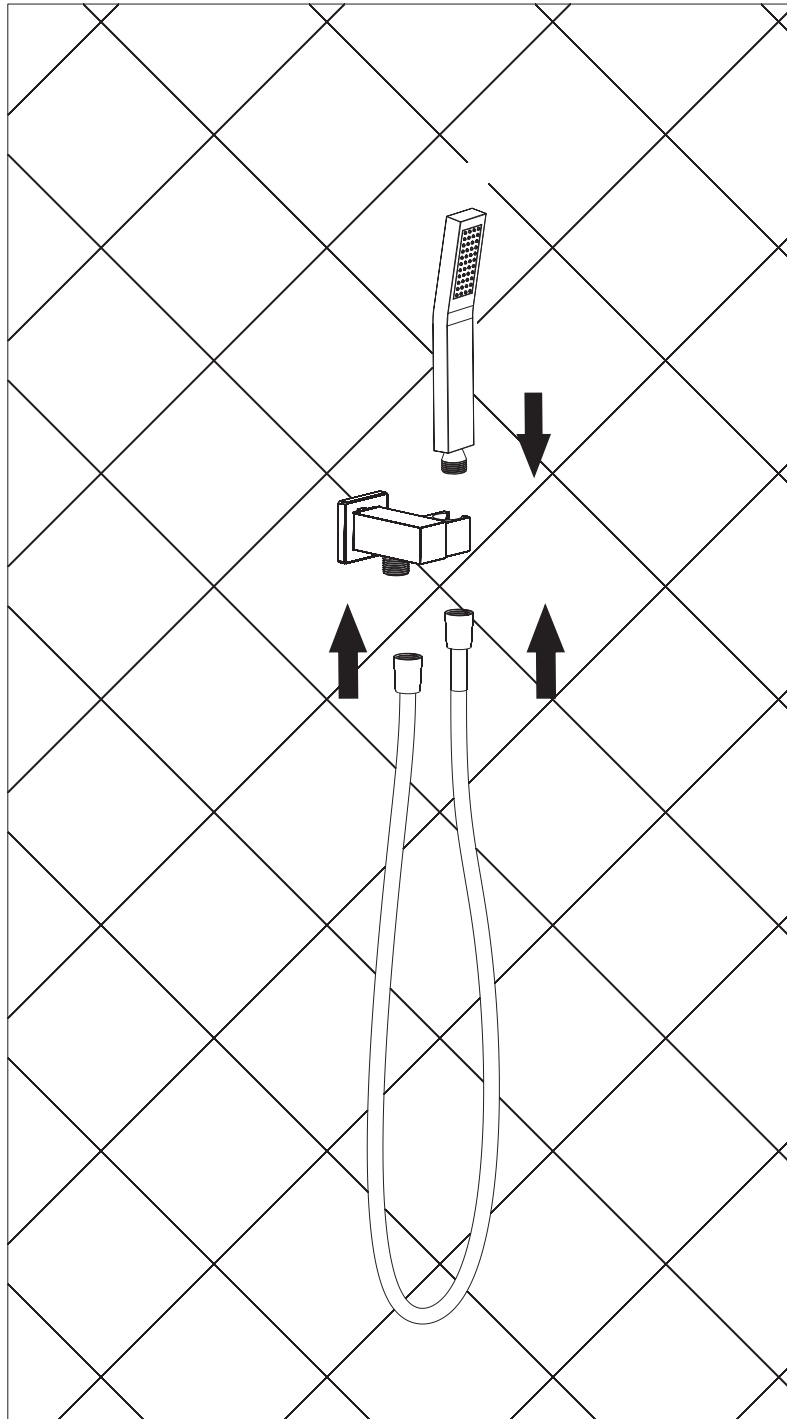
or



②



## 8.Handle shower installation



## 9.Product reparation

If the cartridge is worn out which cause leakage,please turn off the water source.Remove the handle, panel, and decorative cover in sequence,remove the gland with a wrench, then take out the cartridge and copper sleeve. Repair or replace the new cartridge, then install it again in sequence.

## 10.Clearance and maintenance

In order to keep the faucet appearance smooth and good performance,please follow the below steps to clean and maintain the faucet.

- 1.Clean with water and dry with a soft cotton cloth.
2. Use a mild liquid and a colorless glass cleaner to remove surface dirt and scale, also you can use the cleaner without grinding function.
3. Do not use detergents, polishing tools, abrasive cloth, paper towels or scrapers to clean the faucet.
4. Do not use acid cleaners, insoluble granular detergents, soaps etc to clean the faucet.