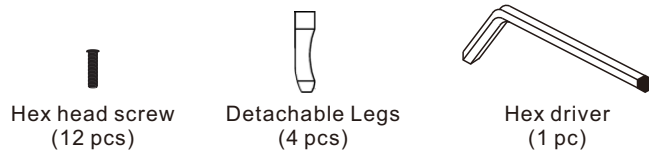


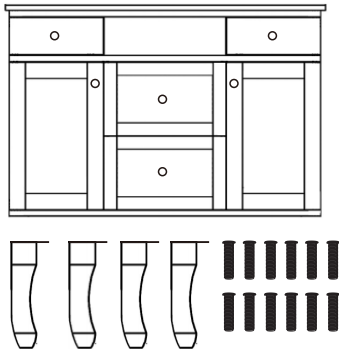
BELLATERRA HOME

Model: 203045

Parts List (Included)

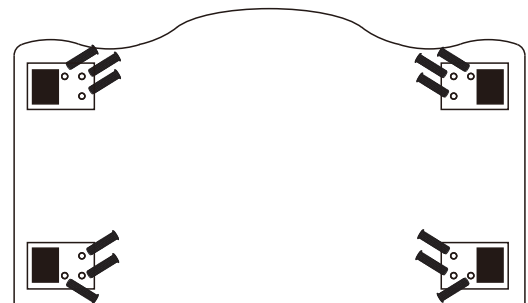


Remove the vanity and hardware from box and place vanity on soft or protective surface to avoid damage to the vanity. Please check to see that all hardware and parts are present prior to assembly.



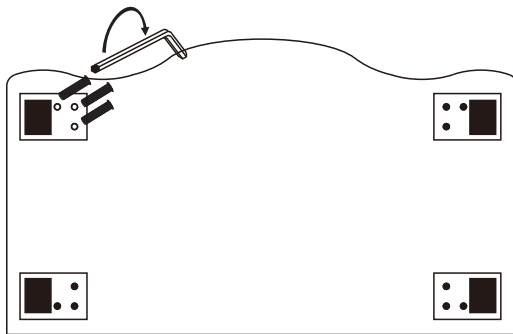
Step 1

Flip the vanity with the back side down on a soft surface. Locate the mounting clip on the feet to the bottom of the cabinet, and matching the three holes with the embedded nuts at cabinet bottom, please hand tighten the screws to fix the feet on the cabinet in advance. **DO NOT OVER ROTATE TO TIGHTEN THE SCREWS, IT WILL DAMAGE THE THREAD.**



Step 2

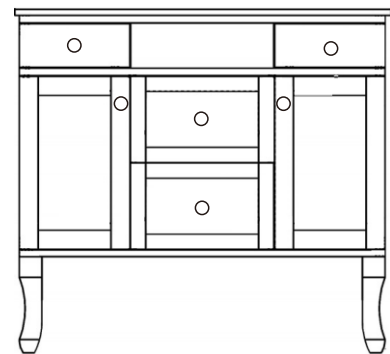
Please use the hex driver to tighten the screws to fix the feet until it is tight and in line with the cabinet. **DO NOT OVER ROTATE TO TIGHTEN THE SCREWS, IT WILL DAMAGE THE THREAD.**



Step 3

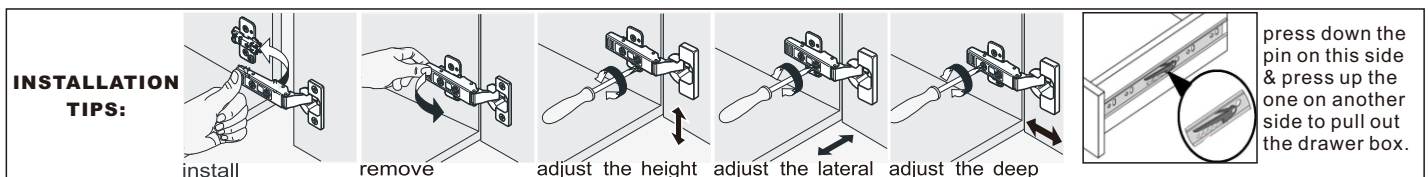
Gently lift the vanity back up in the upright position and assembly is complete. The unit is now ready to be installed at the desired location.

***** This is a fragile and heavy cabinet. We recommend two people to lift and flip this cabinet*****



Step 4

REMARKS: TO AVOID DAMAGE ON THE COUNTER TOP AND VANITY , PLEASE BE CAREFUL WHEN LIE DOWN AND LIFT UP THE VANITY SINCE THE COUNTER TOP IS A FRAGILE UNIT. INSTRUCTIONAL PURPOSE ONLY.



NOTE: SINK STYLE, SHAPE, FAUCET HOLES, CUTOUT ON TOP, VANITY MAY VARY FROM THE PICTURE ABOVE. INSTRUCTIONAL PURPOSE ONLY.

Professional installation is recommended.
www.bellaterra-home.com

Bellaterra Home LLC, All Rights Reserved 2023