



Underscore® Rectangle

5' VibrAcoustic® Bath

K-1167-VBLW



Features

- VibrAcoustic calms and soothes with sound vibration technology.
- Six concealed speakers send sound waves through the water to gently massage the body.
- Four original instrumental compositions offer different levels of relaxation.
- Syncs with devices enabled with BLUETOOTH® wireless technology including smartphones, MP3 players, tablets, and laptops located up to 33 feet away.*
- Customize your experience with the high-resolution color touch screen.
- Fully adjustable volume above and below the water.
- Functions as a hydrotherapy bath when full of water and a stereo system when empty.
- Bask® heated surface creates spa-like relaxation with soothing warmth on your back and neck.
- Three heat settings allow you to customize the surface temperature.
- Clearflo slotted overflow for deep soaking.
- Integral flange helps prevent water from seeping behind wall and simplifies alcove installation.
- Left-hand drain.
- Includes 25 feet of wiring and amplifier.

Material

- Acrylic

Hydrotherapy

- VibrAcoustic

Installation

- Three-wall alcove.
- Requires 110V electrical service.

Additional Hydrotherapy Options

- Soaking Bath - K-1121-L
- Soaking Bath + Bask heated surface - K-1121-LW
- BubbleMassage air bath - K-1167-LFG
- BubbleMassage air bath + chromatherapy - K-1167-LGCR
- VibrAcoustic + BubbleMassage air bath - K-1167-GVL
- VibrAcoustic + BubbleMassage air bath + Bask heated surface + chromatherapy - K-1167-GVCLW
- BubbleMassage air bath + Bask heated surface - K-1167-GLW
- Whirlpool + heater - K-1167-LH2
- VibrAcoustic - K-1167-LVB
- VibrAcoustic + chromatherapy - K-1167-LVBC
- VibrAcoustic + chromatherapy + Bask heated surface - K-1167-VCLW
- VibrAcoustic + Bask heated surface - K-1167-VBLW



ADA

Codes/Standards

CSA B45.5/IAPMO Z124
ASTM E162
ASTM E662
UL 1795
CSA C22.2 No. 218.2
Greenguard UL 2818 - Gold
ADA
ICC/ANSI A117.1




KOHLER® Plastic Baths and Receptors Lifetime Limited Warranty

See website for detailed warranty information.

The BLUETOOTH® word mark and logos are registered trademarks owned by Bluetooth SIG, Inc. and any use of such marks by Kohler Co. is under license. Other trademarks and trade names are those of their respective owners.

Available Colors/Finishes

Color tiles intended for reference only.

| Color | Code | Description |
|--|------|---------------|
|  | 0 | White |
|  | 96 | Biscuit |
|  | 47 | Almond |
|  | NY | Dune |
|  | 95 | Ice™ Grey |
|  | G9 | Sandbar |
|  | 33 | Mexican Sand™ |

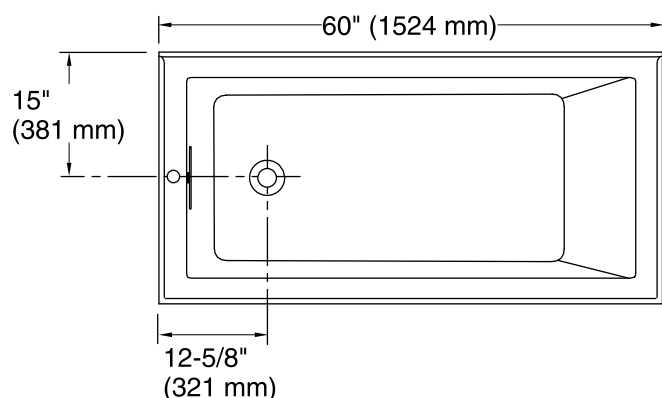
1-800-4KOHLER (1-800-456-4537)

Kohler Co. reserves the right to make revisions without notice to product specifications.

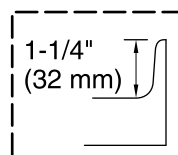
For the most current Specification Sheet, go to www.kohler.com.

5-25-2019 05:21 - US/CA

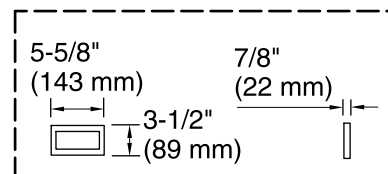
THE BOLD LOOK
OF **KOHLER**®



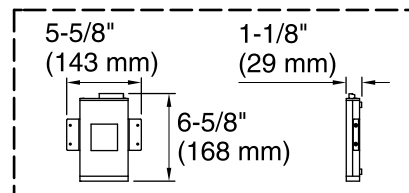
No change in measurement if connected with drain illustrated. (K-7272)



Tile Flange Detail

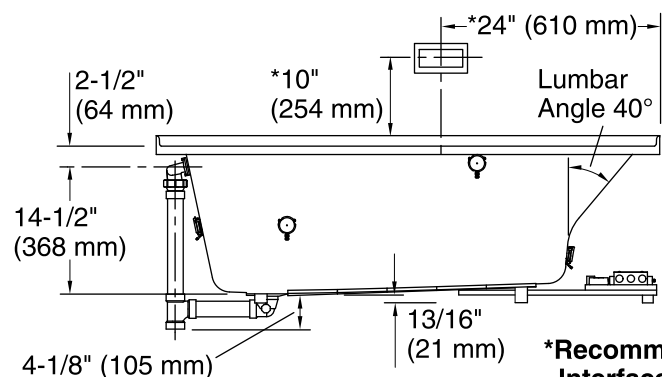


User Interface

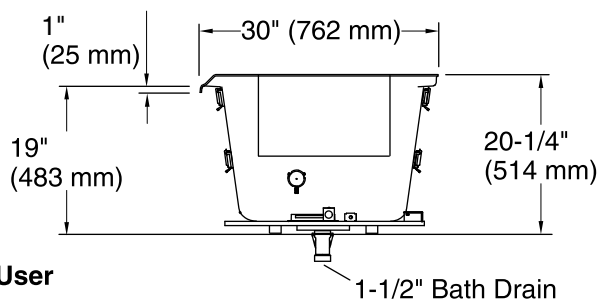


Amplifier

Control Access
30" (762 mm) W
x 15" (381 mm) H
Min



***Recommended User Interface Location**



Required Electrical Service

One circuit required, protected with Class A Ground-Fault Circuit-Interrupter (GFCI). Outside North America, this device may be known as a Residual Current Device (RCD).

Amplifier, Heated
Surface: 120 V, 15 A, 50/60 Hz

Technical Information

All product dimensions are nominal.

| | |
|------------------------------|---|
| Installation: | Three-wall alcove |
| Drain location: | Left |
| Basin area, bottom: | 42-3/8" x 20" (1076 mm x 508 mm) |
| Basin area, top: | 54-3/8" x 24-5/16" (1381 mm x 618 mm) |
| Weight: | 85 lbs (38.6 kg) |
| Minimum floor load: | 50 lbs/ft² (244.1 kg/m²) |
| Water depth: | 15-1/16" (383 mm) |
| Water capacity: | 59.8 gal (226.4 L) |
| Electrical component rating: | Amplifier: 120 V, 1.1 A, 50/60 Hz Heated Surface: 120 V, 0.5 A, 50/60 Hz, 65 W |
| Amplifier channels: | 2 at 15 W per channel 2 at 30 W per channel |

Notes

Measure your actual product for rough-in details. Install this product according to the installation instructions.

The hot water supply should be 70% of the capacity of the bath or greater. Installations will vary.

Control amplifier fits 16" (406 mm) center studs. 25' (7.6 m) cables are included.

ADA compliant when installed to the specific requirements of these regulations.