

**BRITISH TELEPHONE FAUCET  
&  
FREESTANDING WATER SUPPLY  
LINES**

# INSTRUCTIONS

Before beginning, read the instructions below and follow all local plumbing and building codes.

Unpack and inspect your new faucet for any shipping damages and ensure no pieces are missing. If any damages are discovered, DO NOT INSTALL.

Please Contact Customer Service at 1(866)448-TUBS.

You may also call our Customer Service for any other assistance with our products.

SHUT OFF ALL WATER SUPPLY LINES AT THE TUB WHEN INSTALLING NEW FAUCET

## TOOLS AND MATERIALS :

Adjustable Wrench

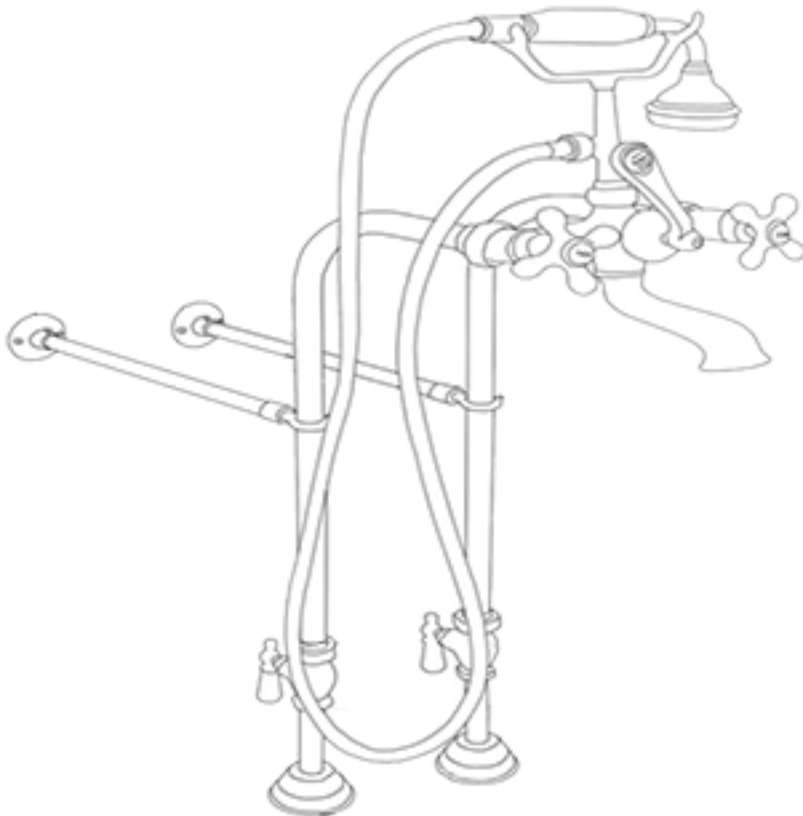
Pliers

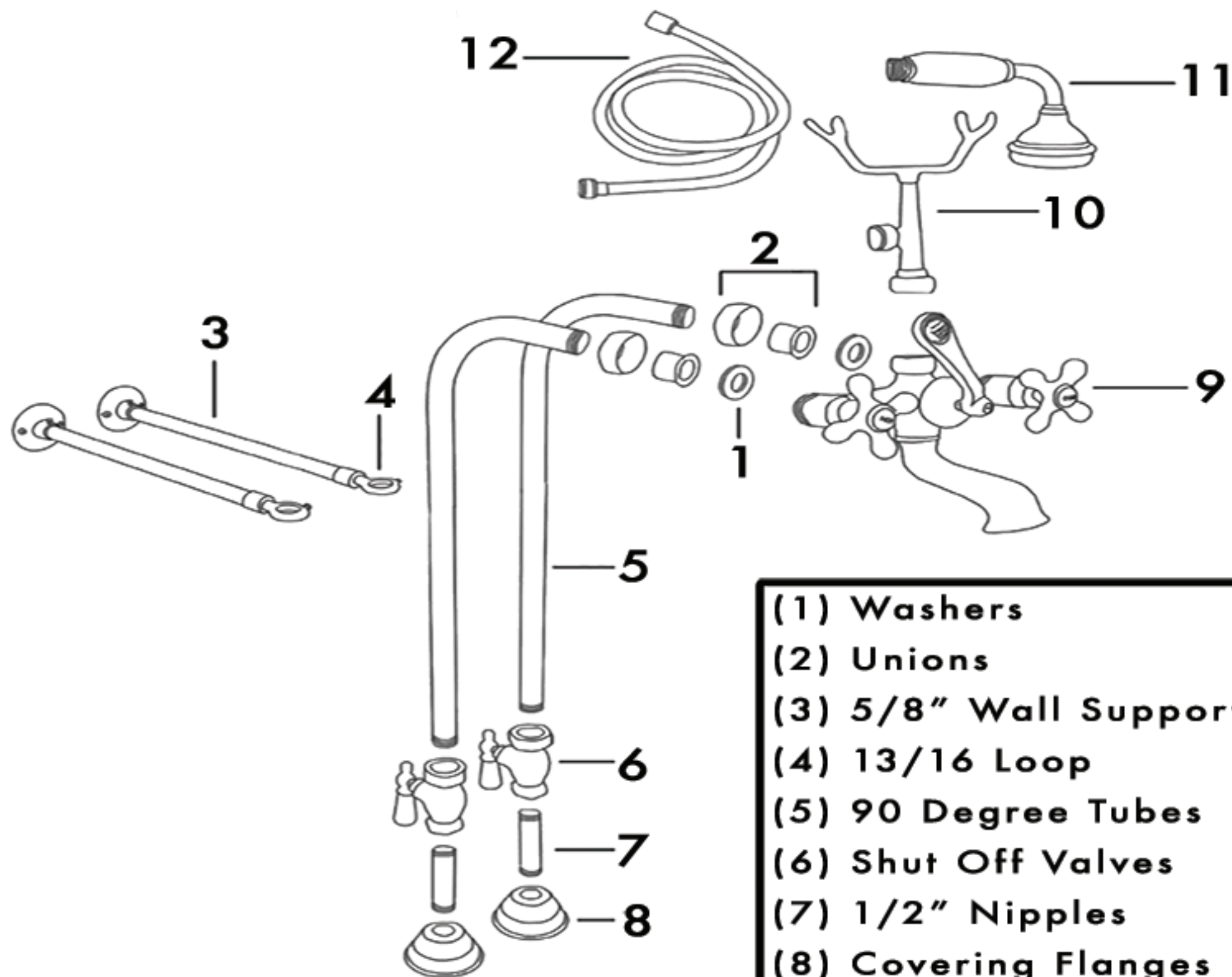
Pipe Wrench

Hacksaw

Screwdriver

Plumbers Tape



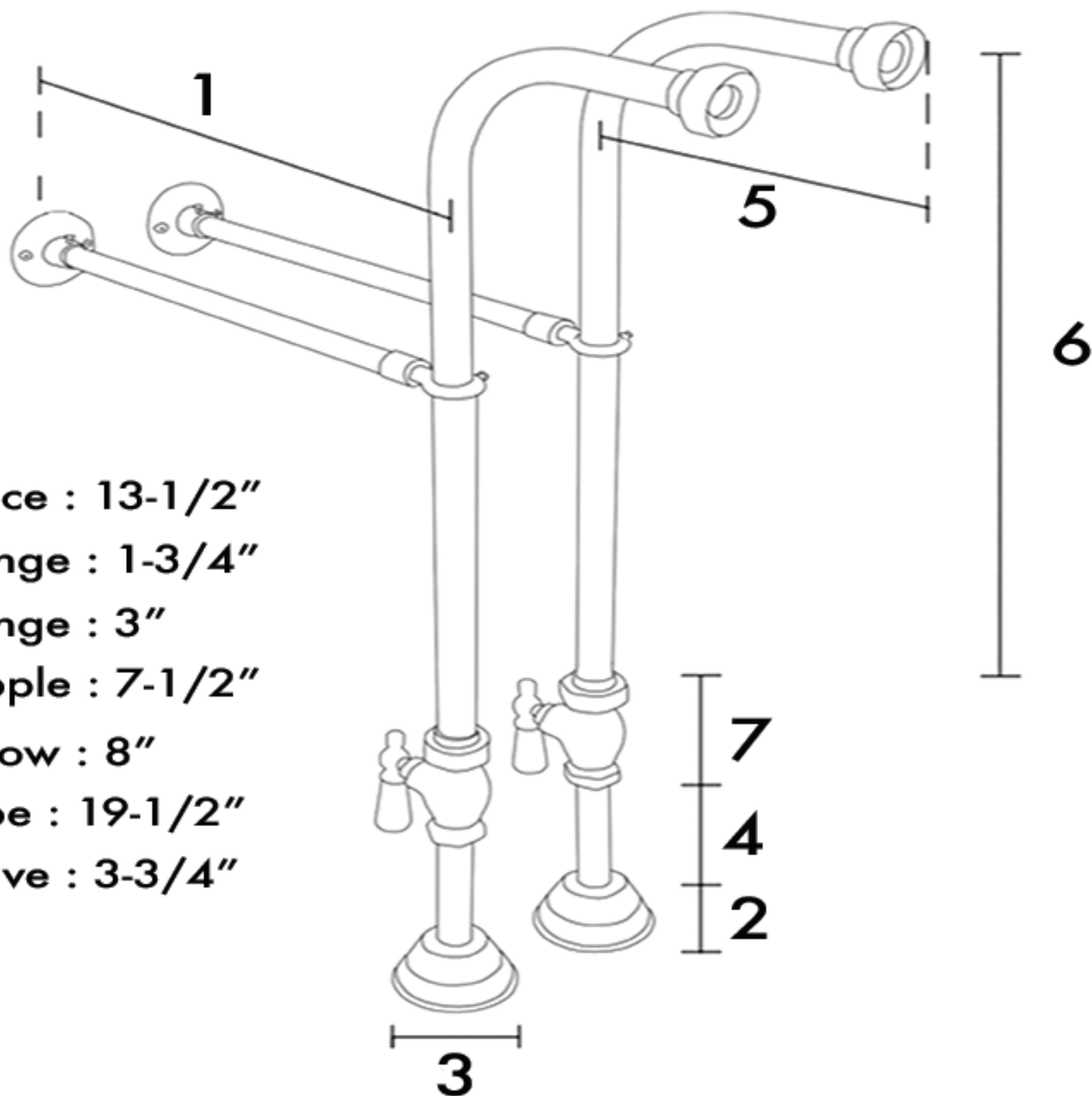


- (1) Washers
- (2) Unions
- (3) 5/8" Wall Support
- (4) 13/16 Loop
- (5) 90 Degree Tubes
- (6) Shut Off Valves
- (7) 1/2" Nipples
- (8) Covering Flanges
- (9) Faucet Body
- (10) Craddle
- (11) Handshower
- (12) Hose

# INSTALLATION

## Supply Lines

1. Shut off the water supply before installation.
2. (Three different sized nipples are included to fit the height of any installation)  
The connection to the floor is 1/2" IPS female. Use Teflon Tape around the threads of the nipple then tighten the 1/2" x 6" nipple to the floor and place the floor flange over the nipple and screw to floor with screws that have been provided.
3. Set screw floor flange in place to nipple.
4. Place the covering flange supplied over the flange in the floor.
5. Screw valve onto the top side of the nipple using Teflon Tape on its threads. (if applying the wall supports) Slide the 13/16" loops over the freestanding tubes and thread tubes into the top side of the valve using Teflon tape.
6. Place wall support tubes in place (5/8 x 12") and cut to fit your application on the non-threaded end and set screw flange then screw to the wall.
7. Apply Teflon tape to thread of union couplings and connect them to the end of the bent risers. Place rubber washer in the end of the union and connect your faucet to the freestanding supply tubes.

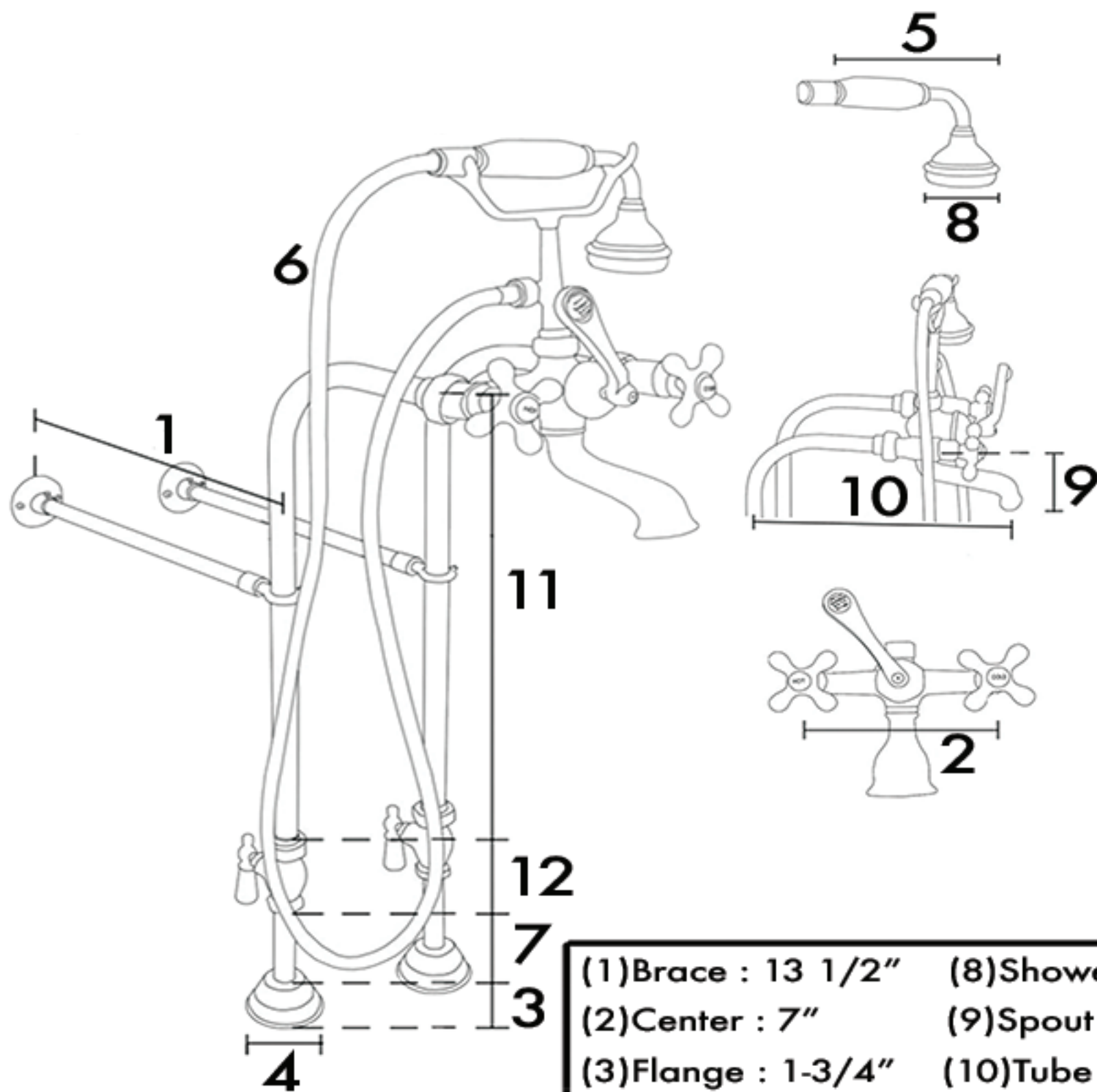


# INSTALLATION

## Faucet

1. After ensuring the installation of the supply lines was done properly and with no leaks, apply thread sealant to the outlets on the back of the faucet body and apply thread sealant to the threads of the riser on the supply lines.
2. Attach the faucet to the upper riser pipes of the water supply lines and tighten to secure. Allow atleast 24 hours for the sealant to cure
3. Install the hand shower and nozzle and any rubber sealing gaskets included.
4. When the installation is finished, turn on your water supply. Check to make sure that all connections are tight (no leaks) and that the hot and cold supplies are working properly. Turn the water on and allow the water to flow through the spout for approximately 60 seconds.





- |                      |                          |
|----------------------|--------------------------|
| (1) Brace : 13 1/2"  | (8) Shower Head : 2-1/2" |
| (2) Center : 7"      | (9) Spout : 13"          |
| (3) Flange : 1-3/4"  | (10) Tube : 19-1/2"      |
| (4) Flange : 3"      | (11) Valve : 3-3/4"      |
| (5) Hand Shower : 7" |                          |
| (6) Hose : 59-3/4"   |                          |
| (7) Nipple : 7-1/2"  |                          |