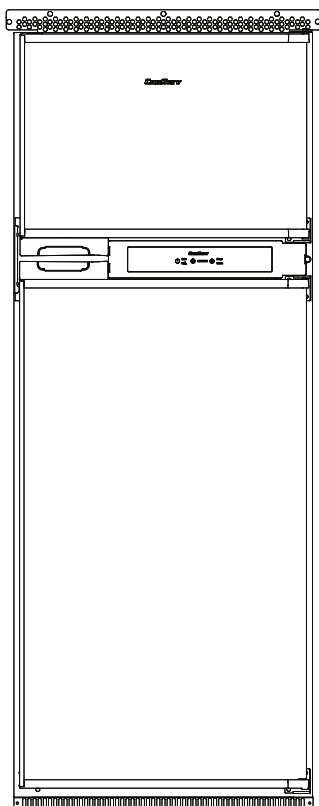




REFRIGERATOR-FREEZER

Model - RF 1012 DC S



OWNER'S MANUAL

Read the instructions carefully and keep for future reference

Warranty

Conserv Appliances undertakes to the consumer-owner to repair or, at our option, to replace any part of this product which proves to be defective in workmanship or materials under normal personal, family or household use, in the USA and Canada, for a period of one year from the date of original purchase. For commercial use, the product is warranted for a period of 90 days. During this period, we will provide all labor and parts necessary to correct such defect, free of charge, if the appliance has been installed and operated in accordance with the written instructions with the appliance. Ready access to the appliance, for service, is the responsibility of the consumer-owner. Service would be provided from Monday to Friday between normal business hours.

Exclusions

In no event shall Conserv Appliances be liable for incidental or consequential damages or for damages resulting from external causes such as abuse, misuse, incorrect voltage or acts of God. This warranty does not cover service calls which do not involve defective workmanship or materials covered by this warranty. Accordingly, diagnosis and repair costs for a service call which does not involve defective workmanship or materials will be the responsibility of the consumer-owner.

Specifically, the following work is not covered under warranty and does not constitute warranty work

Installation – e.g. blocking ventilation

Maintenance – e.g. cleaning appliance using solvents

Mishandling – e.g. breakage of door handle or shelves

Most work is covered. The defining factor is, has the machine malfunctioned (Conserv Appliances is responsible) or has the customer omitted or done something to cause the machine to malfunction (customer is responsible). Some states do not allow the exclusion or limitation of incidental or consequential damages, so the above limitation of exclusion may not apply to you.

WARRANTY SERVICE

This warranty is given by:

Conserv Appliances

10222 Georgibelle Drive, Suite 200
Houston, TX 77043-5249

For Service:

Call 1-800-776-3538

Email: Service@ApplianceDesk.com

Web: www.ApplianceDesk.com

Business hours: 9:00 am - 5:00 pm weekdays

You can register your Warranty by either of the following methods:

1. Scan the QR Code



1. Open Smart Phone
2. Open Photo
3. Scan QR Code
4. Click the Link

2. Online at: ApplianceDesk.com/Warranty

GENERAL

Since it is the responsibility of the consumer-owner to establish the warranty period by verifying the original purchase date, Conserv Appliances recommends that a receipt, delivery slip or some other appropriate payment record be kept for that purpose.

This warranty gives you specific legal rights, and you may also have other rights which vary from State to State.

All rights reserved. Manual subject to change without notice.

Safety

Please always follow the safety precautions listed below:

- Do not put acid or flammable or volatile materials inside the appliance.
- Do not puncture or damage refrigerant tubing.
- Unplug the unit immediately if you find any abnormal smell or smoke, and contact Customer Service.
- This appliance is not intended for use by children or persons with reduced physical, sensory or mental capabilities, or lack of experience and knowledge, unless they have been given supervision or instruction concerning use of the appliance by a person responsible for their safety. Children should be supervised to ensure that they do not play with the appliance.
- Use a dedicated power outlet and a three prong power socket, that is properly grounded.
- Do not use extension cords or ungrounded two prong adapters.
- Do not use the power cord or plug if it is damaged.
- When removing the power plug, do not pull on the cord. Grasp the plug firmly and pull it out from the socket.
- Unplug the unit first when doing maintenance or repair and when replacing the light bulb.
- Keep ventilation openings free of obstructions.

Safe Disposal

- Before discarding the refrigerator, remove doors and shelves in order to prevent risk of child entrapment.
- Dispose off this appliance in accordance with local regulations.

State of California Proposition 65 Warnings:

WARNING: This product contains one or more chemicals known to the State of California to cause cancer.

WARNING: This product contains one or more chemicals known to the State of California to cause birth defects or other reproductive harm.

Power Supply

The refrigerator can be operated with a 12V DC voltage supply.

CAUTION!

Check the voltage specification on the data plate to make sure it is the same as the power supply.

To avoid voltage drops and loss of performance, keep the connection cable as short as possible and directly connected from the power source to the DC wire connection of the unit. Therefore avoid additional switches, plugs or power strips.

When connecting to DC power supply, the circuit shall be protected by fuses with maximum of 15 Amps, the red cable of the DC power supply connects to the positive pole of the battery and the white cable connects to the negative pole of the battery.

It is recommended that the cable length should not exceed 2 meters and the cross section of the cable should not be less than 2mm². Please check the following cross section if the cable exceeds 2 meters long.

Disconnect the cooling device and all power source connections from the battery before you connect the battery to a quick charging device. Overvoltage can damage the electronics of the device.

The cable cross section	Maximum length/12V	Maximum length/24V
2.5mm ²	98.5"	196.8"
4mm ²	157.5"	315"
6mm ²	236.2"	472.4"
10mm ²	393.7"	787.4"

To protect the battery, the refrigerator switches off automatically if the voltage is insufficient (see below table).

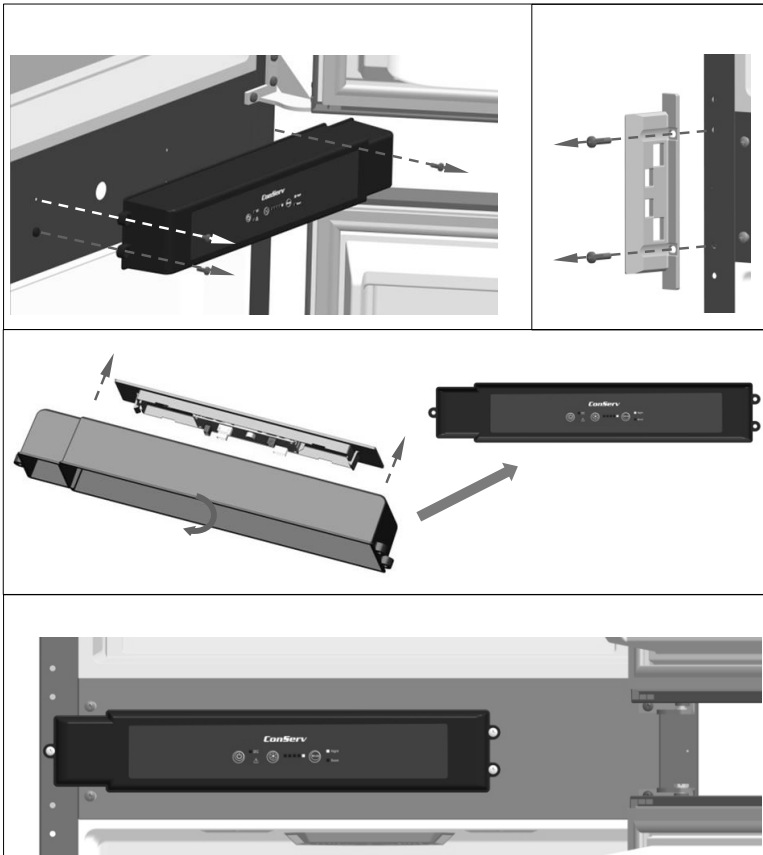
Rated Voltage	12V	24V
Cut-in voltage	10.9V	22.7V
Cut-off voltage	9.6V	21.3V

Reversing the Doors

The following set of instructions will guide you to reverse the doors.

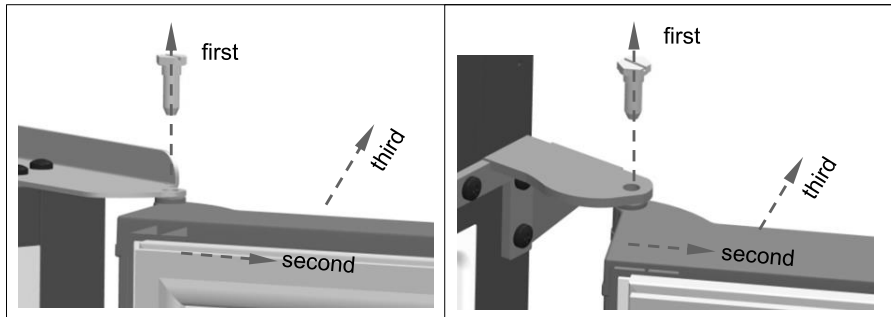
Reverse the Control Panel Box

1. Open the refrigerator and freezer doors 120° or more
2. Unscrew and remove the control panel box
3. Disconnect the wiring harness
4. Remove the base plate
5. Remove the control panel
6. Rotate the control box 180°
7. Reinstall the control panel on the control box
8. Screw the control box onto the other side



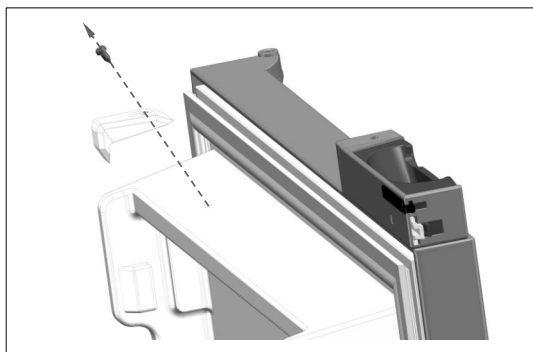
Reverse the doors and handles

1. Unscrew and remove the upper hinge pin
2. Pull the door(s) out about an inch and then up to separate from the bottom hinge pin
3. Remove the handle parts from the door(s)
4. Rotate the door(s) 180°
5. Reinstall the handle parts to the door on the other side



Remove and Reinstall the Magnet Housing Assembly

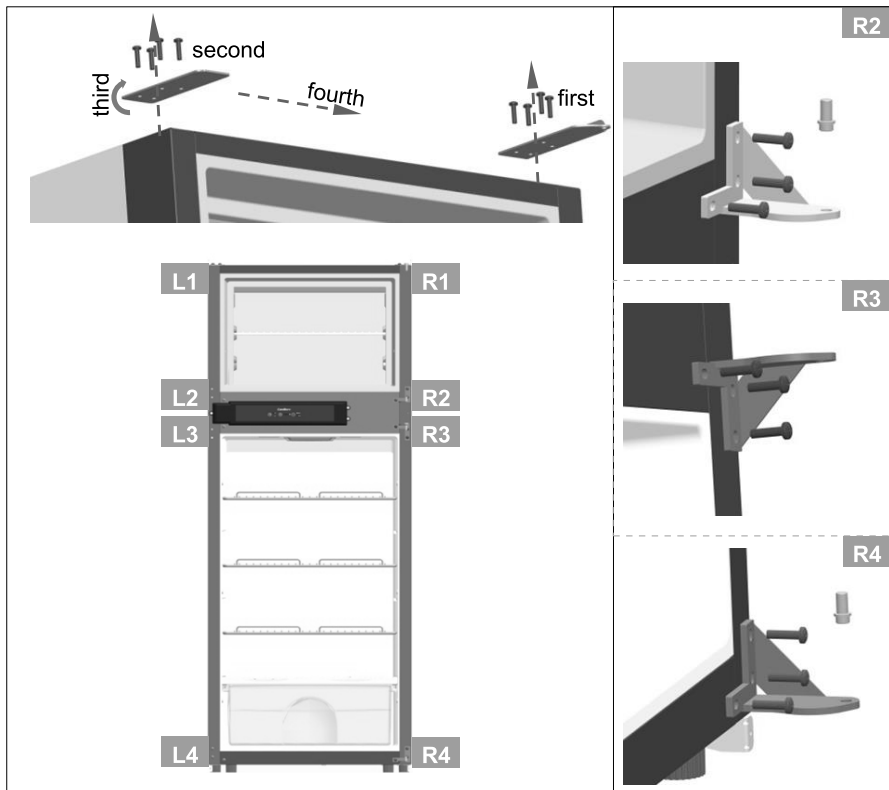
1. Unscrew and remove the magnet housing assembly from the refrigerator door
2. Rotate the door 180°
3. Reinstall the magnet housing assembly on the other side



Remove hinges and pins

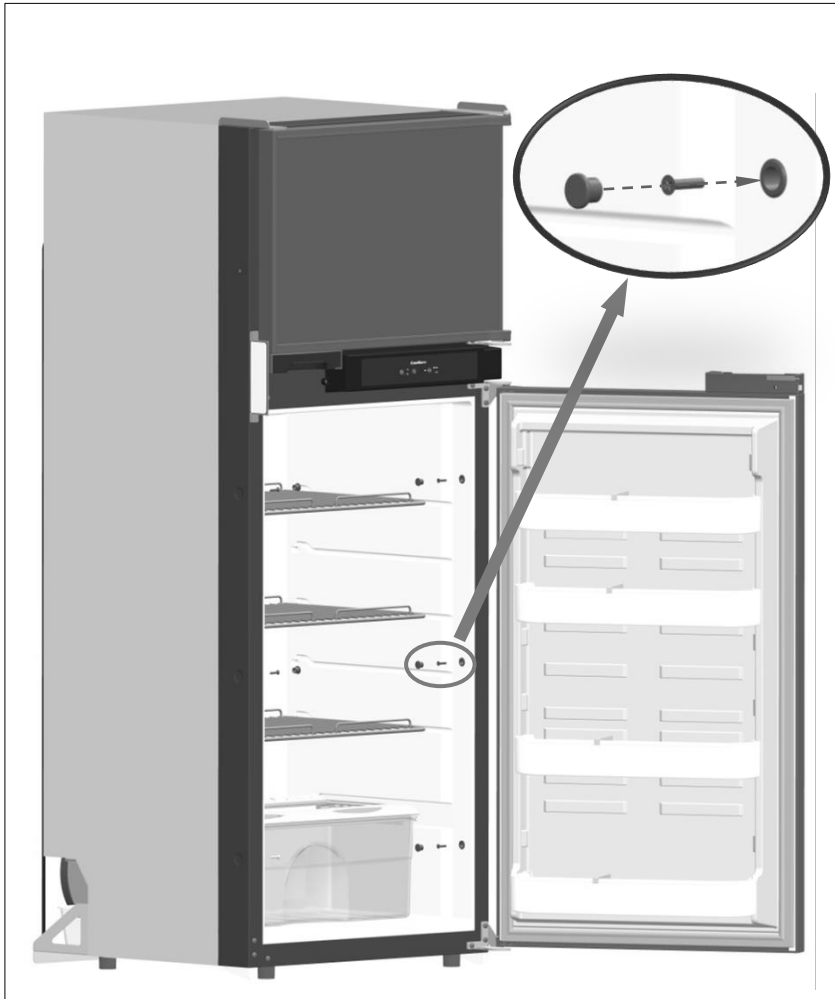
1. Remove right upper hinge and hinge hole plug
2. Rotate hinge hole plug 180° and reinstall in position R1
3. Take left upper hinge from accessory bag and install in position L1
4. Take upper hinge from accessory bag and install in position L2
5. Remove bottom hinge pin from position R2 and reinstall in position L2
6. Remove bottom hinge from position R2 and reinstall in position L3
7. Remove upper hinge from position R3 and reinstall in position L4
8. Remove bottom hinge from position R4 and reinstall in position L4
9. Remove the bottom hinge from position R4
10. Reinstall latch plate in position R2 and R3
11. Reinstall the doors

i NOTE Do not discard removed parts and keep them for future use!



Attaching the Refrigerator

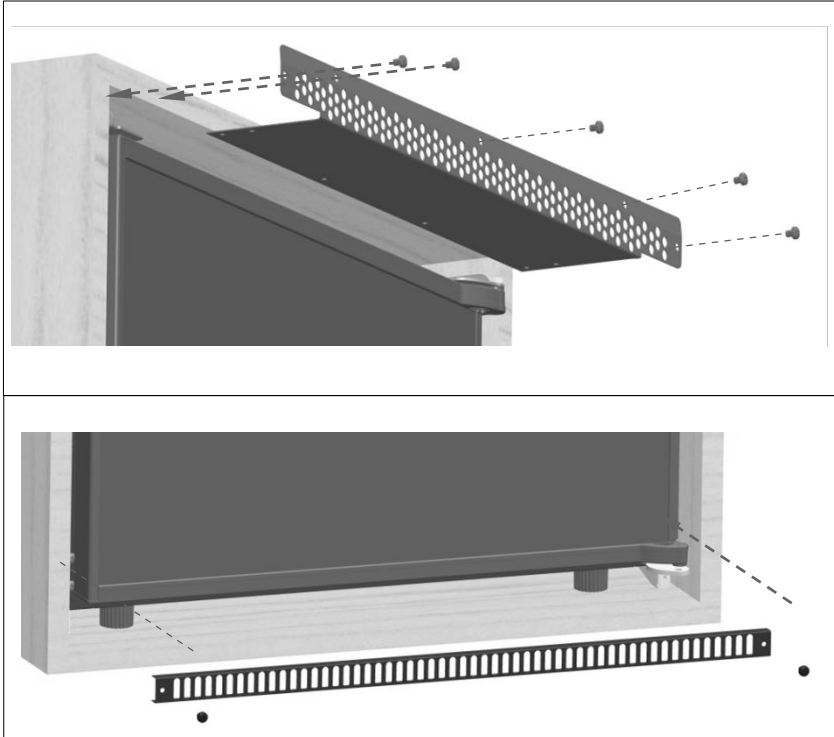
1. Connect the Refrigerator drain pipe
2. Open the refrigerator door
3. Place the refrigerator into the desired space
4. Attach the refrigerator using screws and cover the openings with plugs



Attaching top and bottom grills

1. Push the top grill into the recess
2. Attach it in place using screws
3. Push the bottom grill onto the mounting bracket

Ensure the ventilation grills are not blocked or covered.



Operation

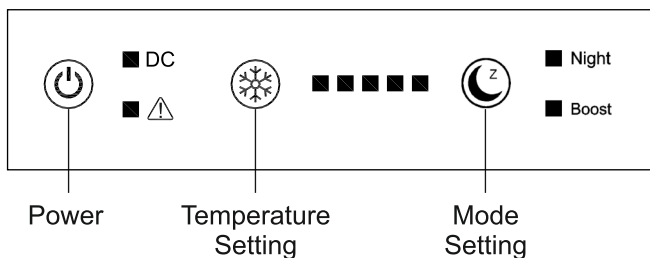
This refrigerator is made for use in a recreational vehicle.

The appliance is designed to be operated with 12V DC supply.

Place the refrigerator in a well-ventilated place. Maintain space around and behind the refrigerator, and do not cover or block the grill on the rear cover plate of compressor at the back of refrigerator.

Let the refrigerator stand upright for 6 hours before turning it on. Let it cool for 4 hours before putting food in.

Control Panel




Power on

Press the Power button (⏻) for 1 second. A beep will sound and all the indicator lights will illuminate for 10 seconds and then go off, except for the DC indicator light, which will remain on. It will take a few moments for the compressor to start working.

Press the Power button (⏻) for 3 seconds to power off the unit. A beep will sound and all indicator lights will go off.

Temperature Setting


Press the Temperature Setting button  to set the level of cold. Each time you press this button, the 5 indicator lights to the right will illuminate, with one light being the least cold and all 5 lights illuminated showing the coldest setting. 3 lights is the default setting. After the temperature is set, the indicator light(s) will go off.

Temperatures for each setting are shown in the table below:

Light	●○○○○	●●○○○	●●●○○	●●●●○	●●●●●
Refrigerator	42.8~50°F	39.2~46.4°F	35.6~42.8°F	32~39.2°F	28.4~35.6°F
Freezer	1.4~14°F	-2.2~10.4°F	-4~6.8°F	-5.8~5°F	-7.6~3.2°F

Mode

There are 2 modes of operation – Night and Boost.

Press the Mode button  to select the operation mode.

Night: The fan and compressor operate at low speed, to reduce noise.

Boost: The compressor operates at normal speed for normal cooling.


Refrigerator Fault Alarm

If a fault occurs, a beep will sound and the indicator lights will flash in a specific pattern to diagnose the type of error. The indicator lights flash 5 times every 5 seconds. If multiple errors occur at the same time, the lights will display in a loop every 5 seconds. Beeping will continue until the problem is resolved or any button is touched.

The table below shows the indicator light patterns, the error and the solution.

Light	Error type	Solution
●○○○○	Ref temperature sensor failure	Change the sensor
○○○○●	Ambient temperature* sensor failure	Change the sensor
○○○○○	Ambient temperature* over 131 °F (55°C)	Ventilate or reduce the ambient temperature
○○●○○	Door not closing	Close the door or change part 47

Compressor Fault Alarm

If a fault occurs in the compressor, the Warning Light  will illuminate.

The light will flash every 3 seconds. The number of times it flashes corresponds to the error code. The codes, error descriptions, possible causes and remedies are listed in the table below.

Error Code	Error type	Possible cause	Solution
1	Voltage failure	The input voltage is outside the set range	See section on Power Supply
2	1A Fan current fault	Fan current output current is greater than 1A	Check or change Condenser fan
3	Starting fault	Compressor motor is blocked or the system pressure is too high	Power off the refrigerator for 10 minutes
4	Minimum speed failure	Compressor load is too large or the motor speed is too small	Check or change the compressor
5	Temperature controller failure	Controller shell temperature over 185°F (85°C)	Ventilate or reduce the ambient temperature
6	Controller hardware failure	The controller detects abnormal parameters	Change the driver of compressor

Defrosting

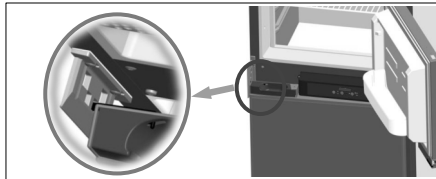
When ice builds up at the back wall of the refrigerator or freezer, turn off the appliance. Let the ice melt and clean the appliance before turning it on again.

Removing Shelves and Door Bins

To remove shelves, lift the back of the shelf up slightly and pull out. To remove door bins, lift up 2" and pull out.

Storage

If the refrigerator is not being used for a long period of time, power it off by disconnecting the DC power supply. Empty, defrost and clean the appliance and leave the door open for ventilation. Push out the vent lock on the door handle assembly.



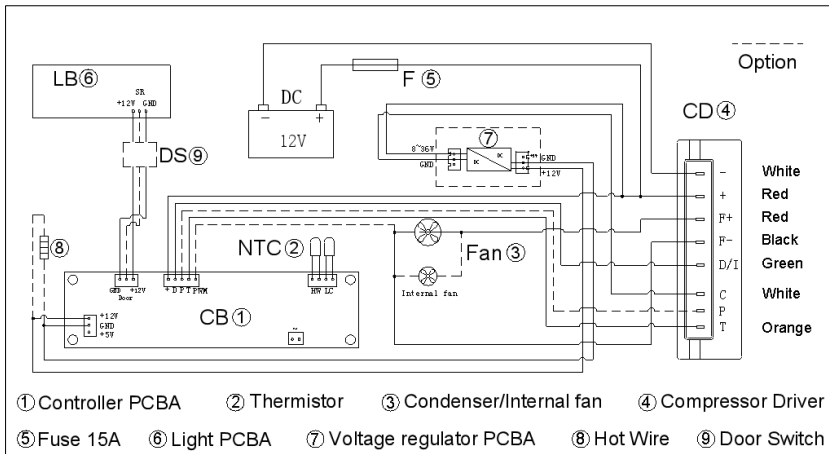
Maintenance

- Always remove all items and unplug the unit before cleaning.
- Clean inside, behind and around the refrigerator regularly, using water and mild detergent, and a damp cloth (not wet).
- Never use boiling water, harsh cleaning chemicals or abrasive materials.
- Clean the door gasket regularly to ensure that the door closes and seals properly.
- Dry all surfaces thoroughly.

Technical Specifications

Model No.	RF 1012 DC S
Total volume	9.53 cu. ft.
Freezer volume	2.47 cu. ft.
Connection voltage	DC 12V
Rated current	8A
Rated Power Nomal/Eco	75W/45W@77°F
Energy consumption	Normal 0.69kW.h/24h@ 39°F/77°F Eco 0.55kW.h/24h@ 39°F/77°F
Default temperature	Freezer -4~6.8°F Refrigerator 35.6~42.8°F
Refrigerant (Quantity)	R600a (49g)
Dimensions	23" x 25" x 60"
Net weight	108 lbs
Foaming agent	C5H10
Inspection/Certification	ETL / E_{24} / RoHS

Wiring Diagram



To continuously improve our products, we reserve the rights to change some specifications in technical data & wiring diagram. Please check the refrigerator rating plate.

Troubleshooting

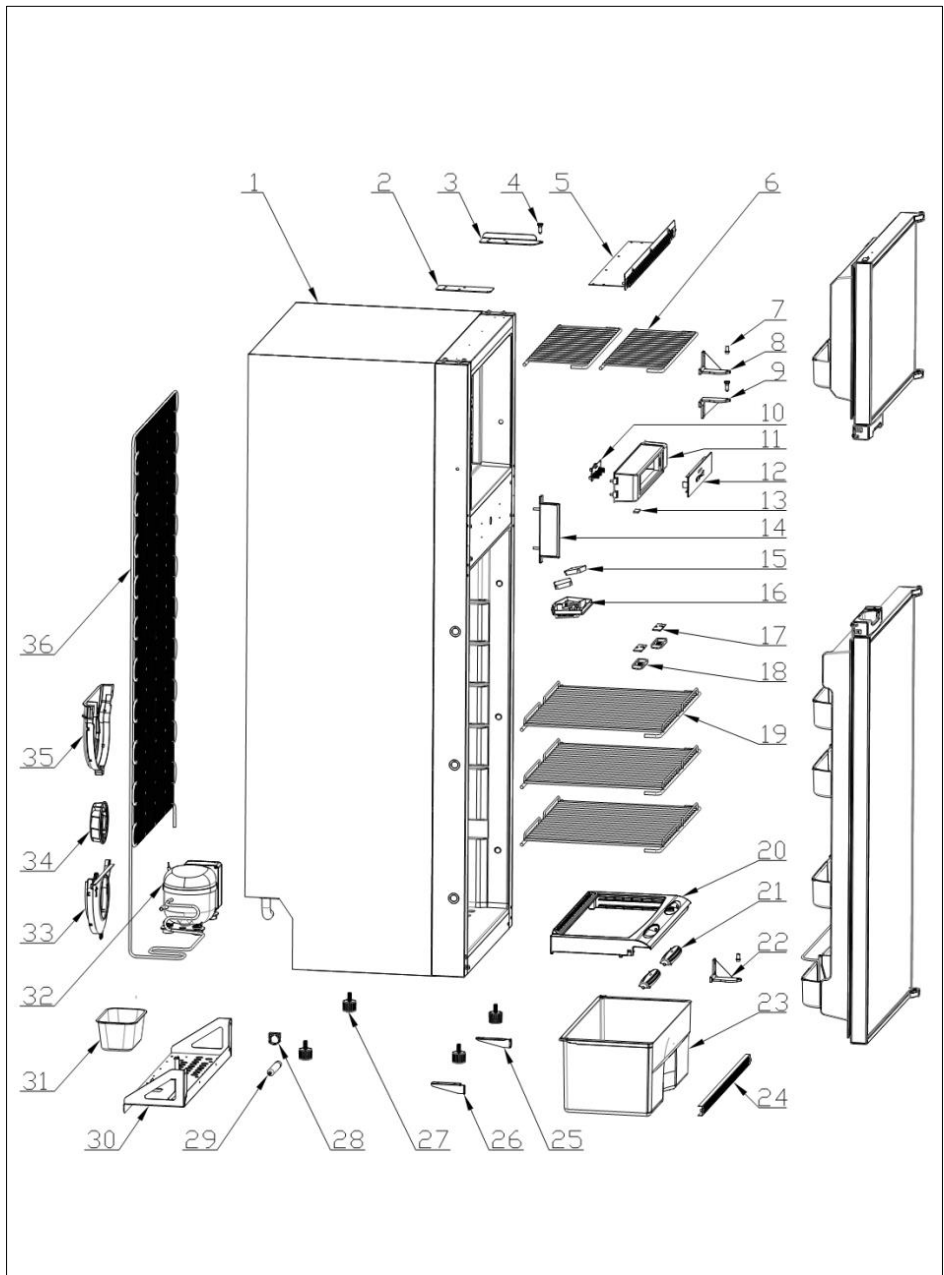
Before calling for service, please check the following issues first

PROBLEM	POSSIBLE CAUSE
Doesn't work	<ul style="list-style-type: none">• Power is not on or the unit is not connected to power• Low voltage• A fuse may be blown or the circuit breaker tripped• Plug not fully inserted into the wall outlet
Internal temperature not cold enough	<ul style="list-style-type: none">• Temperature setting is too warm• Door is not shut properly or opened frequently• Exhaust vent is obstructed• A large quantity of warm food has been placed in the unit• Close proximity to heat source or direct sunlight• Ambient temperature or humidity is very high
Appliance runs continuously	<ul style="list-style-type: none">• Temperature setting is too cold• Door not shut properly or opened frequently• Exhaust vent is obstructed• A large quantity of warm food has been placed in the unit• Close proximity to heat source or direct sunlight• Ambient temperature or humidity is very high
Internal temperature is too cold	<ul style="list-style-type: none">• Temperature setting is too cold
Noises	<ul style="list-style-type: none">• Parts are expanding and / or the refrigerant is circulating; this is normal• Floor is not flat, and the unit is not placed in a stable position.
Doors cannot be closed properly	<ul style="list-style-type: none">• The door is obstructed by items inside the unit.• The door gasket is not providing a good seal. Heat the gasket with a hair dryer.

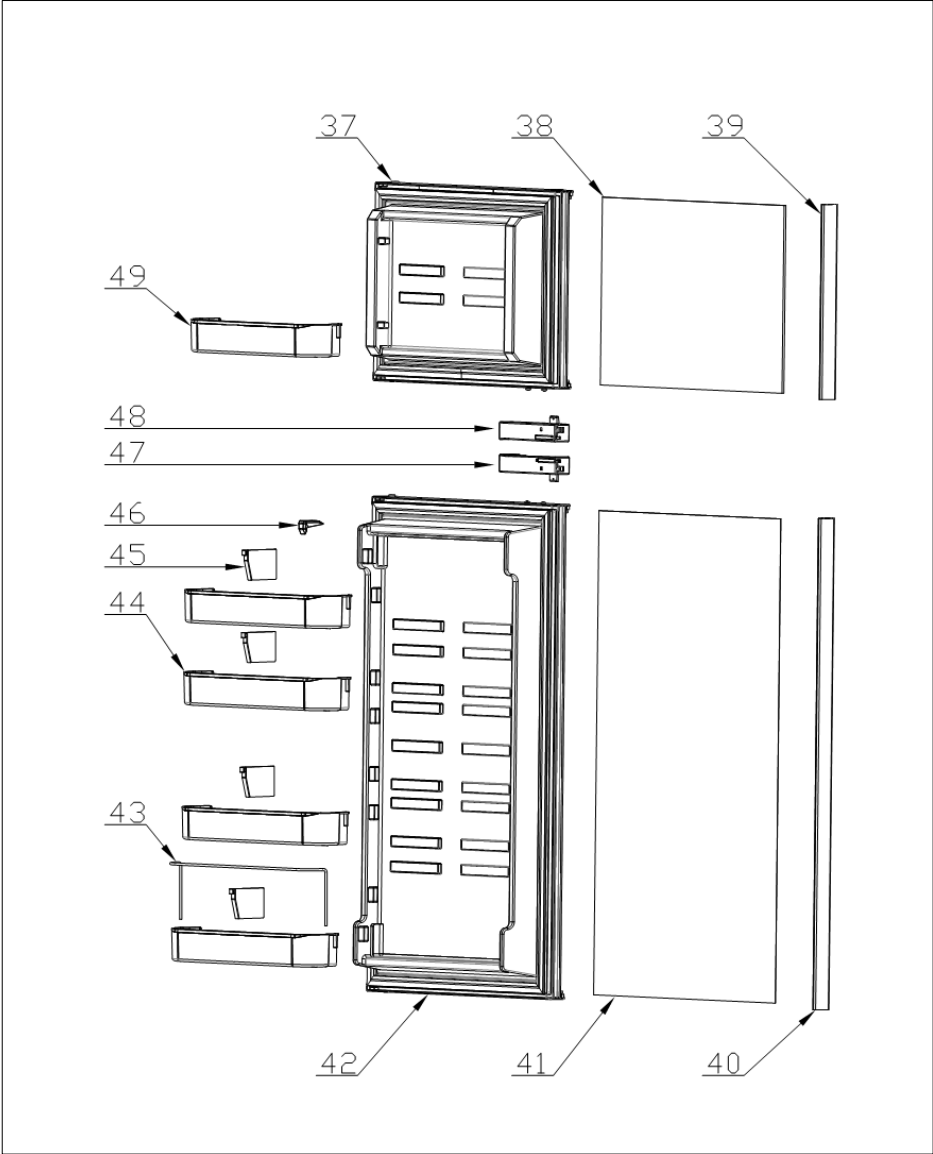
The following phenomenon is normal

- A gurgling sound is caused by the refrigerant flowing inside the system pipe.
- While the unit runs, heat is emitted from both sides of the cabinet.
- When the environment is too humid, the edges around door may have a little moisture, simply wipe it with dry cloth.

Cabinet



Door



No.	Part code	Description	Quantity
1	FC	Cabinet	1
2	01.01.27640198	Upper hinge hole plug	1
3	01.01.27640130	Right-top hinge	1
4	01.01.22502467P	Upper hinge pin	2
5	01.01.27640199	Top vent	1
6	01.01.27640101	Freezer shelf	2
7	01.01.22502468P	Bottom hinge pin	2
8	01.01.22502344	Bottom hinge	1
9	01.01.22502343	Upper hinge	1
10	01.02.09240259P	Control PCBA	1
11	01.03.18502230	Control housing	1
12.1	01.05.27641521	Control panel label	1
12.2	01.03.14540336	Control panel	1
13	OC	Door switch	1
14	01.03.22502571	Latch plate	1
15	01.02.14540206P	Interior fan	2
16	01.03.27640334	Fan housing	1
17.1	01.02.09240210P	Interior light R	1
17.2	01.02.09240211	Interior light L	1
18	01.03.09041317	Light housing and cover	2
19	01.01.27640102	Refrigerator shelf	3
20	01.03.22501326P	Crisper glass shelf	1
21	01.03.27501310	Ventilation regulator	2
22	01.01.22502344	Bottom hinge	1
23	01.01.27640161	Crisper bin	1
24	01.01.27640162	Bottom vent	1
25	01.01.27640162	Bottom vent right-bracket	1
26	01.03.02501219P	Bottom vent left-bracket	1
27	01.03.04040006P	Cabinet foot	4
28	01.04.14540406P	Drying filter bracket	1
29	01.01.27640139	Drying filter	1

No.	Part code	Description	Quantity
30	01.01.27640139	Compressor fixed base plate	1
31	01.01.27641115	Drip cup	1
32	01.02.00040218P	Compressor	1
33	01.03.27640398	Condenser fan outer cover	1
34	01.02.27640213	Condenser fan	1
35	01.03.27640399	Condenser fan inner cover	1
35	01.04.27640412	Condenser	1
37	FC	Freezer foam door	1
38	OC	Freezer door panel	1
39	01.03.22502304	Freezer door panel retainer	1
40	01.03.22502305	Refrigerator door panel retainer	1
41	OC	Refrigerator door panel	1
42	FC	Refrigerator door	1
43	01.01.22501485	Bottle retainer	1
44	01.03.22502240	Refrigerator door bin	4
45	01.03.08502163	Bottle divider	4
46	01.03.27640397	Magnet housing assembly	1
47	01.03.22502217	Lower hinge assembly	1
48	01.03.22502216	Upper hinge assembly	1
49	01.03.18502271P	Freezer door bin	1
NS	01.01.27640129	Left-top hinge	1
NS	01.01.22502343	Upper hinge	1
NS	01.02.09040068	Power cord	1
NS	01.03.04006533P	Power cord clamp	1
NS	01.02.09040073P	15 AMP Fuse	1

FC = Foamed component

OC = Option component

NS = Not shown

