

Circle Mirror

Instruction Manual

MI-Y20IN

MI-Y24IN

MI-Y30IN



 EST 9:00AM--17:00PM

 HJ-Customer-Service@outlook.com

 (909)637-7665 | (909)637-7593

1 Before Assembly

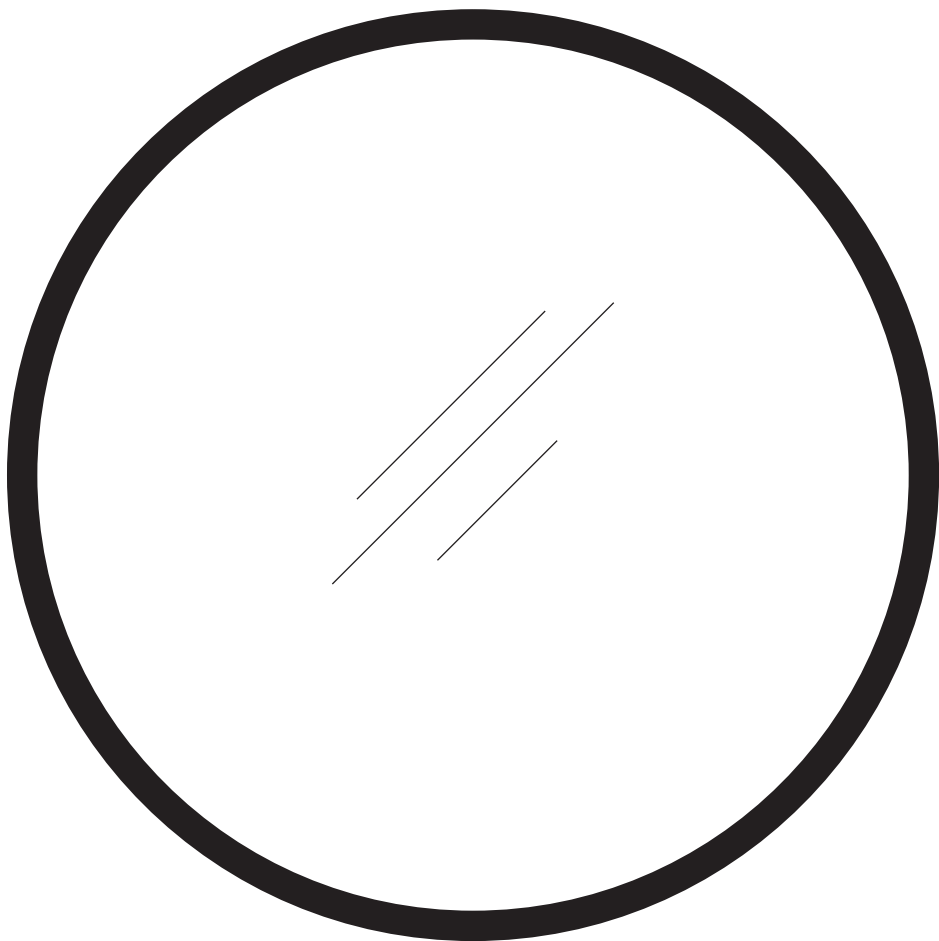
Assembly Tips

- Make sure the wall can bear the weight of the mirror.
- Do not use string or chain to hang the products.

Care Advice

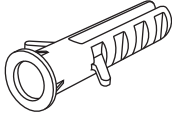
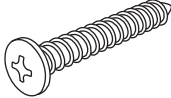
- Before using, clean with warm water and a soft, lint-free cloth.
- Check all the screws and bolts are tight every three months or as needed.
- Clean with an ammonia-free glass cleaner or detergent.
- Avoid spraying cleaners directly onto the mirror.

2 Package List

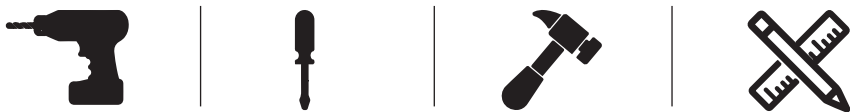


Mirror
x1

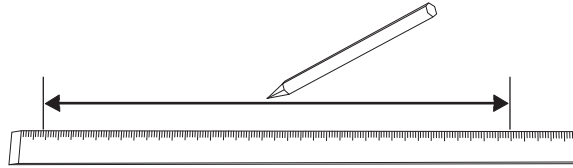
(Not Provided)

 Not Provided x1	 Screws x1
--	---

Tools Required (Not Provided)

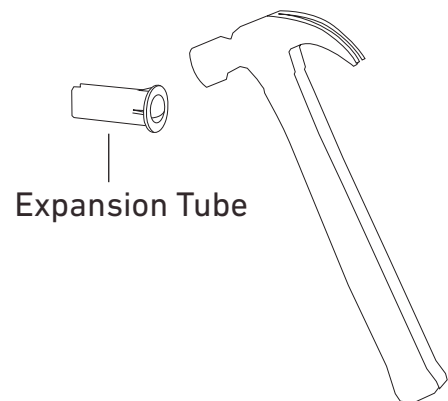
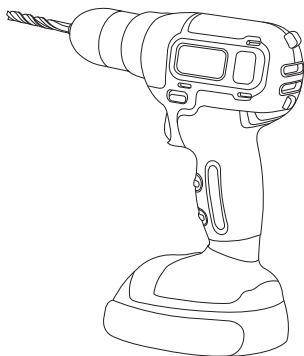


Step 1



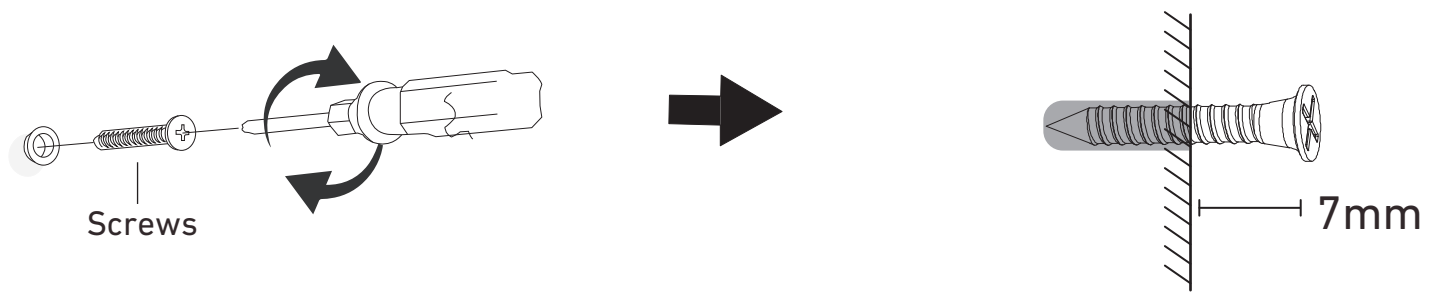
Confirm the distance of the punch in the wall.

Step 2



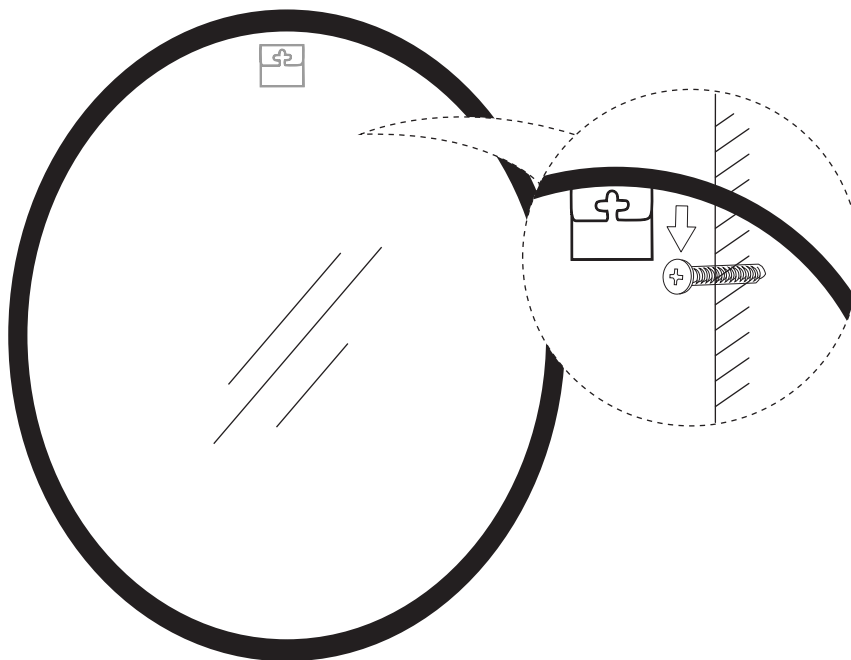
Drill holes at the marked positions on the wall. Hammer the Expansion Tube into the holes.

Step 3

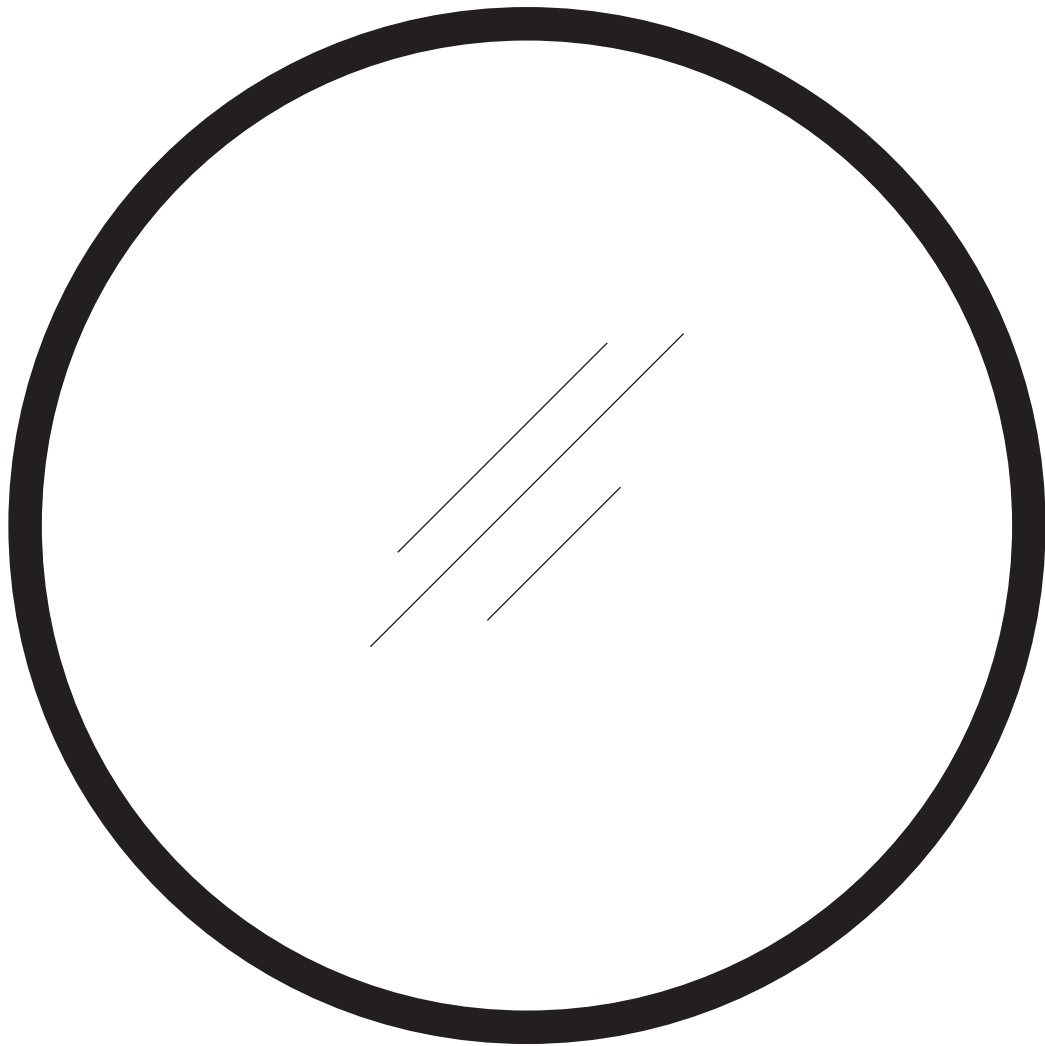


Fix the Screws into the Expansion Tube, leaving about **7mm** of the screws exposed.

Step 4



Hang the Mirror on the wall.



Technical Support

(909)637-7665 | (909)637-7593

Other Info

HJ-Customer-Service@outlook.com

Thank you for choosing this product. We strive to provide you with the best quality products and service in the industry. Should you have any issues, please don't hesitate to contact us.