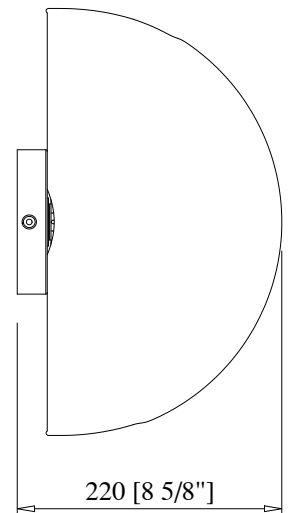
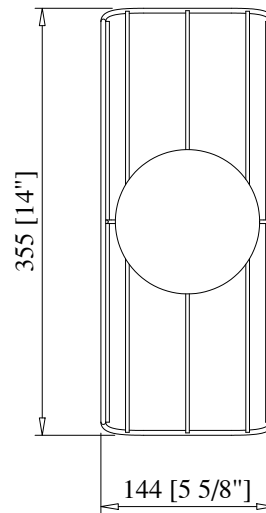
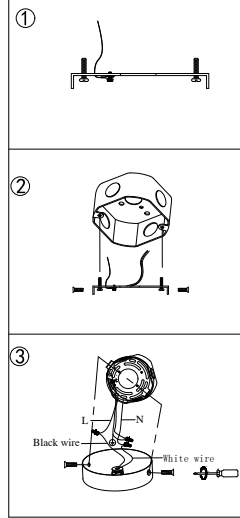
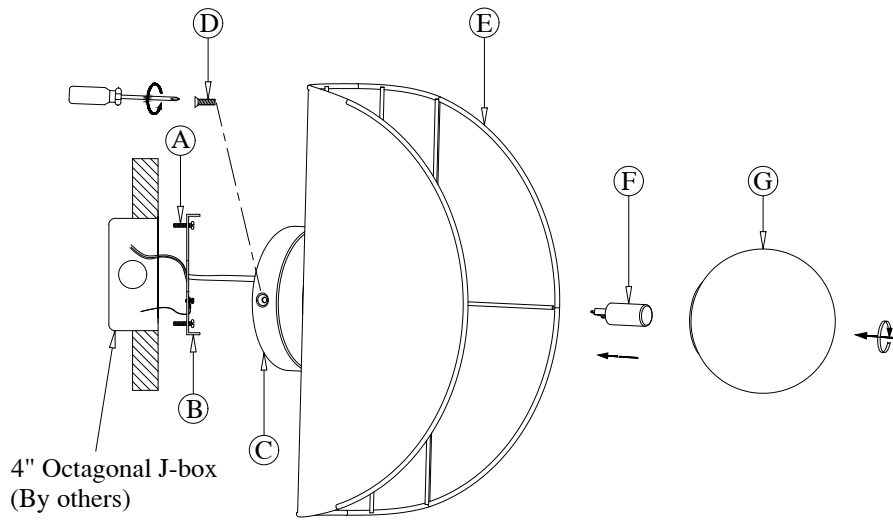


DIAGRAM OF INSTALLATION STRUCTURE

SKU No. :CE1009211

Product Size: L14"*W5.6"*D8.6"

Light Source: G9 LED Bulb



(A) Mounting Screw (2×)

(B) Mounting Plate

(C) Canopy

(D) Flat Screw (2×)

(E) Lamp Fixture Body

(F) G9 LED Bulb
(By others)

(G) Glass Shade

Installation instruction

1. Turn off the power
2. Dismantle the mounting plate subassembly as picture (1) from the lamp fixture body(E), then install the mounting plate(B) to J-Box with the mounting screws(A).
3. Connect the fixture to a suitable ground in accordance with local electrical codes.
4. Connect the White wire to the neutral power line wire with a wire nut.
5. Connect the Black wire to the hot power line wire with a wire nut.
6. Neatly place all wires and wire nut connections inside the J-box.
7. Install the canopy(C) to wall surface with the falt screws(D).
8. Insert a G9 LED bulb(F) into the the lamp-holder of lamp fixture body(E).
9. Screw the glass shade(G) into the lamp fixture body(E).
10. After finish the installation, turn on the power.