



PIONEER INDUSTRIES, INC.
3325 S. Garfield Ave.
Commerce, CA 90040
(800) 338-9468
www.pioneerind.com

INSTALLATION

Tools:



Adjustable Wrench



Plumbers Putty

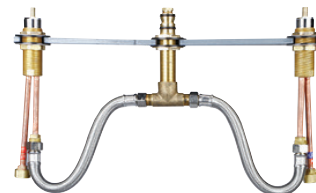


Teflon Tape



Rags

Model Number: 4300B



Warnings and Notes:

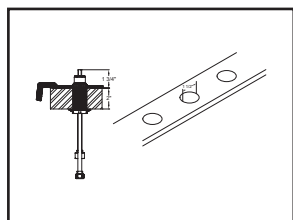
Check with local plumbing code requirements before installation.

This product should be installed by a local listed plumber.

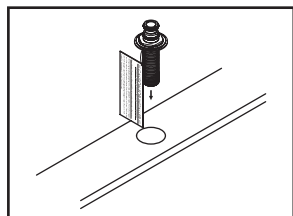
Do not use plumbers putty on threads.

Installation Steps:

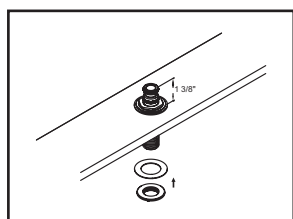
Two Handle Roman Tub Valve Set



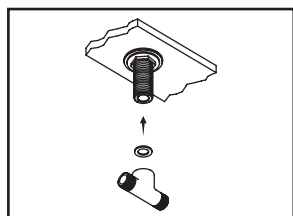
(1) Please follow the following requirement: This valve is designed for 8" to 16" center widespread installation, the diameter of three mounting holes is 1-1/2" and maximum deck thickness is 2". The valve height is 1-3/4" and shank height (without test plug) is 1-3/8" from finished surface. Note: extension kit is available for thicker deck.



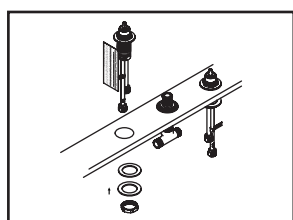
(2) Shut off both water supply lines. Remove test plug from top of the shank. Screw locknut onto shank from the bottom then slide rubber washer under locknut. Drop shank through spout mounting hole.



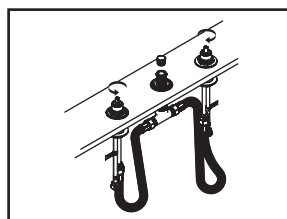
(3) Adjust locknut so that top of the shank is 1-3/8" above finished surface. Slide rubber washer and then securely tighten second locknut from bottom of the shank.



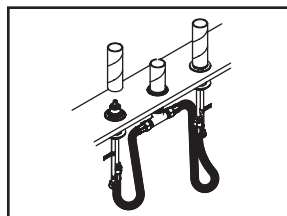
(4) Make sure rubber washer is inside the "T" connector, attach and tighten "T" connector to bottom of the shank.



(5) Insert valve through mounting hole. Adjust locknut so that the tip of stem is 1-3/4" above finished surface, adjust outlet of the valve to face center to ensure handle operates in proper direction, slide rubber washer, steel washer and tighten locknut from bottom of the valve. Install the other valve as the same procedure.



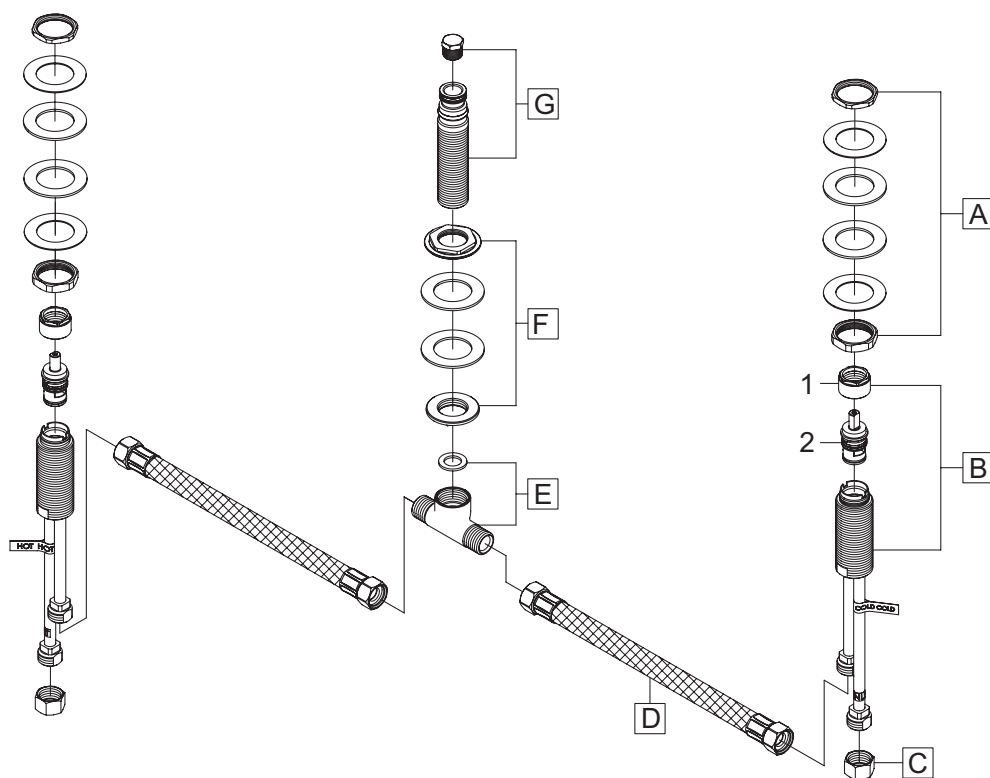
(6) Attach both flex connector hoses to outlet of the valves and "T" connector. Connect water supply lines to inlet of the valves. Apply Teflon tape on thread area of test plug, tighten test plug back to top of the shank. Turn on water supply lines and check for any leaks.



(7) Install mud guard on top of the shank and valves.

Exploded Drawing :

	ITEM #	DESCRIPTION
A	X-5400003	Valve Mounting Kit
B	X-3900005C,H	Side Valve-Cold,Hot
C	X-4900004	Supply Nut
D	X-4400063	Flex Connector Hose
E	X-4400029	T Connector & Washer
F	X-5400006	Shank Mounting Kit
G	X-5400005	Shank & Test Plug
1	X-4900022	Bonnet Nut
2	X-3900002C,H	Ceramic Stem-Cold,Hot



For more care information or trouble shooting inquiries
about your Pioneer product, please call:
Pioneer Industries, Inc. (800) 338-9468
Monday-Friday 8AM to 8PM EST (5AM to 5PM PST)
www.pioneerind.com