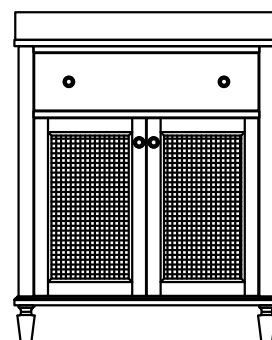
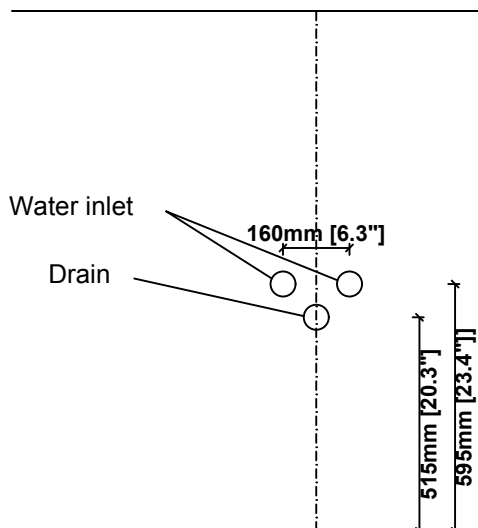
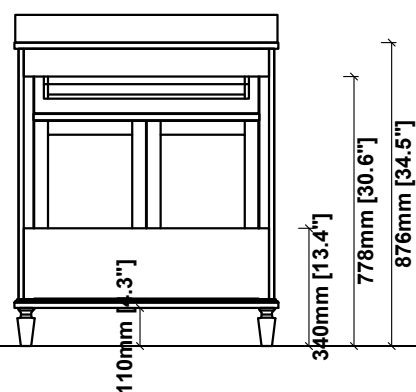
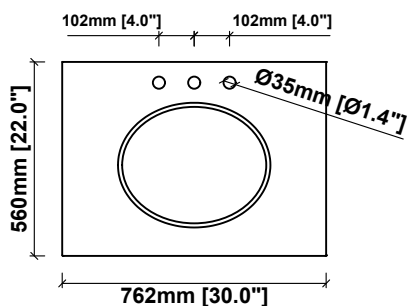


## DIMENSIONS



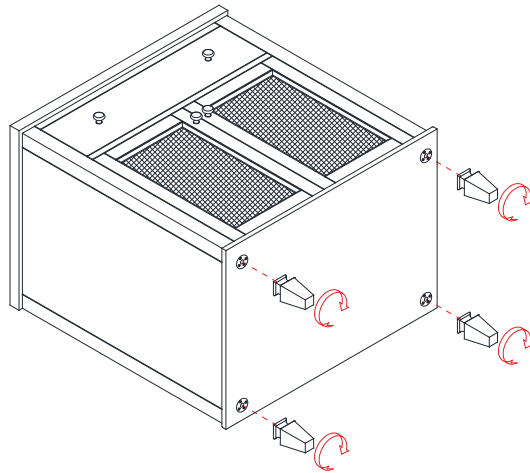
### WARNING!

*In the hole on the wall, please be sure to be careful to avoid the internal cables pipelines.*

## MATERIALS & TOOLS

*safety glasses, pencil, level, Tape measure, stud finder Assorted screwdrivers, Assorted Wrenches, Drill, Screw gun, Caulking gun, Hammer. Screws, Nachors/Molly screws.*

- Install the vanity feet, Two people are required to turn the vanity after finished



- If the floor is uneven, the adjustable feet levelers can be rotated to raise the vanity to the desired height.

