



MODEL: F2-0014

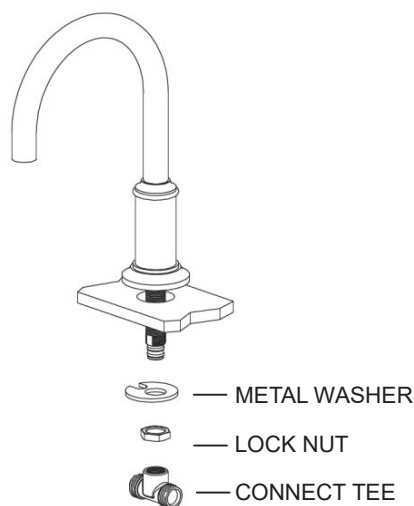
## LAVATORY FAUCET INSTALLATION GUIDE

### BEFORE YOU BEGIN

- 1) Shut off water supply.
- 2) Carefully inspect waste and supply tubing for signs of damage.
- 3) Replace waste or supply tubing if necessary

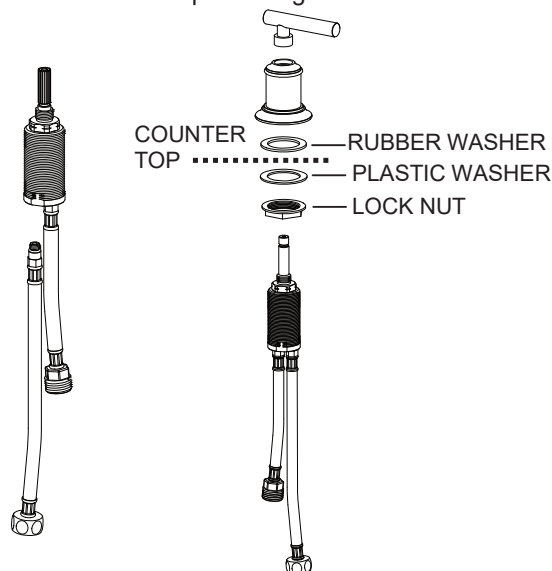
### A) SPOUT INSTALLATION

- 1) Remove lock nut and connect tee.
- 2) Locate mounting hole and insert spout into deck or lavatory.
- 3) Screw and tighten washer, lock nut onto the shank and secure the spout
- 4) Screw and tighten the connect tee to the shank.

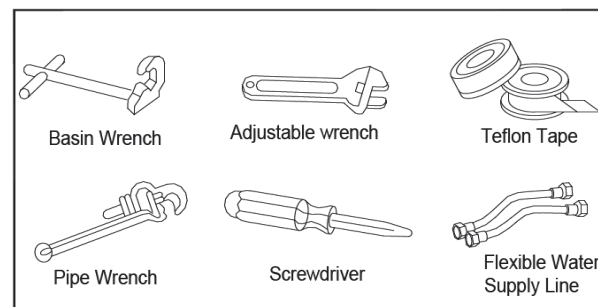


### B) HANDLE VALVE INSTALLATION

- 1) Assemble the longer flexible hose with valve body.
- 2) Place lower plastic washer and lock nut over valve body.
- 3) Insert valve body from under the sink.
- 4) Place upper rubber washers and escutcheon on valve spindle.
- 5) Adjust position of valve body. Secure valve body with lock nut and escutcheon.
- 6) Place handle onto spindle. Tighten handle with screw.



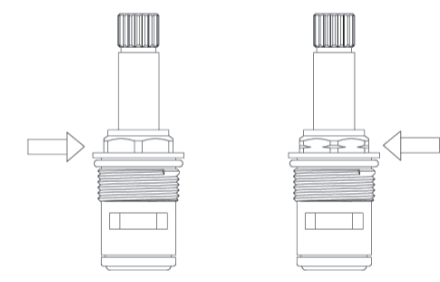
### TOOLS AND MATERIALS



VIDEO  
INSTRUCTION

### \*\* CARTRIDGE IDENTIFY \*\*

If need cartridge replacement, please remove escutcheon and identify the cartridge hex base as below. Offer the information to our service team.



### W/O MARK

Hot side  
Open: counterclockwise

### WITH MARK

Cold side  
Open: clockwise

### C) VALVE HOSE INSTALLATION

- 1) Connect the longer flexible hoses to supply tee.
- 2) Secure hoses with wrench. Do not over tighten.
- 3) Circle the excessive part of hoses as shown in figure below.

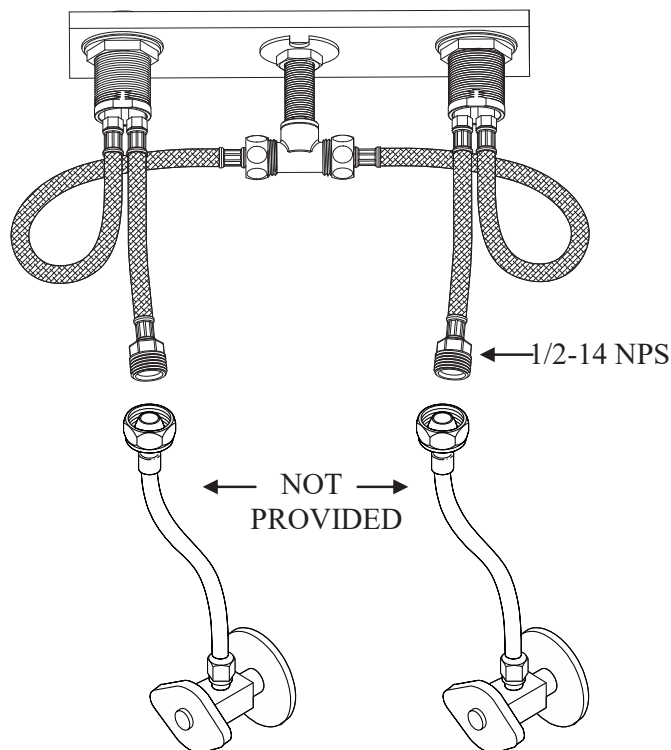
### D) SUPPLY CONNECTION

**\*\* Connect Hoses not provided \*\***

- 1) Identify stop valve thread specific, choose matching hoses from store.
- 2) Connect hoses to angle stops. Tighten all connections.

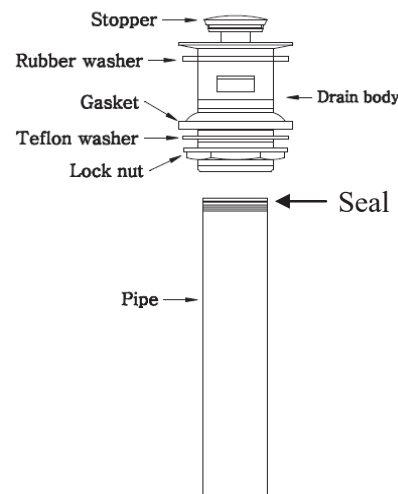
**\*\*\* VERY IMPORTANT \*\*\***

Flush out water for two minutes before connect hose to faucet valve.  
(This act to avoid debris trapped the flow regulator)



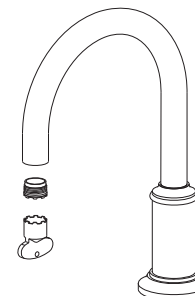
### E) DRAIN WASTE INSTALLATION

- 1) Disassemble the drain. Only rubber washer to stay with drain body.
- 2) Unscrew the tail piece pipe to seal thread, assemble back to drain body.
- 3) Insert drain body through sink.
- 4) Attach the gasket, Teflon washer and tighten the lock nut.



### F) INSTALLATION CHECKOUT

- 1) Ensure all connections are tightened properly.
- 2) Turn on main water supply.
- 3) Turn on and off cold and hot water respectively.
- 4) Turn on both hot and cold water and turn off. Check for leaks.
- 5) Remove the aerator with attached key. Check for debris. Clean if necessary.
- 6) Reinstall aerator.



**COMPLETE INSTALLATION**