

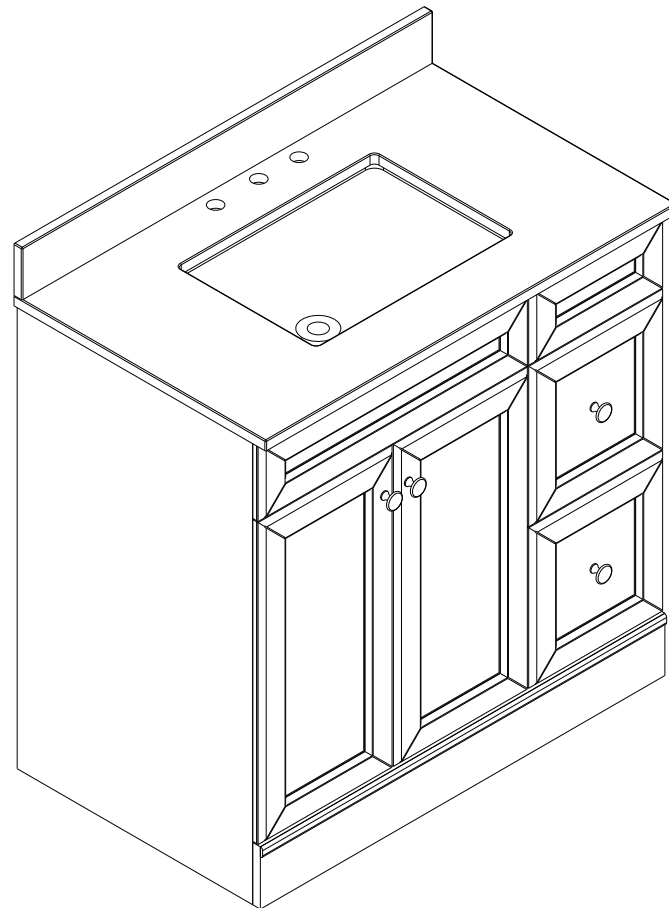
BATHROOM

VANITY

COLLETION

THREE ONE 36

INSTALLATION MANUAL



Installation Manual

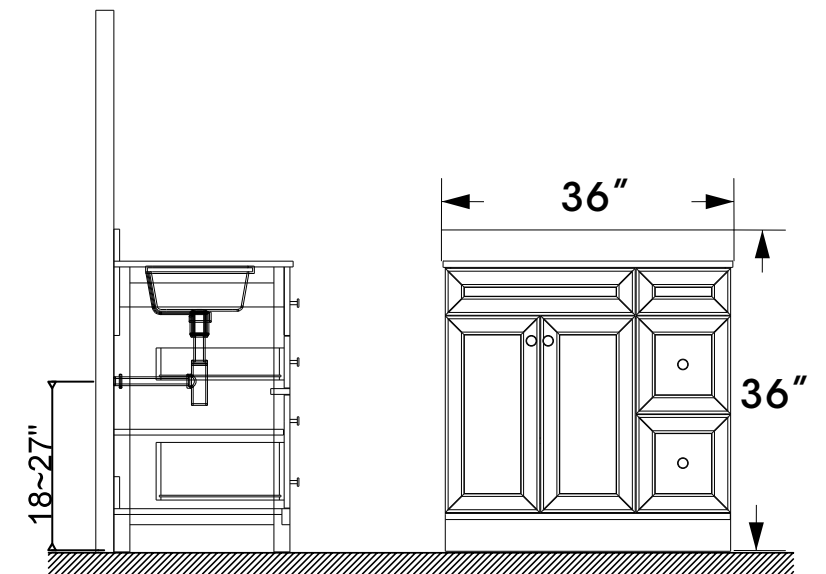
1. Carefully read the instructions before starting the Installation.
2. This vanity should be installed by an experienced Plumber.
3. Drain pipe and drain trap are not supplied. Connect to an existing drain pipe.

If you are missing any part, please stop and contact us immediately at: service24houroonline@gmail.com

951-433-9027 408-728-6543

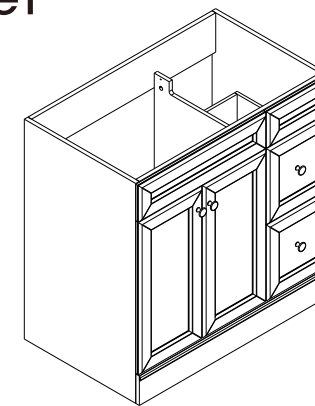
PARTS LIST

Prior to installation, please check the items you have received against the packing list. Report any missing items to your local dealer immediately. Protect all surfaces from sharp objects, high heat sources, direct prolonged sunlight and chemical hazards.

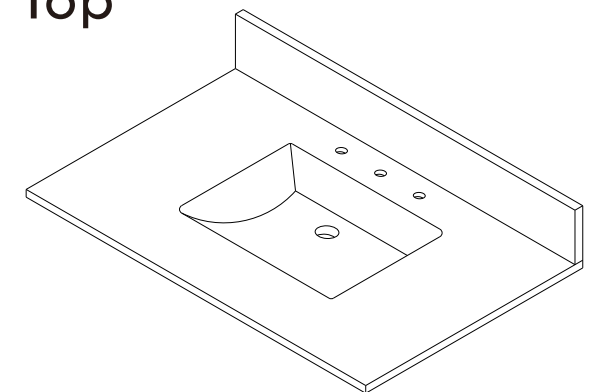


Professional installation is recommended.

Cabinet



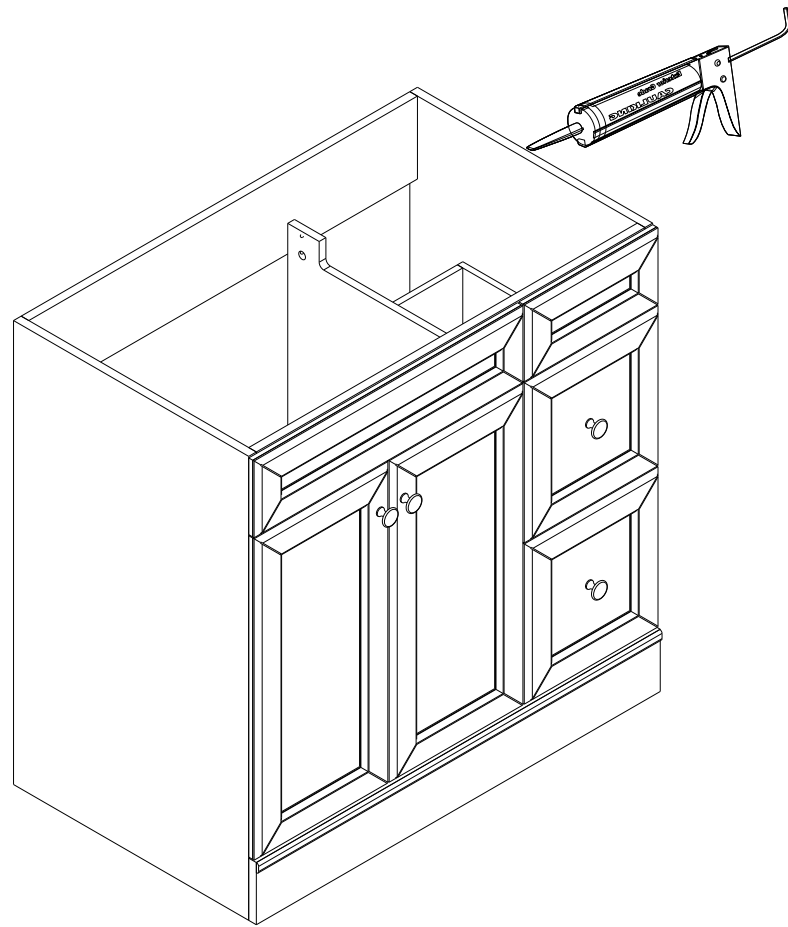
Top



REQUITED TOOLS (not supplied)

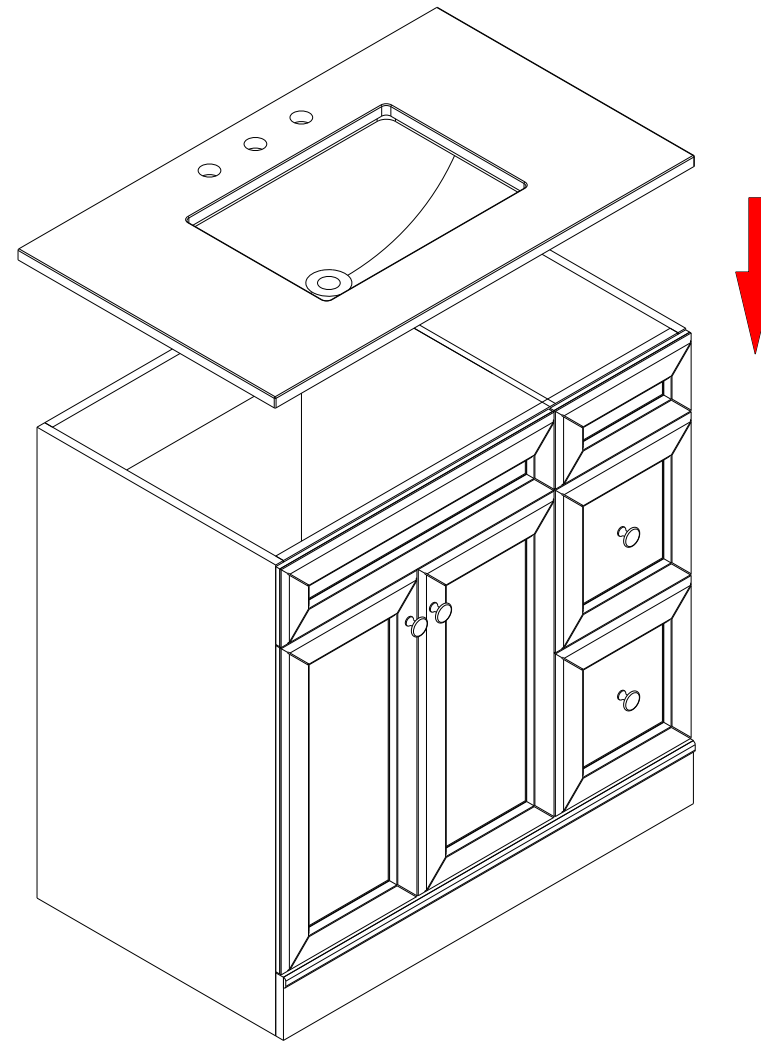


Top installation



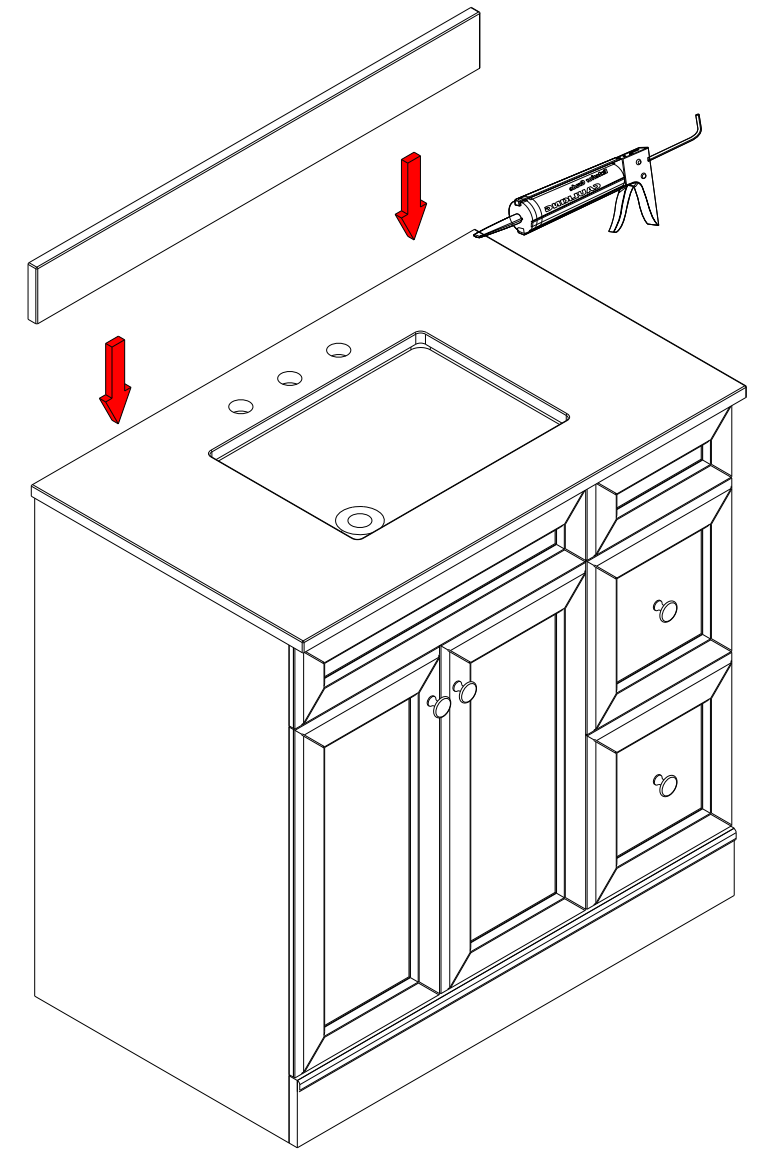
Apply adhesive around the top edges of the cabinet

STEP 1



Carefully place the top over the cabinet

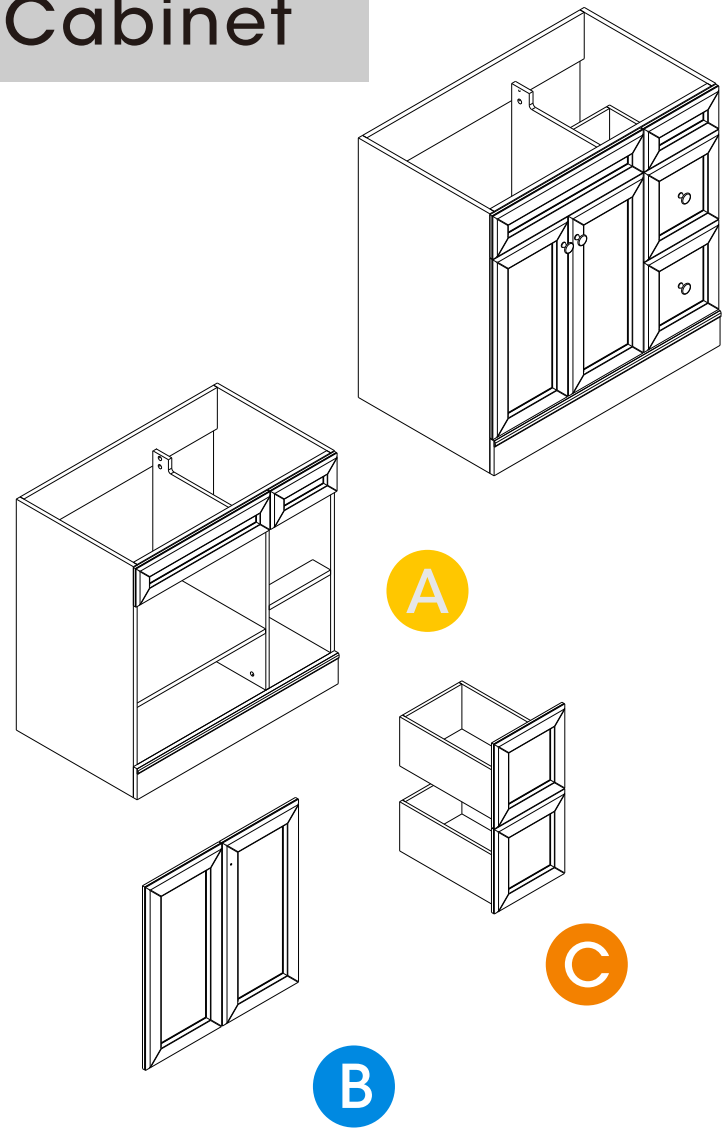
STEP 2



Align and center

STEP 3

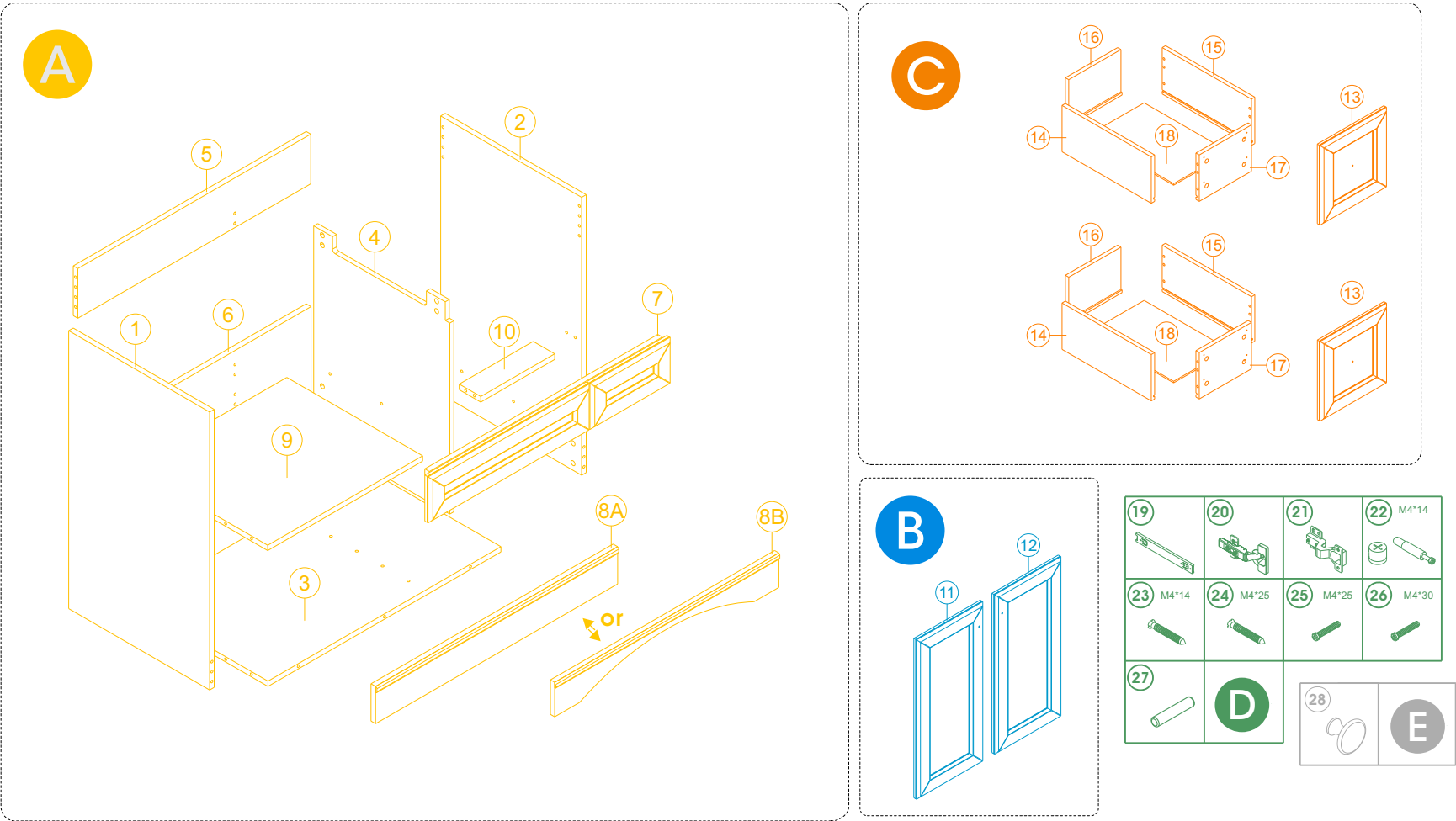
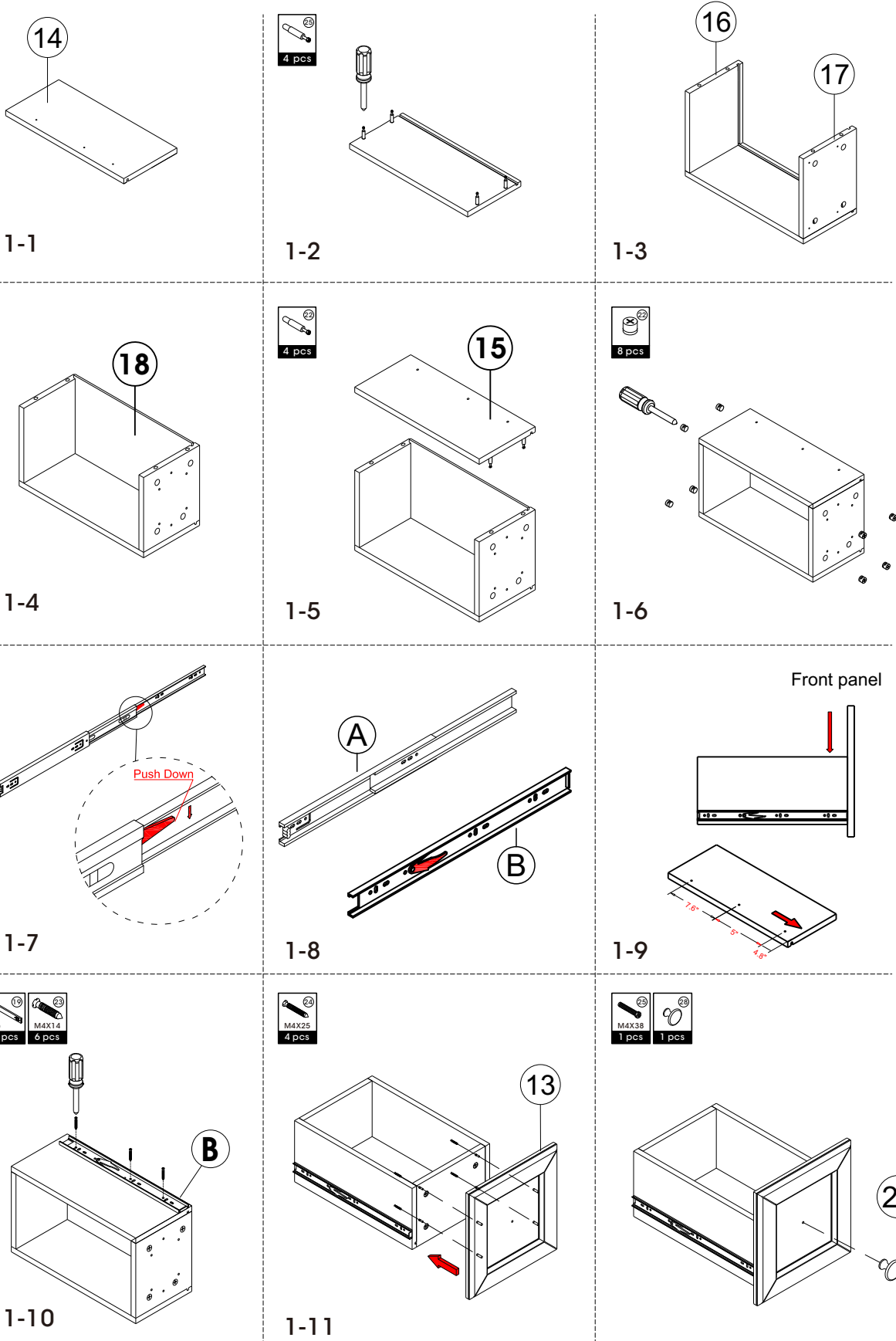
Cabinet



PART	NO.	Description	Quantity	Size
A	1	Left Side Board	1	35" * 21" * 0.71"
	2	Right Side Board	1	35" * 21" * 0.71"
	3	Bottom Board	1	34.2" * 20.2" * 0.71"
	4	Connect Board 1	1	26.6" * 20.2" * 0.71"
	5	Back Board 1	1	34.2" * 6.3" * 0.71"
	6	Back Board 2	1	34.2" * 13.4" * 0.71"
	7	False Drawer	1	35.6" * 6.3" * 1.5"
	8	Before board	2	35.6" * 4.5" * 0.9"
	9	Fixed Shelf	1	22.6" * 20.2" * 0.71"
	10	Connect Board 3	1	10.8" * 3.2" * 0.71"
B	11	Door 1 (left)	1	24.6" * 12" * 0.82"
	12	Door 2 (Right)	1	24.6" * 12" * 0.82"
C	13	Drawer Front	2	12" * 12.3" * 0.82"
	14	Left Side Board For Drawer	2	15.8" * 7.1" * 0.6"
	15	Right Side Board For Drawer	2	15.8" * 7.1" * 0.6"
	16	Back Board For Drawer	2	8.5" * 7.1" * 0.6"
	17	Front Board For Drawer	2	8.5" * 7.1" * 0.6"
	18	Bottom Board For Drawer	2	15" * 8.9" * 0.2"
D	19	Drawer Glides	4	15.7" * 1.7" * 0.5"
	20	Hinges1 (door)	2	3.9" * 2.4" * 1.54"
	21	Hinges2 (door)	2	3.9" * 2.4" * 1.54"
	22	Three-in-one Connector	70	0.57" * 0.46"
	23	Screws for M4 * 14	52	M4 * 14
	24	Screws for M4 * 25	8	M4 * 25
	25	Handle Screws	2	M4 * 25
	26	Handle Screws	2	M4 * 30
E	27	Wood Plug	28	0.31" * 1.18"
	28	Knob	4	1.15" * 1"

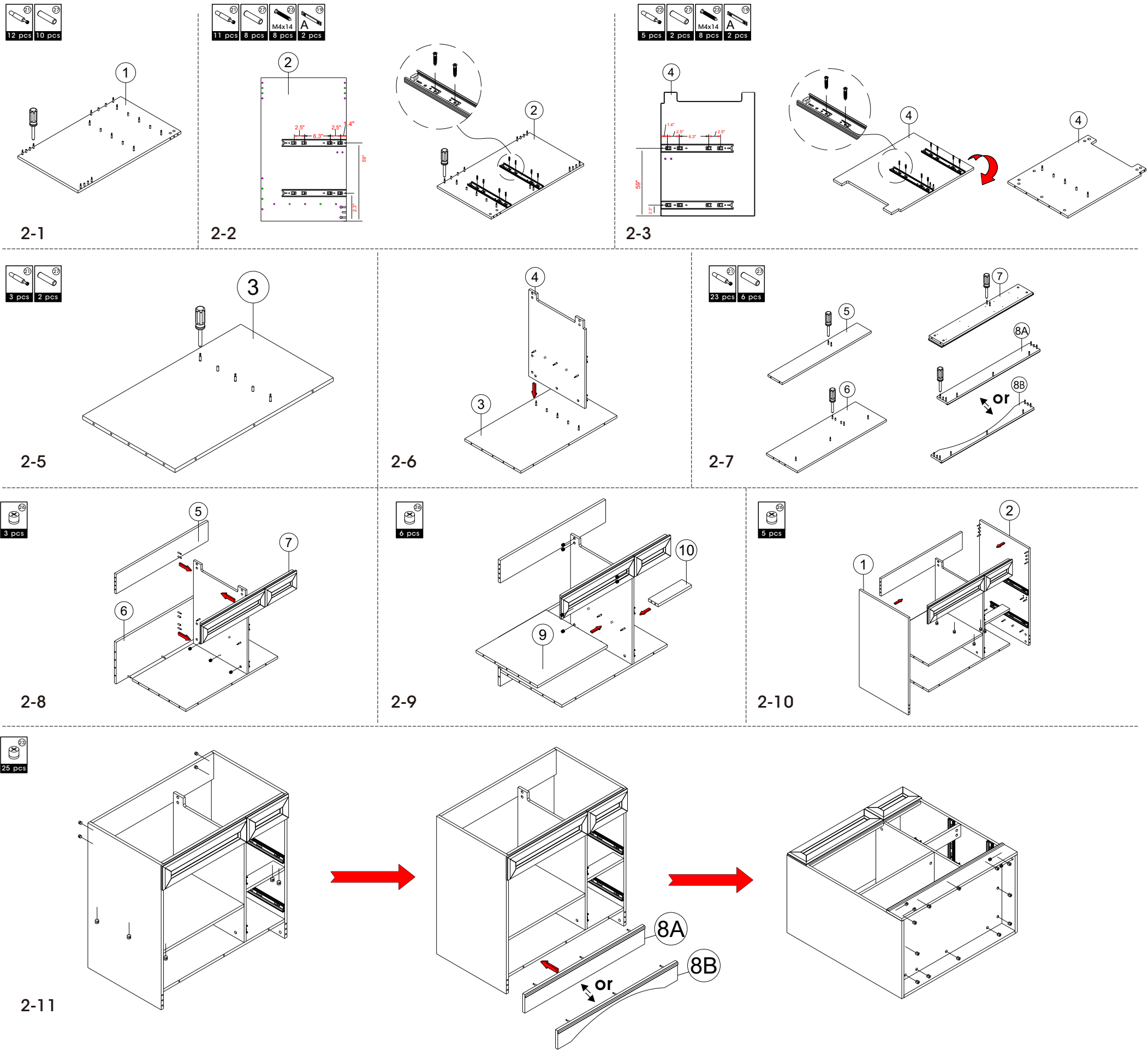
INSTALLATION STEPS

STEP 1 | Drawer

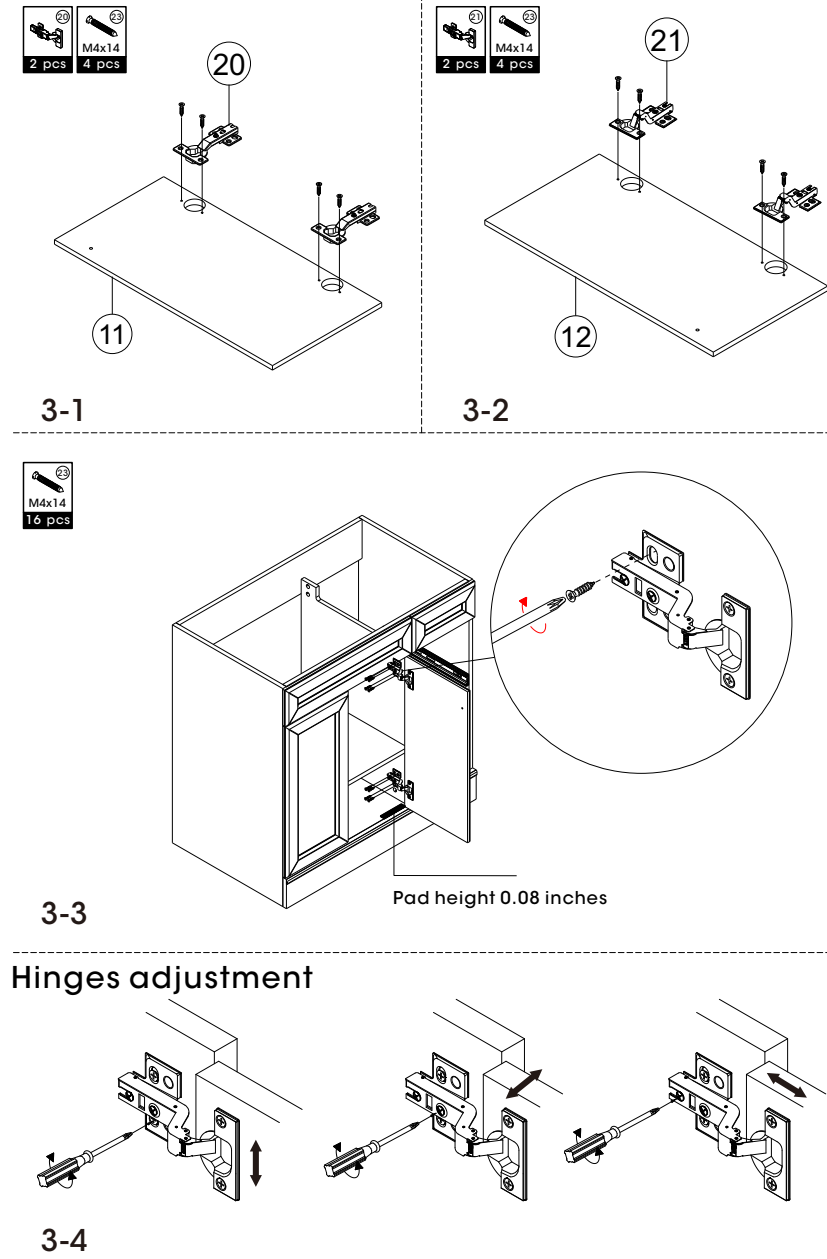


INSTALLATION STEPS

STEP 2 Cabinet frame



STEP 3 Door



STEP 4 Drawer and Finish

