

#### STEP 8

Check sink faucet holes and countertop faucet holes line up, then secure countertop to the cabinet.

#### STEP 9

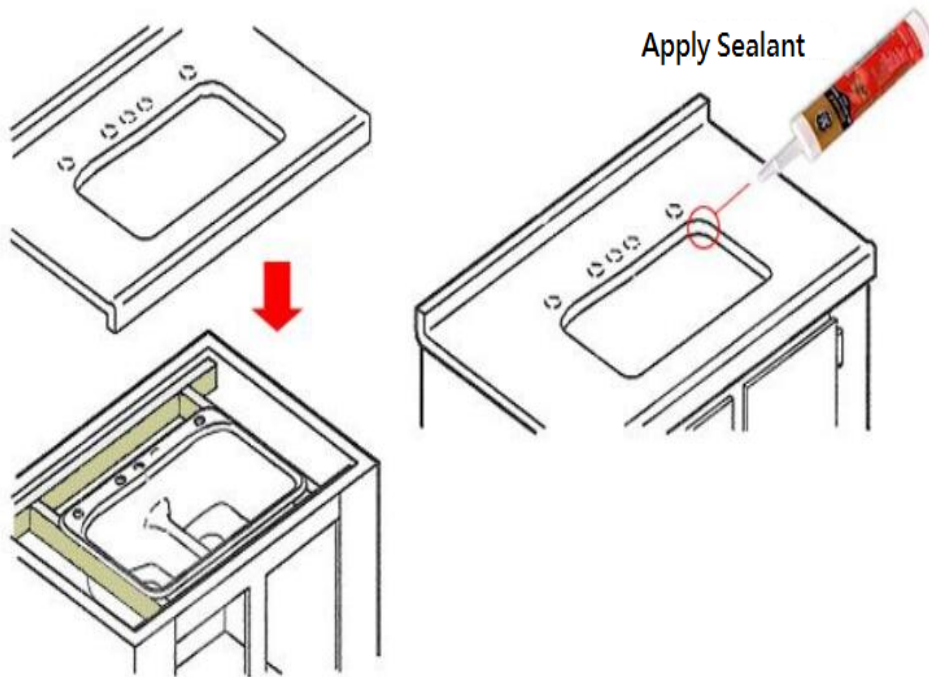
Slowly put sink on the wood frame or rail, make sure countertop over the sink and onto the cabinet frame.

#### STEP 10

Use sealant if required. When sealant is cured, attach faucet, strainer or other plumbing fittings to the sink.

#### STEP 11

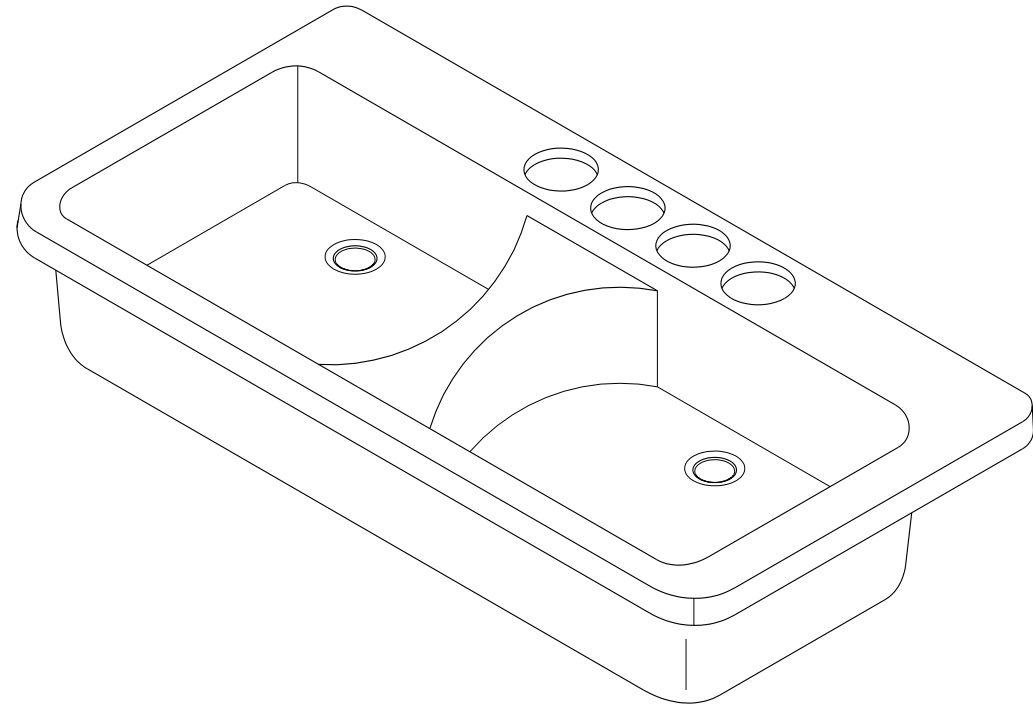
Run water into the sink to check if any leaks.



#### STEP 12

For round-shape sinks, rail may not be used. Just use wood frame to support sink.

**GOURMETIER™**  
**KINGSTON CREATION**



[www.kingstonbrass.com](http://www.kingstonbrass.com)

TOLL-FREE CUSTOMER SERVICE: 1-877-2-KBRASS

TECHNICAL SUPPORT E-mail: [service@kingstonbrass.com](mailto:service@kingstonbrass.com)

12775 Reservoir Street, Chino, CA91710

# GOURMETIER<sup>TM</sup>

## KINGSTON CREATION

### KINGSTON BRASS INSTALLATION INSTRUCTIONS UNDERMOUNT KITCHEN SINK

These instructions are for installing Kingston Brass Cast Iron Kitchen sinks.

#### Note:

- It is recommended that all countertops be cut and installed by an approved or certified professional.
- Thoroughly inspect the product and all materials for any damage prior to installation. Do not install a damaged or defective unit.
- Responsibility with observing all local plumbing and building codes lies with the consumer.
- Warranty will be voided if the product has not been installed and maintained in accordance with all written instructions accompanying the product.

#### STEP 1

Thread the bolts into the nuts.

#### STEP 2

Position the assembled nuts and bolts at one end of steel rail and slide nuts into slots in the rails.

#### STEP 3

Location of bolts are where the sink will be.

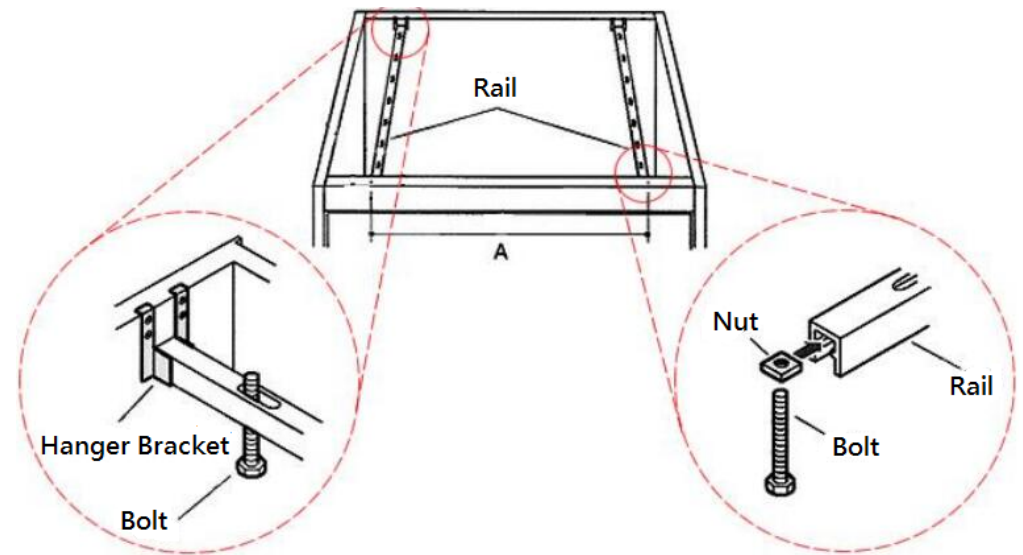
#### STEP 4

Put hanger brackets on both ends of rail after all assembled nuts and bolts are in rail.

#### STEP 5

Place rail assemblies into cabinet as outside edges of A. A is distance of overall width of sink.

Mark the screw holes on the hanger brackets on the cabinet.



#### STEP 6

Construct a wood frame inside of cabinet, make sure each side is between outside edges of A. Ensure the wood frame can support four sides of sink rim. Check the sink rim top will be flush with top of cabinet. Use shims if required.

#### STEP 7

Fasten wood frame in the right position of cabinet.

