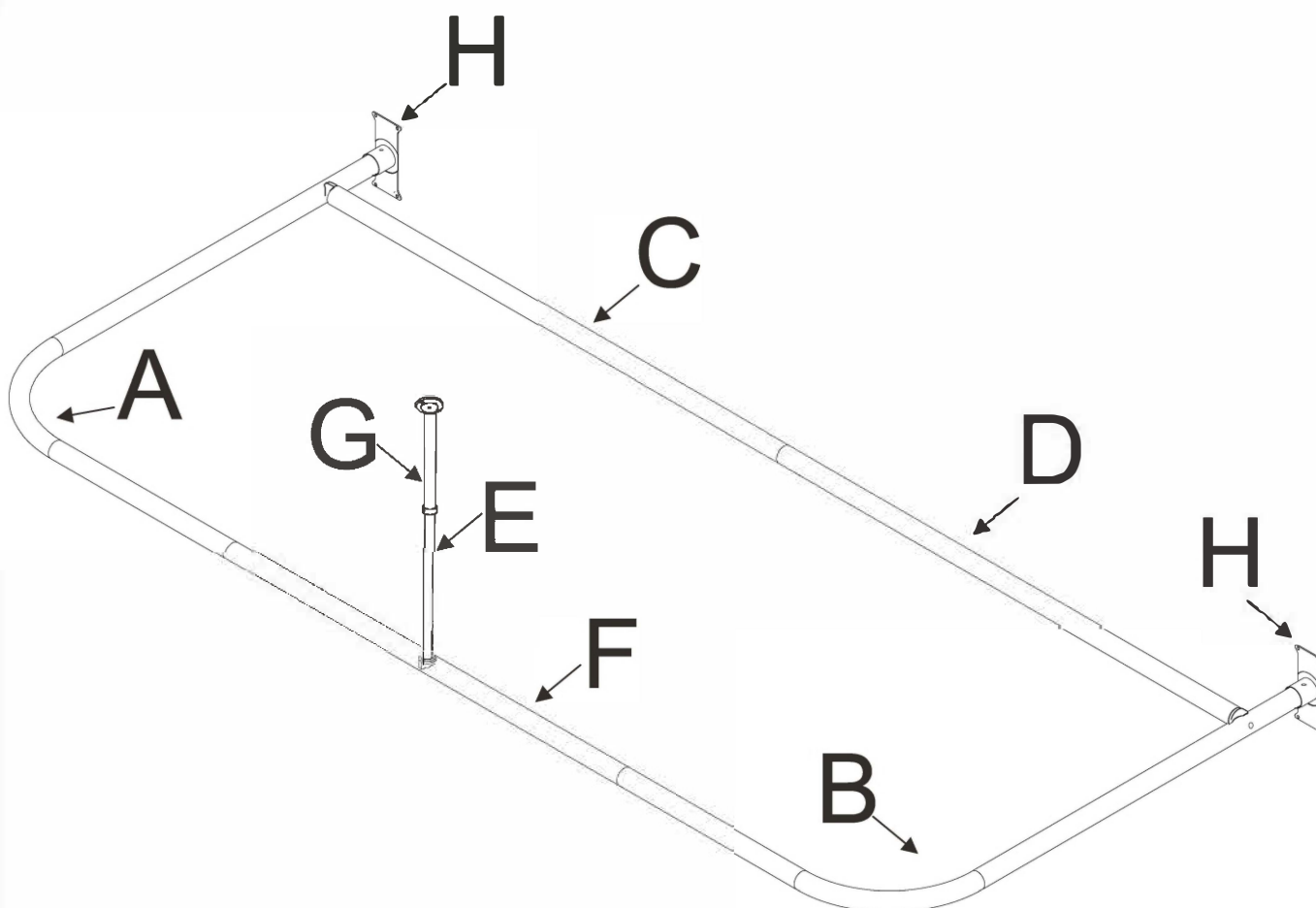
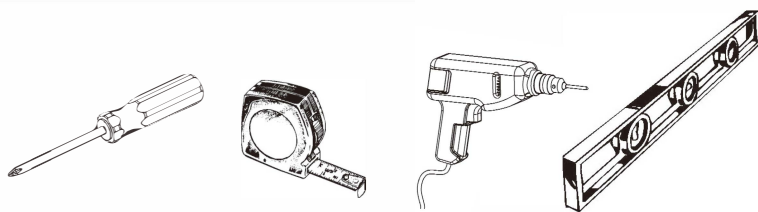


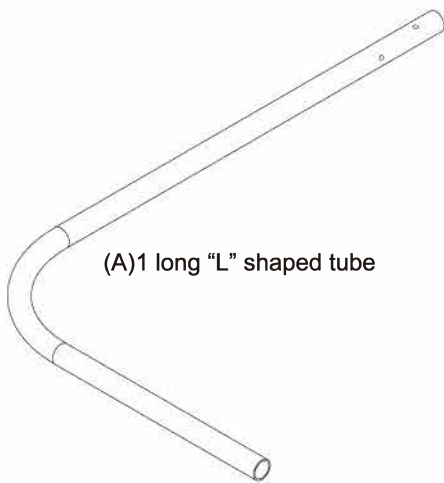
Tools Needed:



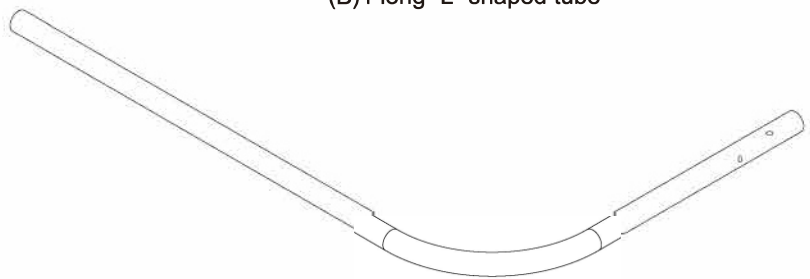
Thank you for purchasing Utopia Alley Products. Please contact us if you have difficulty with assembly or need replacement parts. Utopia Alley customer service is here to assist you.

Email: CustomerService@utopiaalley.com

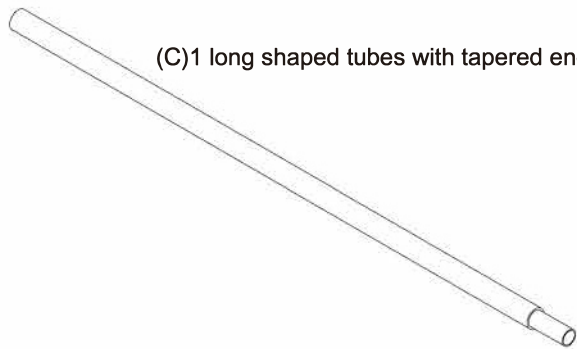
Please attach your name and Order ID so that we can assist you better .



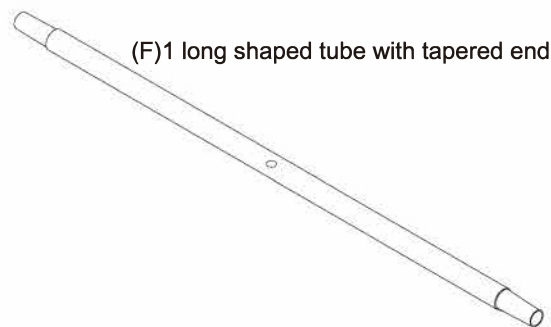
(A)1 long "L" shaped tube



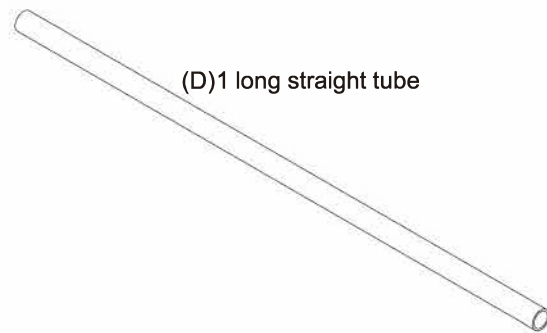
(B)1 long "L" shaped tube



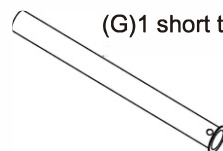
(C)1 long shaped tubes with tapered end



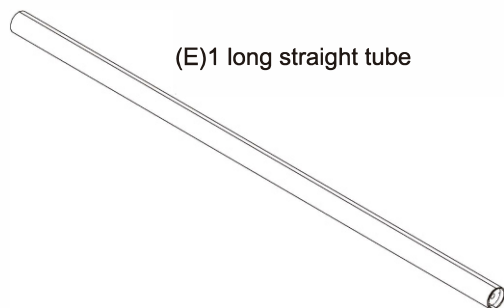
(F)1 long shaped tube with tapered end



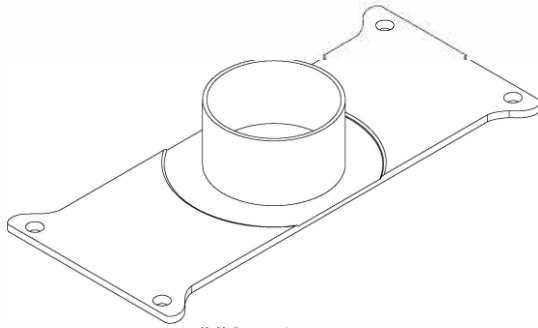
(D)1 long straight tube



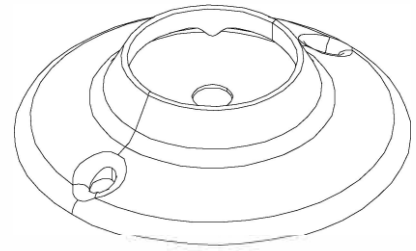
(G)1 short tube with hole



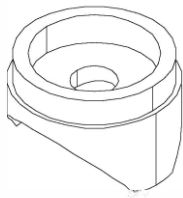
(E)1 long straight tube



(H) 2 end caps

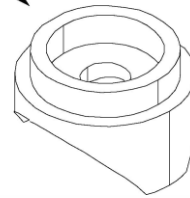


(I) 1 closed metal flange

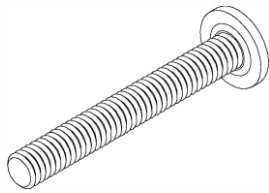


(J) 2 in. nylon insert

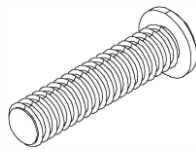
NOTE: For parts M & N, 1 in. and 7/8 in. refers to the diameter of the circular end that will fit inside tubes (D,G)



(K) 1 7/8 in. nylon insert



(M) 3 large screws



(N) 1 medium screws



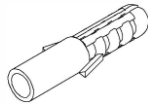
(O) 3 small screws



(P) 1 vertical support collar



(Q) 10 mounting screws



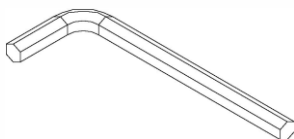
(R) 10 wall anchors



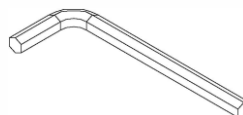
(S) 4 set screws



(T) 1 set screw

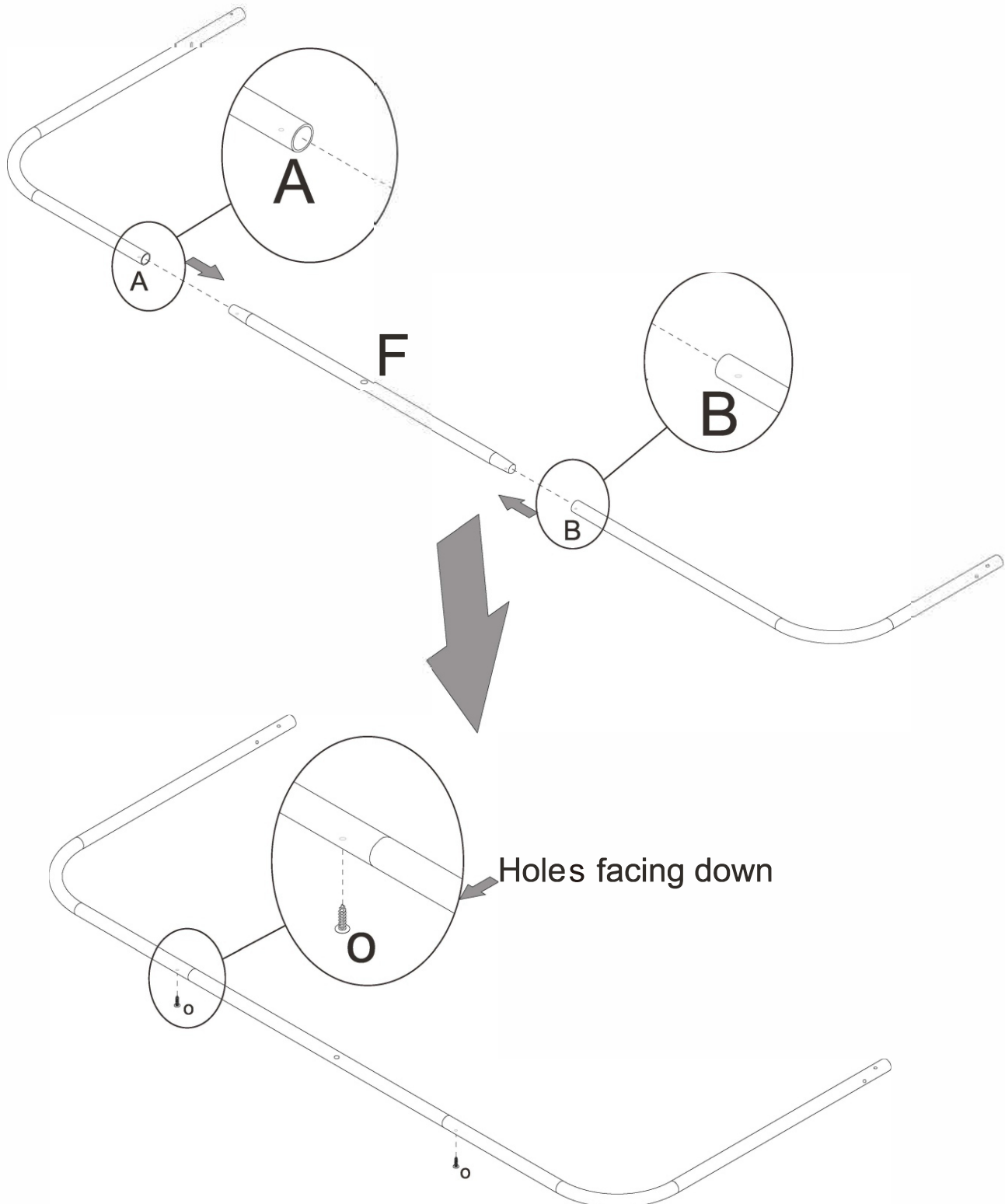


(U) 1 allen large wrench for use with set screw(T)

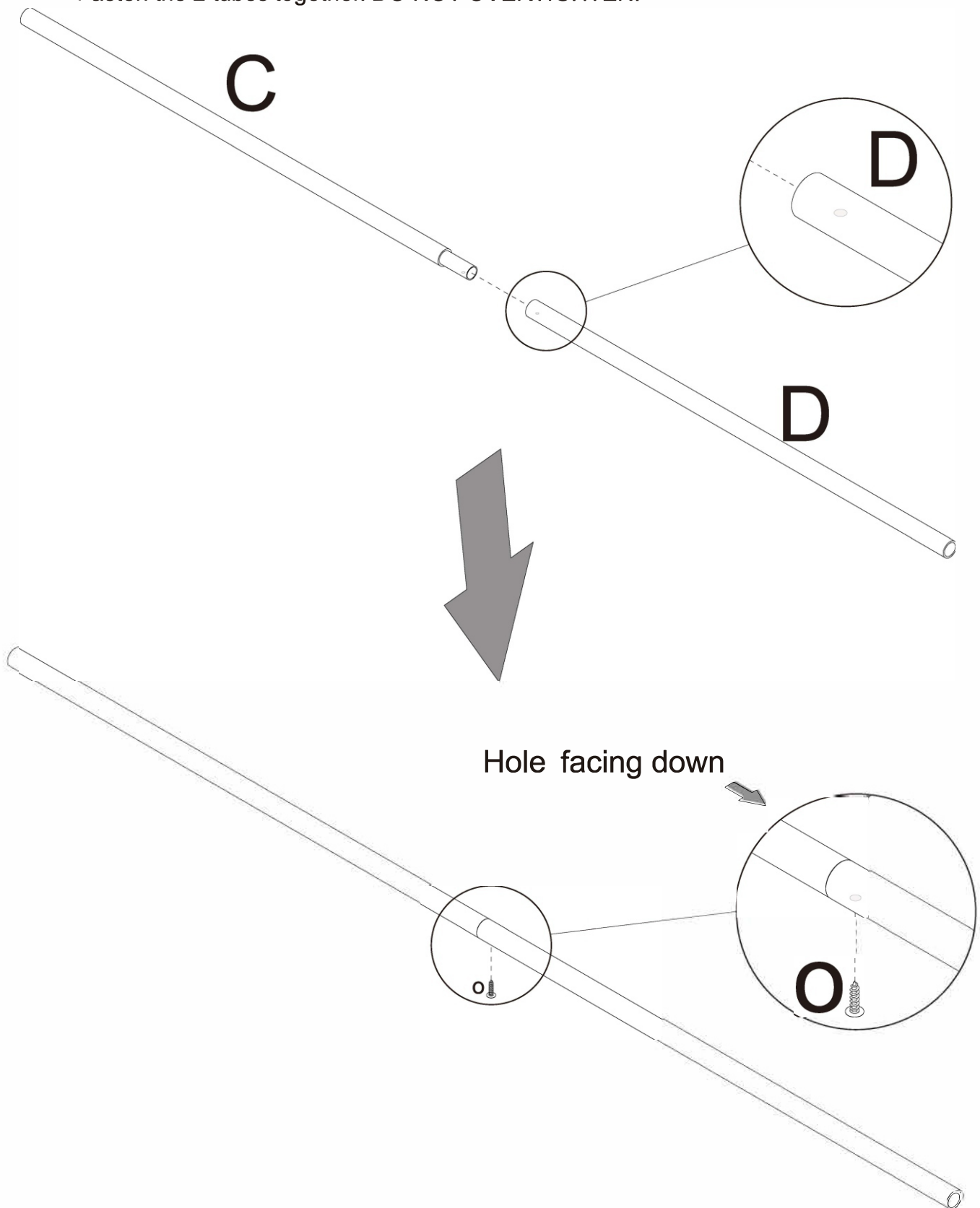


(V) 1 allen small wrench for use with set screw(S)

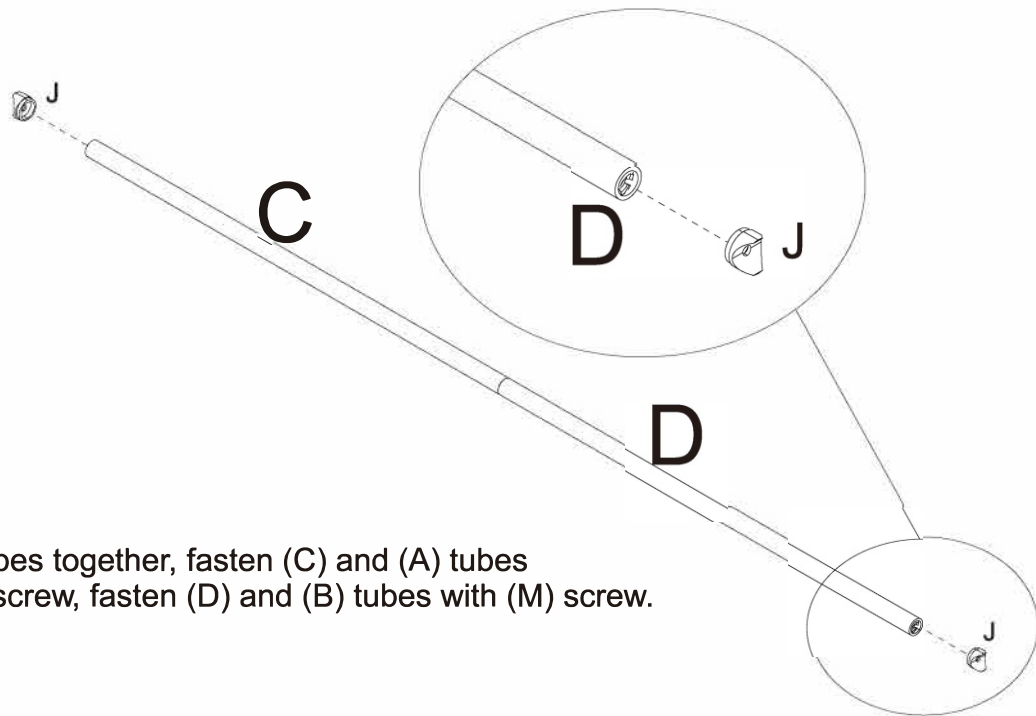
- 1** Insert the (F) tapered ends of the tubes into the (A) and (B) non-tapered ends as shown and line up the holes. Fasten the 3 tubes together. **DO NOT OVERTIGHTEN!**



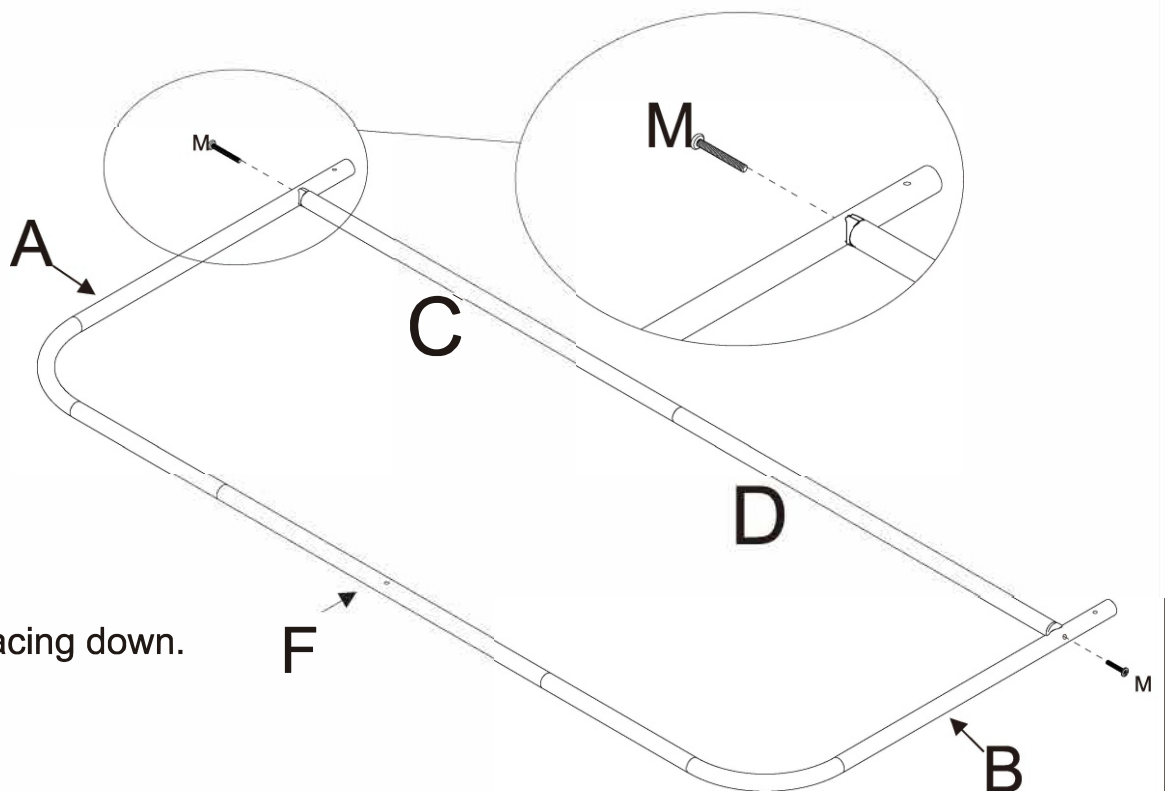
- 2** Insert the (C) tapered end of the tube into the (D) non-tapered ends as shown and line up the holes. Fasten the 2 tubes together. **DO NOT OVERTIGHTEN!**



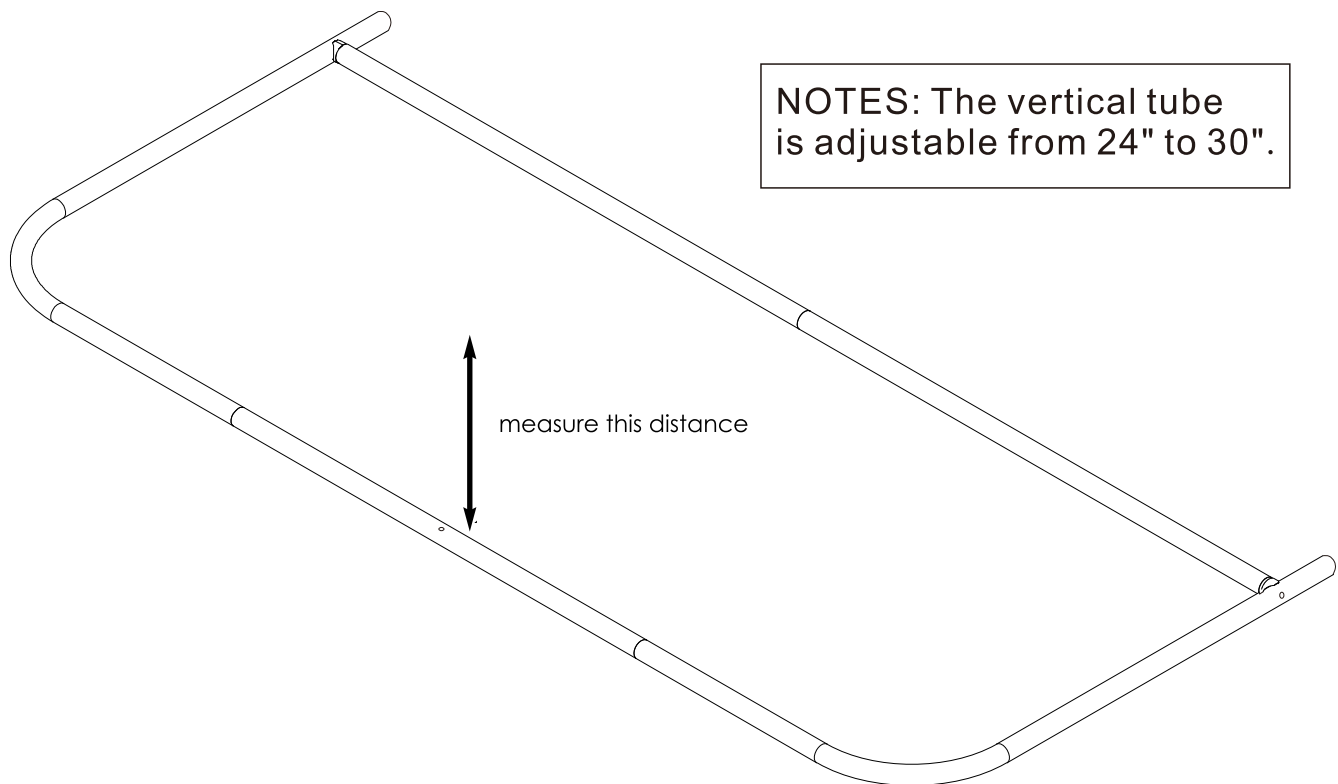
- 3** Insert two 1 in. nylon insert (J) into (C) and (D) tube ends.



- 4** Put all tubes together, fasten (C) and (A) tubes with (M) screw, fasten (D) and (B) tubes with (M) screw.

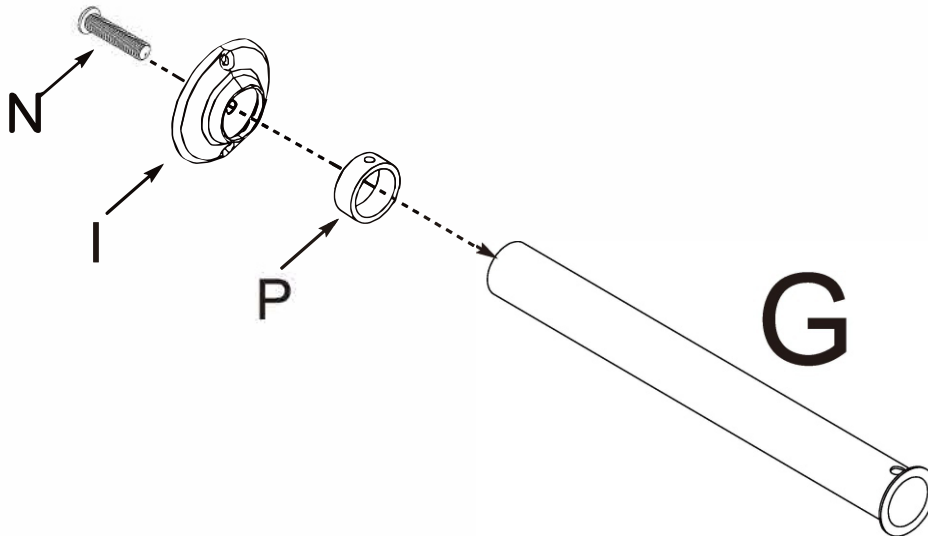


5 Keeping assembly level, measure from the top of assembly to ceiling.

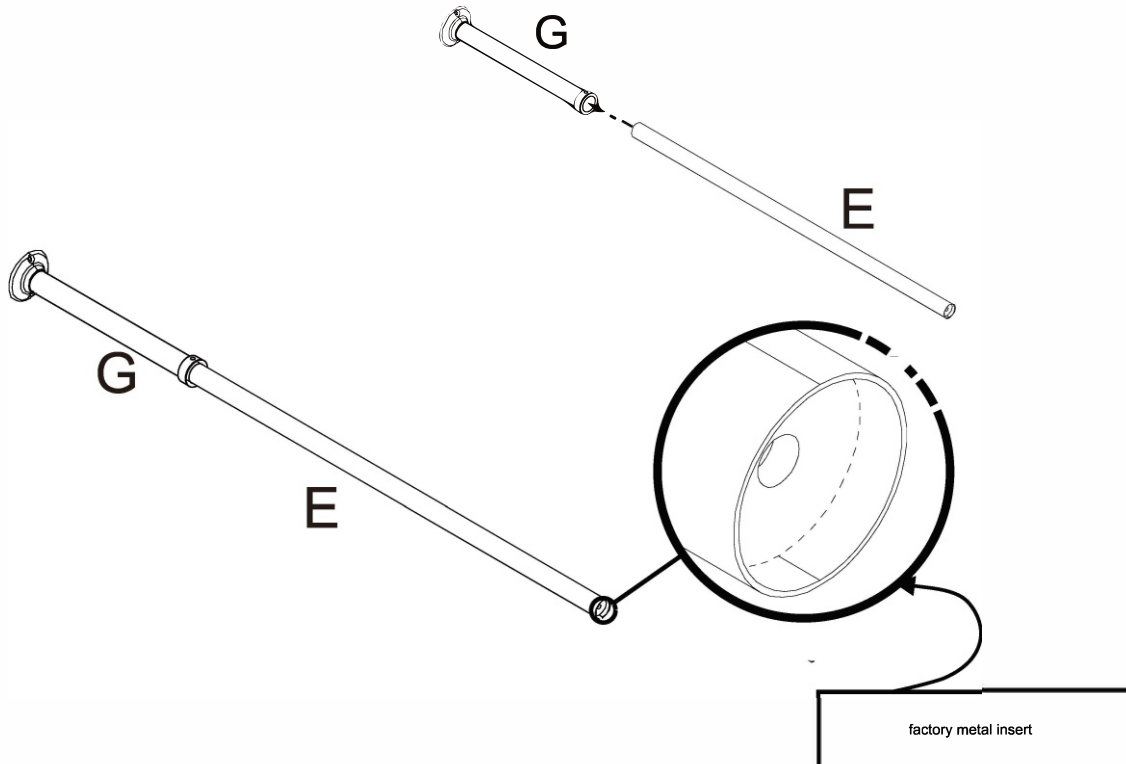


NOTES: The vertical tube is adjustable from 24" to 30".

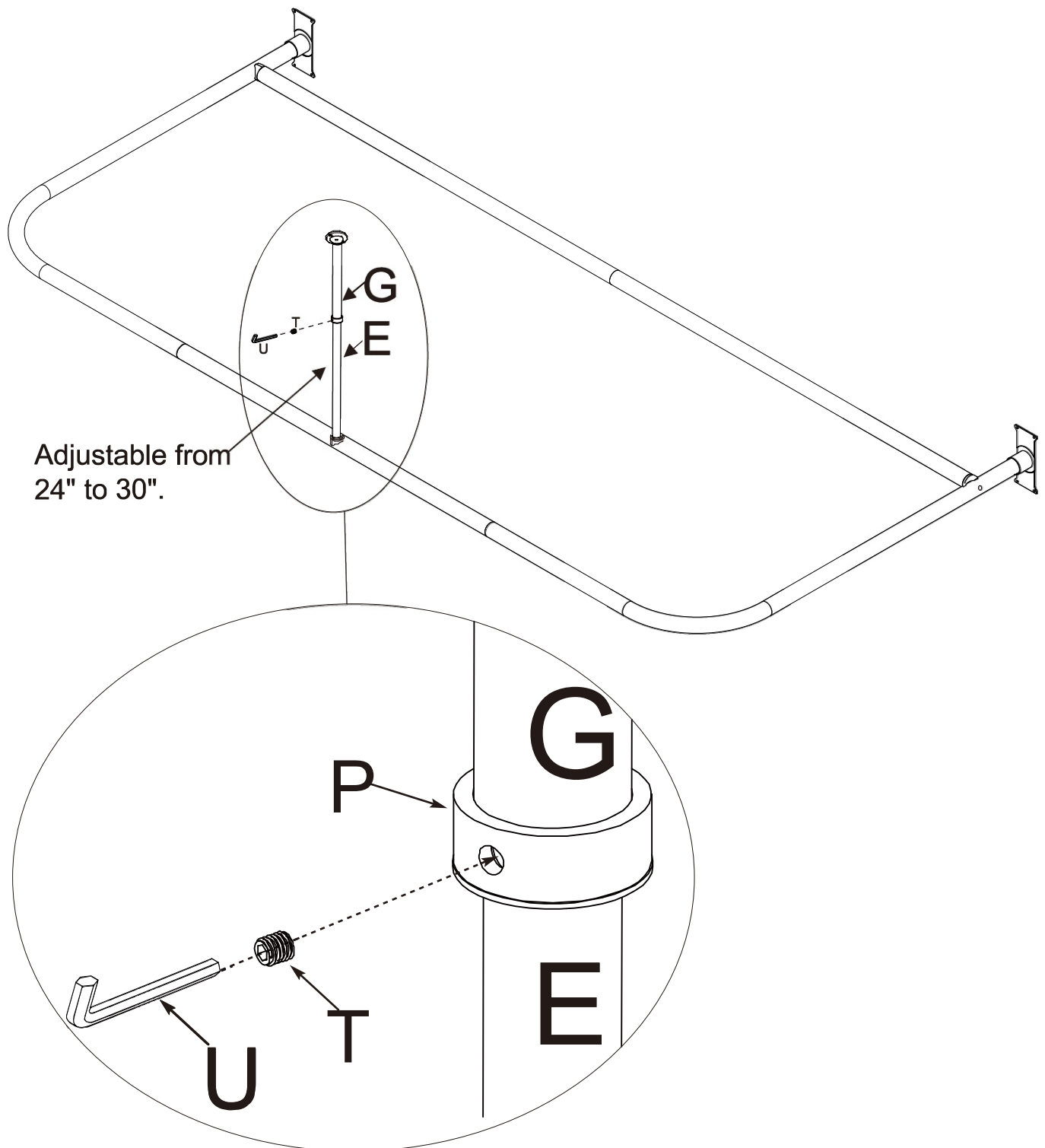
- 6** Put part (P) on the outside of the tube (G), then screw (N) goes thru part (I) and installed in tube (G).



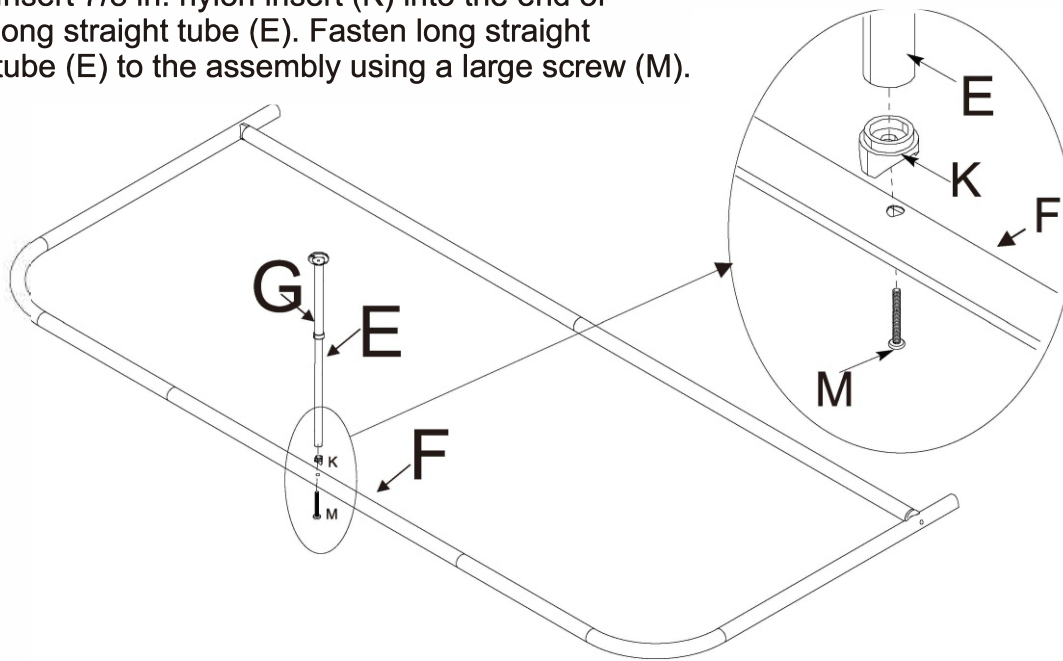
- 7** Slide the long straight tube (E) into short tube (G), as shown.



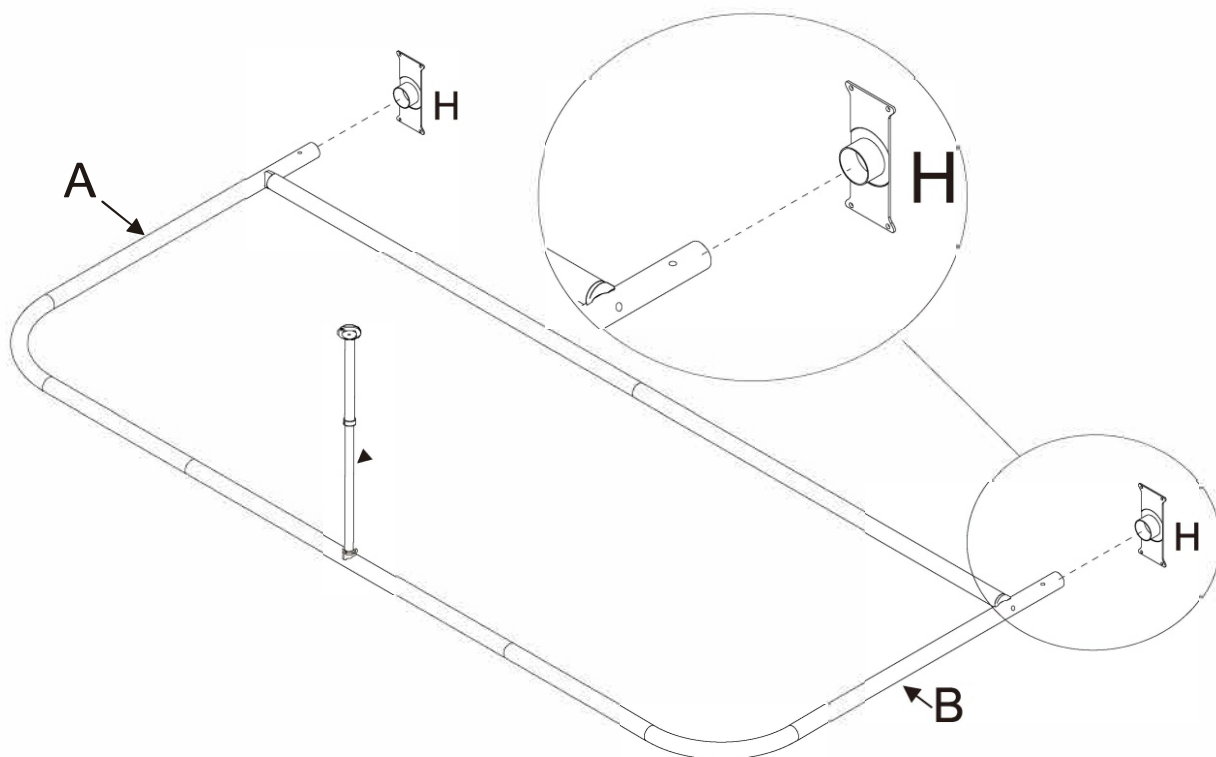
- 8** Fasten the set screw (T) into the vertical support collar (P) and tighten the short tube with hole (G) to the long straight tube (E) together using allen wrench (U), as shown.



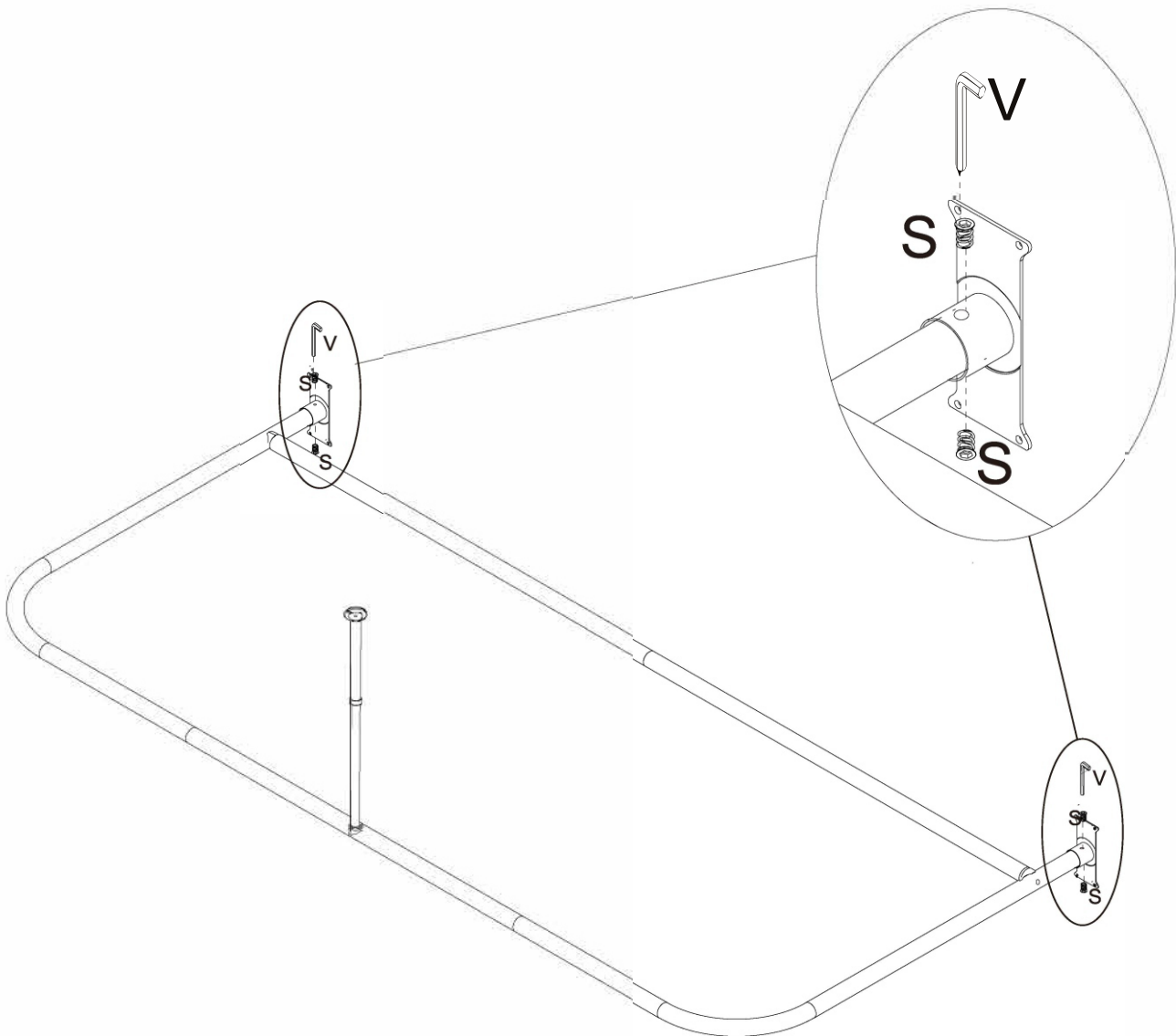
- 9** Insert 7/8 in. nylon insert (K) into the end of long straight tube (E). Fasten long straight tube (E) to the assembly using a large screw (M).



- 10** Slide end caps (H) onto the ends of the tube assembly as shown.



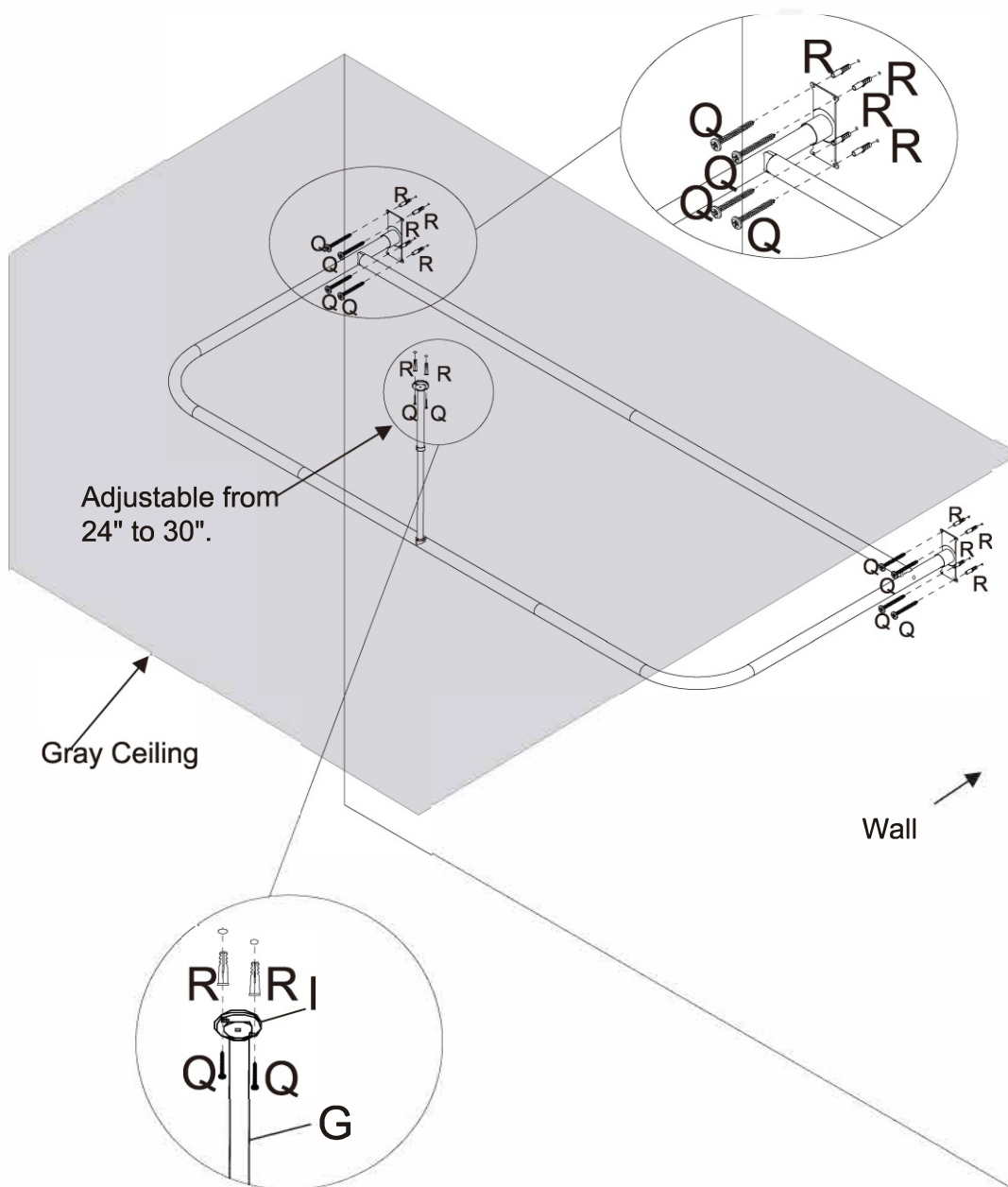
11 Fasten screw (S) with using allen wrench (V), as shown.



12

Using mounting screws (Q), attach closed metal flange (H) to the wall, as shown.

NOTE: If you screw directly into studs, anchors (R) are not necessary



⚠ WARNING

Manufacturer and seller expressly disclaim any and all liability for personal injury, property damage or loss, whether direct, indirect, or incidental, resulting from the incorrect attachment, improper use, inadequate maintenance, or neglect of this product.