

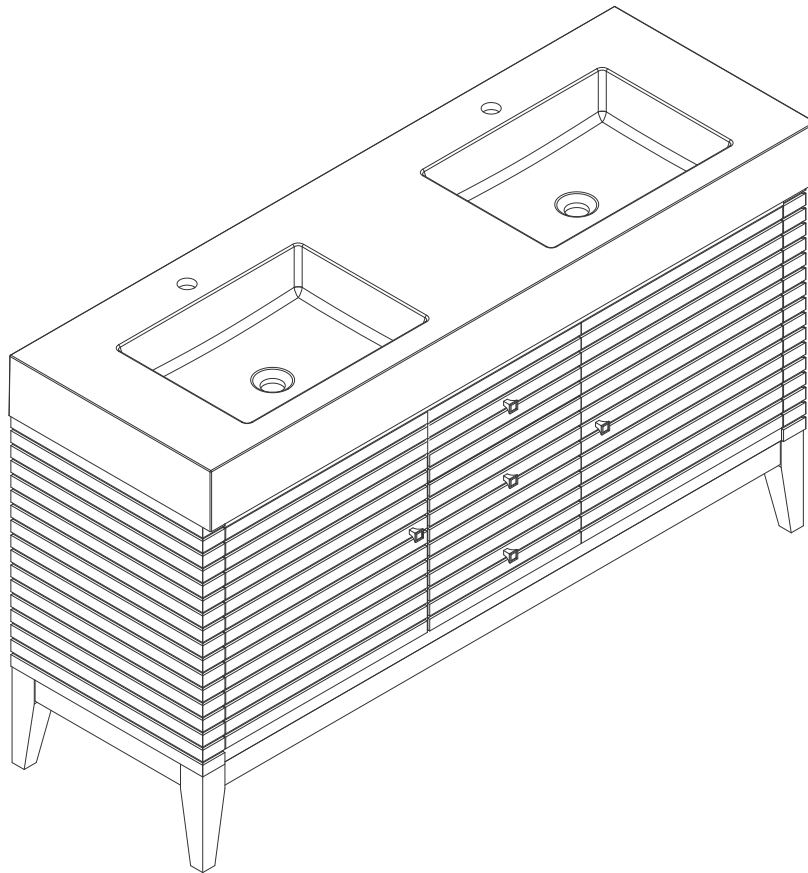
# 59"D LINEAR VANITY

210-V59D-GW

210-V59D-WLT

210-V59D-WW

**JAMES MARTIN**  
VANITIES



## Features and Materials

Solids: GW-Poplar; WLT-Walnut; WW-Rubber Wood

Panels: Plywood

Veneers: WLT/WW-Walnut

Installation Type: Floor Standing

Number of Basins: Two, Integrated Sinktop

Sinktop Included: NO, Sold Separately (CS-S368)

Basin Overflow: NO

Number of Doors: Two

Number of Drawers: Three

Number of Tip Outs: 0

USB/Power Component: YES (ETL5011080)

Cord Length: 6'6"

Bamboo Storage Tray: NO

Assembly Required: NO

Drawer Box Material and Construction: 12mm Plywood/English Dovetail Joinery

Hardware Material and Finish: Zinc Alloy in Satin Nickel Color

Fits Drain Hole Size: 1 3/4"

Full Extension, Soft Close Glides

European Soft Close Hinges

Aluminum Laminate Drawer Liners

Adjustable Levelers

## Dimension

Width: 58-3/4"

Depth: 19-1/2"

Height: 29-3/8"

Rough-In Height: 21-1/2"

# 59"D LINEAR VANITY

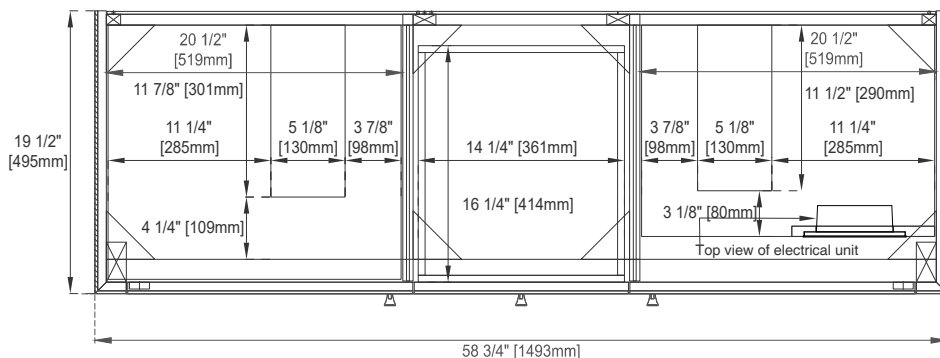
210-V59D-GW

210-V59D-WLT

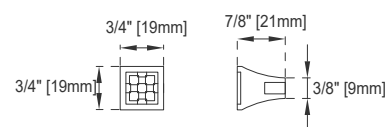
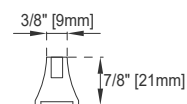
210-V59D-WW

# JAMES MARTIN

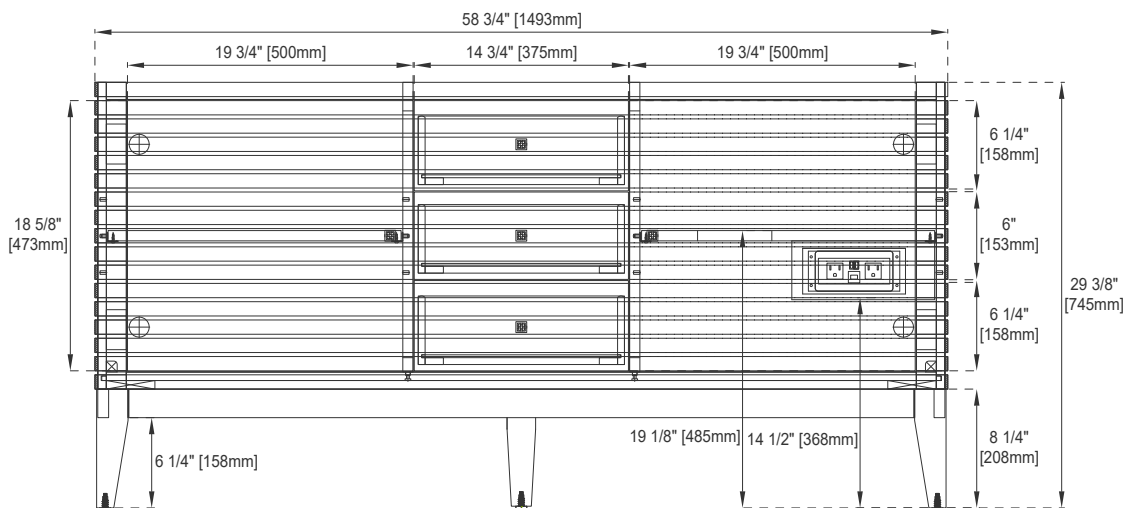
## VANITIES



Top View



Knob



Front View

All dimensions are nominal

Diagrams are of cabinet only-James Martin Optional integrated sinktops are not shown

Visit website for warranty and installation information  
[www.jamesmartinvanities.com](http://www.jamesmartinvanities.com)

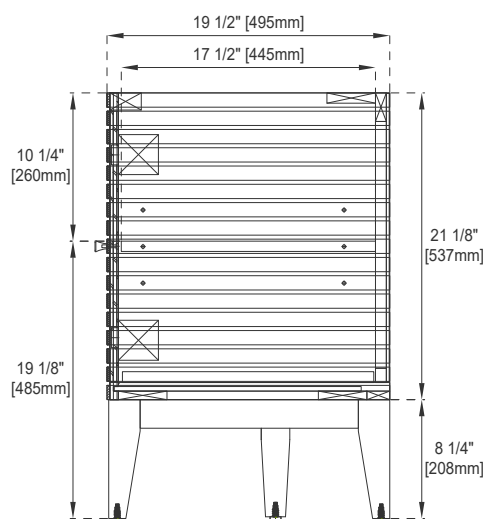
# 59"D LINEAR VANITY

210-V59D-GW

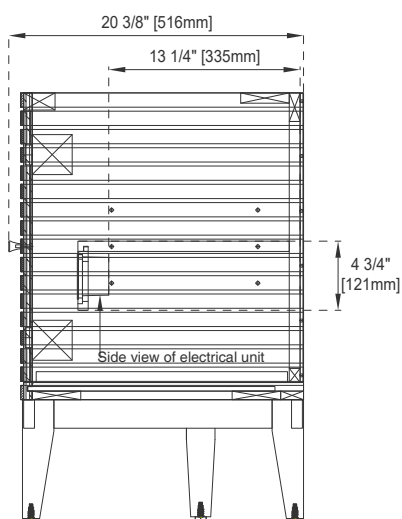
210-V59D-WLT

210-V59D-WW

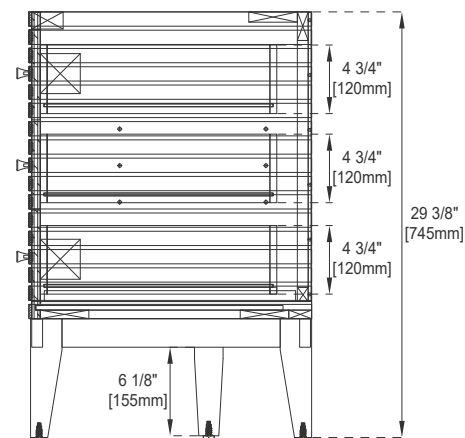
JAMES MARTIN  
VANITIES



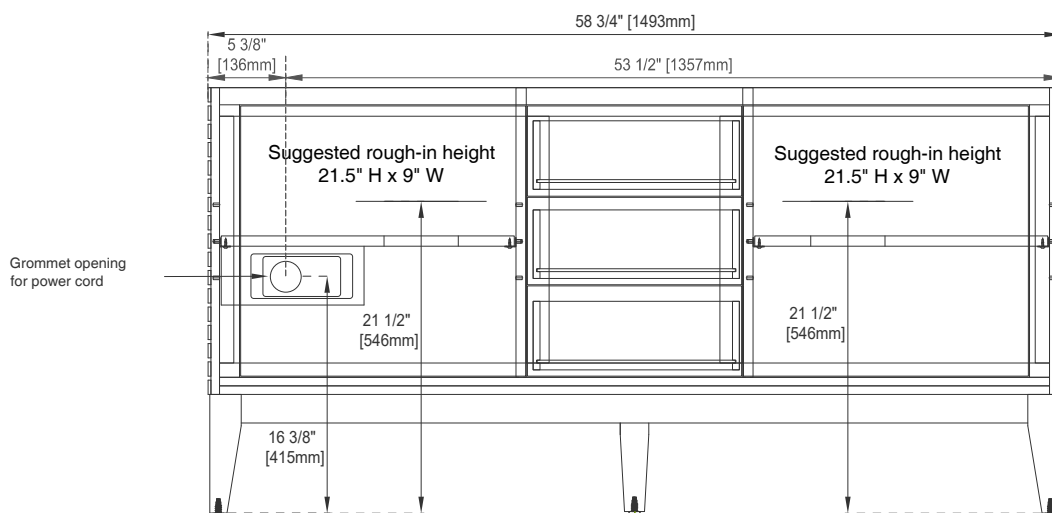
Side View 1



Side View 2



Side View 3



Back View

All dimensions are nominal

Diagrams are of cabinet only-James Martin Optional integrated sinktops are not shown

Visit website for warranty and installation information  
[www.jamesmartinvanities.com](http://www.jamesmartinvanities.com)