

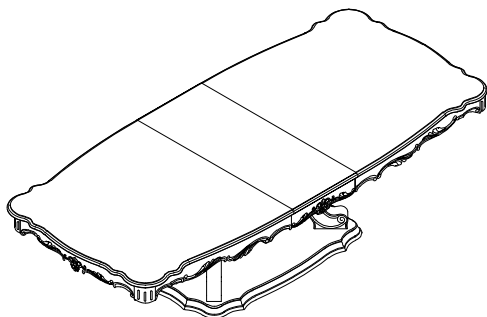
ASSEMBLY INSTRUCTION FOR ACME FURNITURE

Model #DN02281-1/DN02281-2

DESCRIPTION: PEDESTAL TABLE TOP/PEDESTAL TABLE BASE

Thank you for purchasing this quality product. Be sure to check all packing materials carefully for small parts, which may have come loose inside the carton during shipment. Identify and count all parts and compare with the parts list below.

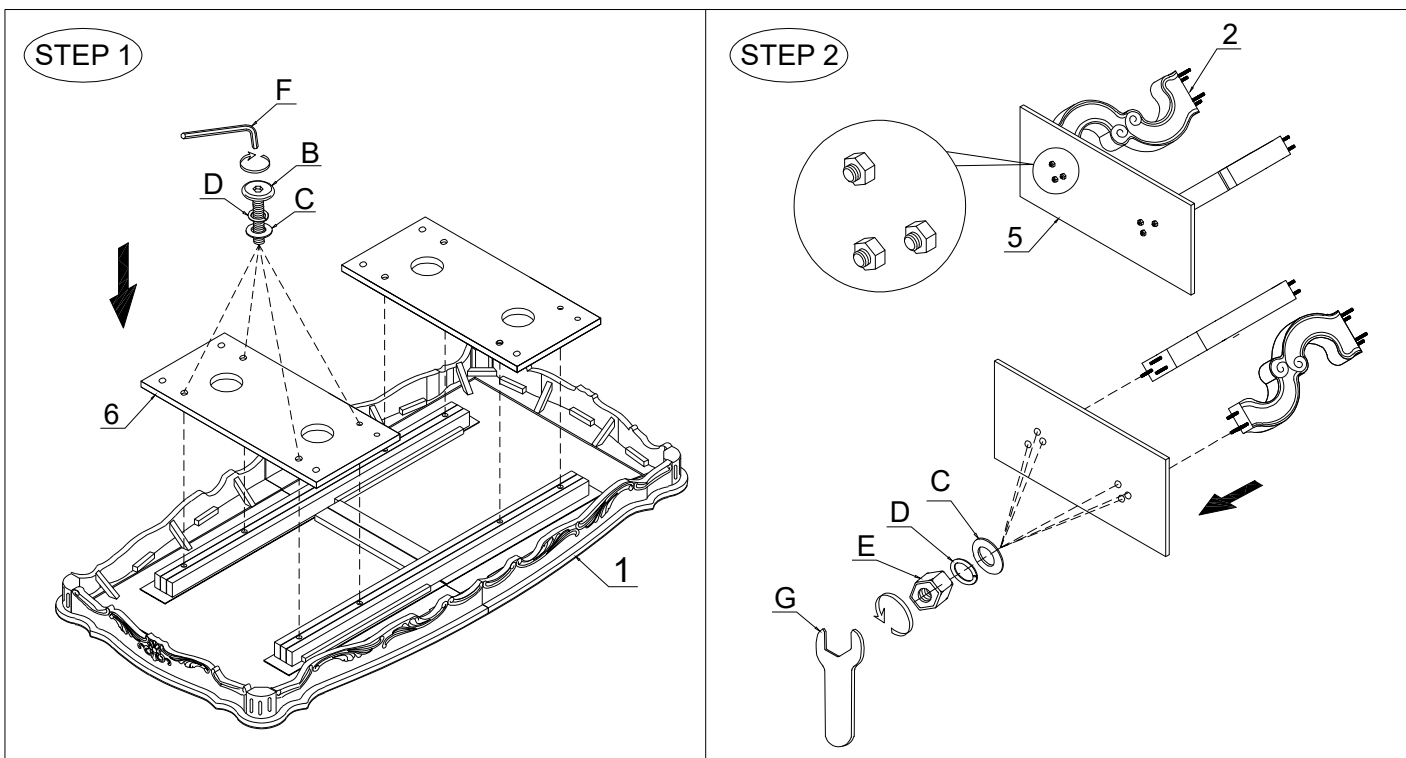
**** Do not fully tighten screws until fully assembled ****



| HARDWARE LIST | | | |
|---------------|---------|----------------------------|-------|
| NO. | Drawing | Description | Q'ty |
| A | | Bolt (Φ5/16"x2") | 8pcs |
| B | | Bolt (Φ5/16"x1-1/2") | 8pcs |
| C | | Flat washer (Ø5/16"x23mm) | 44pcs |
| D | | Spring washer (Ø5/16") | 44pcs |
| E | | Hex Nut (Ø5/16") | 28pcs |
| F | | Allen wrench (108x31xØ5mm) | 1pc |
| G | | Ø5/16" Wrench(12mm) | 1pc |

PARTS LIST:

| | | | | | |
|-----------------|-----------------|----------|------------|-------------------------|-------------------------|
| | | | | | |
| TABLE TOP : 1PC | PEDESTAL : 4PCS | LEAF:1PC | BASE : 1PC | MOUNTING PLATE A : 2PCS | MOUNTING PLATE B : 2PCS |



CLEANING INSTRUCTION

Clean the surface of the Pedestal Table Top/Pedestal Table Base with furniture polish and a soft cloth.

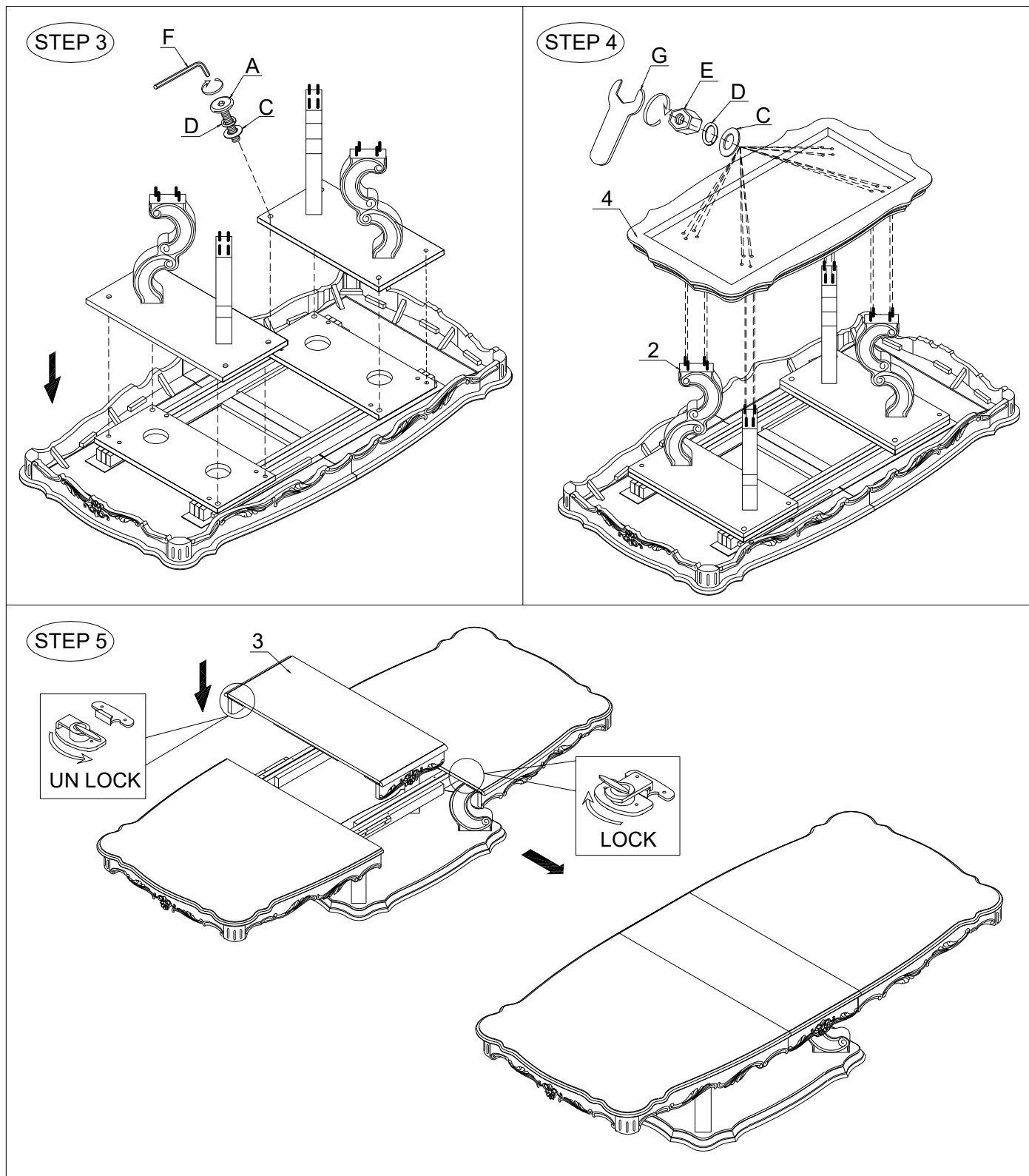
Attention

*** Some number parts listed on the instruction sheet may not be in parts bag as they may be assembled. Carefully check parts and packing materials prior to ordering replacements.***

ASSEMBLY INSTRUCTION FOR ACME FURNITURE

Model #DN02281-1/DN02281-2

DESCRIPTION: PEDESTAL TABLE TOP/PEDESTAL TABLE BASE



CLEANING INSTRUCTION

Clean the surface of the Pedestal Table Top/Pedestal Table Base with furniture polish and a soft cloth.

Attention

*** Some number parts listed on the instruction sheet may not be in parts bag as they may be assembled. Carefully check parts and packing materials prior to ordering replacements.***