



LLOYD FLANDERS®

WOVEN FOR LIFE

A rectangular inset image with a white border, showing a close-up of a woven basket. A white label is attached to the basket, and the text 'Product Guide for Care & Maintenance' is printed on it. The background of the inset shows the intricate weaving of the basket.

Product Guide for Care & Maintenance



Product Guide for Care & Maintenance



AT LLOYD FLANDERS®, GREAT DESIGN, CRAFTSMANSHIP
AND LIFELONG DURABILITY ARE ALL INTERTWINED.



Crafted for generations.

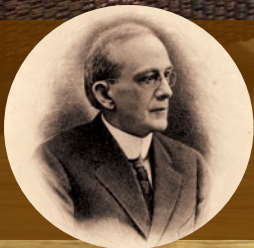
When the Flanders family purchased the Lloyd Manufacturing Company over a quarter of a century ago, we made a commitment to honor the history and heritage of the company, and to maintain the high quality standards our customers have come to expect.

We use state-of-the-art manufacturing processes and equipment combined with over 100 years of tradition and furniture knowledge to produce classic American wicker furniture. Combining the best of the old with the improvements of the new yields heirloom-quality furniture to be enjoyed for generations to come.

We are proud to be a family-operated business and we are dedicated to growing and fostering the relationships we've built with our customers. We value your trust in our company and we will always do our best to meet your expectations.

Welcome to the Lloyd Flanders family.


Dudley Flanders, President & CEO



In 1917, Marshall B. Lloyd patented a process of weaving cellulose strands into wicker fabric. Lloyd Flanders® has advanced the original technology producing a continuous strand that will not burr, crack, or peel, resulting in a consistently smooth weave. This innovative manufacturing process allows Lloyd Flanders to produce wicker furniture durable enough for outdoor use. Today, Lloyd Flanders continues to lead the industry in innovative and stylish all-weather wicker.

OXFORD COLLECTION

FEATURES:



DURIUM® POLYESTER COATING

Our Durium polyester coating, a long-lasting, high-performance finish, increases the durability and flexibility of your Lloyd Flanders Lloyd Loom furniture.

CONTINUOUS WEAVE

We use a continuous weave on all of our Lloyd Loom products to avoid burrs and cracking in the Loom material, and to make the furniture more visually appealing by eliminating any visible material ends.

DID YOU KNOW?

You can change the look of your Lloyd Loom furniture to work with the latest fashion and décor trends by simply refinishing it with premium acrylic paint in your choice of colors.

Care & Maintenance *for* Lloyd Flanders®

LLOYD LOOM®



CLEANING

Please ensure that no dirt or other organic materials, such as leaves or pine needles, are allowed to collect under the cushions or between the woven panels. Accumulation of these acidic materials may damage the finish if not removed regularly. Vacuum, or use a soft brush or upholstery tool to remove organic material and surface soil that may accumulate.


Please Note: Pressure washing is not recommended for Lloyd Flanders Lloyd Loom furniture.

PAINT FINISH

Timely care of the paint finish will protect the furniture as well as promote longevity. Should the finish become worn, Lloyd Flanders touch-up paint is available for purchase from your dealer.

FRAME FINISH

A soiled frame can be washed with mild detergent, water, and a sponge or soft brush. If the finish on the frame becomes scratched or chipped, first lightly sand the damaged area, clean and dry, then apply Lloyd Flanders touch-up paint.



Lloyd Flanders offers a unique selection of vinyl all-weather wicker furnishings. Only 100% virgin vinyl is used in the handcrafted wicker manufactured exclusively for Lloyd Flanders, and UV inhibitors are added to prevent excessive fading. With our vinyl collections available in a variety of distinctive colors, textures, and styles, Lloyd Flanders brings you home furnishings suited for all of today's outdoor living spaces.

GRAND TRAVERSE COLLECTION

FEATURES:



100% VIRGIN VINYL

Lloyd Flanders vinyl furniture is made with 100% virgin vinyl and has no added “fillers.” This assures that our vinyl will remain soft and pliable through many years of use and will hold its shape. We also include UV inhibitors to help prevent excessive fading.

ALUMINUM FRAMES

Our welded all-aluminum frames are corrosion-resistant and extremely durable. These frames require minimal maintenance and should retain their finish even after years of use.

DID YOU KNOW?

We use over 2.5 miles of 100% virgin vinyl strand in our Lloyd Flanders Grand Traverse sofa.

Care & Maintenance *for* Lloyd Flanders®

VINYL



CLEANING

Please ensure that no dirt or other organic materials, such as leaves or pine needles, are allowed to collect under the cushions or between the woven panels. Accumulation of these acidic materials may damage the finish if not removed regularly. Vacuum, or use a soft brush or upholstery tool to remove organic material and surface soil that may accumulate. Using a sponge, wash with mild detergent and warm water to remove soil. Rinse and allow the furniture to dry thoroughly before use. **We do not warranty freeze damage.**

Please Note: Pressure washing is not recommended for Lloyd Flanders Vinyl furniture.

STORAGE

Never store your Lloyd Flanders Furniture upside down. Water may collect inside the frames and lead to freeze damage. Please use a breathable cover for your furniture in extreme climates.



Our premium teak wood is ideal for outdoor furniture because of its high oil content, inherent strength and tight grain. Teak is naturally resistant to decay and doesn't get brittle with age, adding to its capacity to withstand climate and environmental changes.

Care & Maintenance *for* Lloyd Flanders®



FEATURES:



SUSTAINABLE RESOURCES

Lloyd Flanders uses only sustainably grown and harvested FSC-certified Brazilian teak wood in our outdoor teak furniture.

DID YOU KNOW?

If left exposed to the elements, teak wood will age and mature to a silvery patina.

TEAK

CLEANING:

Teak furniture is easily maintained and only requires periodic cleaning to ensure years of service. Always wash with fresh water. Scrub wet furniture using a soft bristle brush and a mix of mild detergent and warm water. When finished, rinse with clean water to remove detergent. Store-brought teak cleaners should be used as instructed on the label.



TEAK TABLE WITH
REFLECTIONS COLLECTION



ELEMENTS COLLECTION

Care & Maintenance *for* Lloyd Flanders®

STAINLESS STEEL

CLEANING STAINLESS STEEL:

Stainless Steel surfaces require routine cleaning to maintain a desirable appearance and preserve corrosion resistance. Clean with warm water and a soft cloth or sponge. For more stubborn stains, Lloyd Flanders recommends using a commercial stainless steel cleaner. Regular cleaning removes contaminants from the micro-layer of chromium oxide protecting the surface of the steel.

Avoid abrasive cleaning tools and substances such as powder-based cleaners, as they can damage some finishes permanently.






Care & Maintenance *for* Lloyd Flanders®

GRANITE & TRAVERTINE

CLEANING GRANITE:



Granite Table Tops are durable and low maintenance, and will last a lifetime with simple, periodic cleaning. Use an untreated microfiber, soft cloth, or sponge with a mild liquid detergent and warm water to wipe down the surface after each use. **Do not use harsh or abrasive cleaners as they can scratch, pit, and etch the sealed surface.** Lloyd Flanders recommends resealing your granite tabletop once a year with a commercial granite sealant.

CLEANING TRAVERTINE:

Travertine Table Tops are sealed and require only regular wiping with water or occasionally with mild soapy water. **Do not use harsh or abrasive cleaners, or high-pressure washers.** If a stain occurs, remove with a fine (0) steel wool or finer grit sand paper, then apply a stone sealer for additional protection.

ONE-YEAR WARRANTY

All Lloyd Flanders stone top tables come with a limited one-year warranty.



REFLECTIONS COLLECTION

Care & Maintenance *for* Lloyd Flanders®

CUSHIONS & PILLOWS

Lloyd Flanders cushions and pillows are made to stand up to the elements, so you don't need to remove the covers for cleaning. You can clean the cushion as a complete unit, using the methods described on the next page.

For drying, stand the cushions on their ends with the zipper side down (zipper open) and allow time for the cushions to fully air-dry.



FEATURES:



PREMIUM CLOUD CUSHIONING

Constructed from multiple layers of 100% polyester fiber, the cushions are hydrophobic (drains and dries more easily), hypoallergenic, antimicrobial, and mildew-resistant. Premium Cloud Cushioning creates just the right balance between comfort and support.



SOLUTION-DYED ACRYLIC & POLYESTER FABRICS

CLEANING:

Cushions upholstered in Sunbrella® or other solution-dyed acrylic fabrics may be cleaned with one cup of chlorine bleach diluted in one gallon of water with a small amount of mild detergent. Test in a small inconspicuous area. Saturate a cloth or soft brush with the solution. Scrub the entire cushion and rinse well with clean water and let air dry. **Do not put cushion covers in dryer or send out to dry cleaners. This will void the warranty.**

PRINTED POLYESTER FABRICS

CLEANING:

Printed polyester fabric may be scrubbed with a solution of mild detergent and warm water. **Do not use bleach.** Rinse and air dry. **Do not put cushion covers in dryer or send out to dry cleaners. This will void the warranty.**

MILDEW ON SOLUTION-DYED ACRYLIC & POLYESTER / PRINTED POLYESTER FABRICS:

Mix one gallon of distilled water, one cup of chlorine bleach and a squirt of dish detergent*. **Do not use bleach on printed fabrics. Printed fabrics may be scrubbed with a solution of mild detergent and warm water.** Test in a small inconspicuous area. Saturate a cloth or soft brush with the solution. Begin scrubbing the cushions, one small area at a time. Rinse well with water, let cushions air dry.

***Note: Check detergent label to make sure it does not contain ammonia.**



WEAVING TRADITIONAL ARTISTRY WITH MODERN INNOVATION



WARRANTY INFORMATION

Since 1983, Lloyd Flanders® has created a reputation for excellent product and customer satisfaction. Lloyd Flanders® Casual Furniture is available through the finest specialty and furniture retailers across the nation. We will work through our retail partners to assure you, the consumer, the highest level of customer satisfaction and support. Our warranty is extended through our retail partners.

This warranty covers all defects in workmanship or materials of your Lloyd Flanders® product for the original owner.

- **Frames and finishes are warranted for a period of three years.**
- **Fabric and cushions are warranted for a period of one year.**
- **Stone Tops are warranted for a period of one year.**
- **All warranty coverage begins with the original retail purchase date.**

Proper maintenance of your product is required to support the benefits of this warranty. This includes but is not limited to the owner's annual inspection of the frames and touch-up of any minor damage of the product. This warranty is voided in the event that there are indications of abuse or neglect to the furniture.

For service under this warranty contact your Lloyd Flanders® Retailer from which you purchased the product. Your retailer will require the proof of purchase receipt including the date of purchase. They will also request that you provide photographs of the product to submit to Lloyd Flanders®.

Lloyd Flanders® will review your warranty claim and determine the most appropriate corrective action. Lloyd Flanders® will repair or replace any part of the product or the entire product at our sole discretion if it is determined that the product is defective in material or workmanship. Repair or replacement will be at no charge to you.

Freight to and from the factory will be paid by Lloyd Flanders®. A representative from Lloyd Flanders® may visit to inspect the defective product as part of the review process.

This warranty applies only to residential use of the Lloyd Flanders® products.

This warranty gives you specific legal rights. All other warranties, including the warranties of merchantability and fitness for a particular purpose, are expressly disclaimed.

This warranty is effective on product purchased at retail after September 1, 2016.



LLOYD FLANDERS®
WOVEN FOR LIFE

LLOYDFLANDERS.COM