

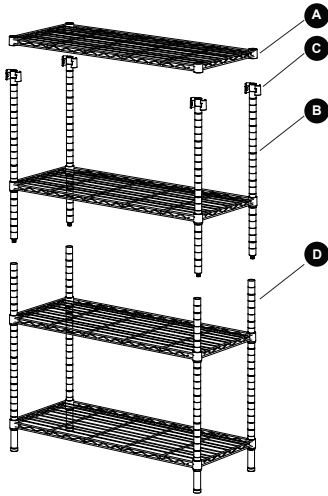
CARE AND MAINTENANCE

Never use abrasive or acid-based cleaners on the shelf rack.  
Clean shelves and rods with a solution of mild detergent and water. Use a soft cloth or sponge to wipe parts. Rinse and dry thoroughly. Keep surfaces dry and clean for a longer lasting finish.

NOTICE

Please read and understand these instructions before attempting to assemble, operate or install the product.

- Two adults required for a assembly.
- Do not allow children to climb or play in or around the shelves.
- Each shelf holds up to 160 lbs. when items are evenly distributed.
- Assemble on a soft surface, such as carpeting to avoid scratching the finish.



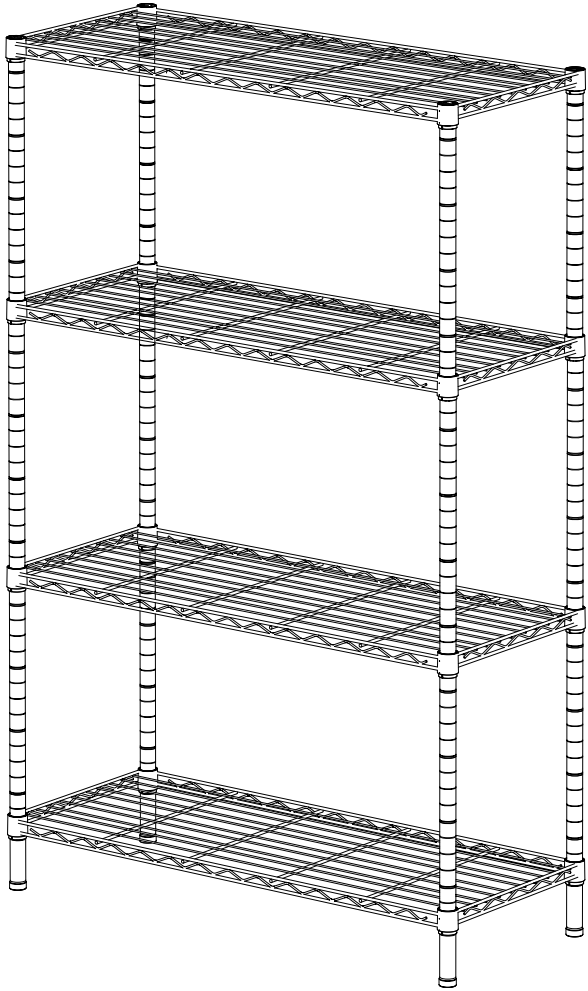
Part	Description	Picture	Quantity
A	Shelves		4
B	Upper Pole (with Joiner)		4
C	Spacers		18
D	Lower Pole (with leveler)		4

PREPARATION

- 1.Before beginning assembly of product, make sure all parts are present. Compare parts with package contents list and hardware contents . If any part is missing or damaged, do not attempt to assemble the product.
- 2.Estimated Assembly Time: Approximately 15 - 20 minutes.
- 3.Helpful Tools (not included):Rubber Mallet.
- 4.No Tools Required for Assembly.



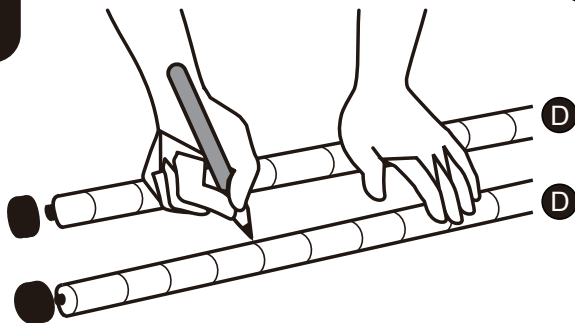
Model# HAC2001A, HAC2001B



36 in W x 14 in D x 54 in H

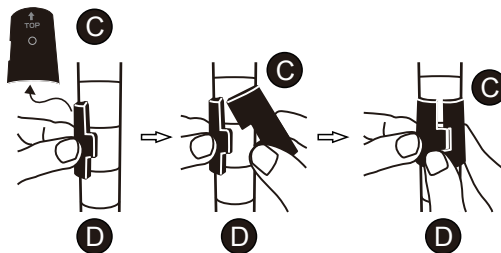
# Assembly Instructions

1



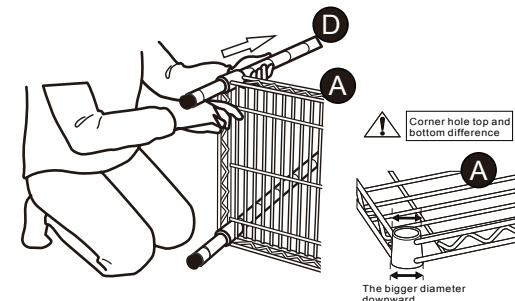
Use a pen to mark the height on the 4 Lower Poles (D). Be sure all poles are marked in the same location.

2



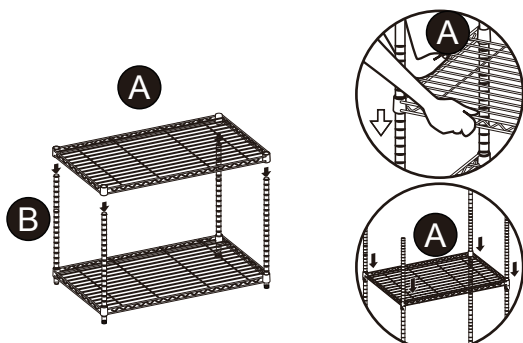
Attach 2 Spacers (C) at the pen marks on the 4 Lower Poles (D). Keep the arrows on the spacers (C) pointed upwards.

3



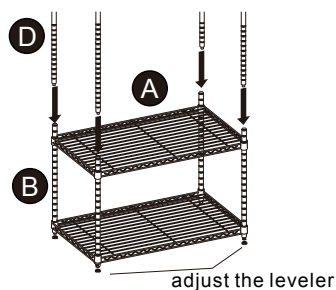
Place the Lower Poles (D) through the corner holes of 1 Shelf (A). Fit the shelf carefully and securely over the Spacers (C).

4



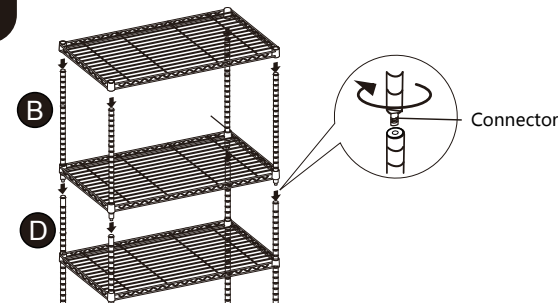
Install the second Shelf (A) following steps 2-3.

5



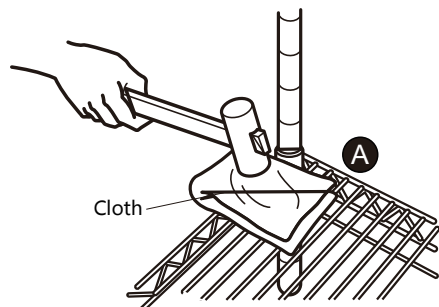
Screw the Upper Pole (B) onto the threaded ends of the Lower Poles (D). Be sure the connection is secure & tight.

6



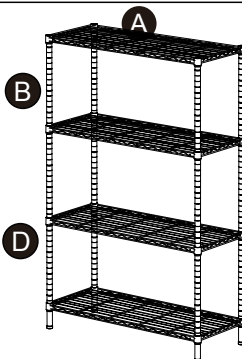
Install remaining Shelves (A) following steps 2-3.

7



Use the rubber mallet to tap the shelves into place for a secure fit. Use a soft cloth between the shelf & mallet to prevent damage to the shelf.

8



Assembly is Complete.