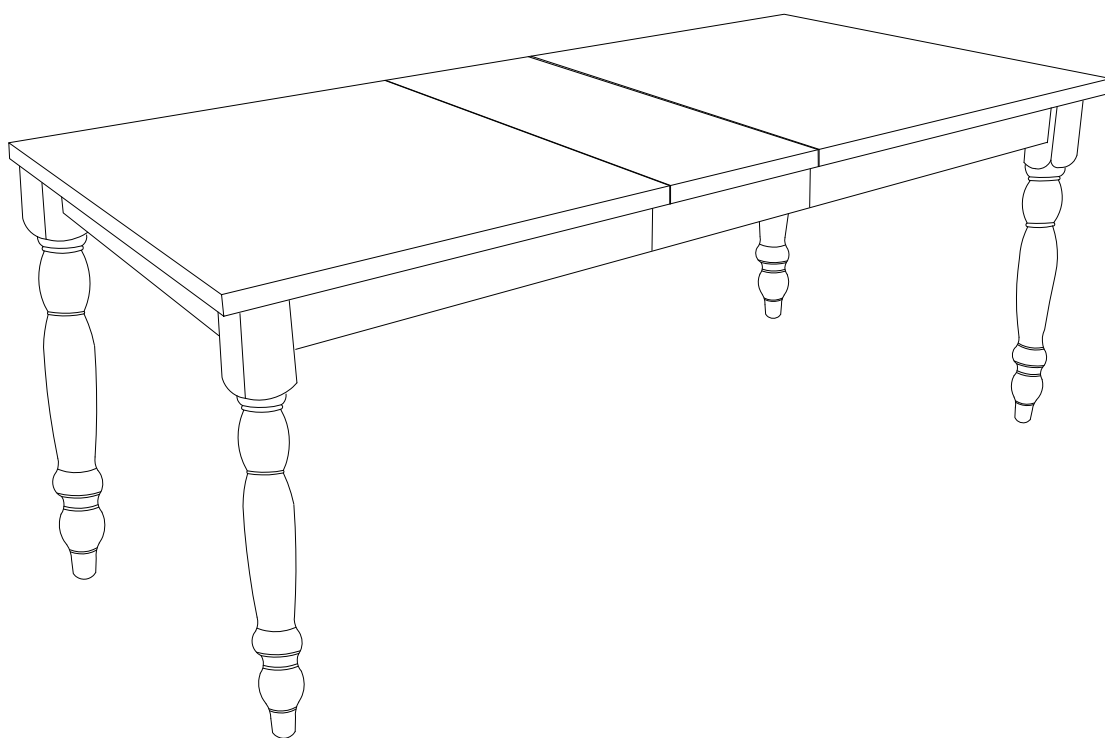




Item # : TW60TL
Assembly Instructions

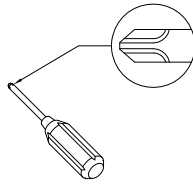


*Please visit our website for the most current instructions, assembly tips, report damage, or request parts. **www.walkeredison.com***

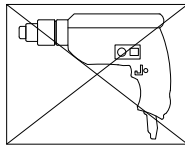
Revised 03/2018

General Assembly Guidelines

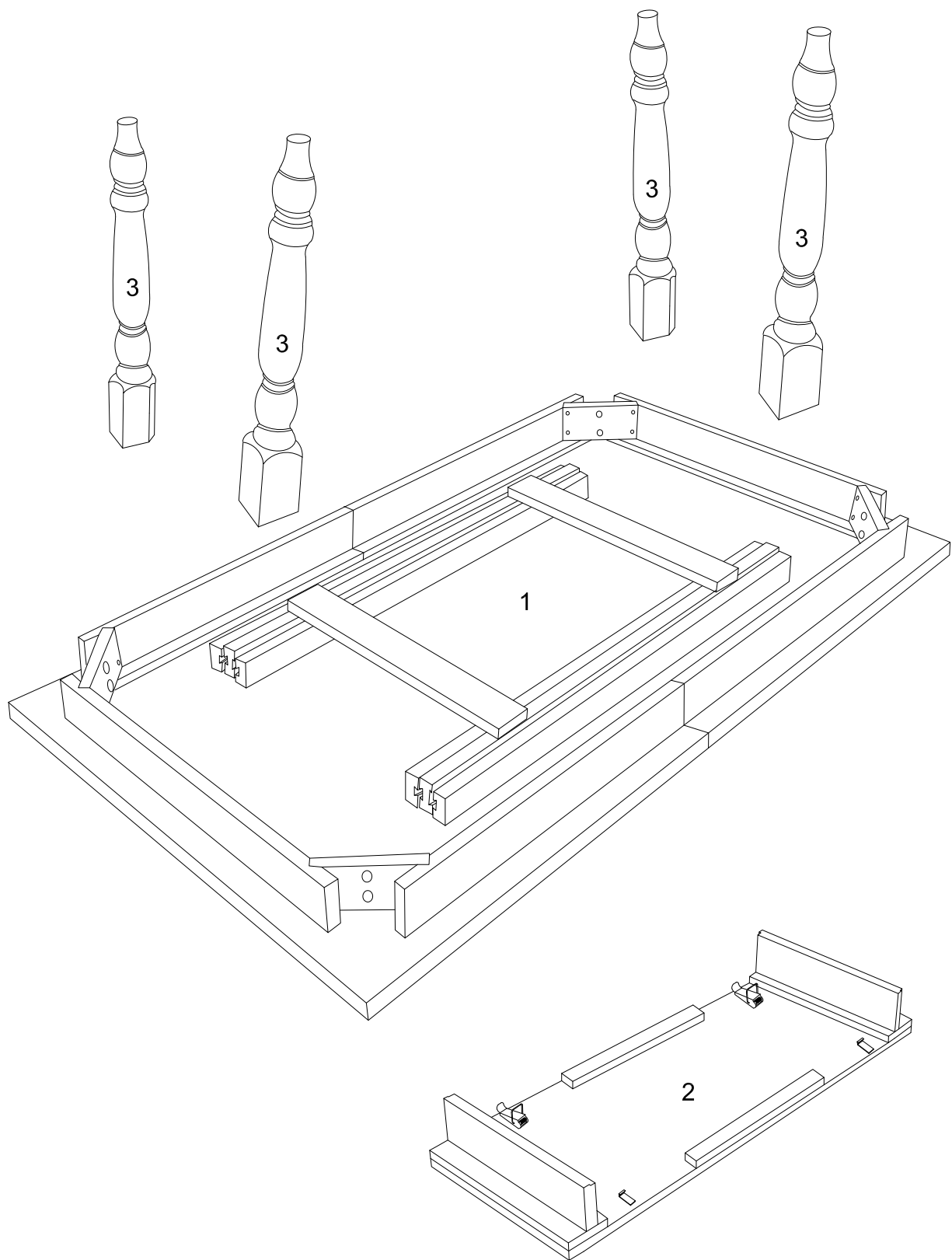
- I. Ensure that all parts and hardware are available before beginning assembly.
- II. Follow each step carefully to ensure the proper assembly of this product.
- III. Two people are recommended for ease in the assembly of this product.
- IV. The two main types of hardware used to assemble this product are : screws and bolts.
- V. A Phillips head screwdriver is required for the assembly of this product .







- VI. Power tools should not be used to assemble this product .

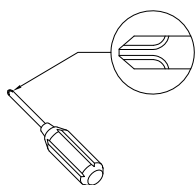


Parts List



Hardware List

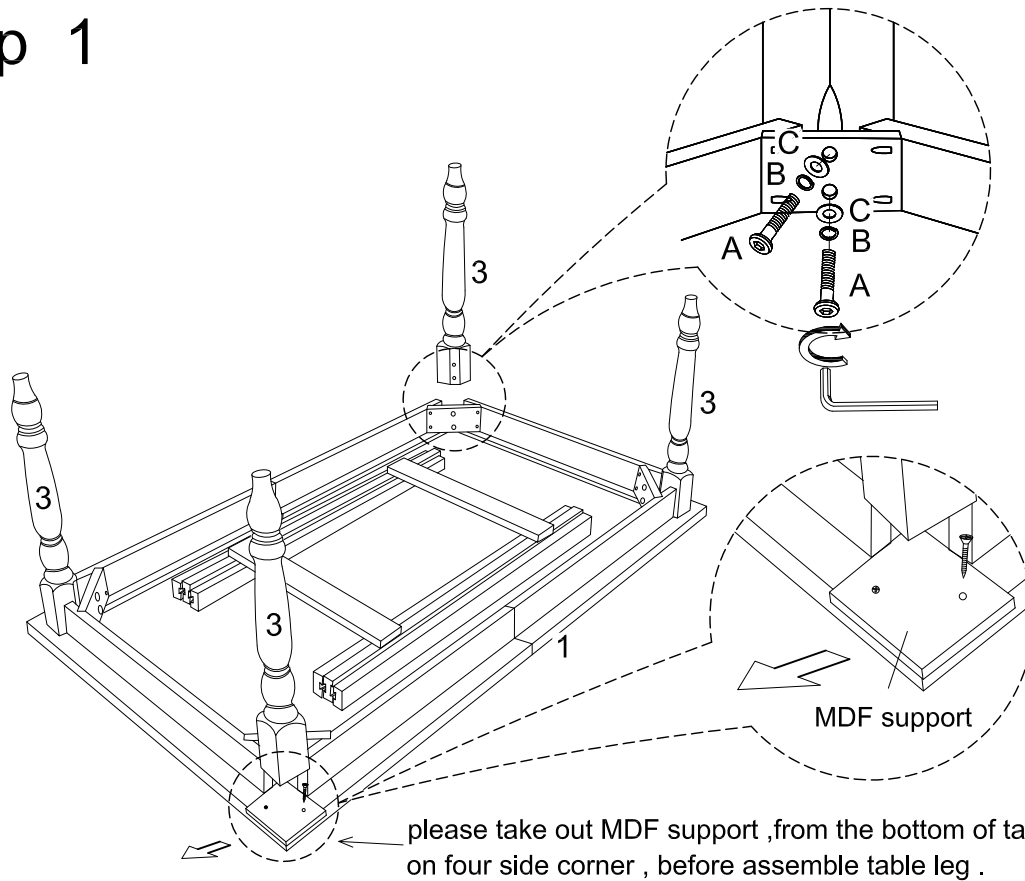
A		M8*70	Bolt	8 pcs
B		5 / 16 "	Spring washer	8 pcs
C		5 / 16 "	Washer	8 pcs
D		M5	Wrench	1 pc



Philips head screwdriver required for assembly
(not included)

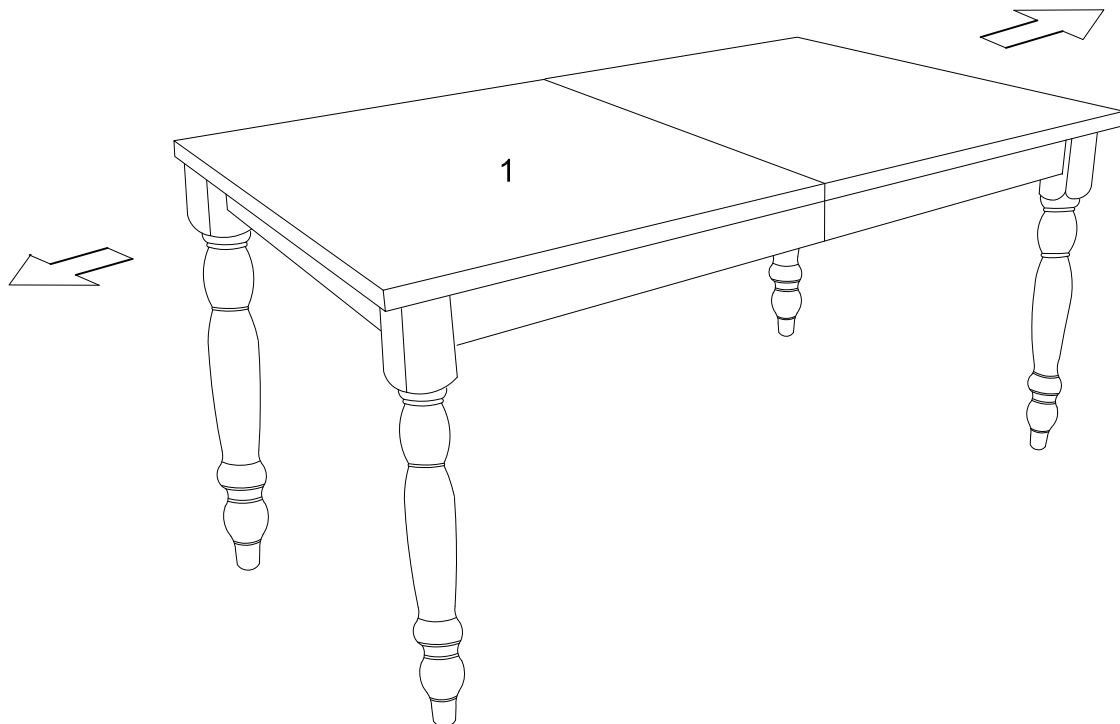
*The hardware quantities listed above are required for proper assembly.
Some extra hardware may also have been included.*

Step 1



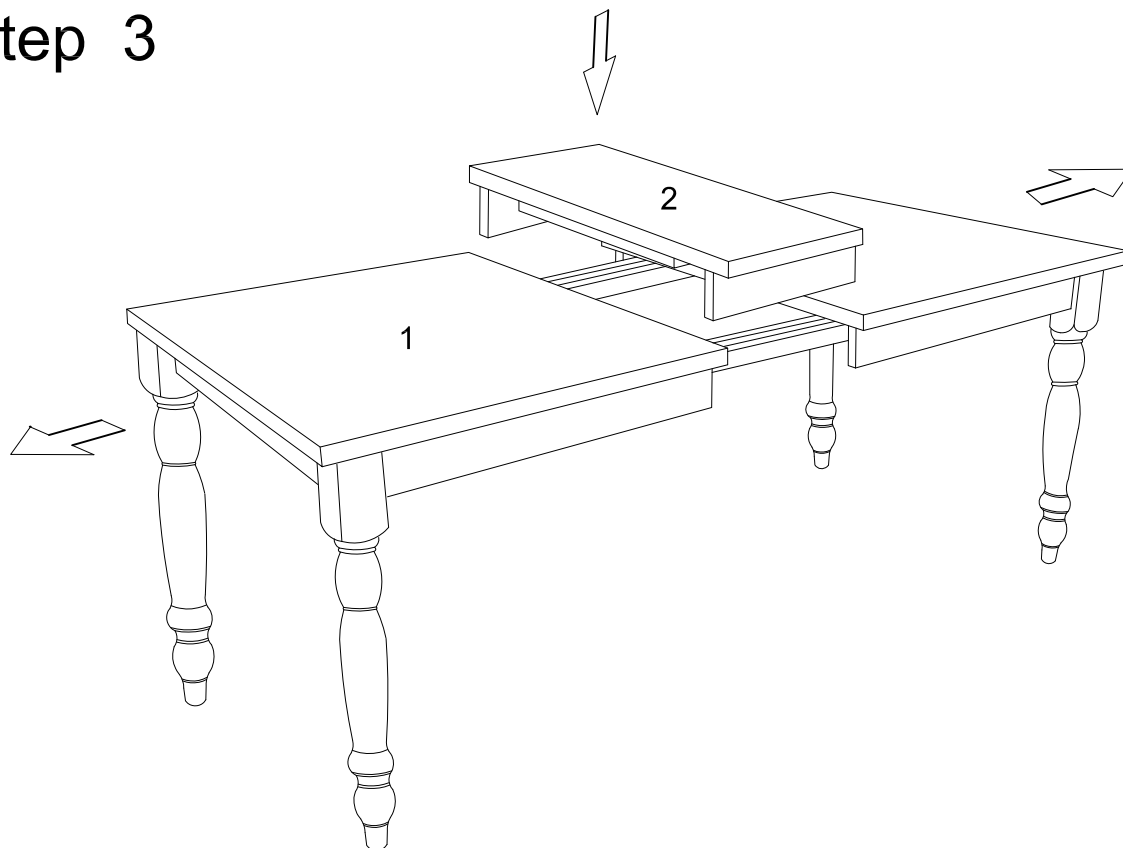
After removing the MDF support from the bottom of the table as shown in the diagram above, attach table legs (3) to table top (1) using bolts (A), washers (C), and spring washers (B).

Step 2



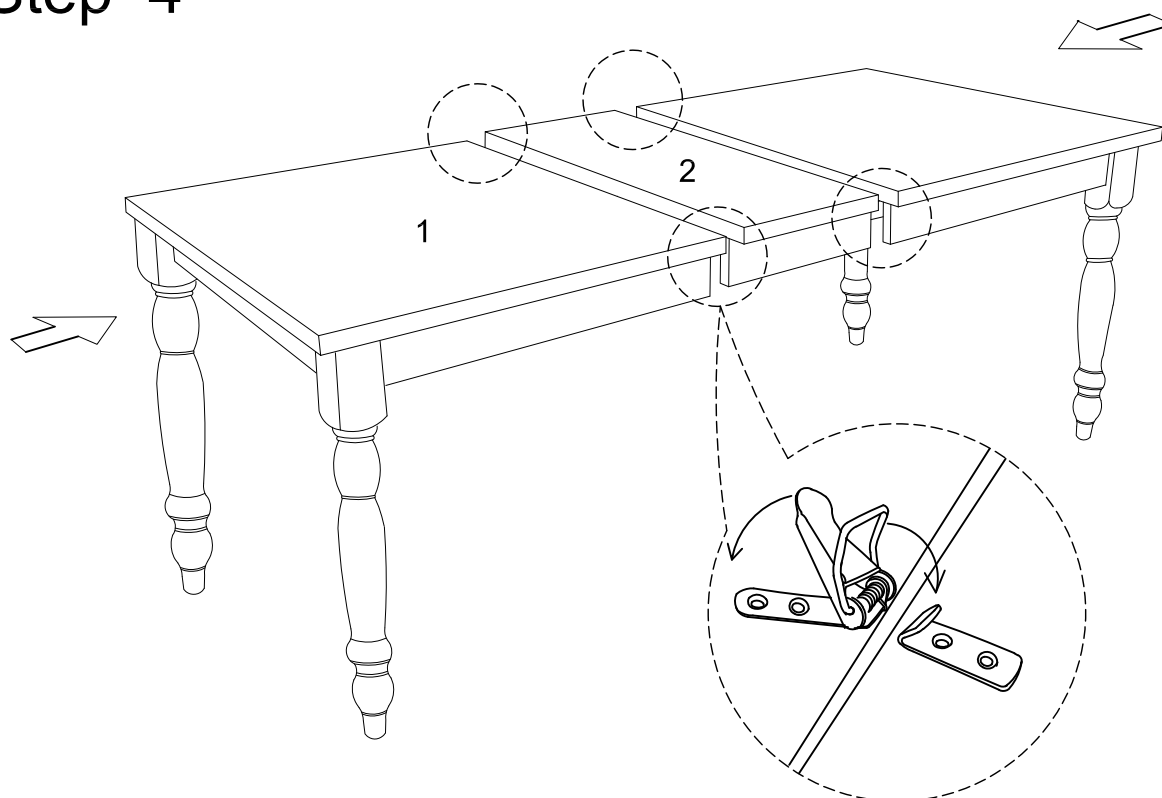
To insert the table leaf (2), carefully separate table top (1) by pulling the pieces in opposite directions.

Step 3



To use the table leaf, insert table leaf (2) vertically, as shown in the diagram above, Carefully push the table top pieces back together.

Step 4

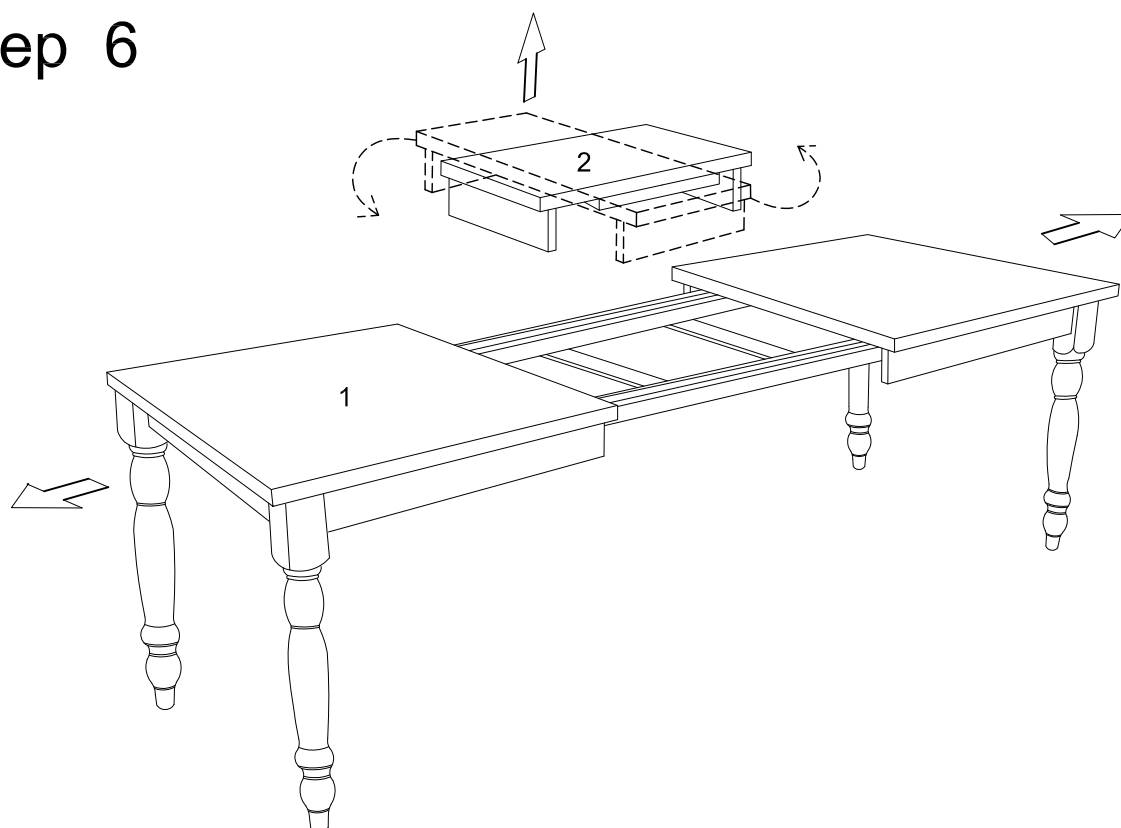


To store the table leaf (2), insert table leaf (2) vertically and latch the leaf using the latching mechanism as shown in the diagram above. After the table leaf is inserted, carefully push the table top pieces back together and latched.

Step 5

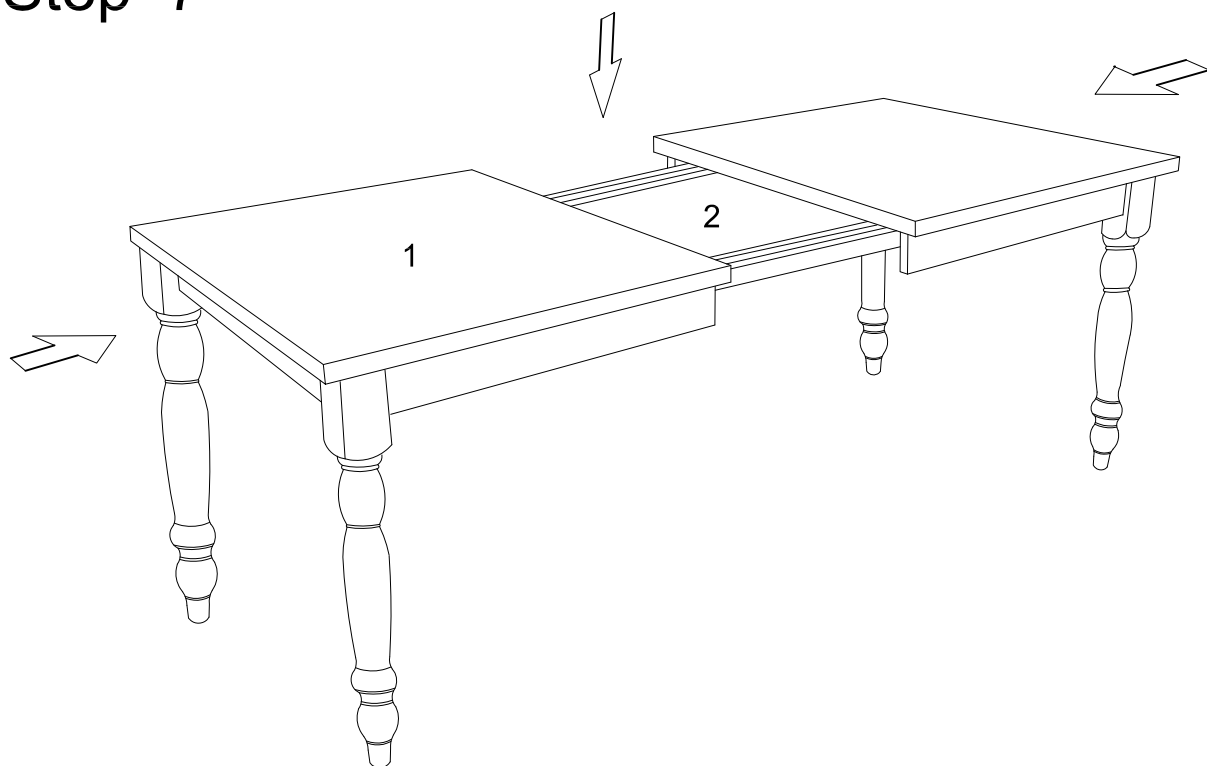


Step 6



To store the table leaf (2) by pulling the pieces in opposite directions and insert table leaf (2) horizontally .

Step 7



After table leaf is inserted, carefully push the table top pieces back together.

Step 8



Final Assembly