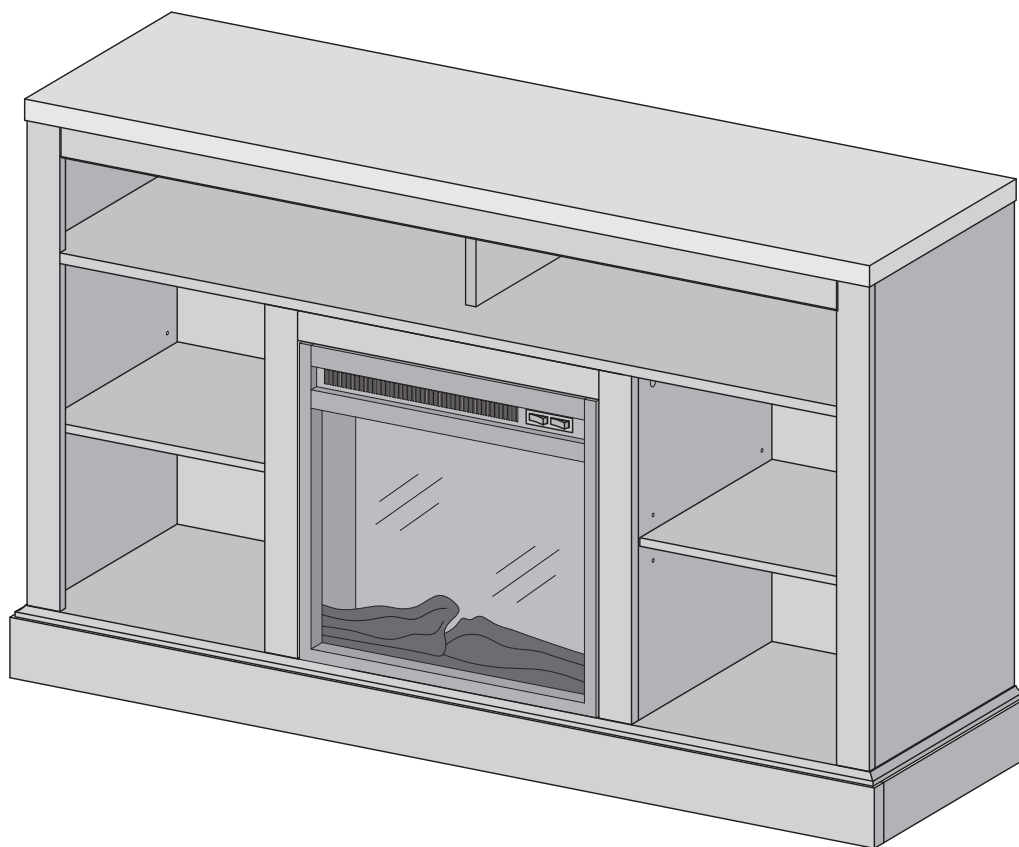




Item # : W52FP18WS
Assembly Instructions

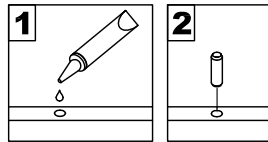


For the most current instructions, additional assembly tips, to report damage or request parts, please visit our website at www.walkeredison.com.

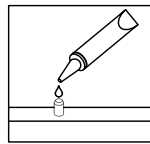
Revised 06/2017

General Assembly Guidelines

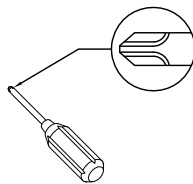
- I. Ensure that all parts and hardware are available before beginning assembly.
- II. Follow each step carefully to ensure the proper assembly of this product.
- III. Two people are recommended for ease in the assembly of this product.
- IV. The three main types of hardware used to assemble this product are : wood dowels , screws and bolts.
- V. The provided glue is to secure wood dowels in place . When first inserting dowels , locate the appropriate hole for the dowel , place a small amount of glue in the hole and insert the dowel . Wipe away excess glue immediately.



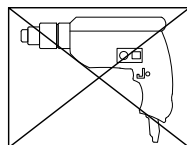
In future assembly steps when dowels are necessary to attach assembly parts together , place a small amount of glue on the end of the dowel before attaching parts together . Wipe away excess glue immediately.



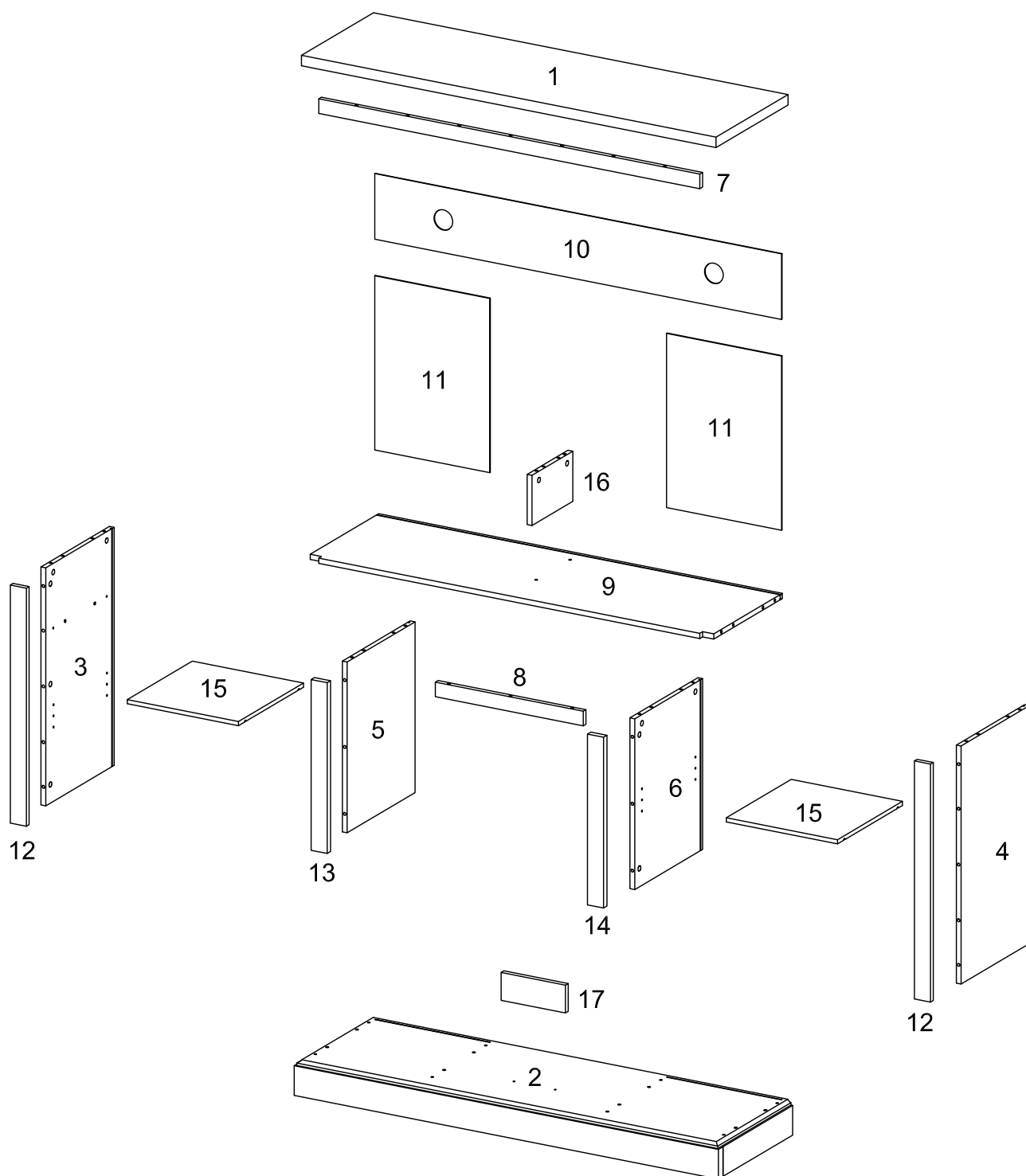
- VI. A Phillips head screwdriver is required for the assembly of this product .




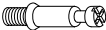



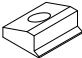
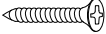
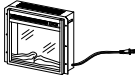
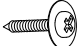




- VII. Power tools should not be used to assemble this product .

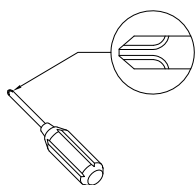


Parts List



Hardware List

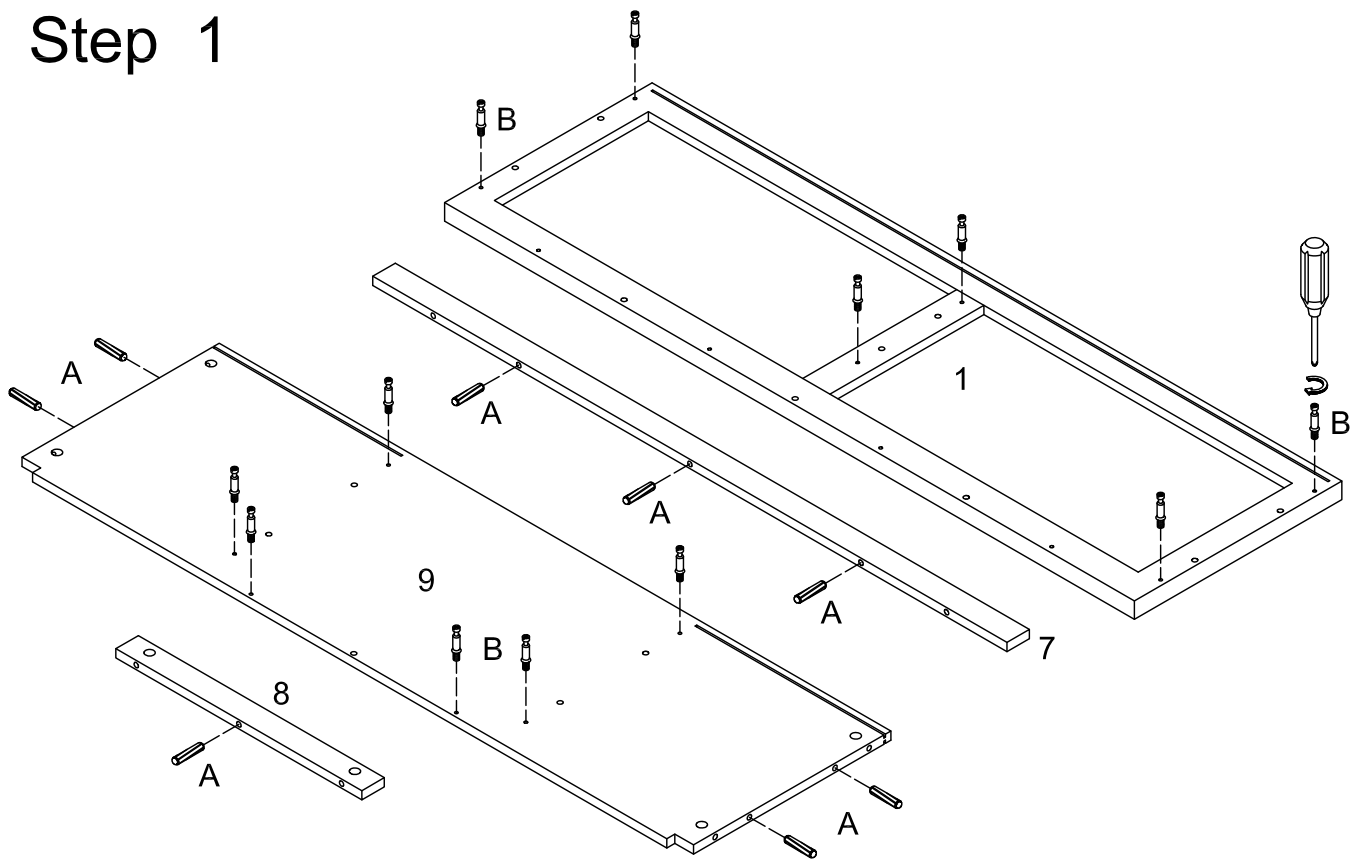
A		Ø8*30mm	Wooden dowel	32 pcs
B			Cam bolt	32 pcs
C		Ø15*11mm	Cam lock	32 pcs
D		Ø6*50mm	Bolt	6 pcs
E		Ø5*8*16mm	Shelf support pin	8 pcs
F			Plastic wedges	12 pcs
G		Ø3*17mm	Screw	12 pcs
H			Fireplace Insert (F18V66L)	1 pc
J		Ø3*12mm	Screw	6 pcs
K		Ø4*45mm	Screw	4 pcs
L			Sticker	32 pcs
M		Ø4mm	Wrench	1 pc
N			Glue tube	2 pcs



Philips head screwdriver required for assembly
(not included)

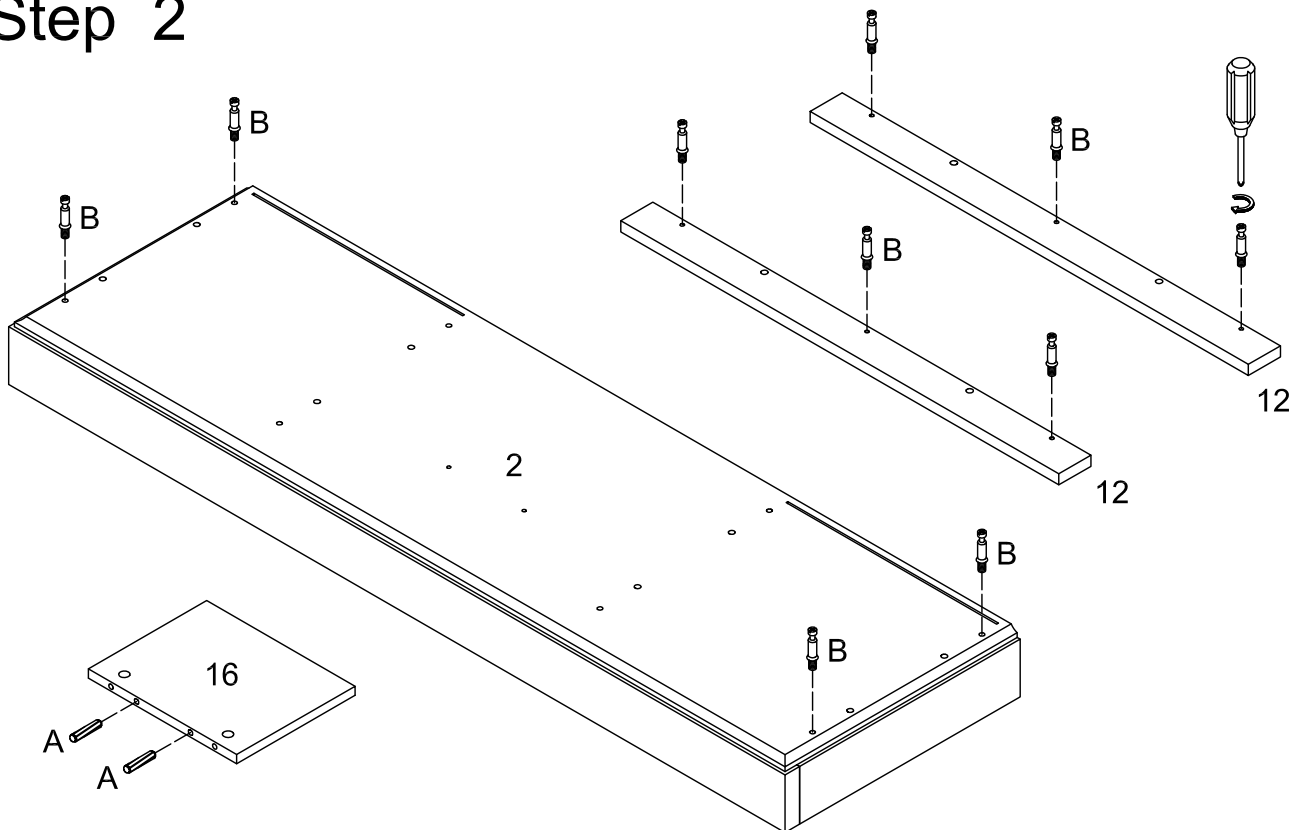
*The hardware quantities listed above are required for proper assembly.
Some extra hardware may also have been included.*

Step 1



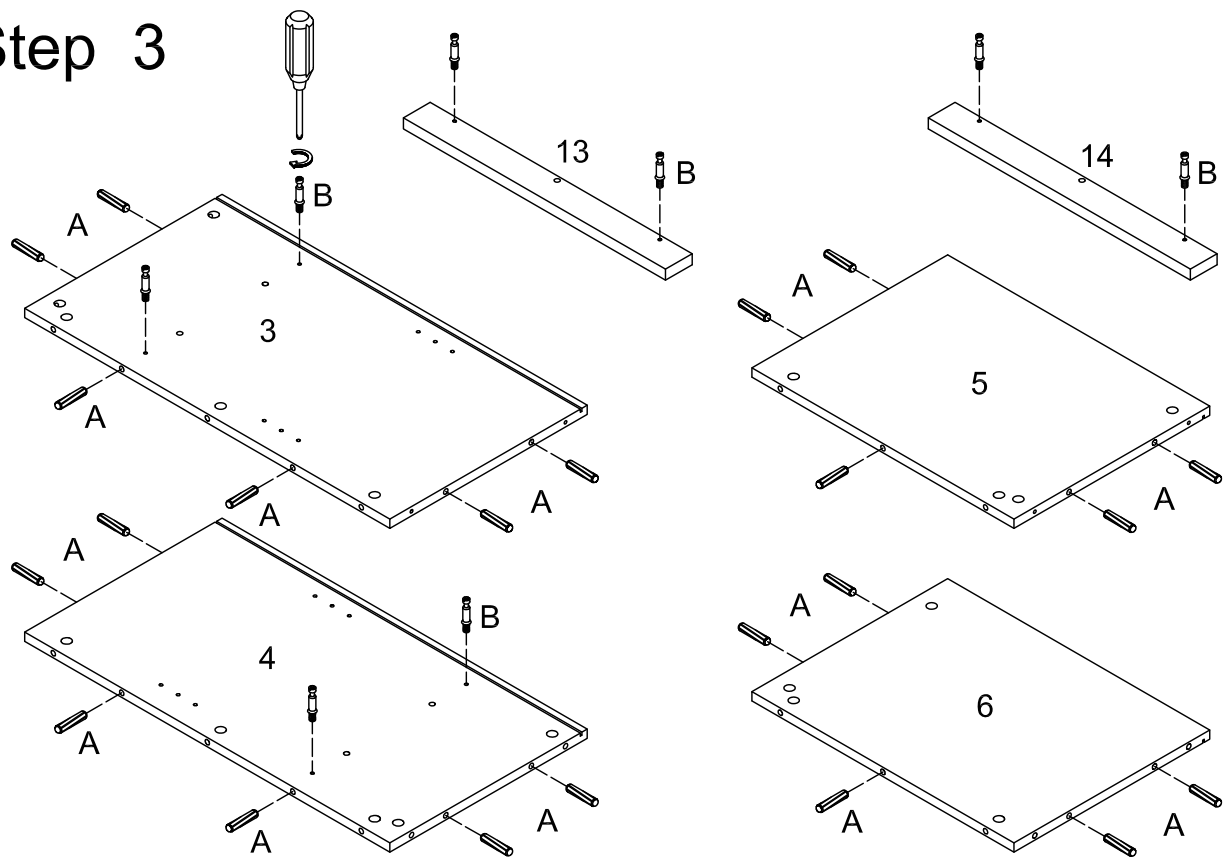
Insert wooden dowel (A) to parts (7,8) and panel (9). Secure cam bolt (B) to panel (9) and top panel (1).

Step 2



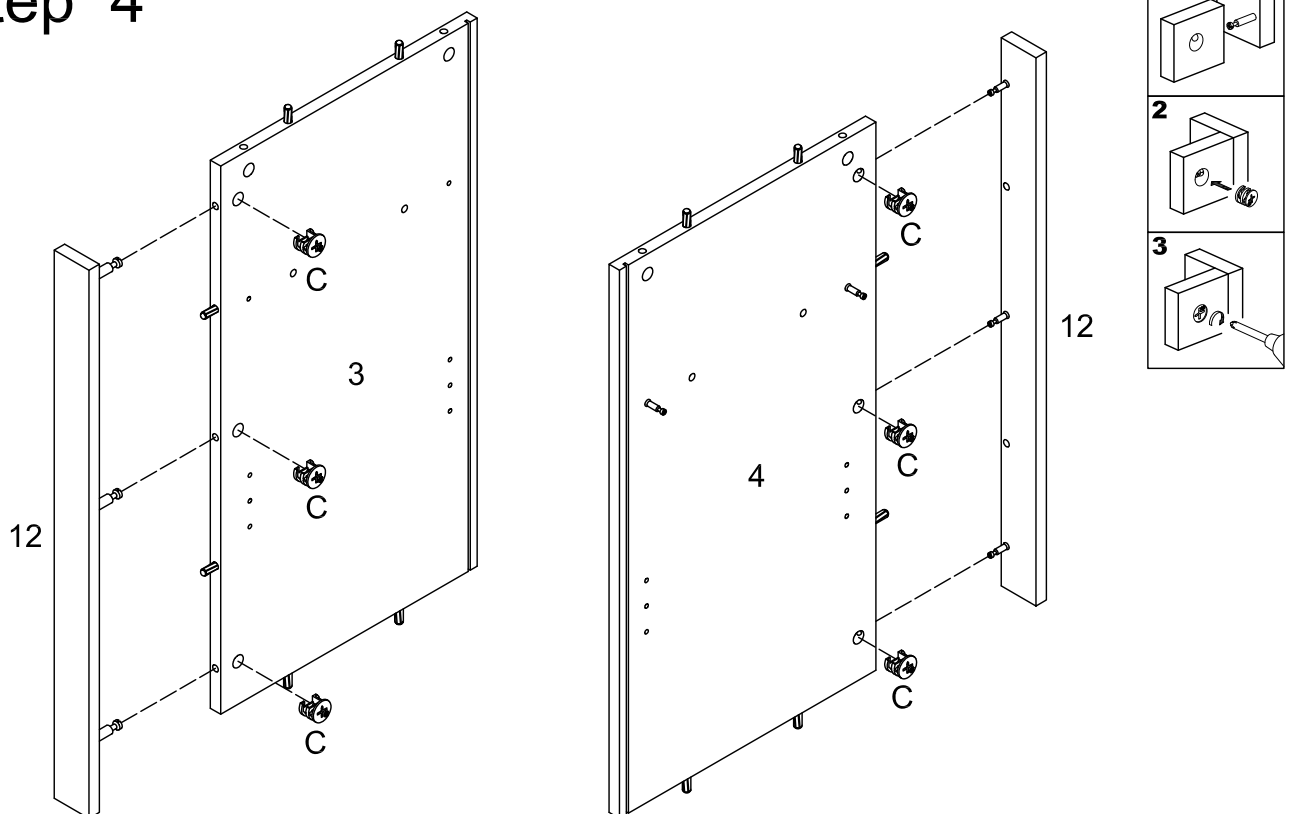
Insert wooden dowel (A) to parts (16). Secure cam bolt (B) to parts (12) and bottom panel (2).

Step 3



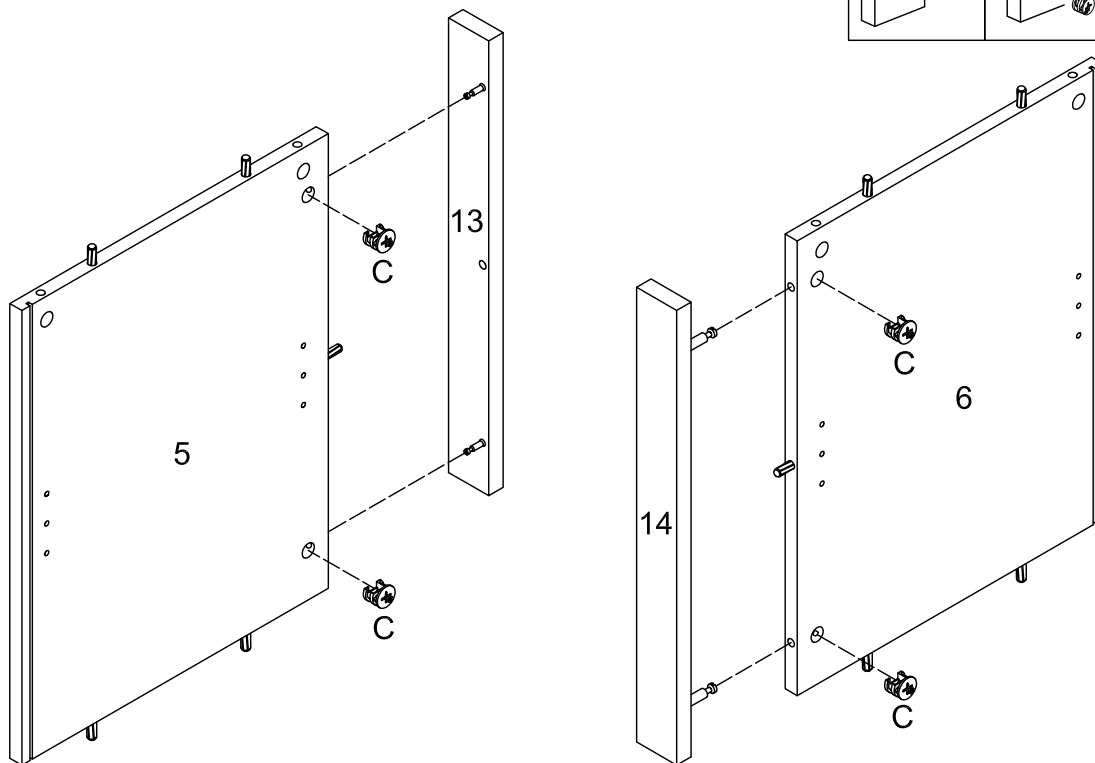
Insert wooden dowel (A) to side panel (3,4,5,6). Secure cam bolt (B) to side panel (3,4) and parts (13,14).

Step 4



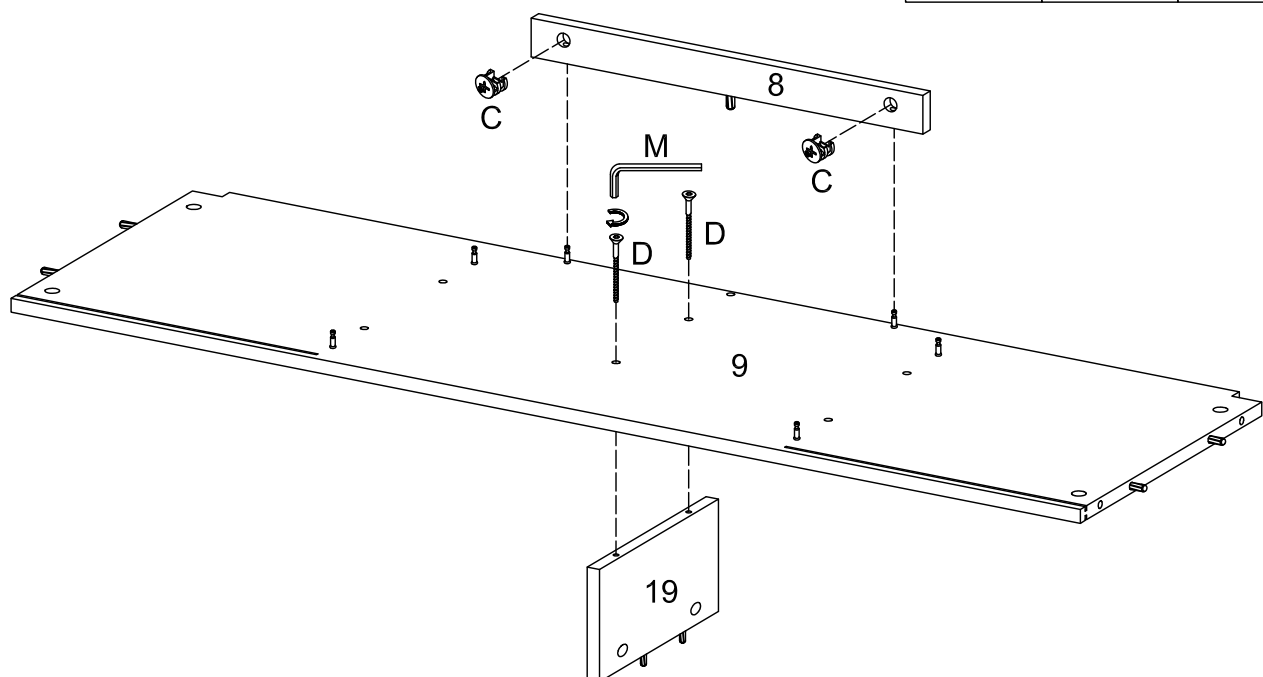
Insert parts (12) into side panel (3,4), then insert and secure cam lock (C) to side panel (3,4) to lock it.

Step 5



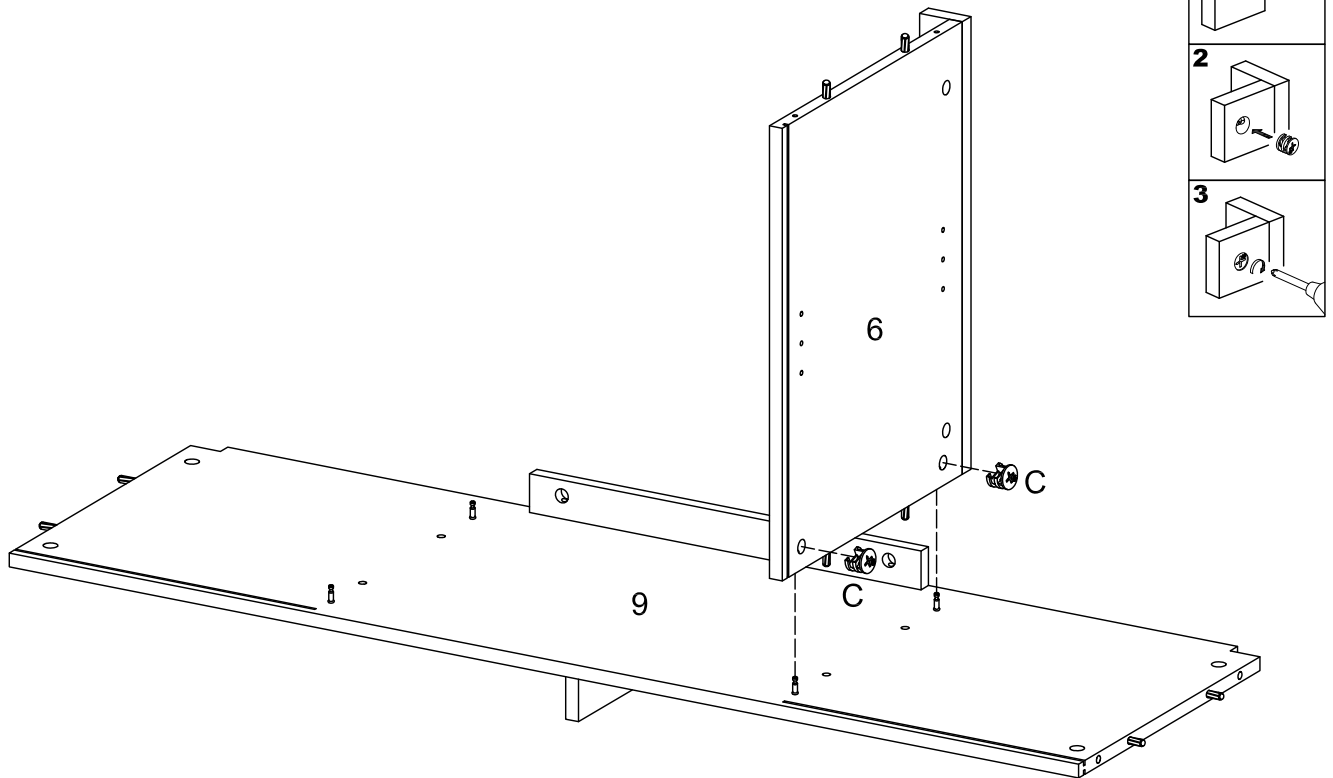
Insert parts (13,14) into side panel (5,6), then insert and secure cam lock (C) to side panel (5,6) to lock it.

Step 6



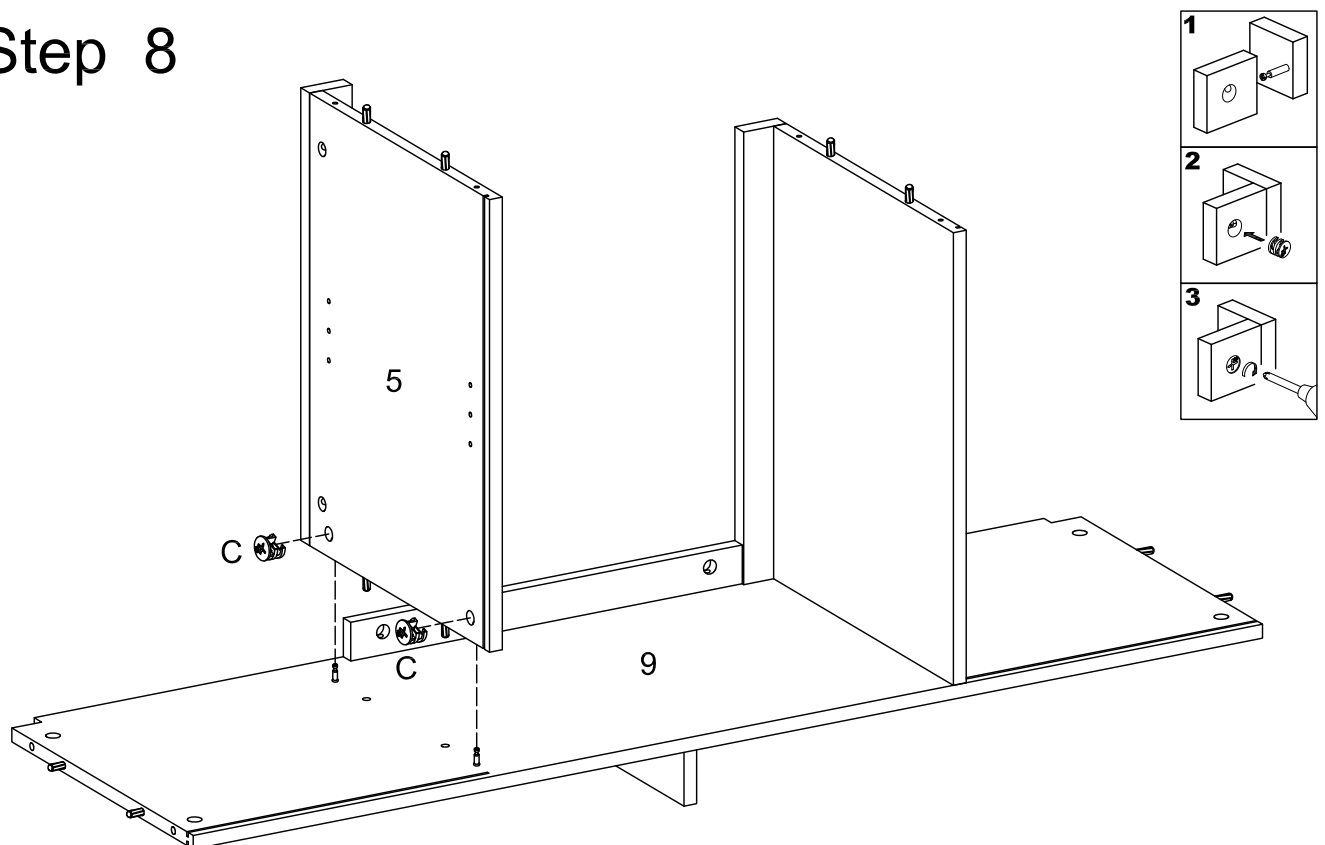
Insert parts (19) into panel (9), then use wrench (M) and bolt (D) to secure it.
Insert parts (8) into panel (9), then insert and secure cam lock (C) to parts (8) to lock it.

Step 7



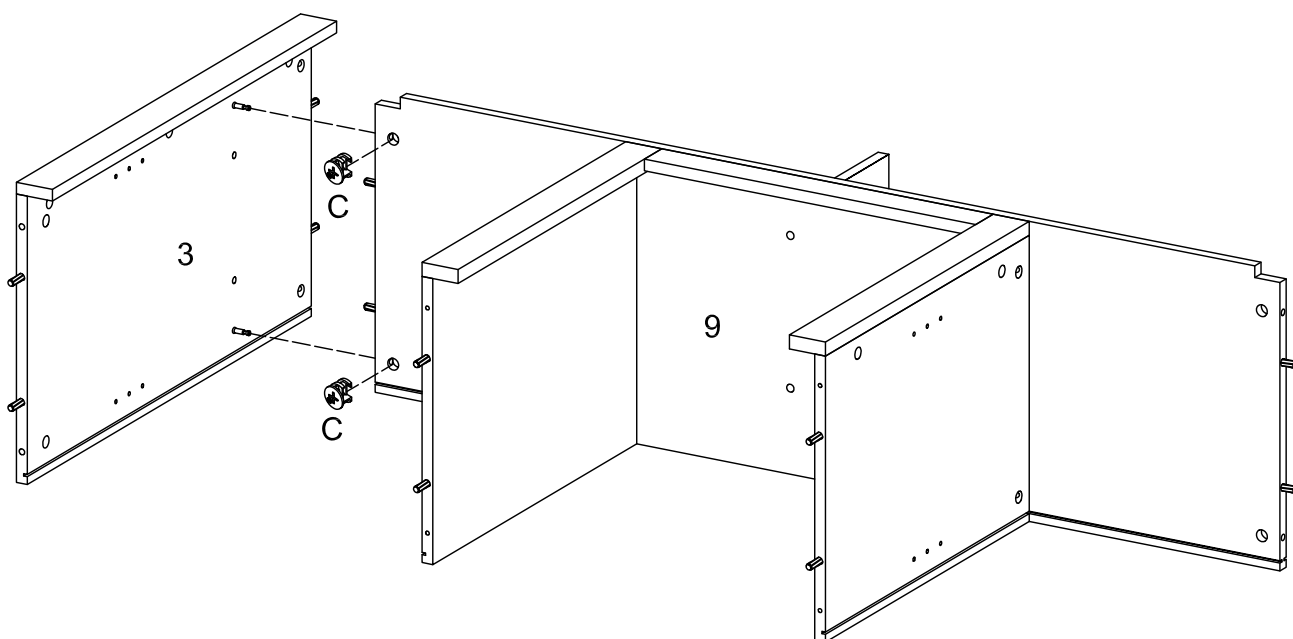
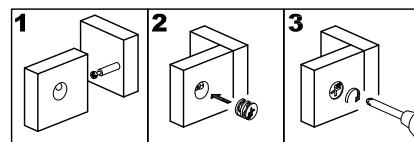
Insert side panel (6) into panel (9), then insert and secure cam lock (C) to side panel (6) to lock it.

Step 8



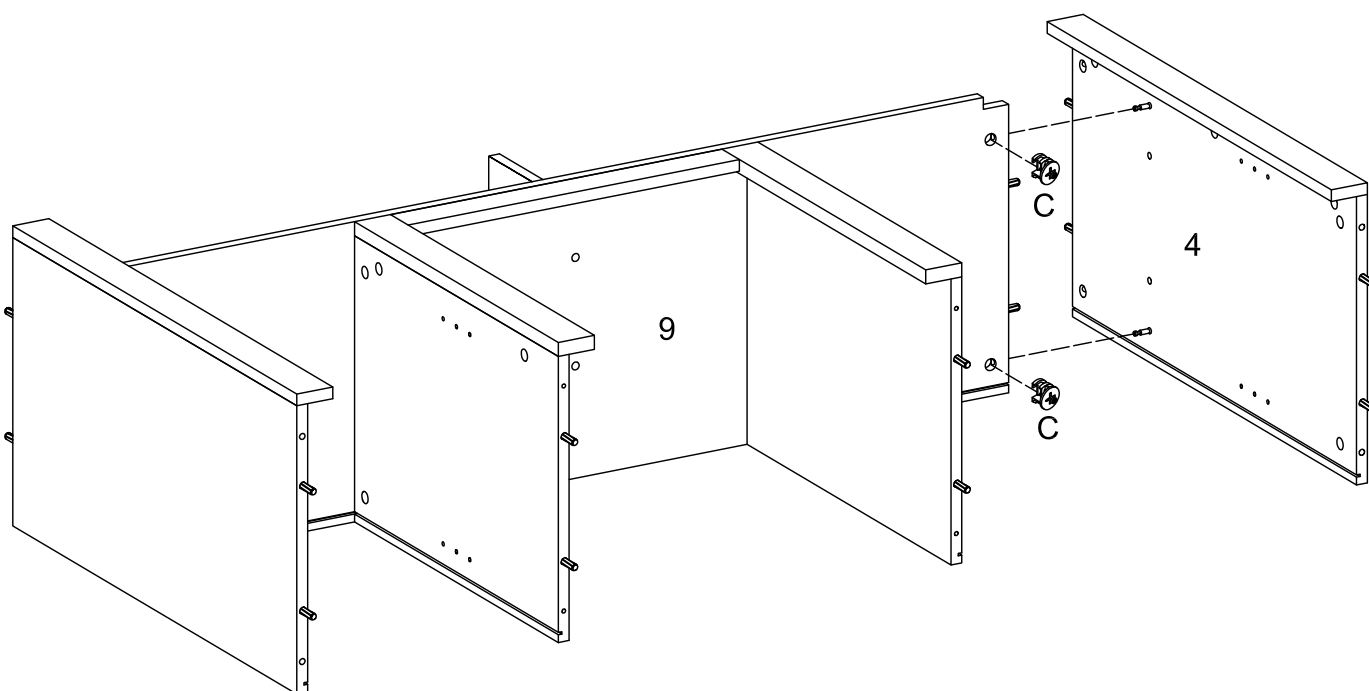
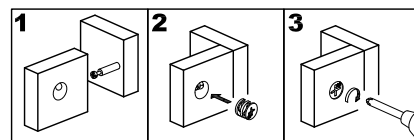
Insert side panel (5) into panel (9), then insert and secure cam lock (C) to side panel (5) to lock it.

Step 9



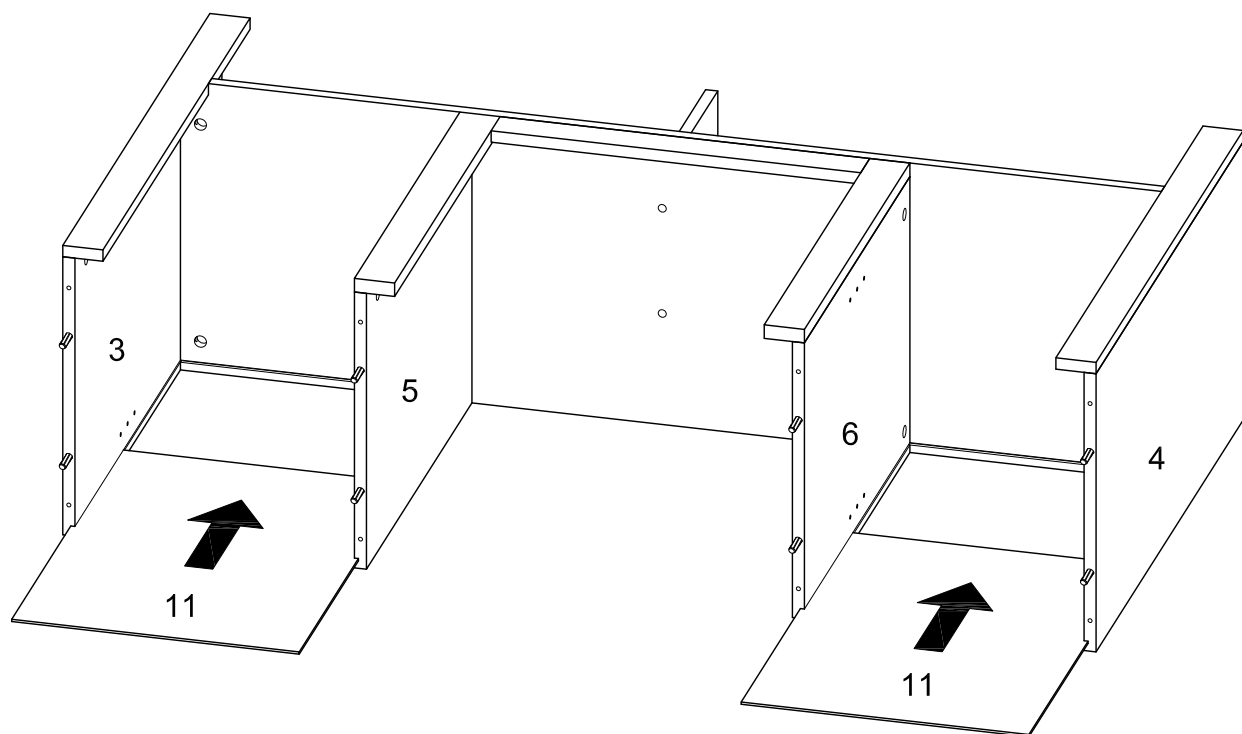
Insert side panel (3) into panel (9), then insert and secure cam lock (C) to panel (9) to lock it.

Step 10



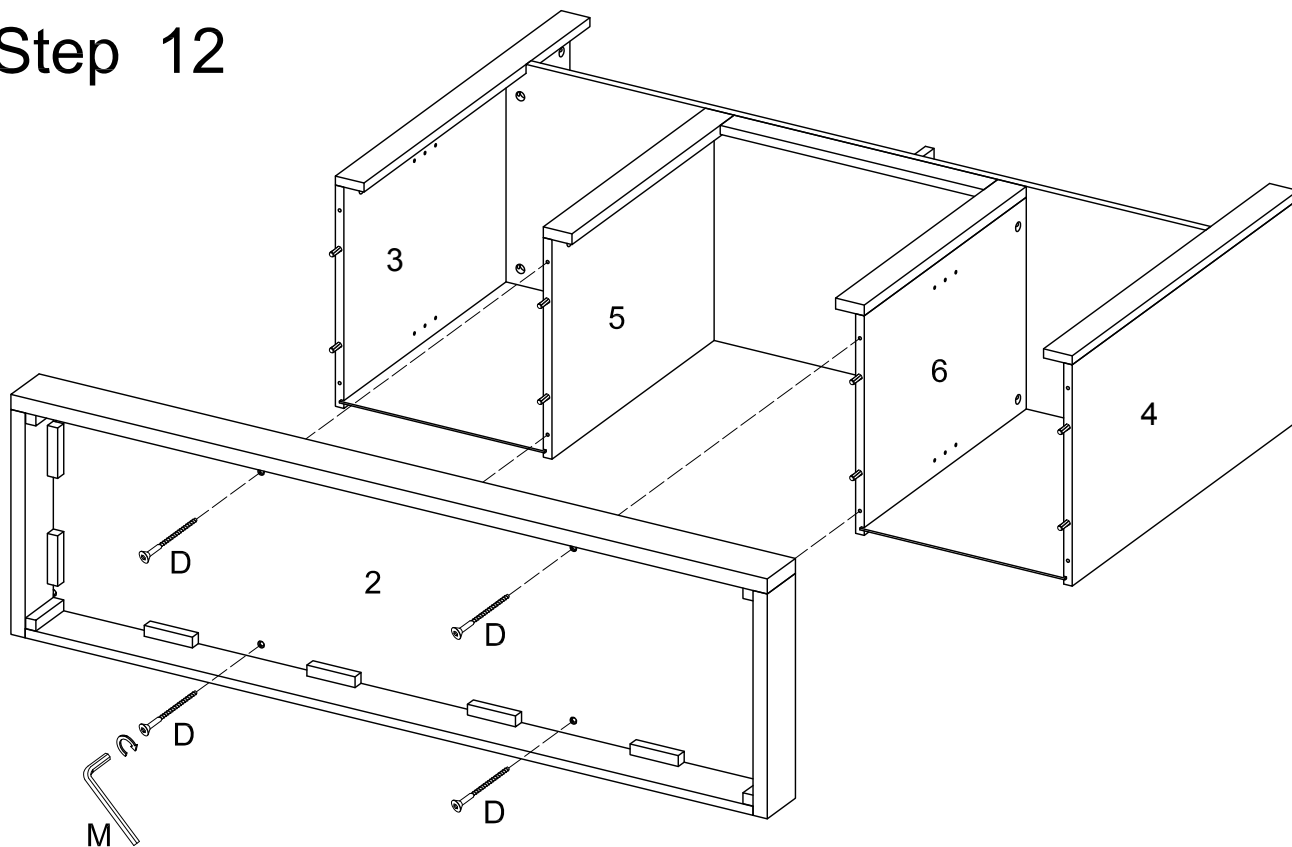
Insert side panel (4) into panel (9), then insert and secure cam lock (C) to panel (9) to lock it.

Step 11



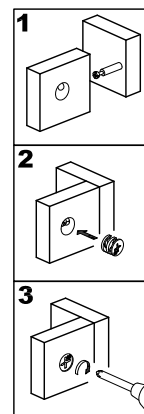
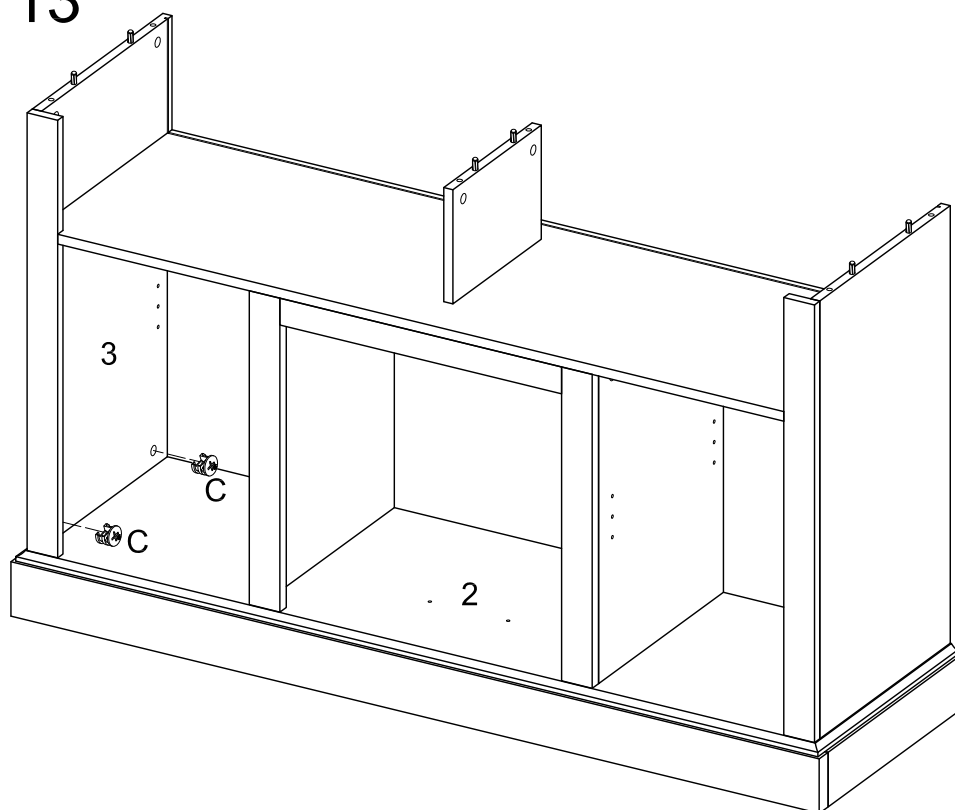
Insert back panel (11) through side panel (3,5,6,4) as per diagram.

Step 12



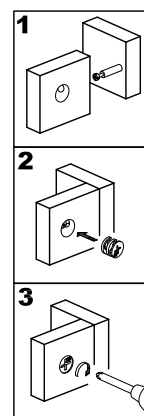
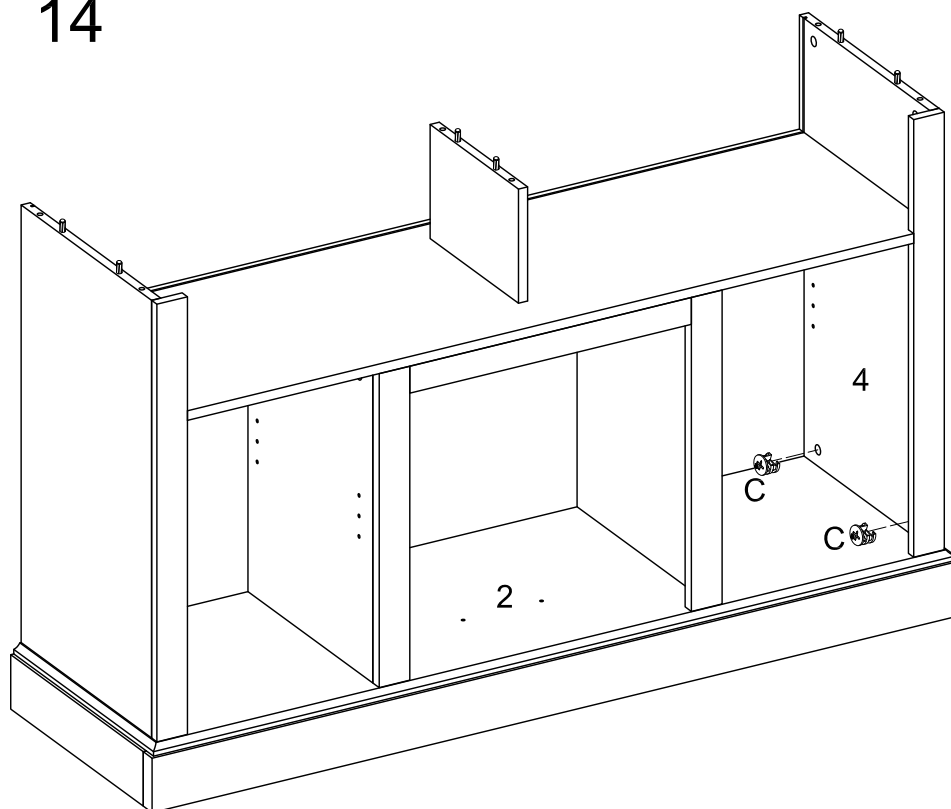
Insert bottom panel to side panel (3,4,5,6), then use wrench (M) to secure it with bolt (D).

Step 13



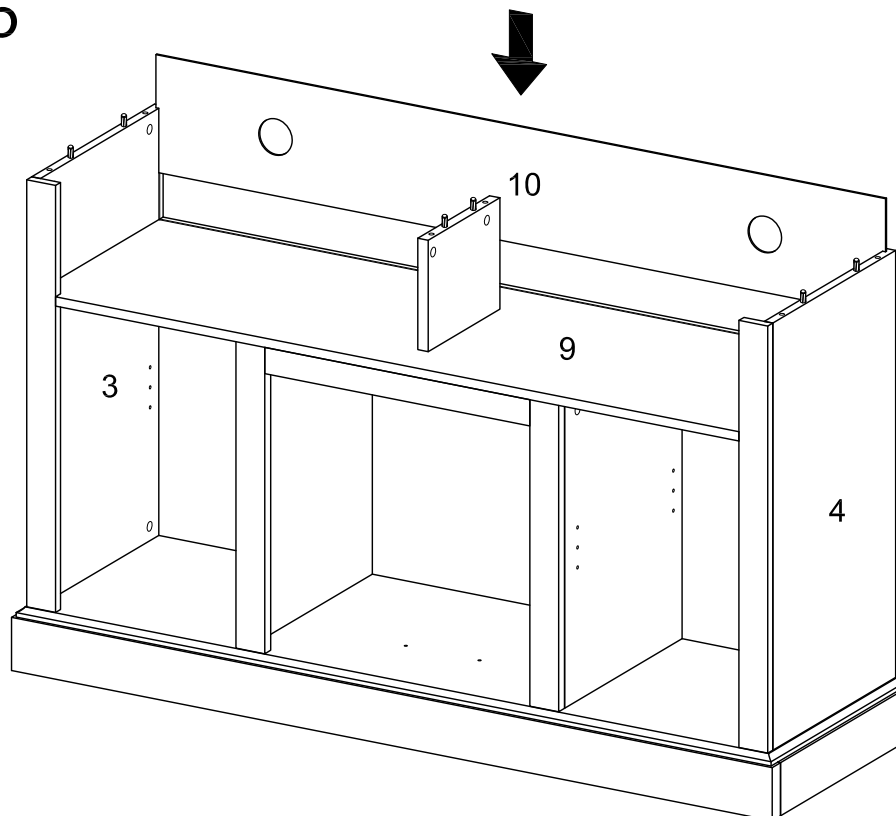
Insert and secure cam lock (C) to side panel (3) to lock it.

Step 14



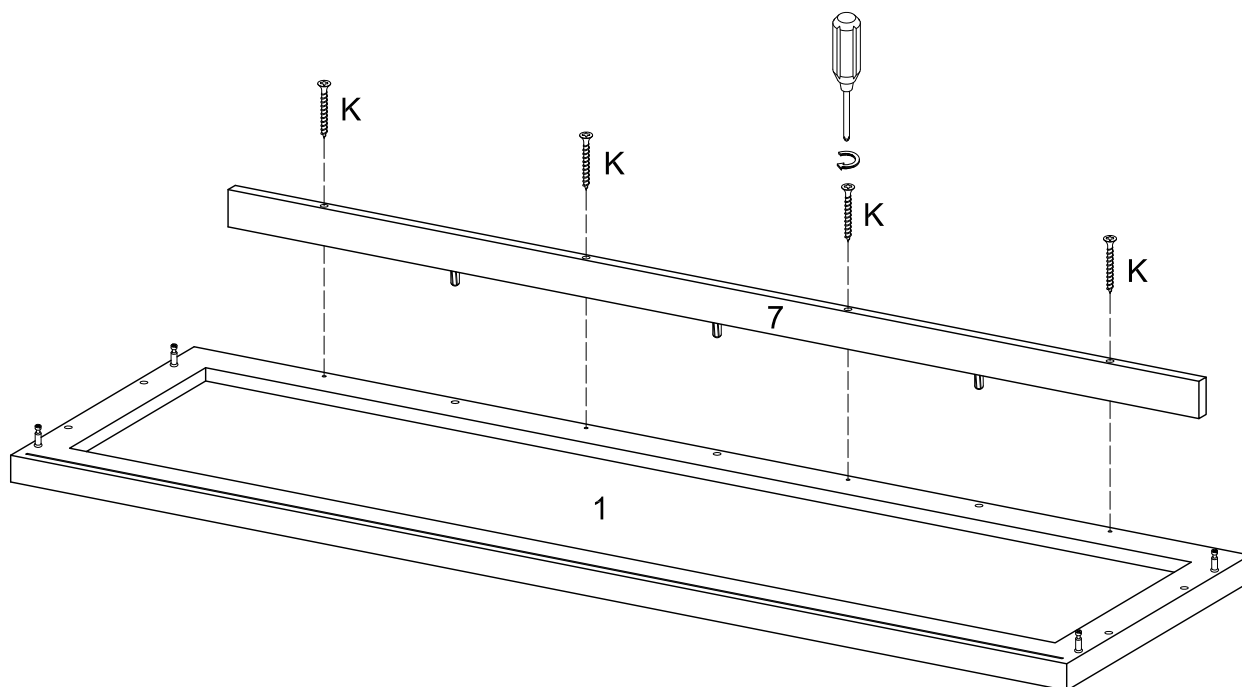
Insert and secure cam lock (C) to side panel (4) to lock it.

Step 15



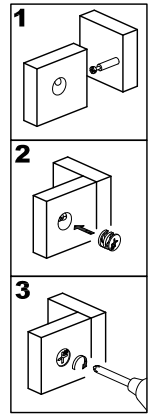
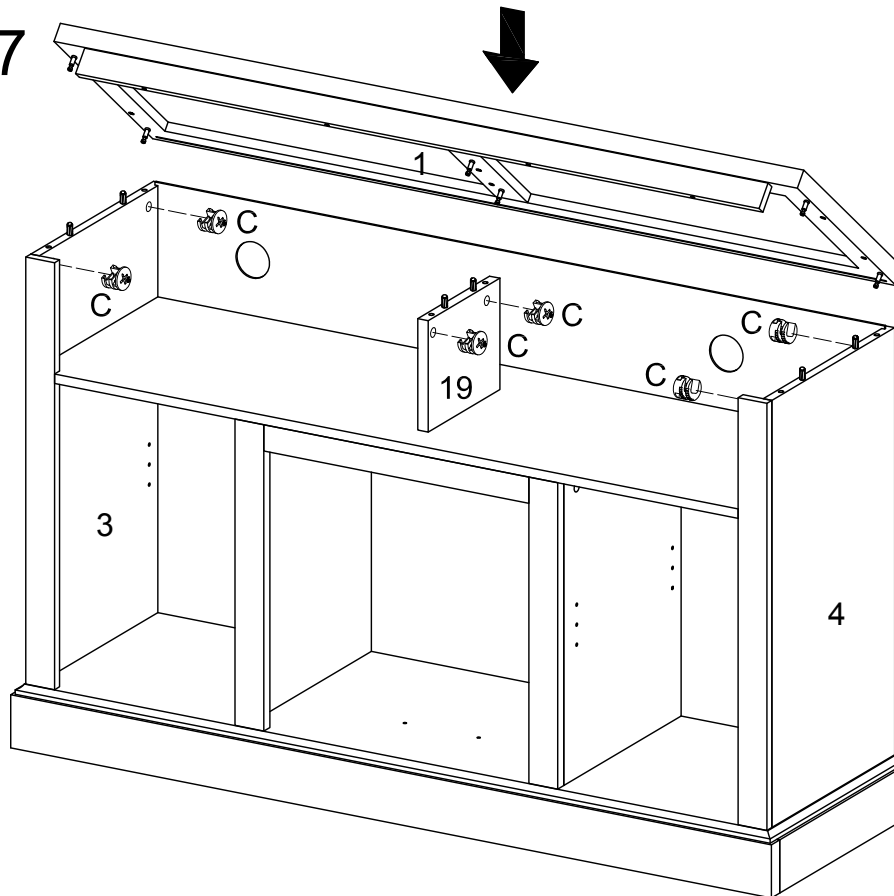
Insert back panel (10) through side panel (3,4) as per diagram.

Step 16



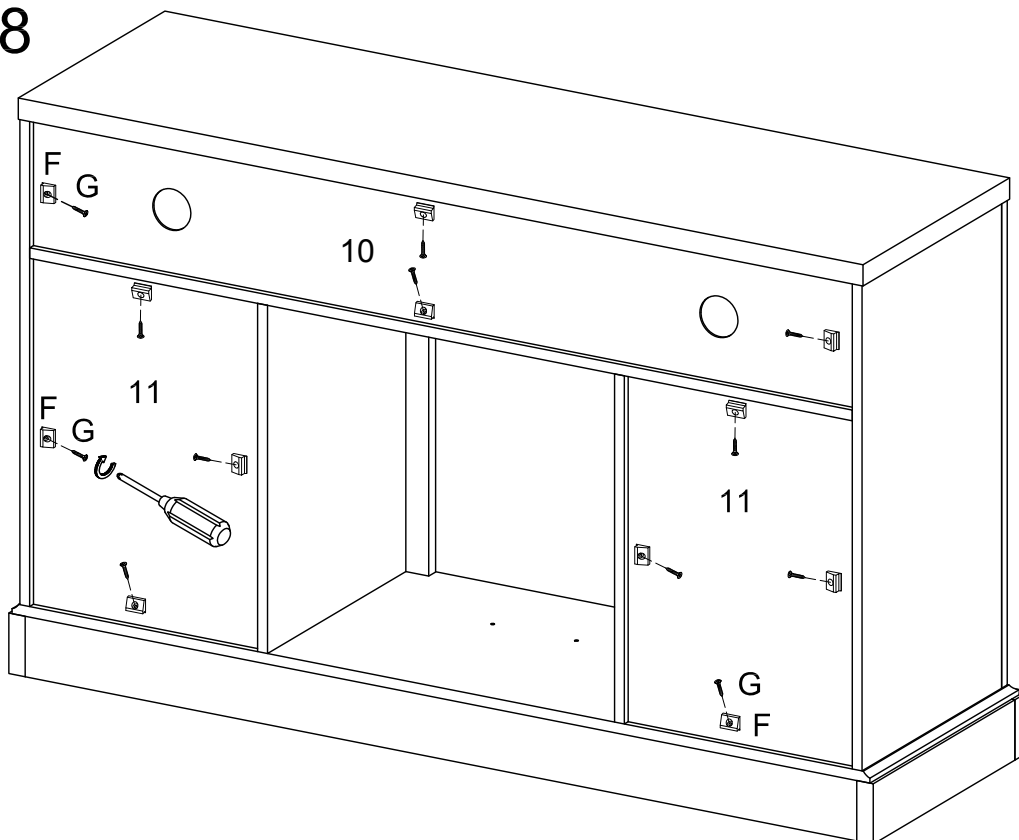
Secure parts (7) to top panel (1) with screw (K).

Step 17



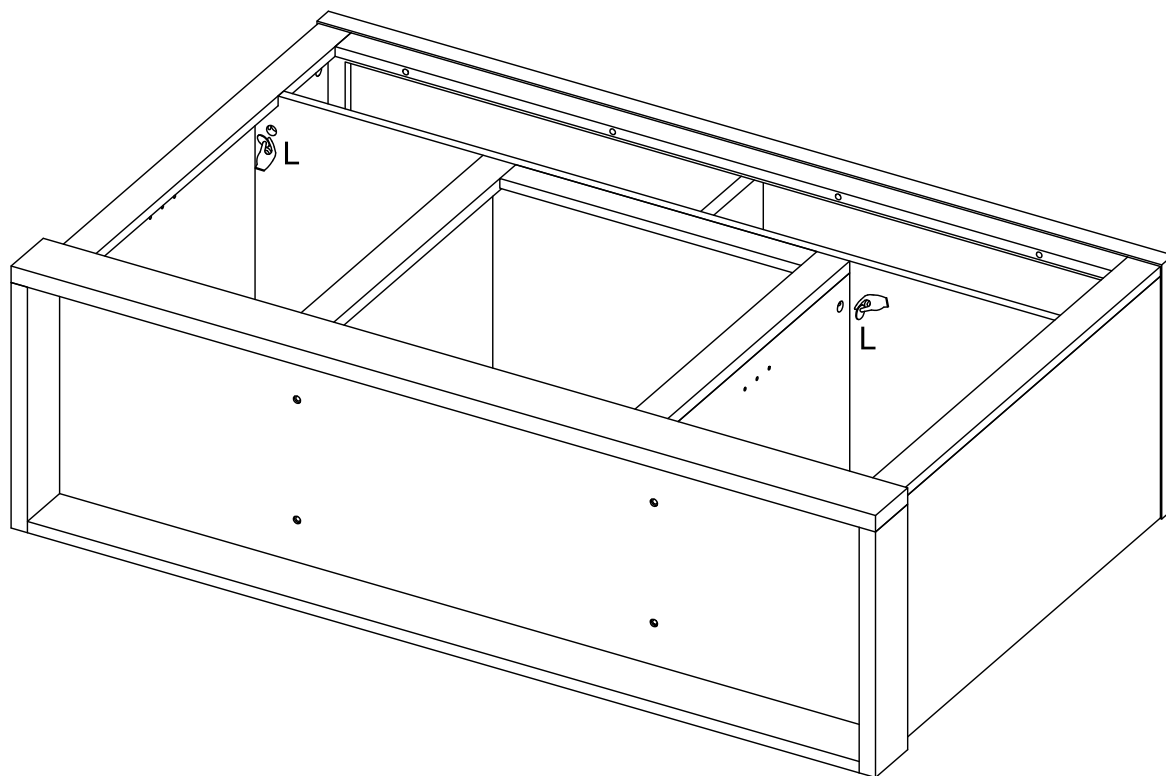
Insert top panel (1) as per diagram, then insert and secure cam lock (C) to parts (19) and side panel (3,4) to lock it.

Step 18



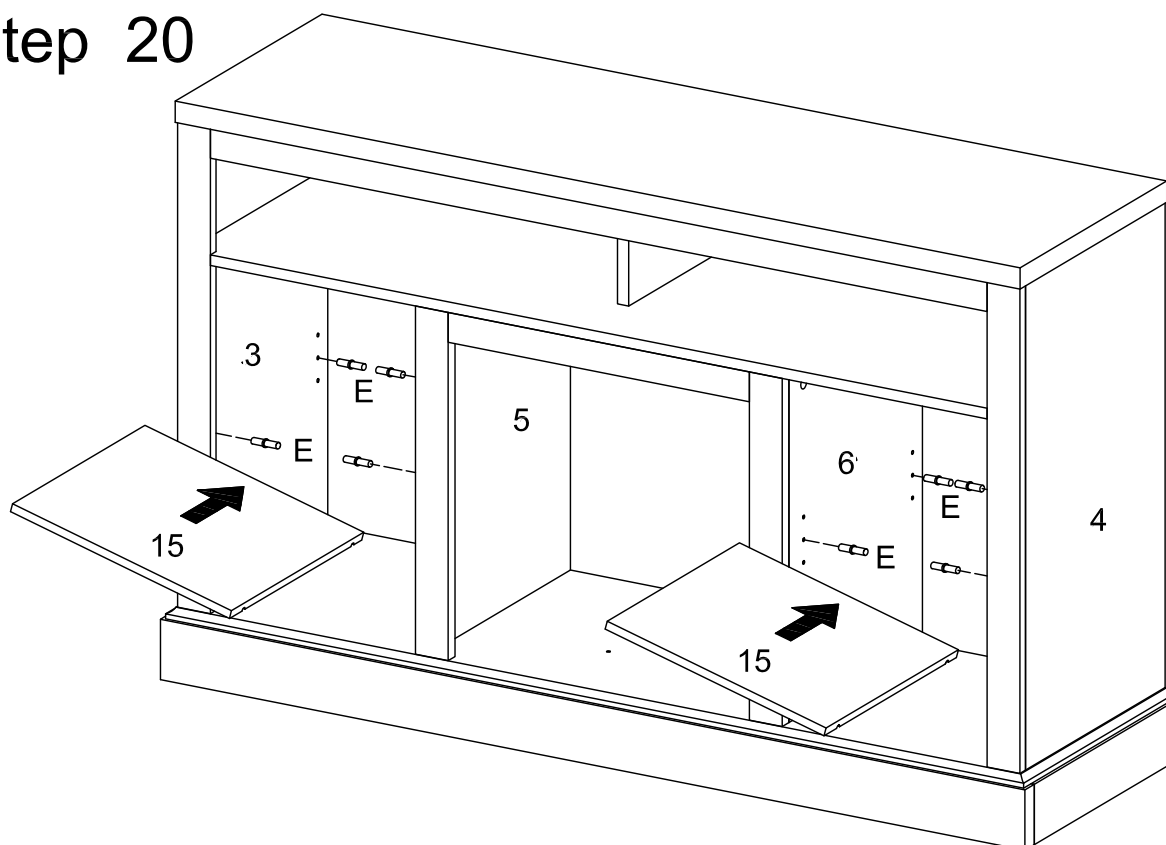
Secure plastic wedge (F) to back panel (10,11) with screw (G).

Step 19



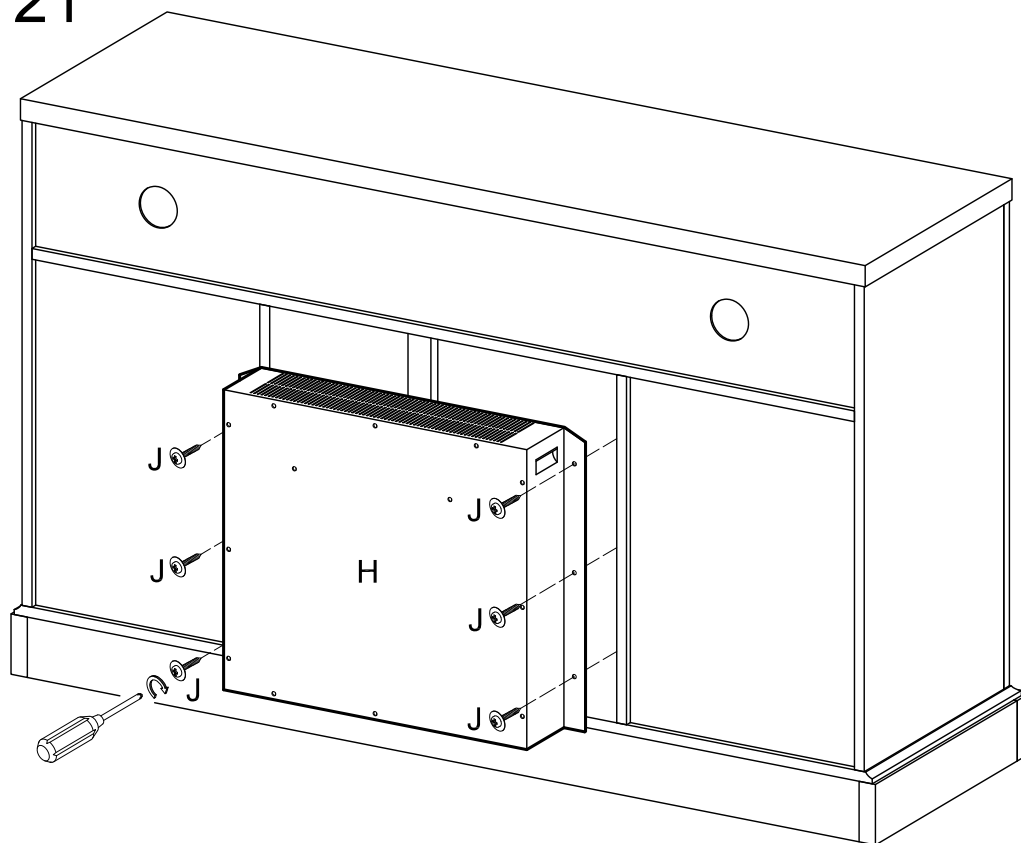
Place sticker (L) over holes as per diagram.

Step 20



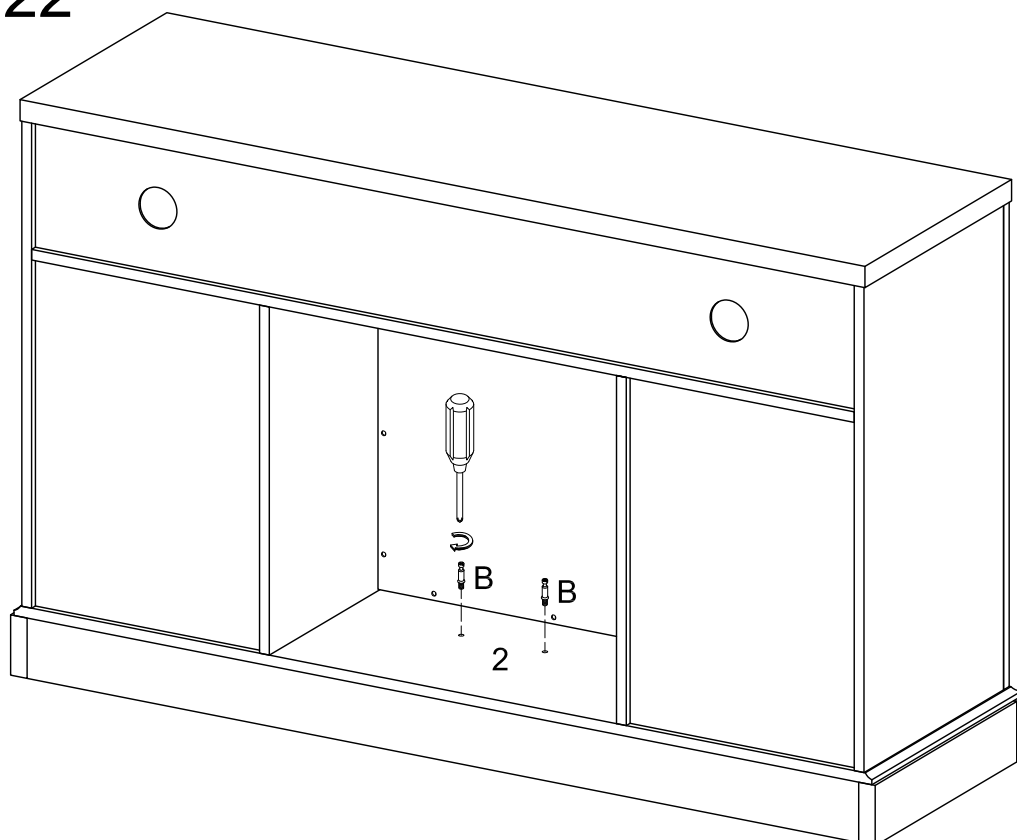
Insert shelf support pin (E) into side panel (3,4,5,6), then place shelf (15) on top of support pin (E).

Step 21



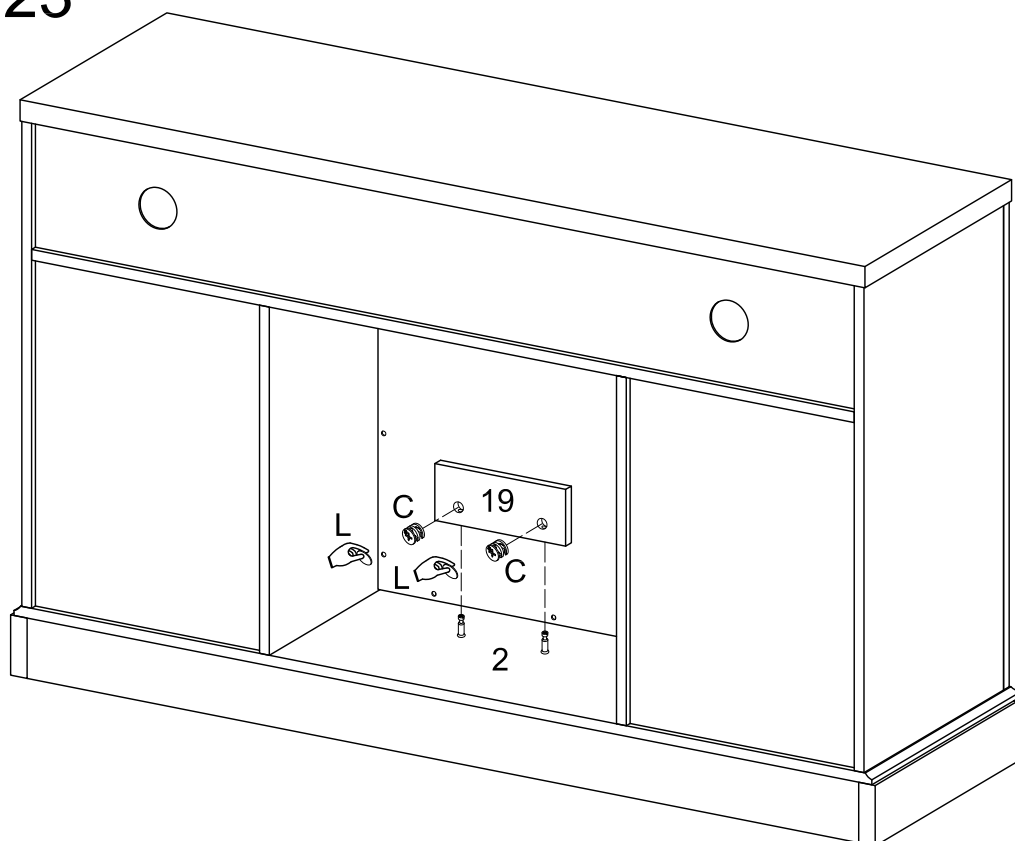
Put the fireplace insert (H) carefully into the stand and secure it by using screw (J).

Step 22



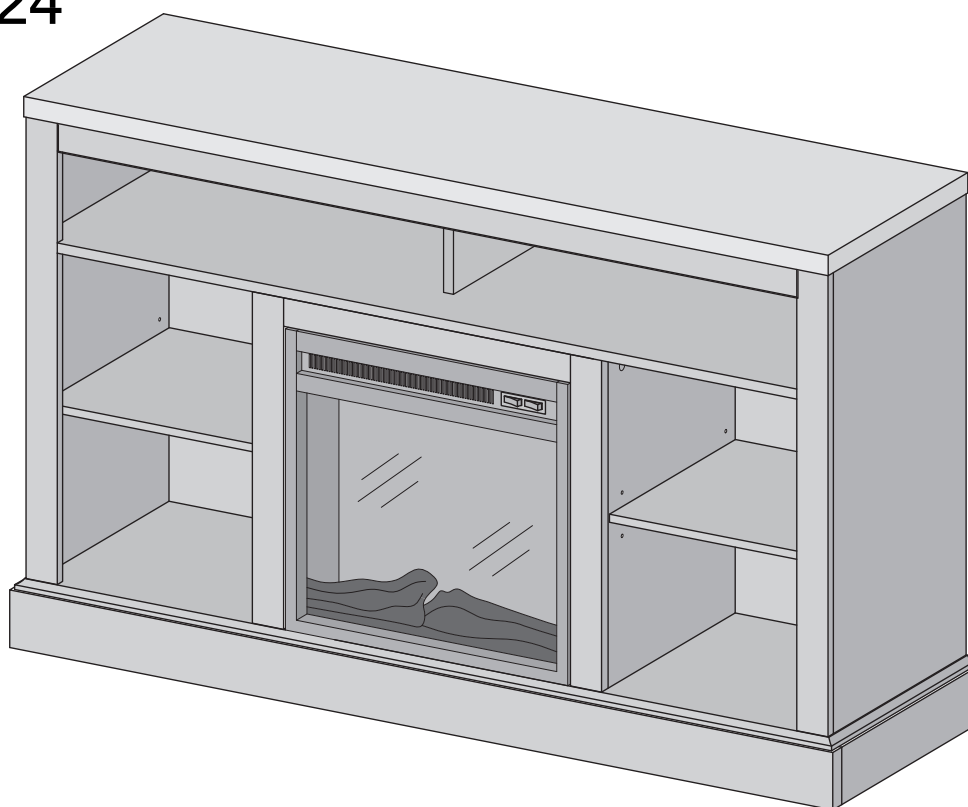
Secure cam bolt (B) to bottom panel (2).

Step 23



Attach parts (19) behind the fireplace unit by using cam bolts (B) and cam locks (C). Place sticker (L) over holes on parts (19) as per diagram.

Step 24



Final Assembly