

EDALT106 (shown with Ninja Sling)



### FEATURES

- Lightweight yet sturdy
- Stackable for convenient storage
- Bumpers on legs prevent scratching while stacked
- Low-maintenance and ideal for outdoor applications
- Mix and Match with Nette and Koral Collections
- Pair with Eiland dining and deep seating

### MATERIALS

Powder-coated aluminum is durable and lightweight. Its rustproof nature ensures furniture will remain beautiful over its lifetime. Composite sling is a mesh fabric woven using PVC coated polyester. Durable and elastic, this outdoor fabric provides a comfortable seat that resists weathering and will endure years of use.

Seat Height	Assemb. Width	Assemb. Depth	Assemb. Height	Assemb. Weight Lbs.
15"	28.5"	80.5"	43.25"	25
Carton # of Boxes	Carton Width	Carton Depth	Carton Height	Carton Weight Lbs.
1	35"	91"	41"	② 70 ④ 120

② ④ Indicates weight for packs of TWO or FOUR.

### CONSTRUCTION

Welded aluminum

### HARDWARE

Stainless Steel

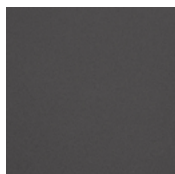
### SHIPPING

Ships via LTL  
Knocked down

### ASSEMBLY

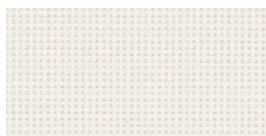
No assembly required

### FRAME



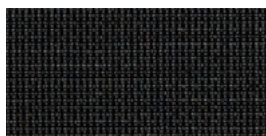
CARBON  
POWDER COATED  
ALUMINUM C

### COMPOSITE SLING OPTIONS



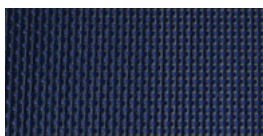
NATURAL

C



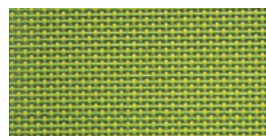
BLACK

B



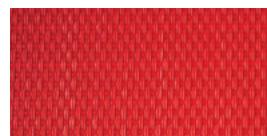
INK PEN

T101



GO GREEN

T102



RED

T105



TITANIUM

T109



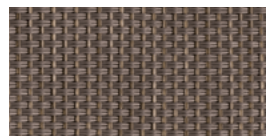
NINJA

T106



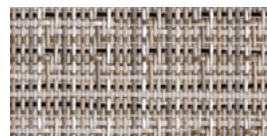
SLATE

T110



COCOA

T104



BELLOWS

T111

For Quick Ship or Extended Lead Time SKU status, please call 877-866-3331 or email sales@oxfordgarden.com.